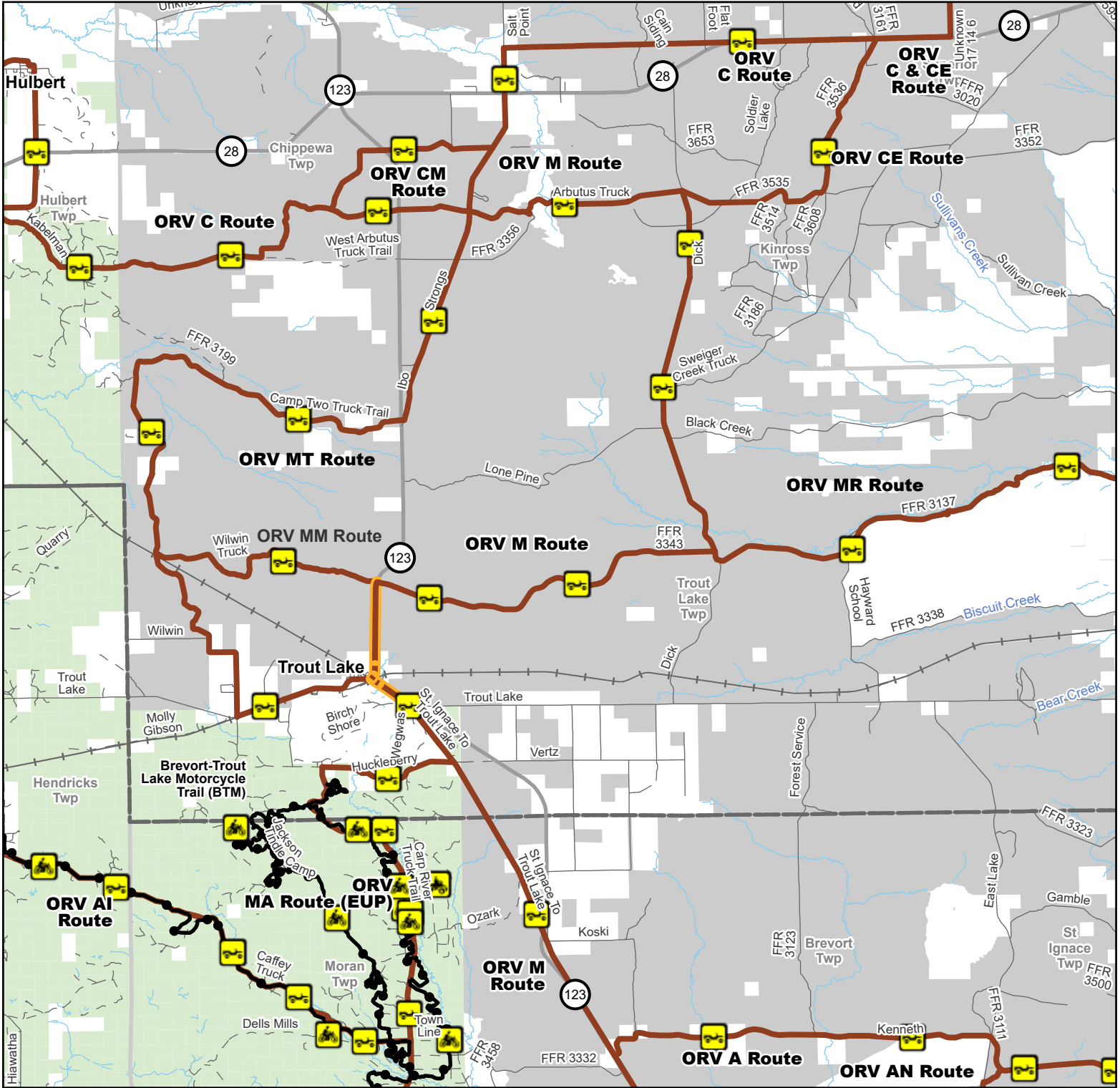




ORV M Route North And ORV MT, MM & MR Routes

Trout Lake, Moran & Brevort Townships, Mackinac & Chippewa Counties, Michigan

Advisory: Trails and Routes have two-way traffic. Disclaimer: Trails shown on this map are an approximate representation of the trail system at the time of publication and may not reflect current ground conditions. Stay on signed trails only!



- Motorcycle Trails
- ORV Routes
- ORV Trails
- DNR Motorcycle Trails 24 Inch Maximum Width

- ORV Route (72 Inch) ORVs of all sizes including off-road motorcycles. ORV license and trail permit required unless licensed by the Secretary of State.
- ORV Route (72 Inch) MDOT ROW - Seasonal Connector, Open May 1 to November 30
- Highway

- Paved Road
- Gravel or Dirt Road
- Railroad
- DNR-managed land
- Federally-managed land
- Civil Township
- County

Description: ORV M Route 28 miles. ORV MT Route 19.7 miles. ORV MM Route 4.7 miles. ORV MR Route 16.4 miles.

Updated: 06/01/2026

If you need assistance with this map, please email DNR-Trails@michigan.gov.

