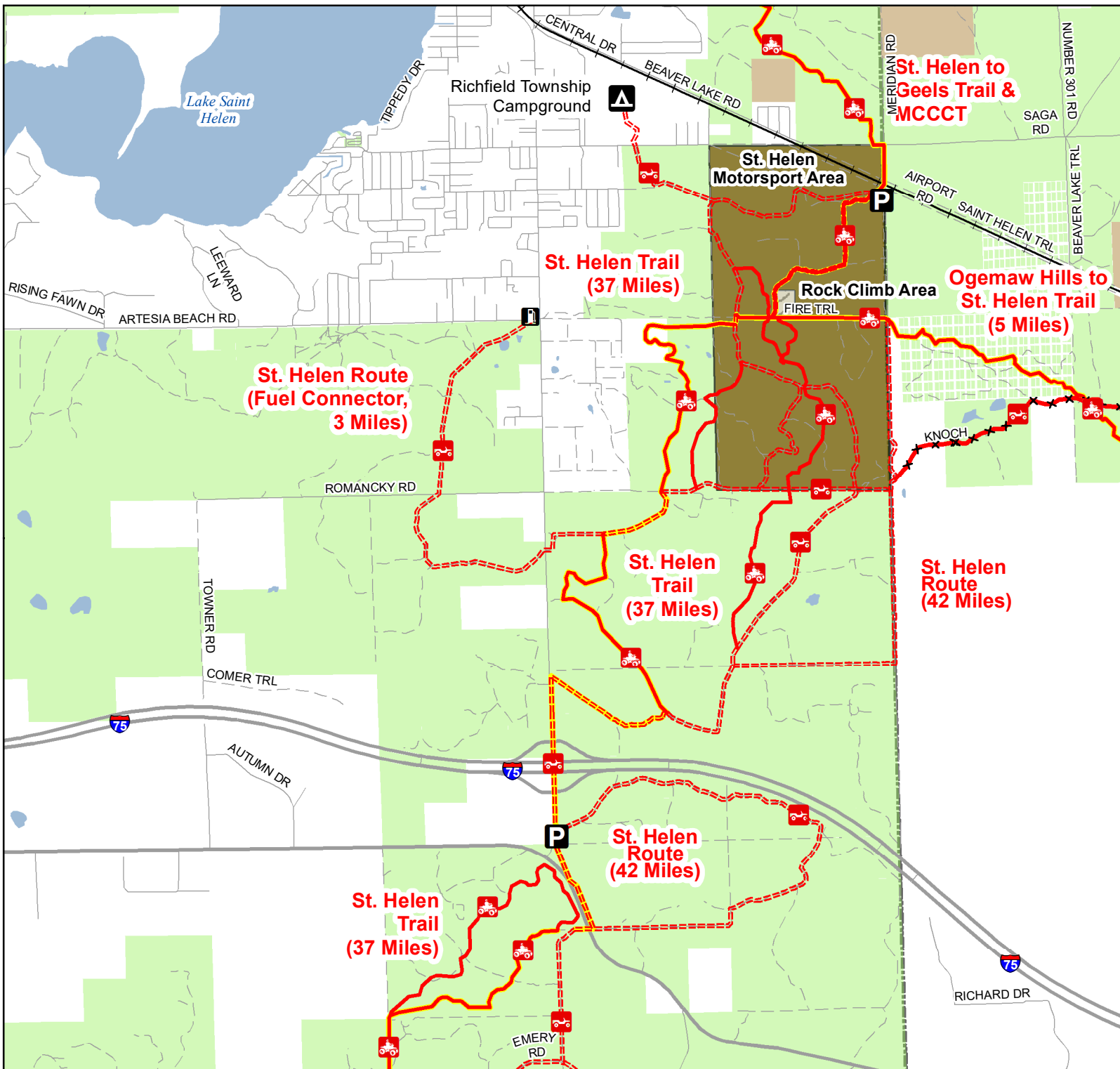




# St Helen Trail & Route North

Roscommon County, Michigan

ADVISORY: Trails and Routes have two-way traffic.  
DISCLAIMER: Trails shown on this map are an approximate representation of the trail system at the time of publication and may not reflect current ground conditions.  
STAY ON SIGNED TRAILS ONLY!



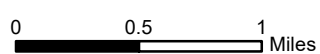
- P** Parking Lot
- G** Gas Station
- ORV Route
- ORV Trail
- ORV Route Closed

ORV Route – ORVs of all sizes including off-road motorcycles. ORV license and trail permit required unless licensed by the Secretary of State.

ORV Trail – ORVs 50 inches in width or less including off-road motorcycles. ORV license and trail permit required.

- Michigan Cross Country Cycle Trail (MCCCT)
- Highway
- Paved Road
- Gravel or Dirt Road
- Railroad
- Lake and River
- Rock Climb Area
- Scramble Area
- State Forest Land

- Federal Land
- County



Michigan.gov/ORVInfo  
DNR Open Data Portal  
gis-midnr.opendata.arcgis.com