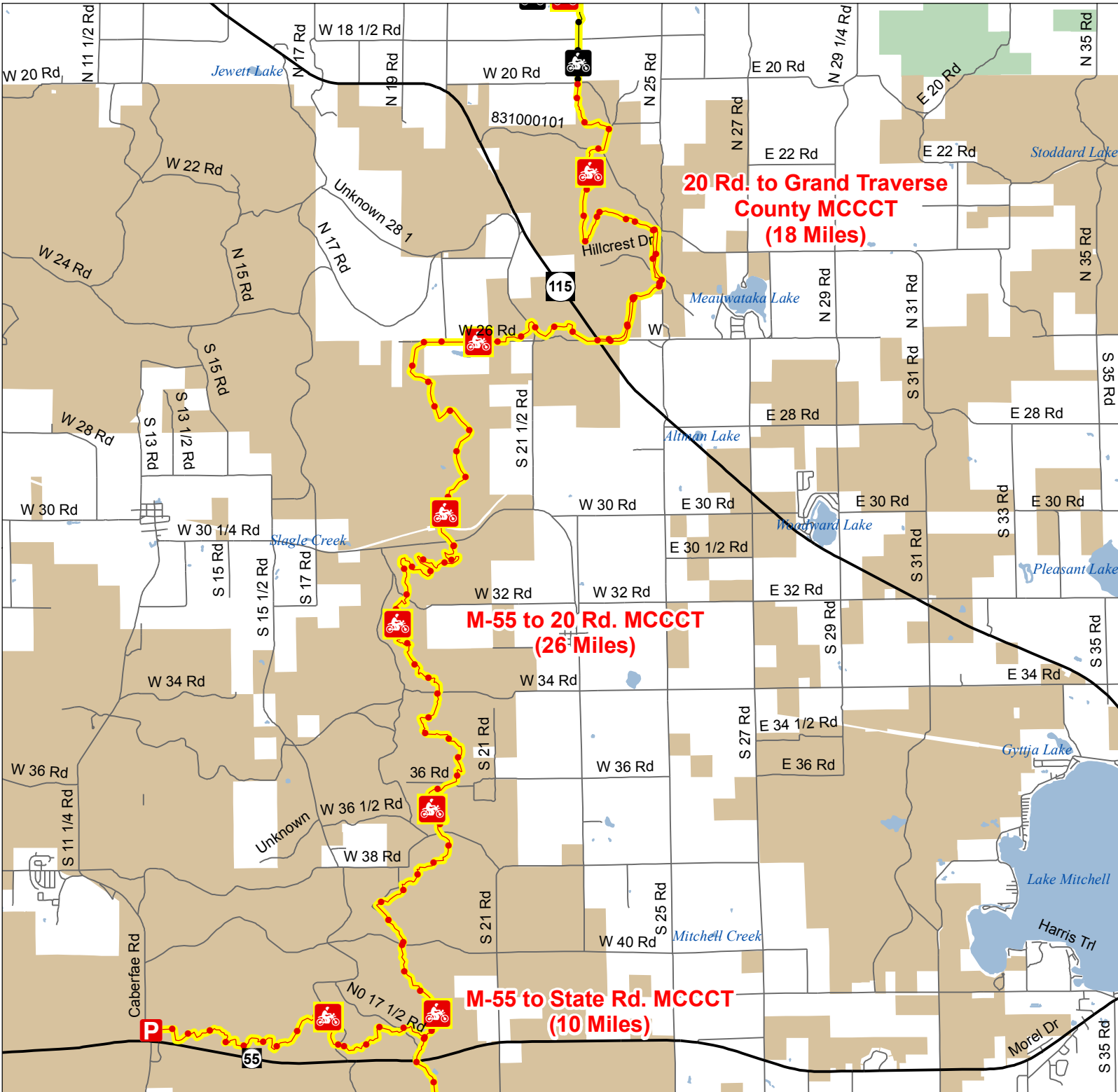


M-55 to 20 Rd. MCCCT

Wexford County, Michigan



- Motorcycle Trail – Motorcycles Only. ORV license and trail permit required.
- Motorcycle Trail – Motorcycles only. (Secretary of State license required)
- Michigan Cross Country Cycle Trail (MCCCT)

- Trailhead Parking
- Highway
- Paved or Gravel Road
- Poor Dirt Road
- Lakes and Rivers
- State Forest
- Federal Land
- County Boundaries

Advisory: Routes have two-way traffic.
Disclaimer: Trails shown on this map are an approximate representation of the trail system at the time of publication and may not reflect current ground conditions. **STAY ON SIGNED TRAILS ONLY!**

