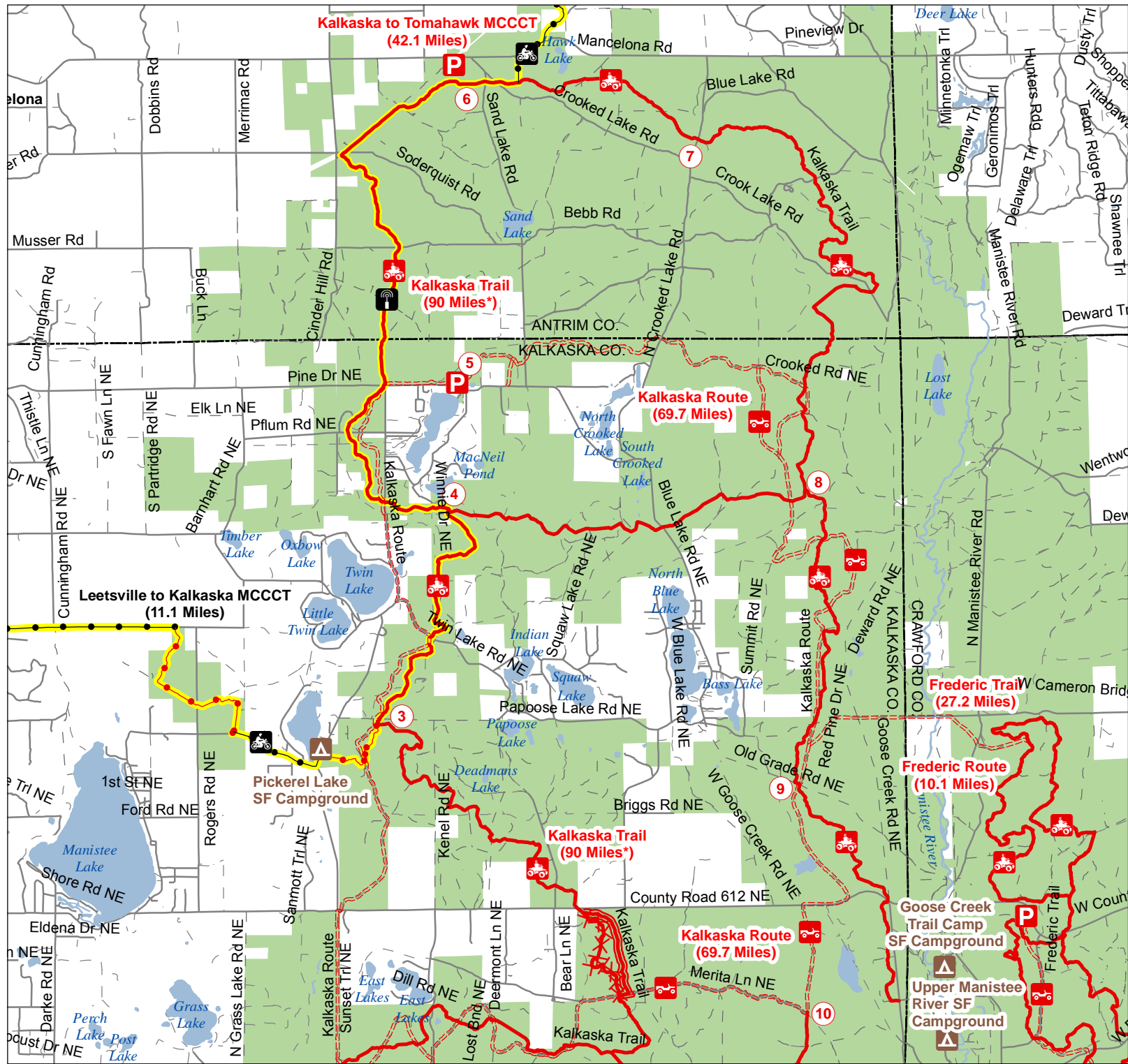


# Kalkaska Trail & Route North

## Antrim & Kalkaska Counties Michigan



- ORV Route – ORVs of all sizes including off-road motorcycles. ORV license and trail permit required unless licensed by the Secretary of State.
- ORV Trail – ORVs 50 inches in width or less including off-road motorcycles. ORV license and trail permit required.
- Motorcycle Trail – Motorcycles only. ORV license and trail permit required.
- Motorcycle Trail – Motorcycles only. Secretary of State license required.
- Michigan Cross Country Cycle Trail (MCCCT)

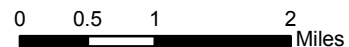
- State Forest Campground
- Trailhead Parking
- Intersection Numbers
- Highway
- Paved or Gravel Road
- Poor Dirt Road
- Lakes and Rivers
- State Land
- County Boundaries



\* Mileage shown is actual ground miles.

Advisory: Trails and Routes have two-way traffic.

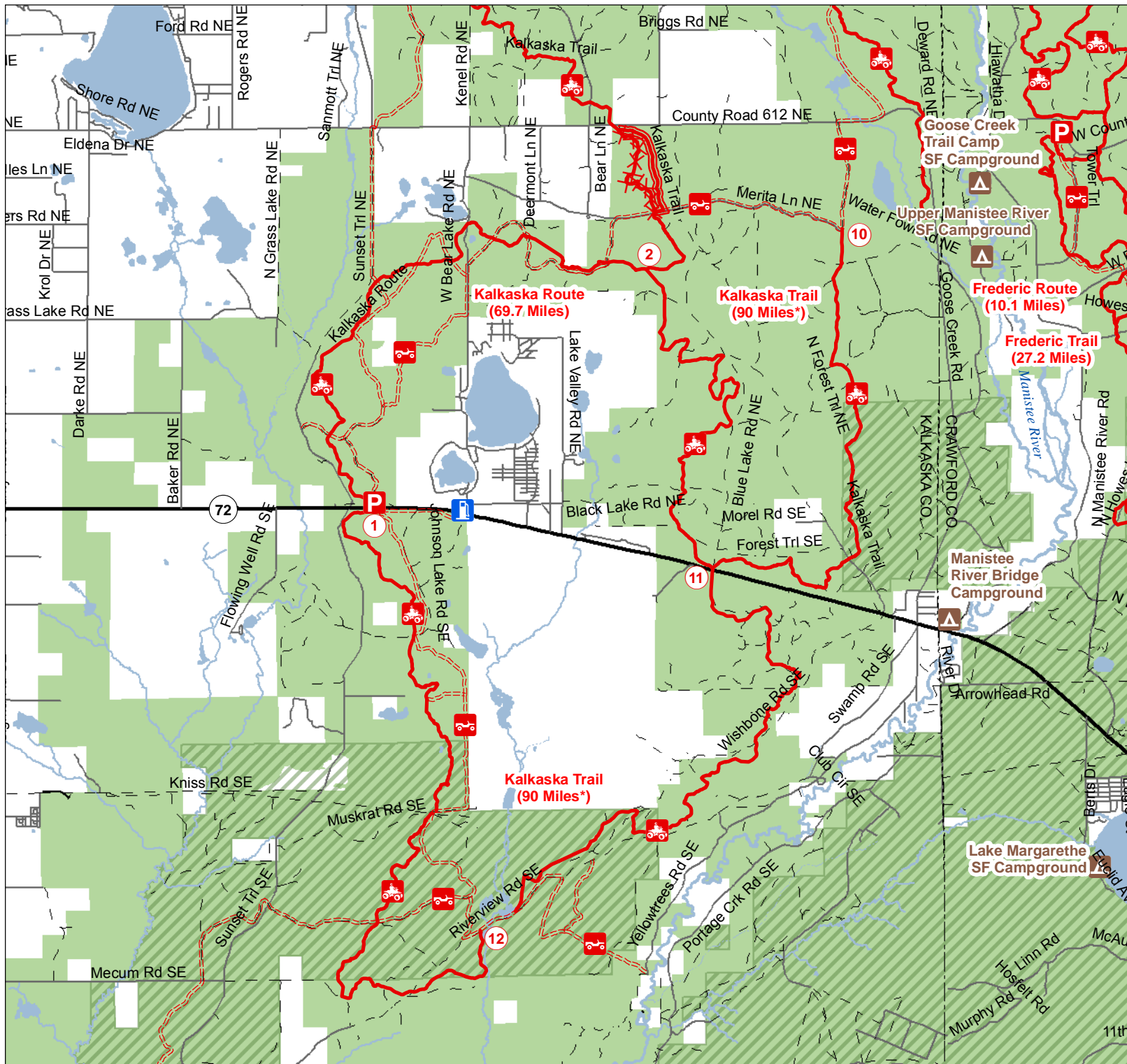
Disclaimer: Trails shown on this map are an approximate representation of the trail system at the time of publication and may not reflect current ground conditions. **STAY ON SIGNED TRAILS ONLY!**



Updated 2/24/2014

# Kalkaska Trail & Route Central

Kalkaska County, Michigan



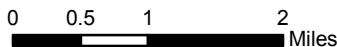
- ORV Route – ORVs of all sizes including off-road motorcycles. ORV license and trail permit required unless licensed by the Secretary of State.
- ORV Trail – ORVs 50 inches in width or less including off-road motorcycles. ORV license and trail permit required.

\* Mileage shown is actual ground miles.

Advisory: Trails and Routes have two-way traffic.

Disclaimer: Trails shown on this map are an approximate representation of the trail system at the time of publication and may not reflect current ground conditions. **STAY ON SIGNED TRAILS ONLY!**

- State Forest Campground
- Trailhead Parking
- Gas Station
- Intersection Number
- Highway
- Paved or Gravel Road
- Poor Dirt Road
- Lakes and Rivers
- State Land
- Camp Graying Land
- County Boundaries

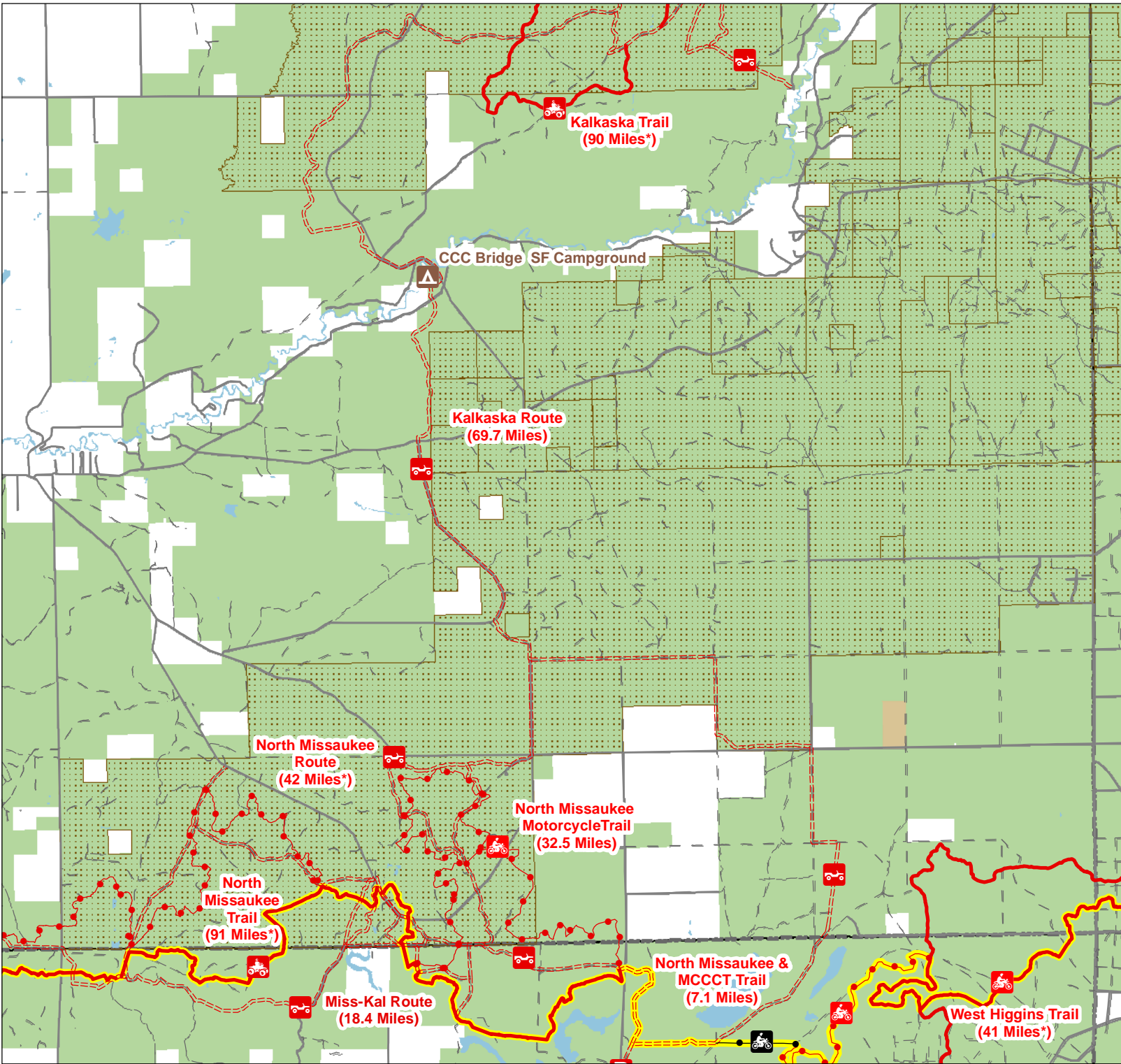


Updated 2/24/2014



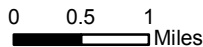
# Kalkaska Trail & Route South

Kalkaska County Michigan



- ORV Route – ORVs of all sizes including off-road motorcycles. ORV license and trail permit required unless licensed by the Secretary of State.
- ORV Trail – ORVs 50 inches in width or less including off-road motorcycles. ORV license and trail permit required.
- Motorcycle Trail – Motorcycles Only. ORV license and trail permit required.
- Motorcycle Trail – Motorcycles only. Secretary of State license required.
- Michigan Cross Country Cycle Trail (MCCCT)

- State Forest Campground
- Highway
- Paved or Gravel Road
- Poor Dirt Road
- Lakes and Rivers
- State Land
- County Boundaries



\* Mileage shown is actual ground miles.

Advisory: Trails and Routes have two-way traffic.

Disclaimer: Trails shown on this map are an approximate representation of the trail system at the time of publication and may not reflect current ground conditions. **STAY ON SIGNED TRAILS ONLY!**