

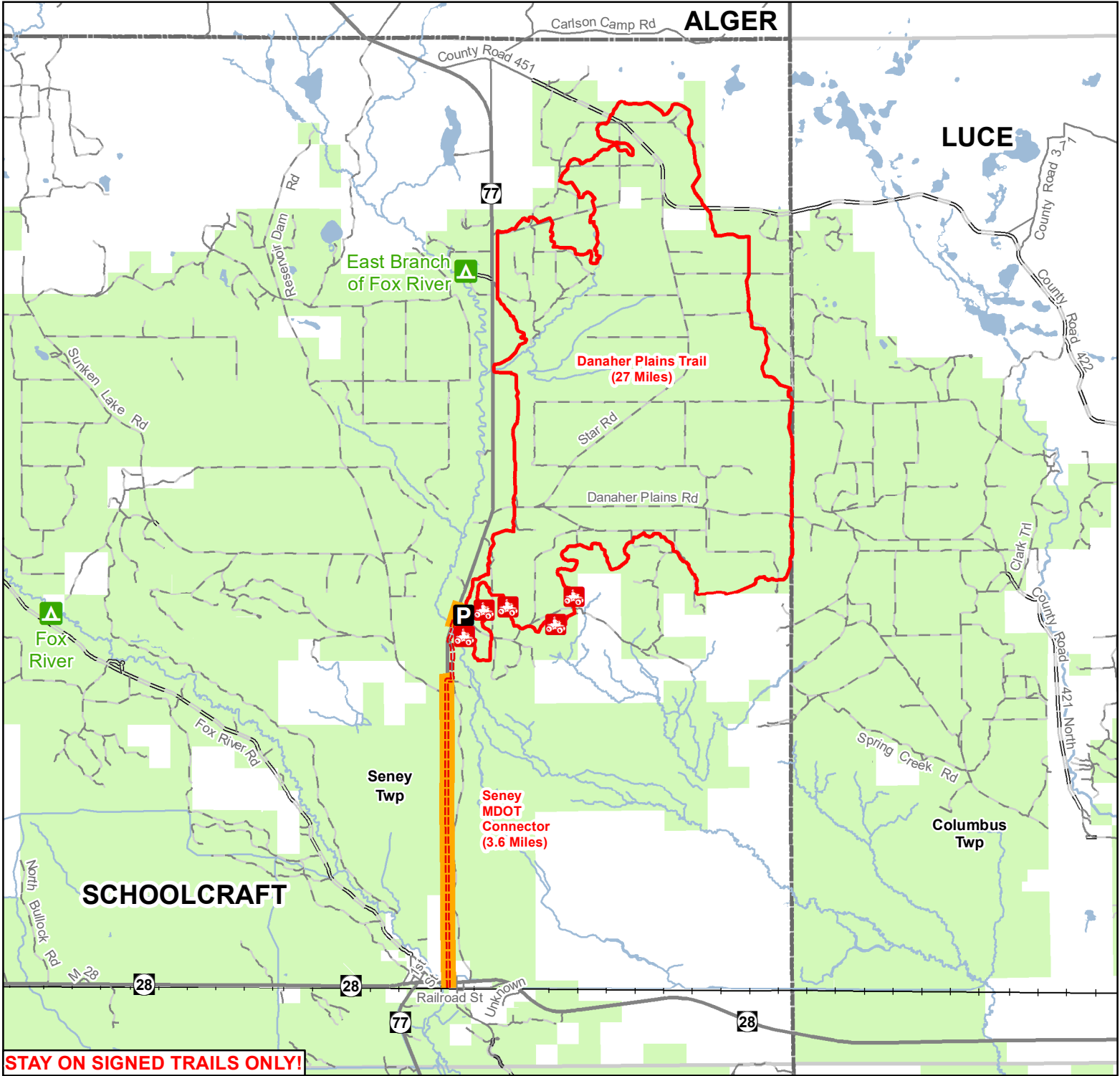


Danaher Plains Trail

Schoolcraft County, Michigan

ADVISORY: Trails and Routes have two-way traffic.

DISCLAIMER: Trails shown on this map are an approximate representation of the trail system at the time of publication and may not reflect current ground conditions.



STAY ON SIGNED TRAILS ONLY!

- State Forest Campground
- Parking Lot
- ORV Trail
- ORV Route – ORVs of all sizes including off-road motorcycles. ORV license and trail permit required unless licensed by the Secretary of State.
- MDOT ROW - Seasonal Connector, Open May 1 - November 30
- ORV Trail – ORVs 50 inches in width or less including off-road motorcycles. ORV license and trail permit required.
- Highway
- Paved
- Gravel
- Poor dirt
- Railroad
- Lakes and Rivers
- State Forest Land
- Township
- County Boundary

