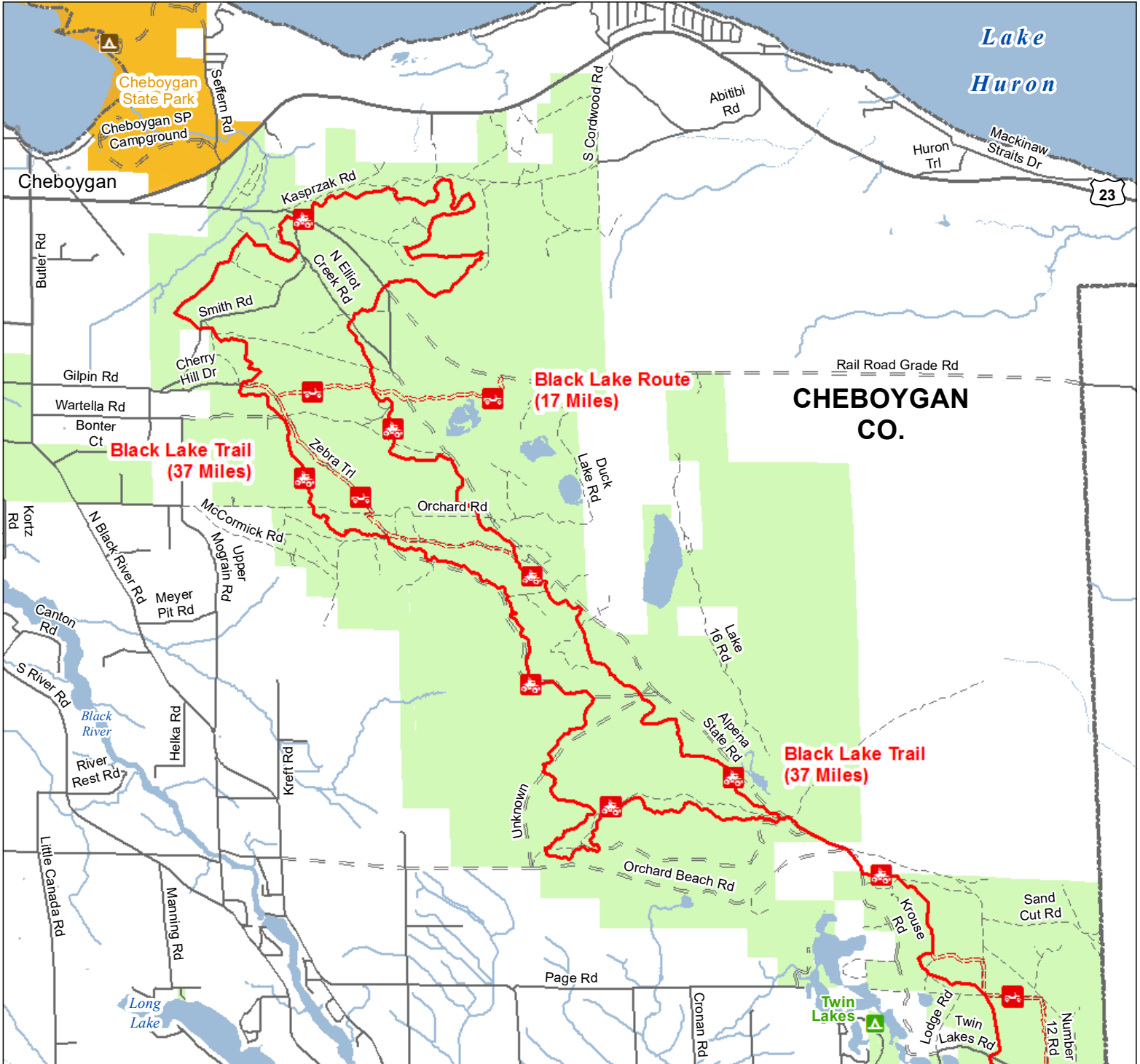




Black Lake Trail & Route North

Cheboygan County, Michigan

ADVISORY: Trails and Routes have two-way traffic.
DISCLAIMER: Trails shown on this map are an approximate representation of the trail system at the time of publication and may not reflect current ground conditions.
STAY ON SIGNED TRAILS ONLY!



- | | | | |
|--|---|--|---------------------|
| | State Forest Campground | | Paved Road |
| | State Park Campground | | Gravel Road |
| | ORV Routes | | Poor Dirt Road |
| | ORV Trails | | Intermittent Stream |
| | ORV Route – ORVs of all sizes including off-road motorcycles. ORV license and trail permit required unless license by the Secretary of State. | | Perennial River |
| | ORV Trail – ORVs 50 inches in width or less including off-road motorcycles. ORV license and trail permit required. | | Lakes and Rivers |
| | Highway | | State Park Boundary |
| | | | State Forest Land |
| | | | City or Village |
| | | | County Boundary |

