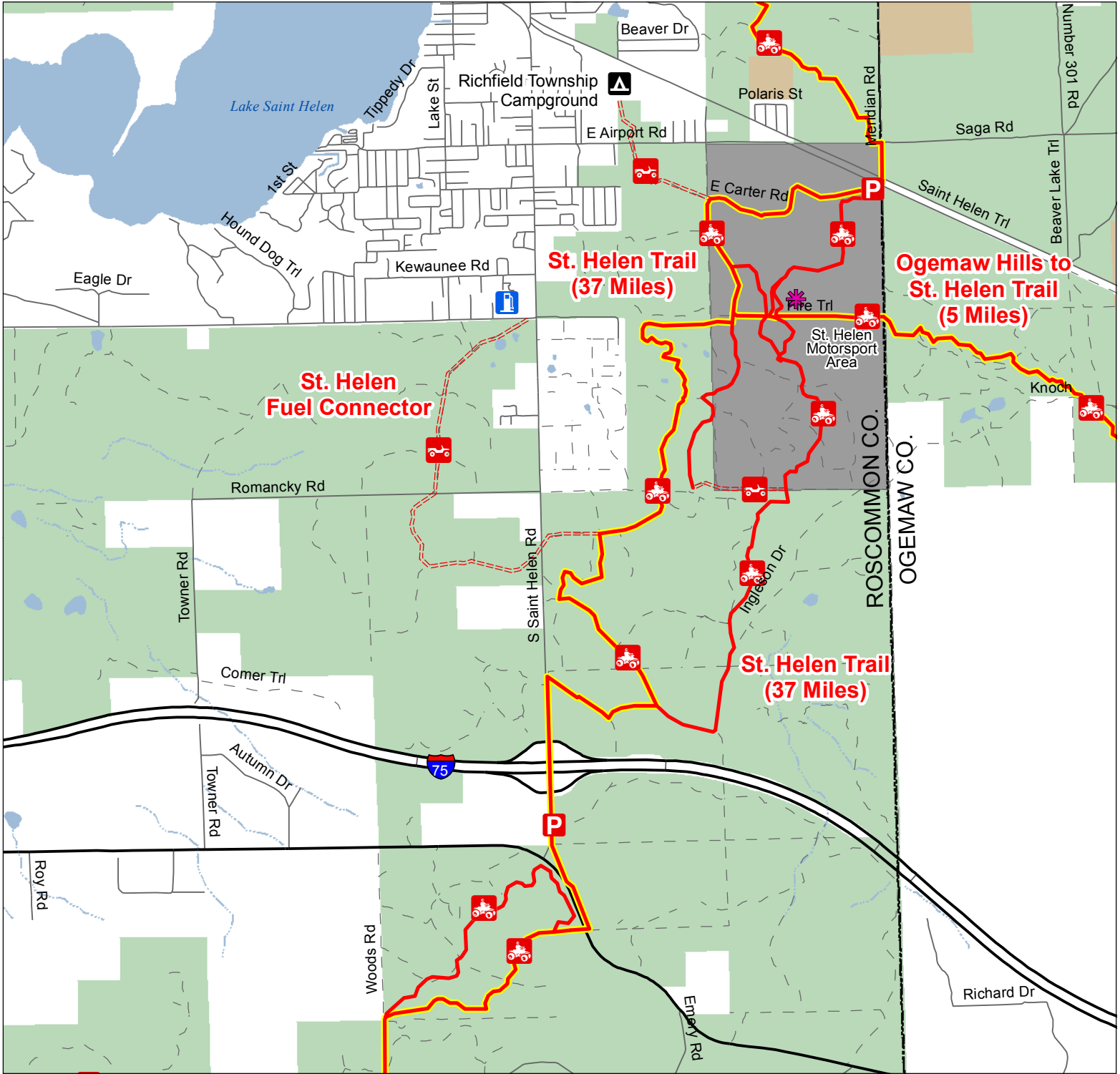


# St. Helen Trail & Route North

Roscommon County, Michigan

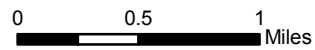


- ORV Route – ORVs of all sizes including off-road motorcycles. ORV license and trail permit required unless licensed by the Secretary of State.
- ORV Trail – ORVs 50 inches in width or less including off-road motorcycles. ORV license and trail permit required.
- Michigan Cross Country Cycle Trail (MCCCT)

- Rock Course
- Trailhead Parking
- Gas Stations
- Highway
- Gravel; Paved
- Poor Dirt
- Lakes and Rivers
- St. Helen Motorsport Area (ORV's of all sizes)
- State Forest
- Federal Lands
- County Boundary



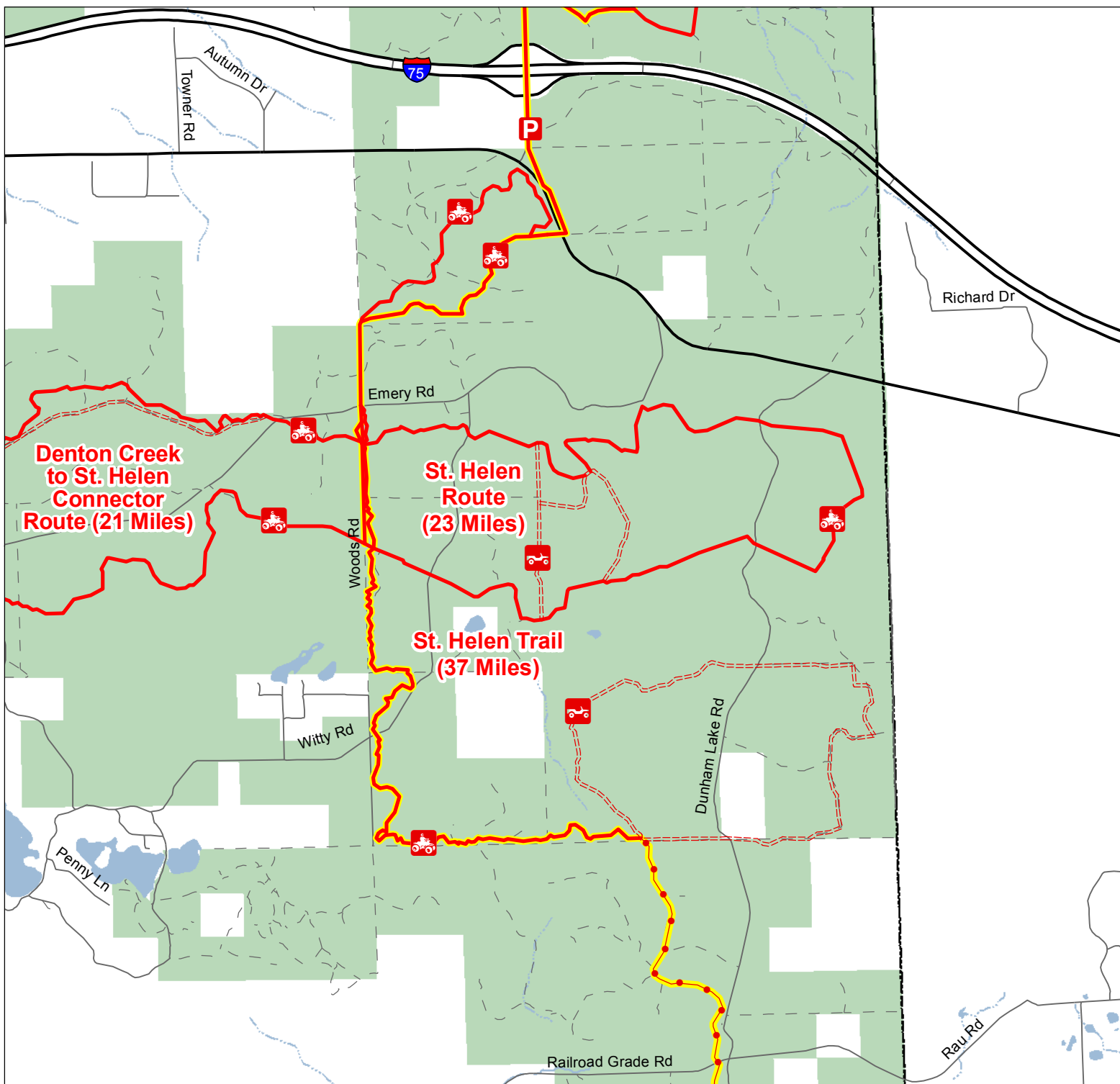
**Advisory:** Trails and Routes have two-way traffic.  
**Disclaimer:** Trails shown on this map are an approximate representation of the trail system at the time of publication and may not reflect current ground conditions.  
**STAY ON SIGNED TRAILS ONLY!**



Updated 5/07/2014

# St. Helen Trail & Route South

Roscommon County, Michigan

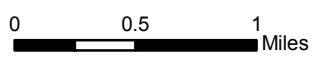


- ORV Route – ORVs of all sizes including off-road motorcycles. ORV license and trail permit required unless licensed by the Secretary of State.
- ORV Trail – ORVs 50 inches in width or less including off-road motorcycles. ORV license and trail permit required.
- Motorcycle Trail – Motorcycles only. (Secretary of State license required)
- Michigan Cross Country Cycle Trail (MCCCT)

- Trailhead Parking
- Highway
- Gravel; Paved
- Poor Dirt
- Lakes and Rivers
- State Forest
- County Boundary



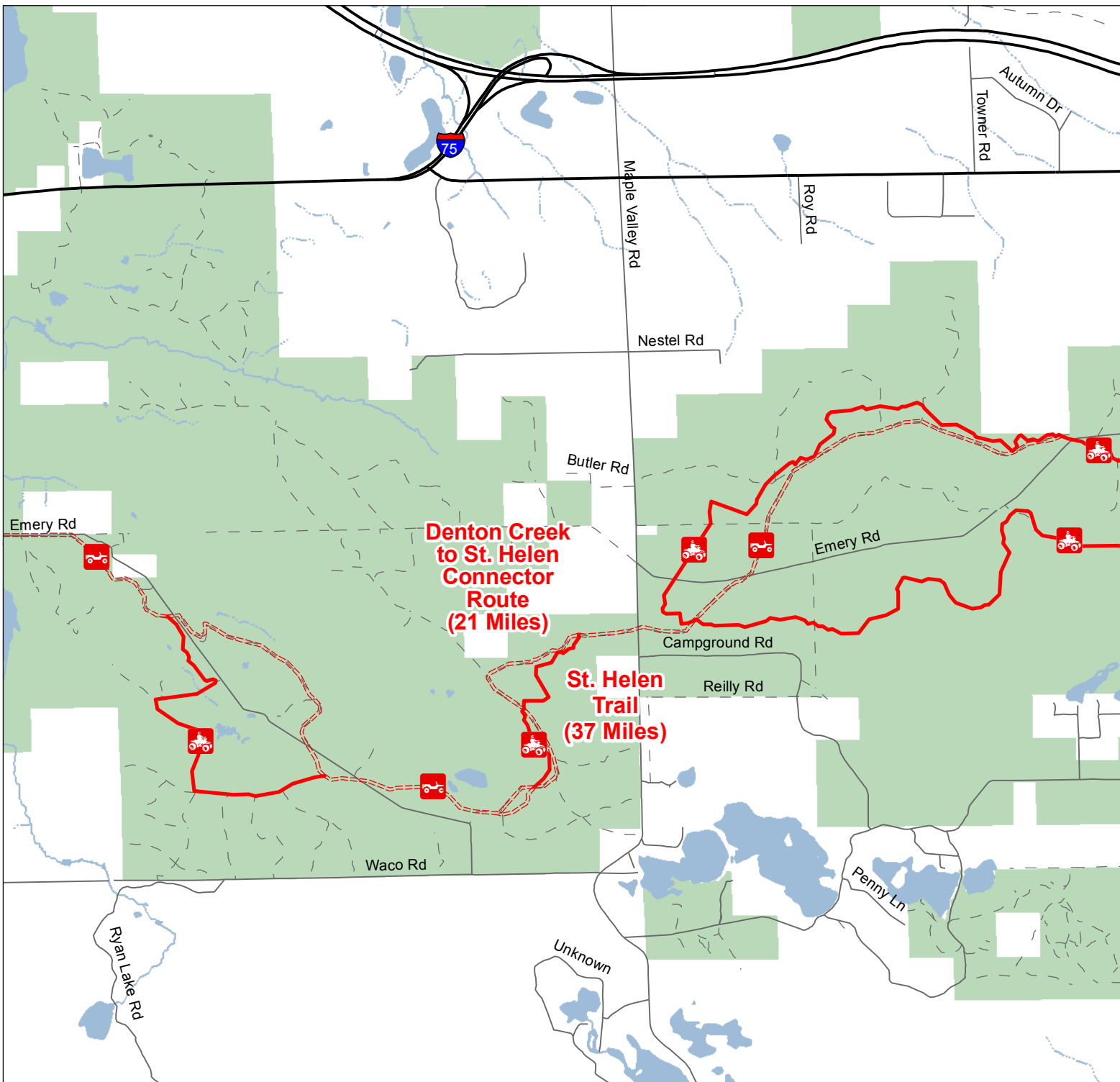
Advisory: Trails and Routes have two-way traffic.  
 Disclaimer: Trails shown on this map are an approximate representation of the trail system at the time of publication and may not reflect current ground conditions.  
**STAY ON SIGNED TRAILS ONLY!**



Updated 5/07/2014

# St. Helen Trail & Route West

Roscommon County, Michigan

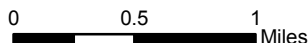


- ORV Route – ORVs of all sizes including off-road motorcycles. ORV license and trail permit required unless licensed by the Secretary of State.
- ORV Trail – ORVs 50 inches in width or less including off-road motorcycles. ORV license and trail permit required.

- Highway
- Gravel; Paved
- Poor Dirt
- Lakes and Rivers
- State Forest
- County Boundary



**Advisory:** Trails and Routes have two-way traffic.  
**Disclaimer:** Trails shown on this map are an approximate representation of the trail system at the time of publication and may not reflect current ground conditions.  
**STAY ON SIGNED TRAILS ONLY!**



Updated 5/07/2014