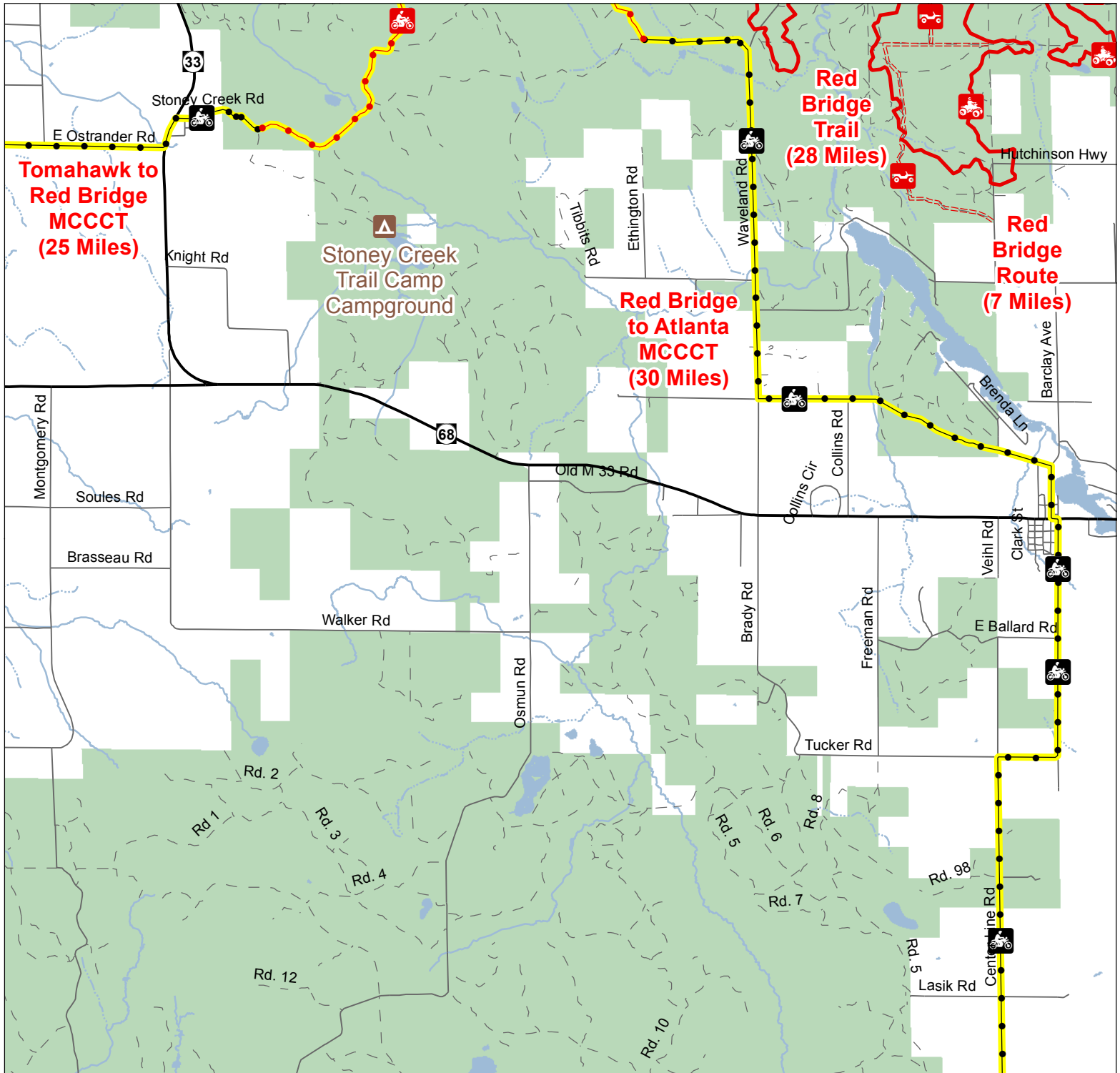


# Red Bridge to Atlanta MCCCT North

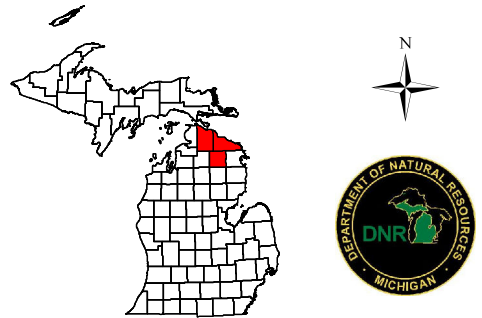
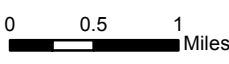
Cheboygan County, Michigan



- ORV Route - ORVs of all sizes including off-road motorcycles. ORV license and trail permit required unless licensed by the Secretary of State.
- ORV Trail - ORV's 50 inches in width or less including off-road motorcycles. ORV license and trail permit required.
- Motorcycle Trail - Motorcycles only. Secretary of State license required.
- Motorcycle Trail - Motorcycles only. DNR license and trail permit required.
- Michigan Cross Country Cycle Trail (MCCCT)

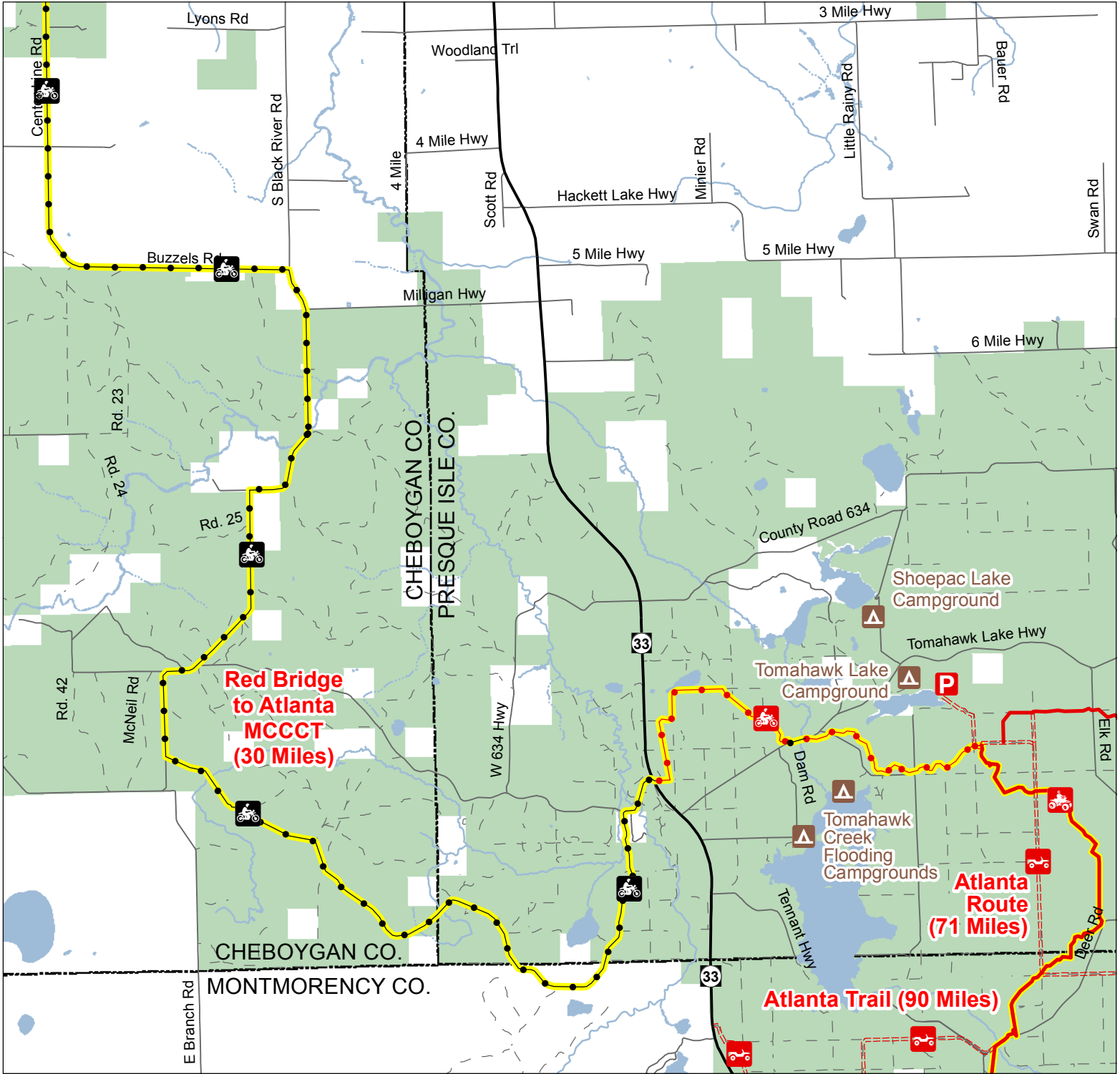
- ▲ Open
- P Parking Lots
- Highway
- Gravel; Paved
- - - Poor Dirt
- Lakes and Rivers
- State Land
- County Boundary

Advisory: Trails and Routes have two-way traffic.  
Disclaimer: Trails shown on this map are an approximate representation of the trail system at the time of publication and may not reflect current ground conditions. STAY ON SIGNED TRAILS ONLY!



# Red Bridge to Atlanta MCCCT South

## Cheboygan, Presque Isle & Montmorency Counties, Michigan



- - - - - ORV Route - ORVs of all sizes including off-road motorcycles. ORV license and trail permit required unless licensed by the Secretary of State.
- ORV Trail - ORV's 50 inches in width or less including off-road motorcycles. ORV license and trail permit required.
- Motorcycle Trail - Motorcycles only. Secretary of State license required.
- Motorcycle Trail - Motorcycles only. DNR license and trail permit required.
- Michigan Cross Country Cycle Trail (MCCCT)

- ▲ Open
- P Parking Lots
- Highway
- Gravel; Paved
- - - Poor Dirt
- Lakes and Rivers
- State Land
- County Boundary

**Advisory:** Trails and Routes have two-way traffic.  
**Disclaimer:** Trails shown on this map are an approximate representation of the trail system at the time of publication and may not reflect current ground conditions. **STAY ON SIGNED TRAILS ONLY!**

