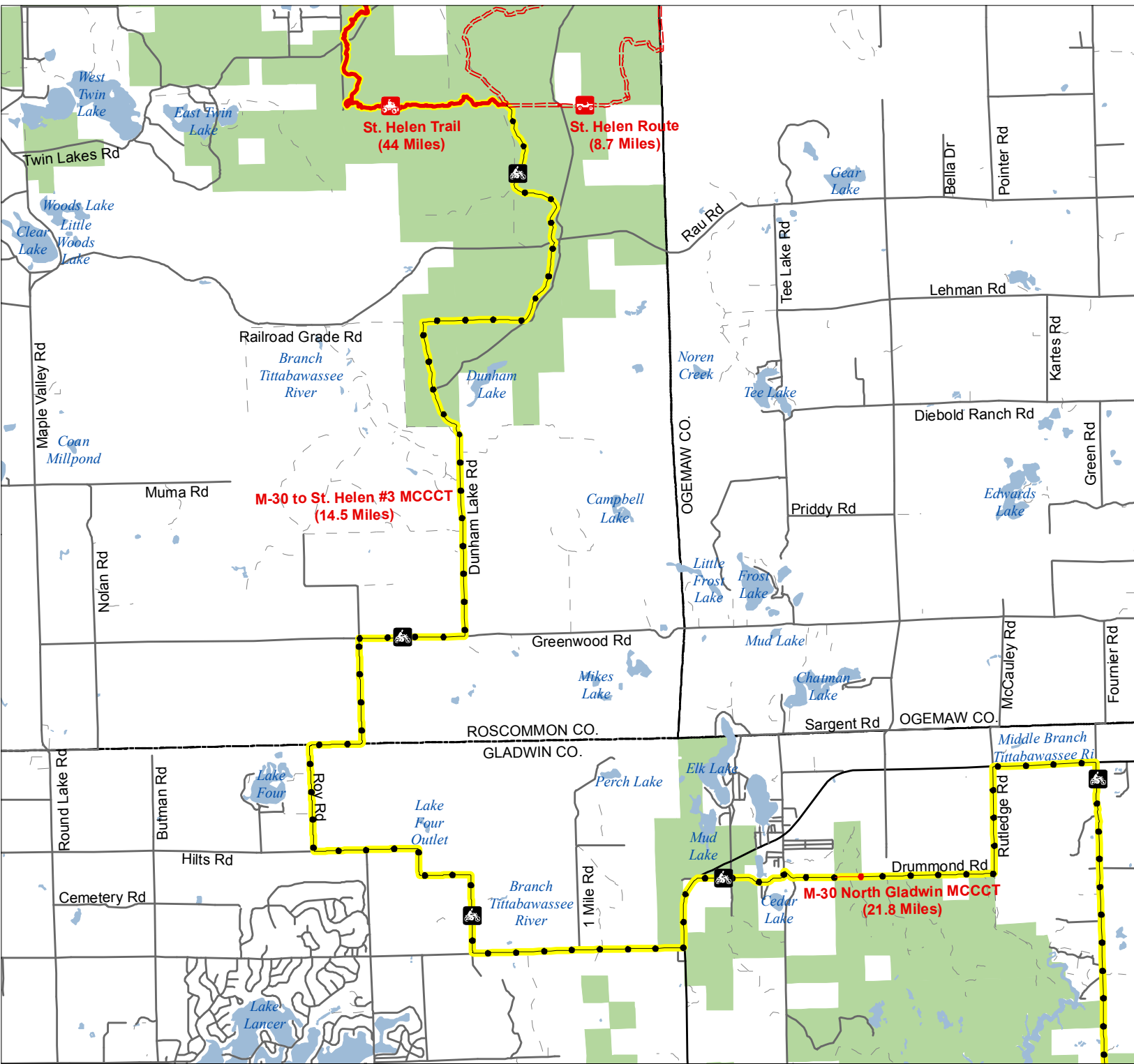






M-30 to St. Helen #3 MCCCT




Roscommon & Gladwin Counties, Michigan



-  Motorcycle Trail – Motorcycles only. (Secretary of State license required)
-  ATV Trail – ORV's less than 50" in width including off-road motorcycles. (DNR license (ORV sticker) required)
-  ORV Route – ORV's of all sizes including off-road motorcycles. (DNR license (ORV sticker) required unless licensed by the Secretary of State)
-  Michigan Cross Country Cycle Trail (MCCCT)

Advisory: Trails and Routes have two-way traffic.

Disclaimer: Trails shown on this map are an approximate representation of the trail system at the time of publication and may not reflect current ground conditions. **STAY ON SIGNED TRAILS ONLY!**

-  Highway
-  Paved or Gravel Road
-  Poor Dirt Road
-  Lakes and Rivers
-  State Land
-  County Boundaries

