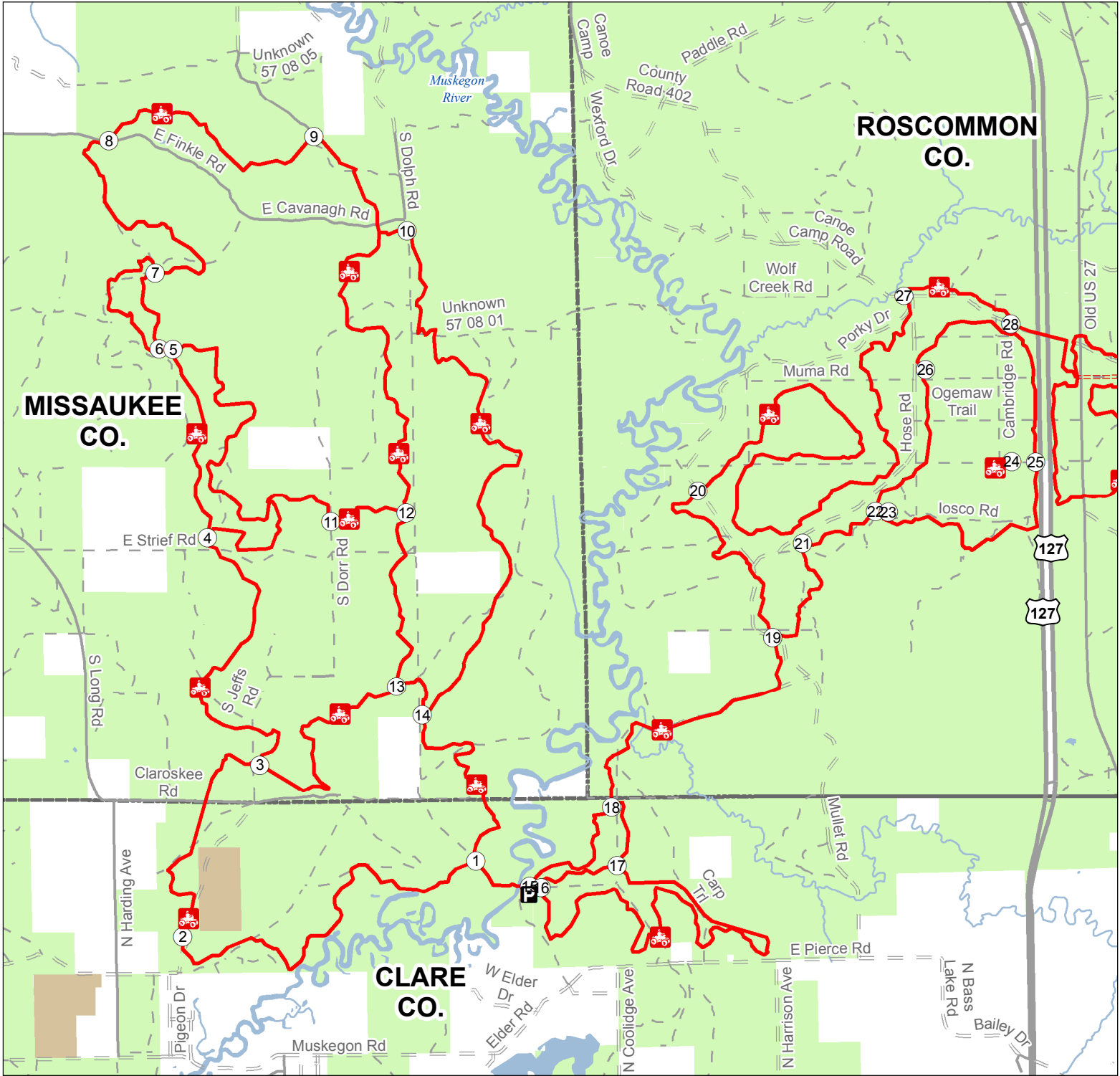




Leota Trail

Missaukee, Roscommon & Clare Counties, Michigan

ADVISORY: Trails and Routes have two-way traffic.
DISCLAIMER: Trails shown on this map are an approximate representation of the trail system at the time of publication and may not reflect current ground conditions.
STAY ON SIGNED TRAILS ONLY!



- Parking Lot
- Intersection
- ORV Trails
- ORV Route – ORVs of all sizes including off-road motorcycles. ORV license and trail permit required unless licensed by the Secretary of State.
- ORV Trail – ORVs 50 inches in width or less including off-road motorcycles. ORV license and trail permit required.
- Highway
- Paved Road
- Gravel Road
- Poor Dirt Road
- Lakes and Rivers
- State Forest Land
- Federal Land
- County Boundary

