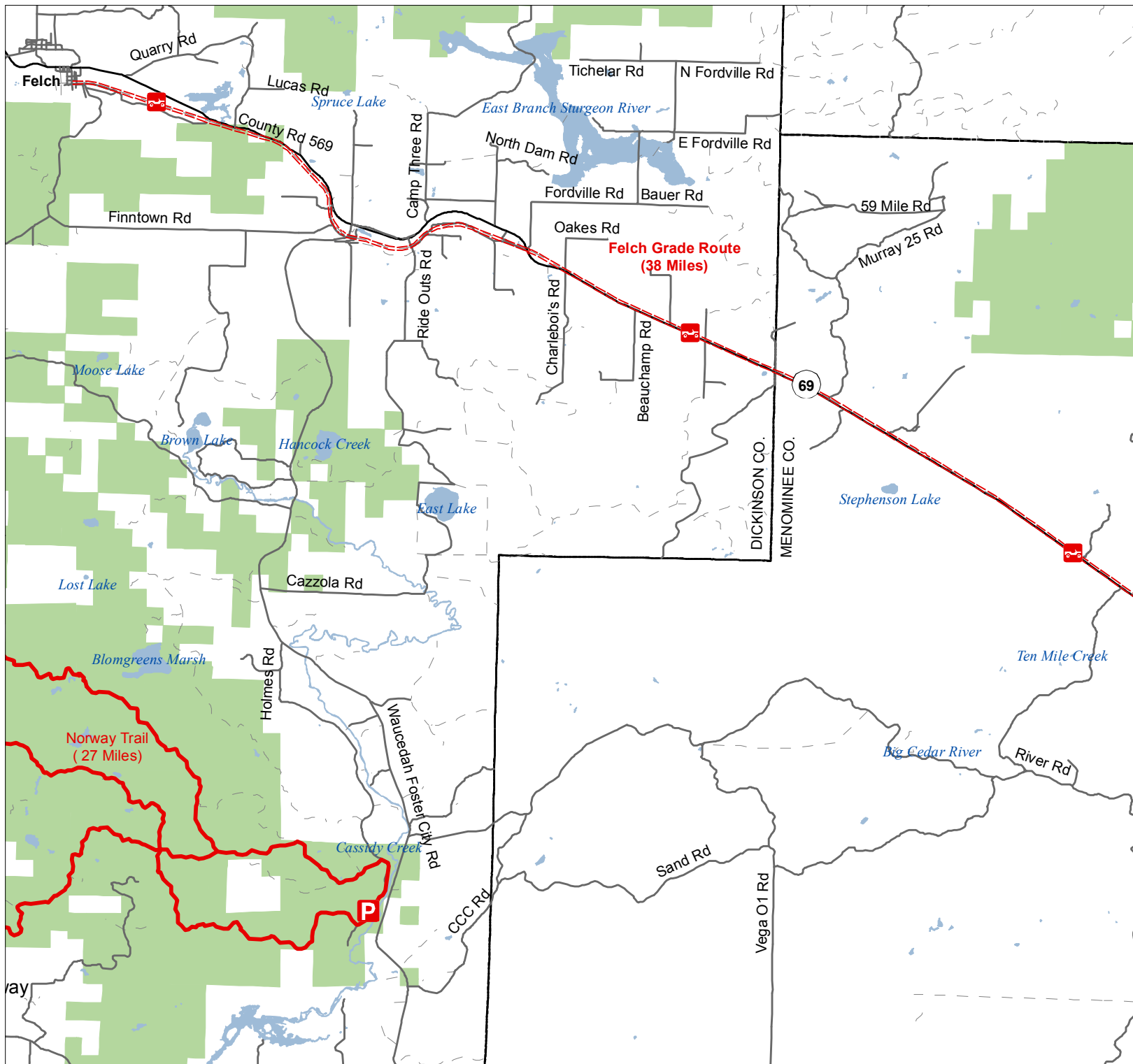


# Felch Grade Trail West

## Dickinson & Menominee Counties, Michigan



ORV Route – ORV's of all sizes including off-road motorcycles. (DNR license (ORV sticker) required unless licensed by the Secretary of State)

**Advisory:** Trails and Routes have two-way traffic.

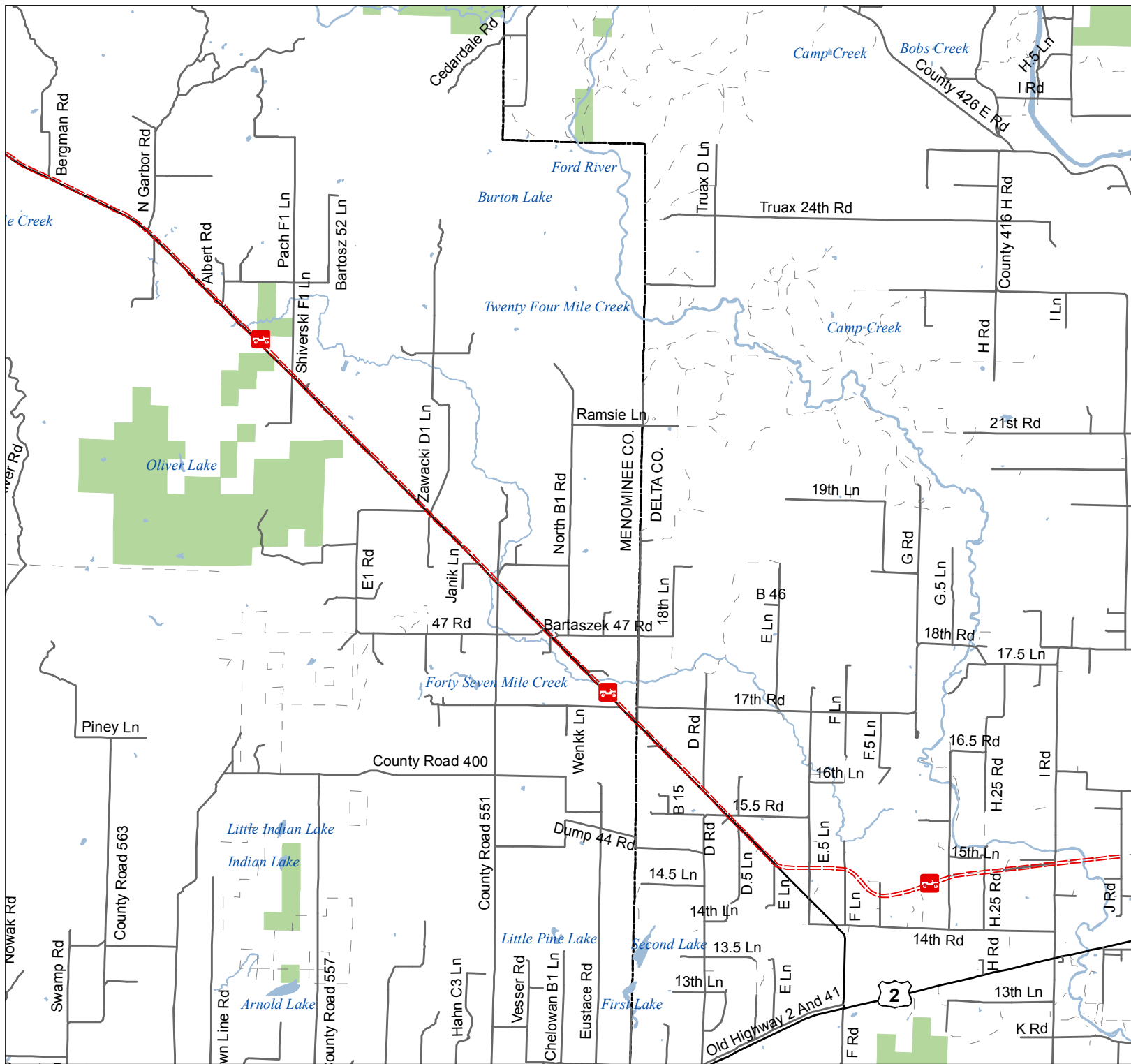
**Disclaimer:** Trails shown on this map are an approximate representation of the trail system at the time of publication and may not reflect current ground conditions. **STAY ON SIGNED TRAILS ONLY!**


- Trailhead Parking
- Highway
- Paved or Gravel Road
- Poor Dirt Road
- Lakes and Rivers
- State Forest
- County Boundaries



# Felch Grade Trail East








## Menominee & Delta Counties, Michigan



 ORV Route – ORV's of all sizes including off-road motorcycles. (DNR license (ORV sticker) required unless licensed by the Secretary of State)

**Advisory:** Trails and Routes have two-way traffic.

**Disclaimer:** Trails shown on this map are an approximate representation of the trail system at the time of publication and may not reflect current ground conditions. **STAY ON SIGNED TRAILS ONLY!**

-  Trailhead Parking
-  Highway
-  Paved or Gravel Road
-  Poor Dirt Road
-  Lakes and Rivers
-  State Forest
-  County Boundaries

0 0.5 1 2 Miles

