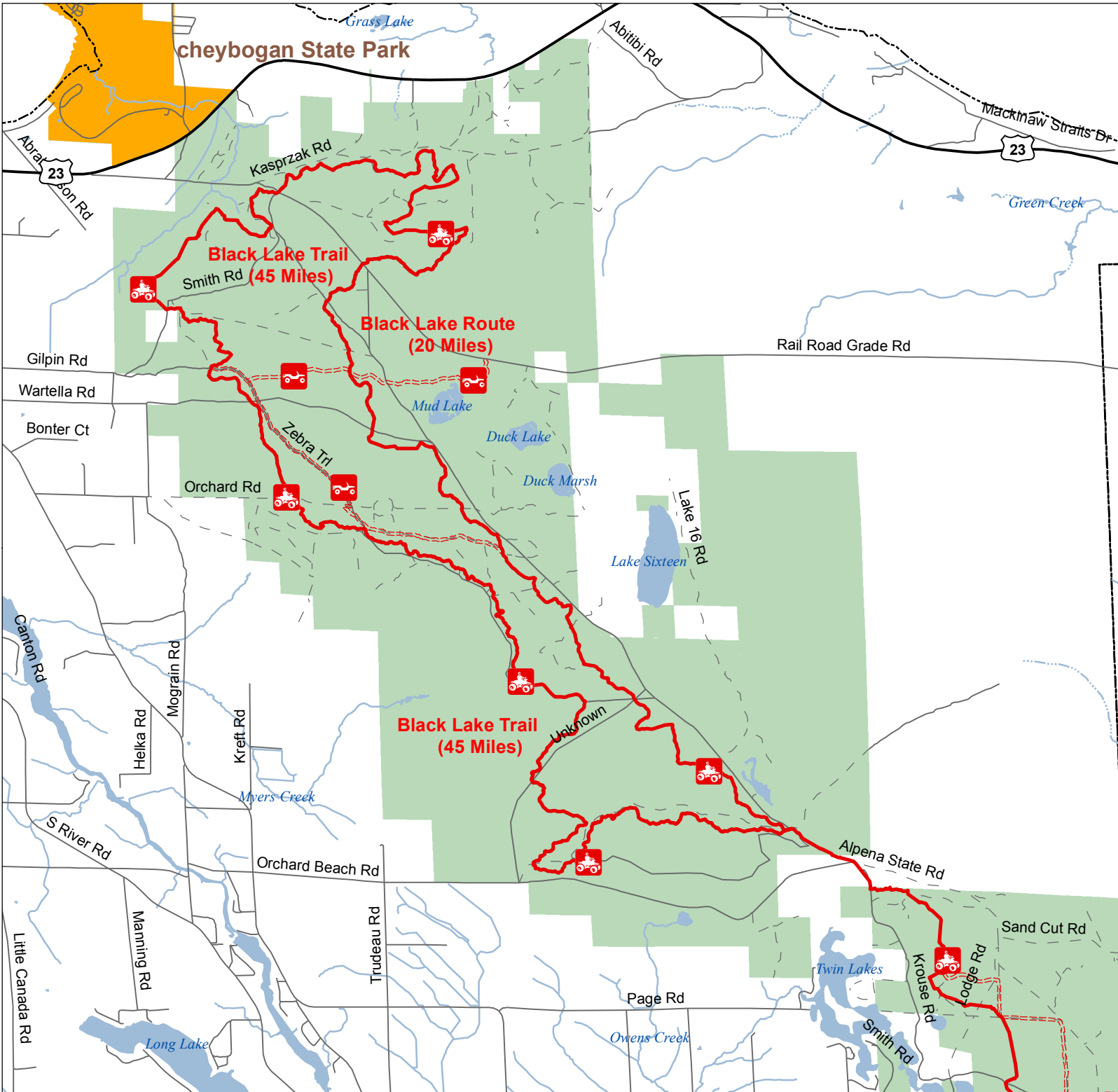




Black Lake Trail & Route North

Cheboygan County, Michigan

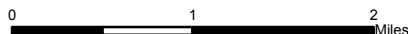


-  ORV Route – ORVs of all sizes including off-road motorcycles. ORV license and trail permit required unless licensed by the Secretary of State.
-  ORV Trail – ORVs 50 inches in width or less including off-road motorcycles. ORV license and trail permit required.

Advisory: Routes have two-way traffic.

Disclaimer: Trails shown on this map are an approximate representation of the trail system at the time of publication and may not reflect current ground conditions. **STAY ON SIGNED TRAILS ONLY!**

-  Highway
-  Paved or Gravel Road
-  Poor Dirt Road
-  Lakes and Rivers
-  State Forest
-  State Park
-  County Boundaries



Updated 2/27/2014

Black Lake Trail & Route South

Cheboygan & Presque Isle Counties, Michigan



- ORV Temporarily Reroute Trail - ORVs 50 inches in width or less including off-road motorcycles. ORV license and trail permit required.
- ORV Route - ORVs of all sizes including off-road motorcycles. ORV license and trail permit required unless licensed by the Secretary of State.
- ORV Trail - ORVs 50 inches in width or less including off-road motorcycles. ORV license and trail permit required.
- Trailhead Parking
- State Forest Campground
- Highway
- Paved or Gravel Road
- Poor Dirt Road
- Lakes and Rivers
- State Forest
- County Boundaries

Advisory: Routes have two-way traffic.
Disclaimer: Trails shown on this map are an approximate representation of the trail system at the time of publication and may not reflect current ground conditions. **STAY ON SIGNED TRAILS ONLY!**

