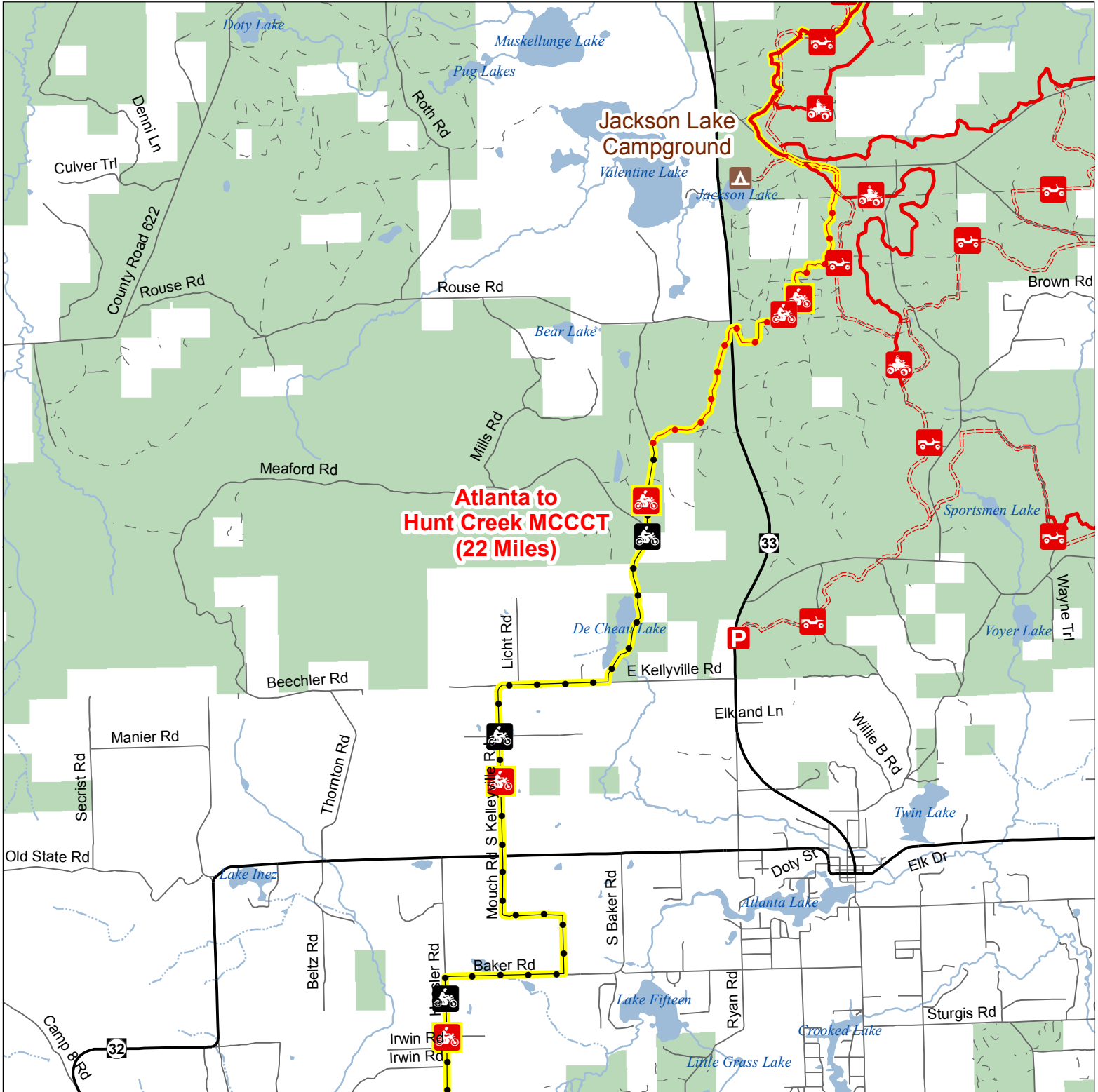


Atlanta to Hunt Creek MCCCT North

Montmorency County, Michigan

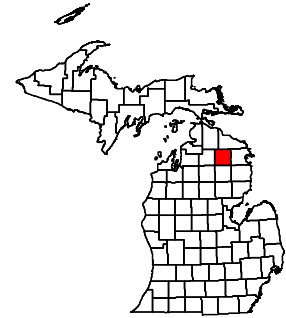
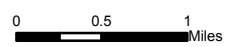


Atlanta to Hunt Creek MCCCT (22 Miles)

- ORV Trail – ORVs 50 inches in width or less including off-road motorcycles. ORV license and trail permit required.
- ORV Route – ORVs of all sizes including off-road motorcycles. ORV license and trail permit required unless licensed by the Secretary of State.
- Motorcycle Trail – Motorcycles only. (Secretary of State license required)
- Motorcycle Trail – Motorcycles Only. ORV license and trail permit required.
- Michigan Cross Country Cycle Trail (MCCCT)

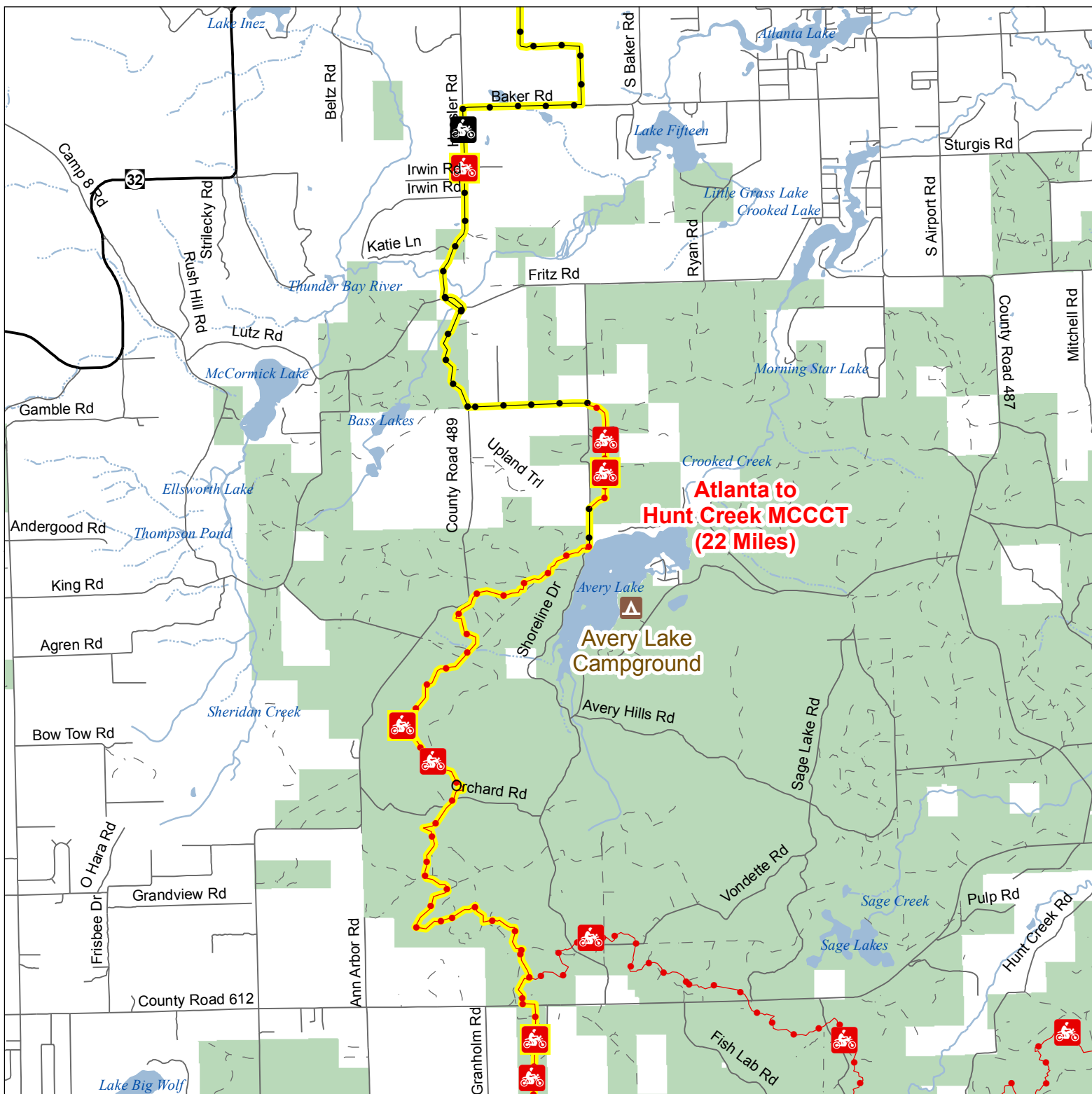
- State Forest Campgrounds
- Trailhead Parking
- Highway
- Gravel; Paved
- Poor Dirt
- Lakes and Rivers
- State Forest
- County Boundary

Advisory: Trails and Routes have two-way traffic
Disclaimer: Trails shown on this map are an approximate representation of the trail system at the time of publication and may not reflect current ground conditions.
STAY ON SIGNED TRAILS ONLY!





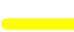
Atlanta to Hunt Creek MCCCT South








Montmorency County, Michigan

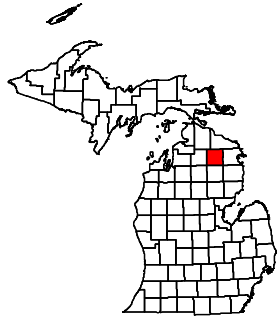


Atlanta to Hunt Creek MCCCT (22 Miles)

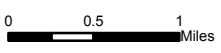
Avery Lake Campground

-  Motorcycle Trail – Motorcycles only. (Secretary of State license required)
-  Motorcycle Trail – Motorcycles Only. ORV license and trail permit required.
-  Michigan Cross Country Cycle Trail (MCCCT)

-  State Forest Campgrounds
-  Highway
-  Gravel; Paved
-  Poor Dirt
-  Lakes and Rivers
-  State Forest
-  County Boundary



Advisory: Trails and Routes have two-way traffic
Disclaimer: Trails shown on this map are an approximate representation of the trail system at the time of publication and may not reflect current ground conditions.
STAY ON SIGNED TRAILS ONLY!



Updated 4/21/2014