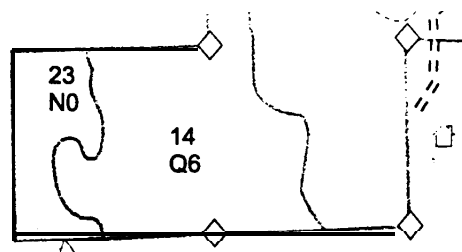


COMPARTMENT 41  
 T45N, R1W, SEC. 13-16, 21, 22  
 COUNTY: CHIPPEWA  
 UNIT: SAULT STE MARIE  
 FOREST: LAKE SUPERIOR  
 YOE: 2005  
 ACRES: 2,449 GIS CALCULATED  
 MAP REVISED: 6/20/2003  
 STAND EXAMINER: HERBERT AMES

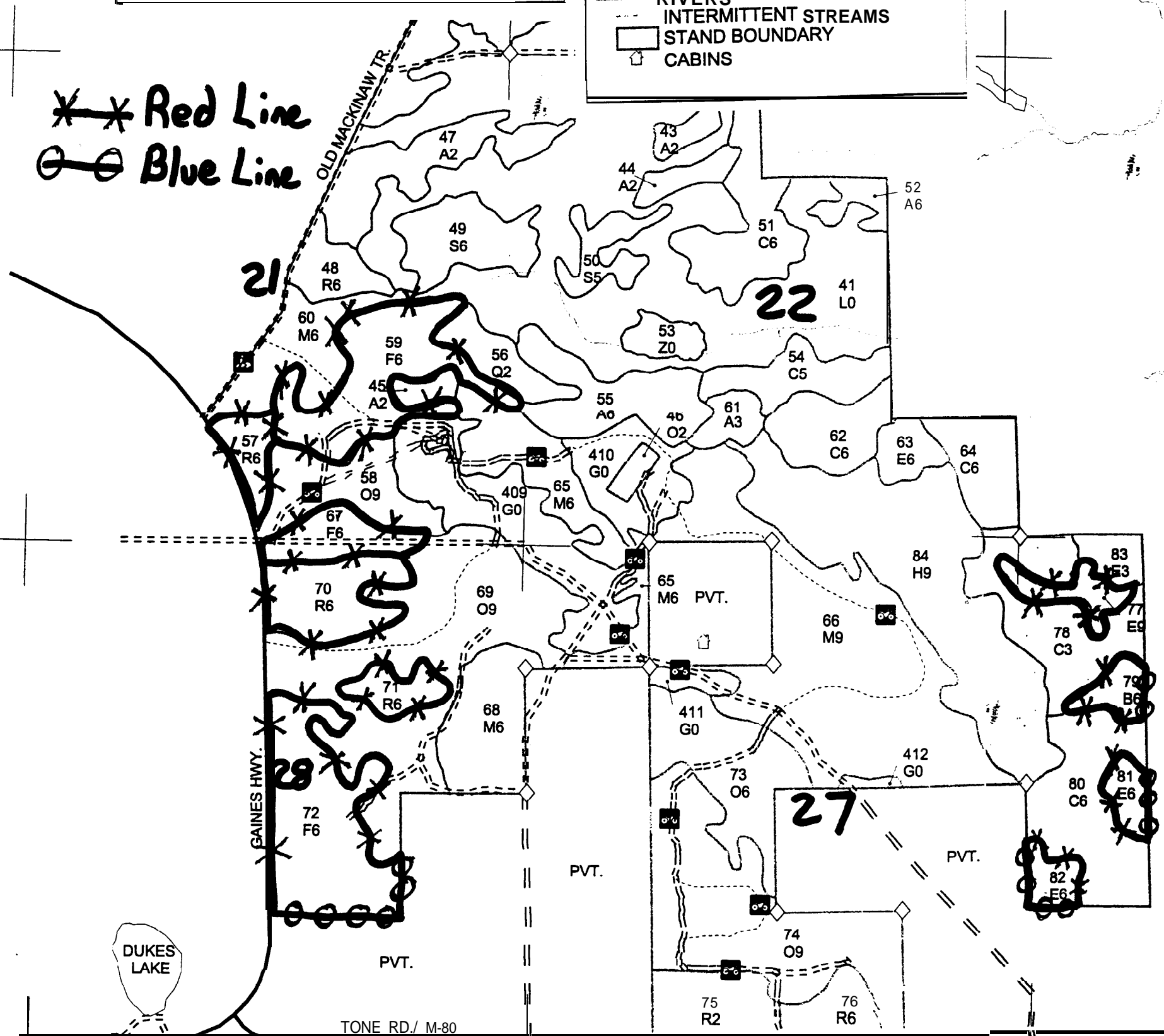
**LEGEND**

- ◇ RLS CORNER-DNR
- ◇ MIRIS CORNER
- PAVED ROADS
- == GRAVEL & GOOD DIRT ROADS
- === POOR DIRT ROADS
- - - TRAILS
- ☐ SNOWMOBILE TRAILS
- ☐ ORV TRAILS
- LAKES
- RIVERS
- - - INTERMITTENT STREAMS
- ☐ STAND BOUNDARY
- ☐ CABINS

30  
A6



**\* \* Red Line**  
**⊙ Blue Line**



23

**\* \* Red Line**  
**⊙ Blue Line**

PVT

26

Tone Rd / M 80