

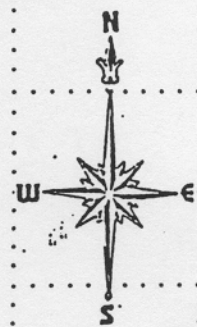
STATE OF MICHIGAN
DEPARTMENT OF NATURAL RESOURCES
TIMBER SALE MAP

SALE NO.	YEAR	SALE TYPE

STATE FOREST AND FOREST AREA GWINN MANAGEMENT UNIT	MAPPED BY J. KOSKI	DATE 9/15/2004
T. 44N R. 23W Section(s) 16	Sub. N $\frac{1}{2}$ SW $\frac{1}{4}$, S $\frac{1}{2}$ NW, SWNE, NWSE	Scale: 1 Inch = $\frac{1}{4}$ mile

COVER TYPE				DENSITY			
A - Aspen	H - Hemlock	P - Lowland Poplar	V - Bog or Marsh	1 - Non Stocked	7 - Saw Timber Poor		
B - Paper Birch	J - Jack Pine	Q - Mx Swamp Cnpr	W - White Pine	2 - Seedling Sapling Poor	8 - Saw Timber Medium		
C - Cedar	L - Lowland Brush	R - Red Pine	X - Non Stocked	3 - Seedling Sapling Well	9 - Saw Timber Well		
E - Swamp Hdws	M - Mpl, Bch, Brch	S - Black Spruce	Z - Water	4 - Pole Timber Poor			
F - Spruce Fir	N - Marsh	T - Tamarack		5 - Pole Timber Medium			
G - Grass	O - Oak	U - Upland Brush		6 - Pole Timber Well			

C.R. - TWO




9
16

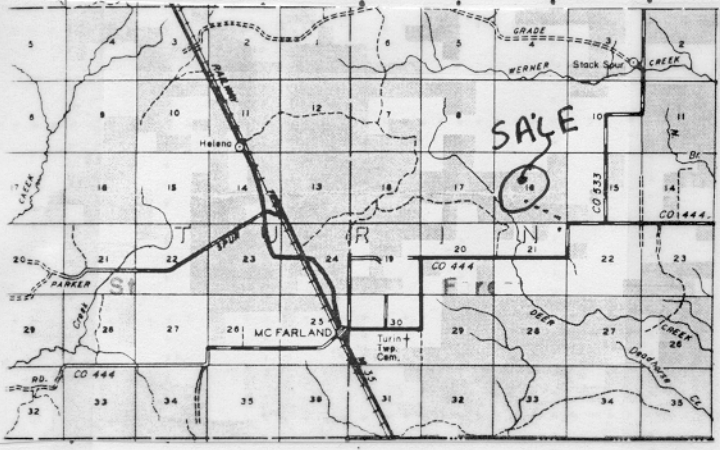


o-o Red paint

x-x yellow paint unit 2

1-4 payment units

 contract marking units 1&3



PVT TA

C.R. 444