



Michigan Department of Natural Resources - Forest Management Division
TIMBER SALE MAP

This information provided under authority of Part 525, Act 451 of 1994, as amended.

Sale No.	Year	Sale Type
32-002-05-01	04	selection

State Forest and Forest Management Unit: GWINN MANAGEMENT UNIT		Mapped By: K. LABUMBARD		Date: 9/15/2004
Township 44N	Range 26W	Section(s) 11 & 12	Subdivision E ¹ / ₂ Sec 11, NW ¹ / ₄ Sec 12	Scale: 1 inch = ¹ / ₄

Cover Type

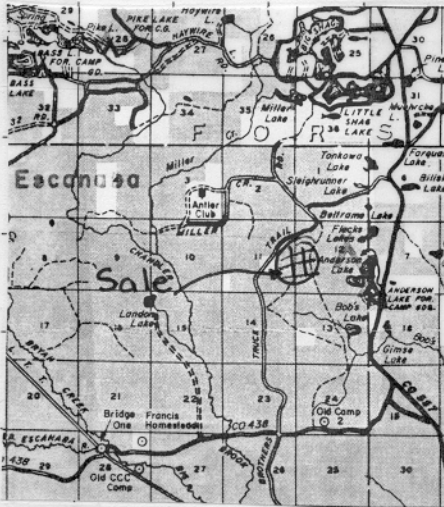
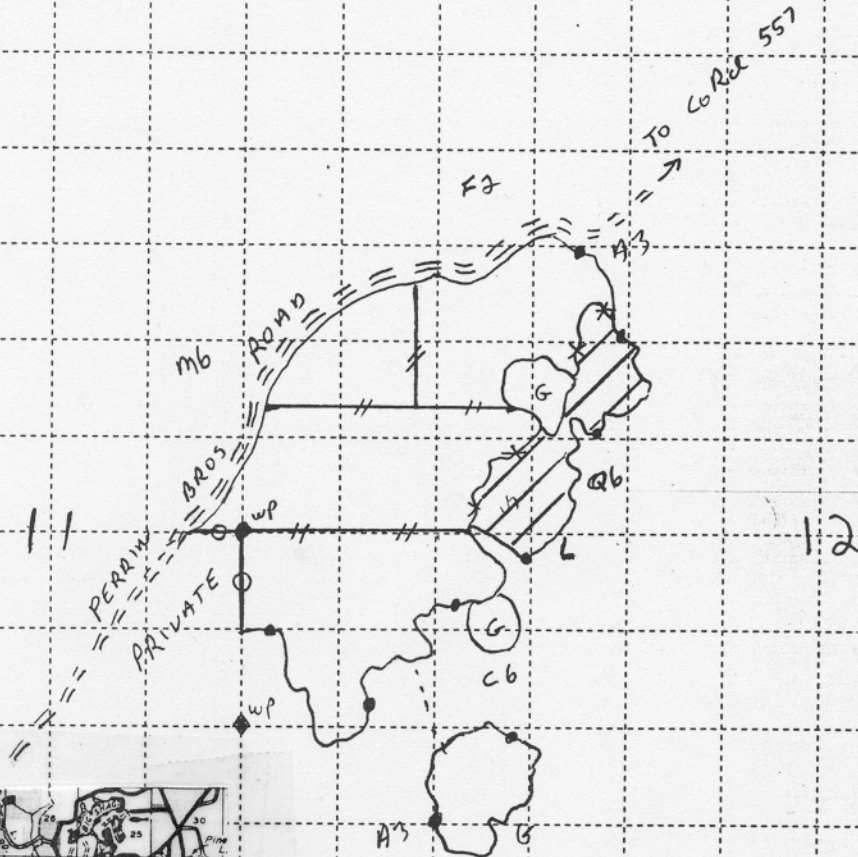
Density

A = Aspen	H = Hemlock	P = Lowland Poplar	V = Bog or Marsh	1 = Non Stocked	7 = Saw Timber Poor
B = Paper Birch	J = Jack Pine	Q = Mixed Swamp Cnfr	W = White Pine	2 = Seedling Sapling Poor	8 = Saw Timber Medium
C = Cedar	L = Lowland Brush	R = Red Pine	X = Non Stocked	3 = Seedling Sapling Well	9 = Saw Timber Well
E = Swamp Hdwoods	M = Mpl, Bch, Brch	S = Black Spruce	Z = Water	4 = Pole Timber Poor	
F = Spruce Fir	N = Marsh	T = Tamarack		5 = Pole Timber Medium	
G = Grass	O = Oak	U = Upland Brush		6 = Pole Timber Well	

PERRIN BROS HARDWOOD



141 ACRES



LEGEND

- BLUE PAINT LINE
- RED PAINT LINE
- RED "X" LINE
- RED "SLASH" LINE
- PAYMENT UNIT #
- MARKED AREA (115 AC)
- SEED TREE AREA (16 AC)