

STATE OF MICHIGAN
DEPARTMENT OF NATURAL RESOURCES
TIMBER SALE MAP

SALE NO.	YEAR	SALE TYPE

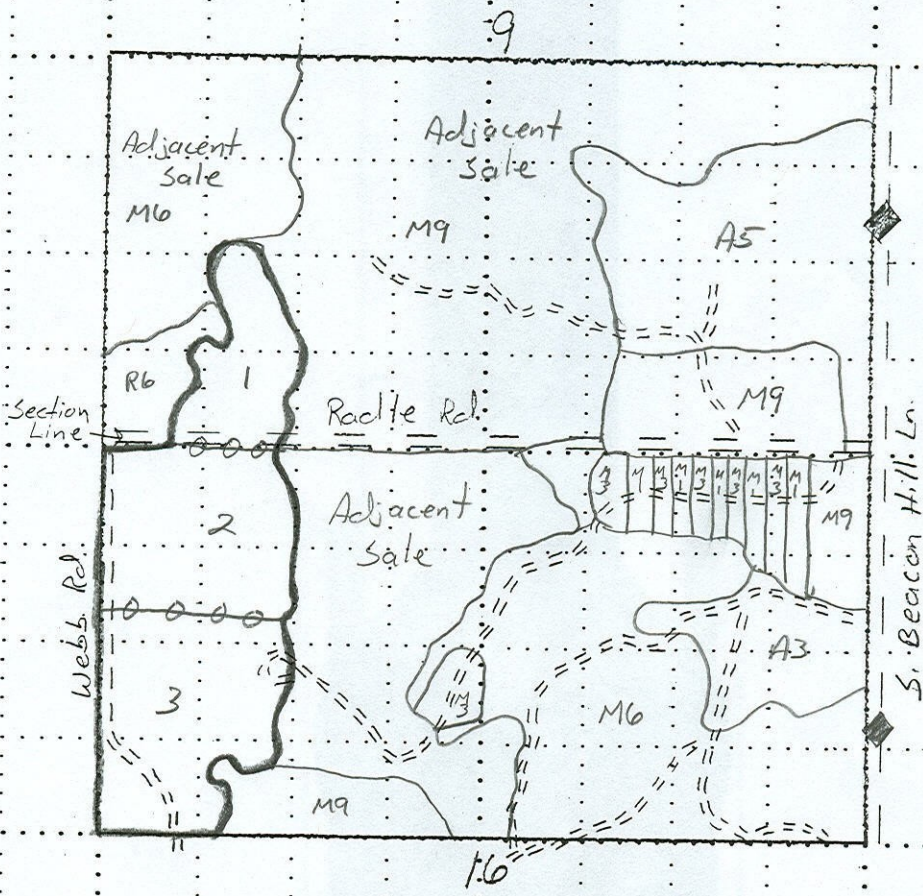
STATE FOREST AND FOREST AREA <i>Mackinaw State Forest - GRMUN</i>	MAPPED BY <i>S. Harris</i>	DATE <i>10/27/04</i>
T <i>36N</i> R <i>6W</i> Section(s) <i>9, 16</i>	Sub. <i>W 1/2 SW</i> <i>W 1/2 NW</i>	Scale: 1 inch = <i>1/4</i> mile

COVER TYPE

DENSITY

- | | | | | | |
|-----------------|--------------------|--------------------|------------------|---------------------------|-----------------------|
| A - Aspen | H - Hemlock | P - Lowland Poplar | V - Bog or Marsh | 1 - Non Stocked | 7 - Saw Timber Poor |
| B - Paper Birch | J - Jack Pine | Q - Mx Swamp Cnpr | W - White Pine | 2 - Seedling Sapling Poor | 8 - Saw Timber Medium |
| C - Cedar | L - Lowland Brush | R - Red Pine | X - Non Stocked | 3 - Seedling Sapling Well | 9 - Saw Timber Well |
| E - Swamp Hdws | M - Mpl, Bch, Brch | S - Black Spruce | Z - Water | 4 - Pole Timber Poor | |
| F - Spruce Fir | N - Marsh | T - Tamarack | | 5 - Pole Timber Medium | |
| G - Grass | O - Oak | U - Upland Brush | | 6 - Pole Timber Well | |

*Radle Hardwood
Emmet County
90 ac.*



- Red Painted Sale Boundary
- Blue Painted Sale Boundary
- Yellow Painted Unit Line
- Snowmobile Trail