

STATE OF MICHIGAN  
DEPARTMENT OF NATURAL RESOURCES  
TIMBER SALE MAP

SALE NO.	YEAR	SALE TYPE

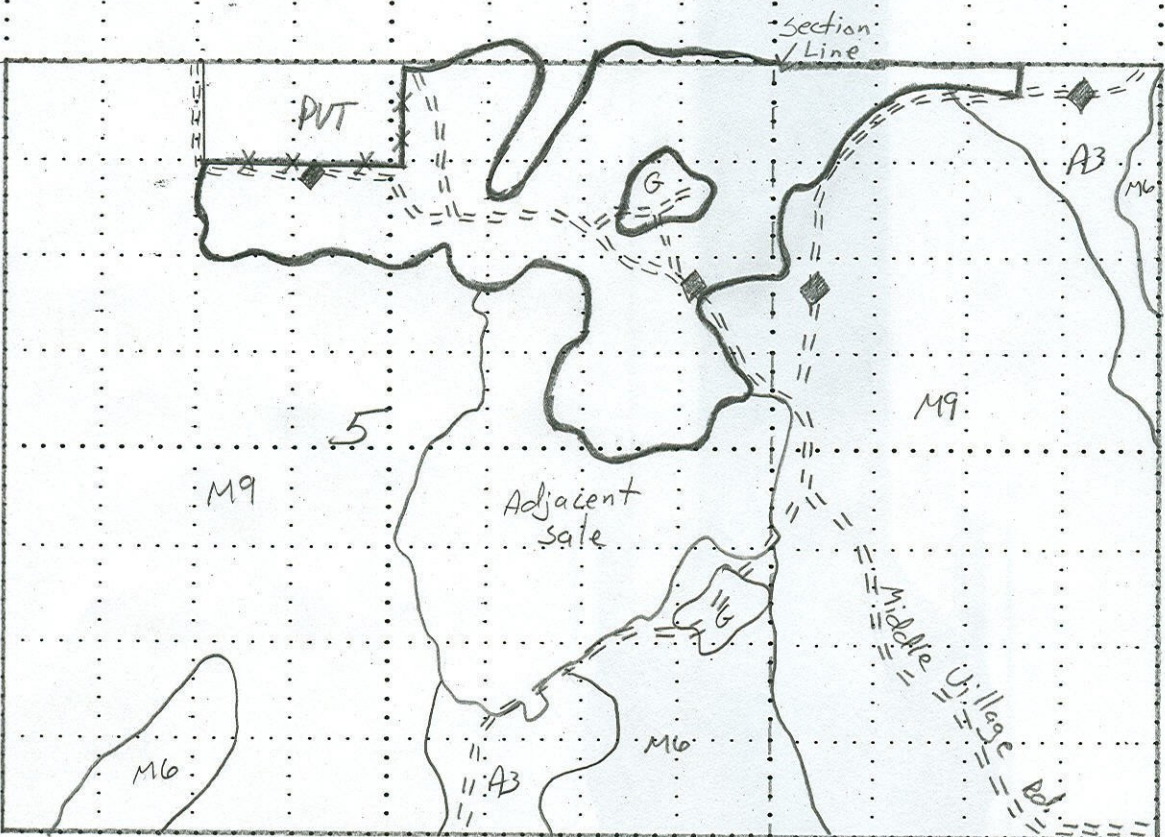
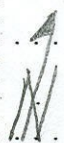
STATE FOREST AND FOREST AREA <i>Mackinaw State Forest - GRMUN</i>	MAPPED BY <i>S. Harig</i>	DATE <i>10/27/04</i>
<i>37N 6W 32 4 5</i> T <i>36N</i> R <i>6W</i> Section(s) <i>5</i>	Sub. <i>S 1/2 SE N 1/2 NW NE 1/4, NENW</i>	Scale: 1 inch = <i>1/4</i> mile

COVER TYPE

DENSITY

- |                 |                    |                    |                  |                           |                       |
|-----------------|--------------------|--------------------|------------------|---------------------------|-----------------------|
| A - Aspen       | H - Hemlock        | P - Lowland Poplar | V - Bog or Marsh | 1 - Non Stocked           | 7 - Saw Timber Poor   |
| B - Paper Birch | J - Jack Pine      | Q - Mx Swamp Cnpr  | W - White Pine   | 2 - Seedling Sapling Poor | 8 - Saw Timber Medium |
| C - Cedar       | L - Lowland Brush  | R - Red Pine       | X - Non Stocked  | 3 - Seedling Sapling Well | 9 - Saw Timber Well   |
| E - Swamp Hdws  | M - Mpl, Bch, Brch | S - Black Spruce   | Z - Water        | 4 - Pole Timber Poor      |                       |
| F - Spruce Fir  | N - Marsh          | T - Tamarack       |                  | 5 - Pole Timber Medium    |                       |
| G - Grass       | O - Oak            | U - Upland Brush   |                  | 6 - Pole Timber Well      |                       |

*North End Hardwood  
Emmet Co.  
142 ac.*



- Red Painted Sale Boundary*
- Blue Painted Sale Boundary*
- Yellow Painted Unit Line*
- Snowmobile Trail*