

STATE OF MICHIGAN
DEPARTMENT OF NATURAL RESOURCES
TIMBER SALE MAP

SALE NO.	YEAR	SALE TYPE

STATE FOREST AND FOREST AREA

Mackinaw State Forest - GRMUN

MAPPED BY

S. Harig
5 1/2 SE 1/4

DATE

10/27/04

T 36N R 6W Section(s) 5

Sub. SE 1/4 36NW, NW 36W

Scale: 1 inch = 1/4 mile

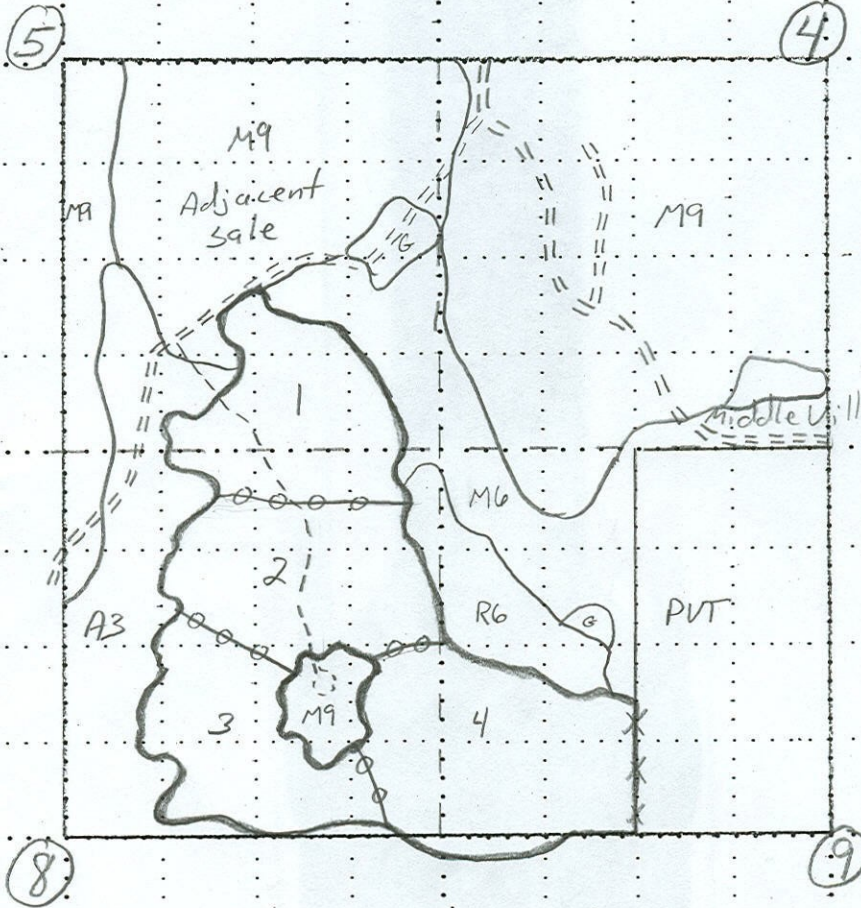
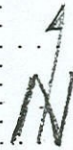
COVER TYPE

DENSITY

- | | | | | | |
|---------------|--------------------|--------------------|------------------|---------------------------|-----------------------|
| - Aspen | H - Hemlock | P - Lowland Poplar | V - Bog or Marsh | 1 - Non Stocked | 7 - Saw Timber Poor |
| - Paper Birch | J - Jack Pine | Q - Mx Swamp Cnpr | W - White Pine | 2 - Seedling Sapling Poor | 8 - Saw Timber Medium |
| - Cedar | L - Lowland Brush | R - Red Pine | X - Non Stocked | 3 - Seedling Sapling Well | 9 - Saw Timber Well |
| - Swamp Hdws | M - Mpl, Bch, Brch | S - Black Spruce | Z - Water | 4 - Pole Timber Poor | |
| - Spruce Fir | N - Marsh | T - Tamarack | | 5 - Pole Timber Medium | |
| - Grass | O - Oak | U - Upland Brush | | 6 - Pole Timber Well | |

E1 Diablo Hardwood
Emmet County

162 ac.



- Red Painted Sale Boundary
- Blue Painted PVT Boundary
- Yellow Painted Unit Line