

STATE OF MICHIGAN  
DEPARTMENT OF NATURAL RESOURCES  
TIMBER SALE MAP

SALE NO.	YEAR	SALE TYPE

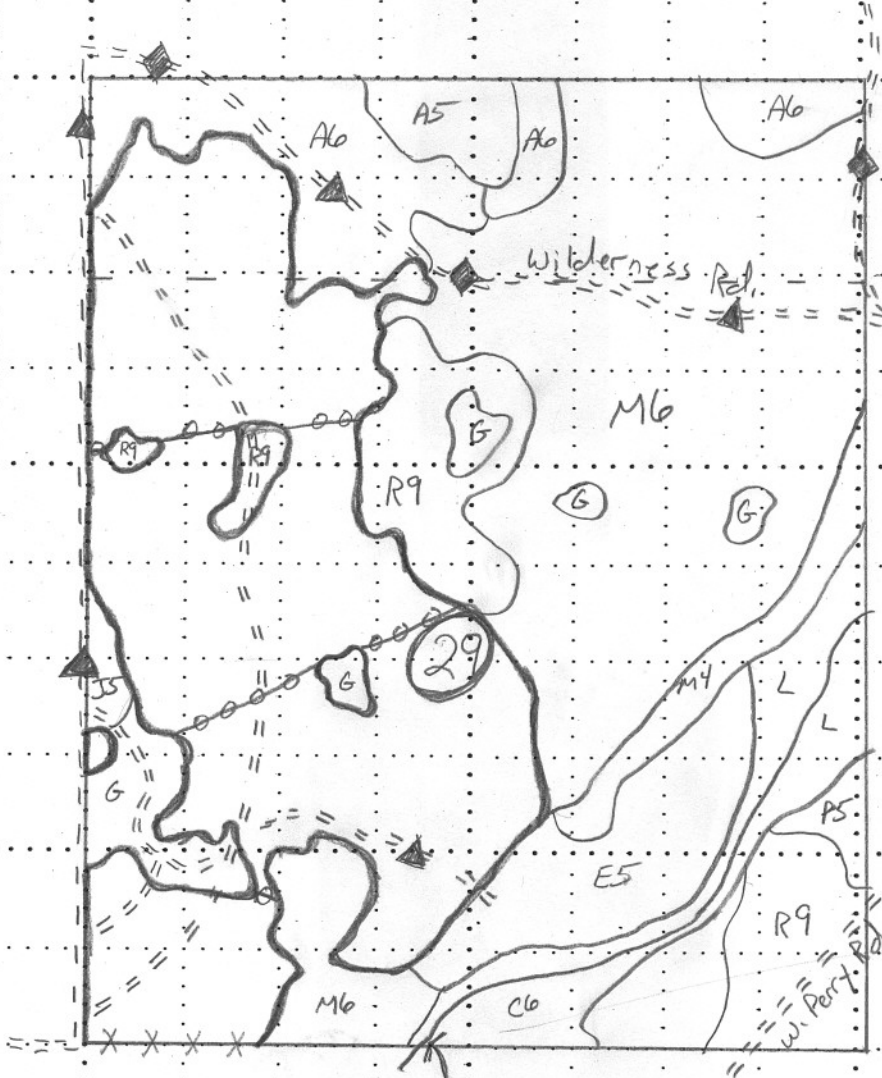
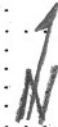
STATE FOREST AND FOREST AREA		MAPPED BY	DATE
Mackinaw State Forest - GRMUN.		Contractors / Harig	2/23/05
T 33W	R 3W	Section(s) 20 29	Sub. NW 1/4, SW 1/4, SWNE, W 1/2 SE
Scale: 1 inch = 1/4 mile			

COVER TYPE

DENSITY

- |                 |                    |                    |                  |                           |                       |
|-----------------|--------------------|--------------------|------------------|---------------------------|-----------------------|
| A - Aspen       | H - Hemlock        | P - Lowland Poplar | V - Bog or Marsh | 1 - Non Stocked           | 7 - Saw Timber Poor   |
| B - Paper Birch | J - Jack Pine      | Q - Mx Swamp Cnpr  | W - White Pine   | 2 - Seedling Sapling Poor | 8 - Saw Timber Medium |
| C - Cedar       | L - Lowland Brush  | R - Red Pine       | X - Non Stocked  | 3 - Seedling Sapling Well | 9 - Saw Timber Well   |
| E - Swamp Hdws  | M - Mpl, Bch, Brch | S - Black Spruce   | Z - Water        | 4 - Pole Timber Poor      |                       |
| F - Spruce Fir  | N - Marsh          | T - Tamarack       |                  | 5 - Pole Timber Medium    |                       |
| G - Grass       | O - Oak            | U - Upland Brush   |                  | 6 - Pole Timber Well      |                       |

Wilderness Hardwood  
Cheboygan County  
271 ac.



- Red Painted Sale Boundary
- Blue Painted Sale Boundary
- Yellow Painted Unit Line
- ORV Trail
- Snowmobile Trail