



**TIMBER SALE MAP**

This information provided under authority of Part 525, Act 451 of 1994, as amended.

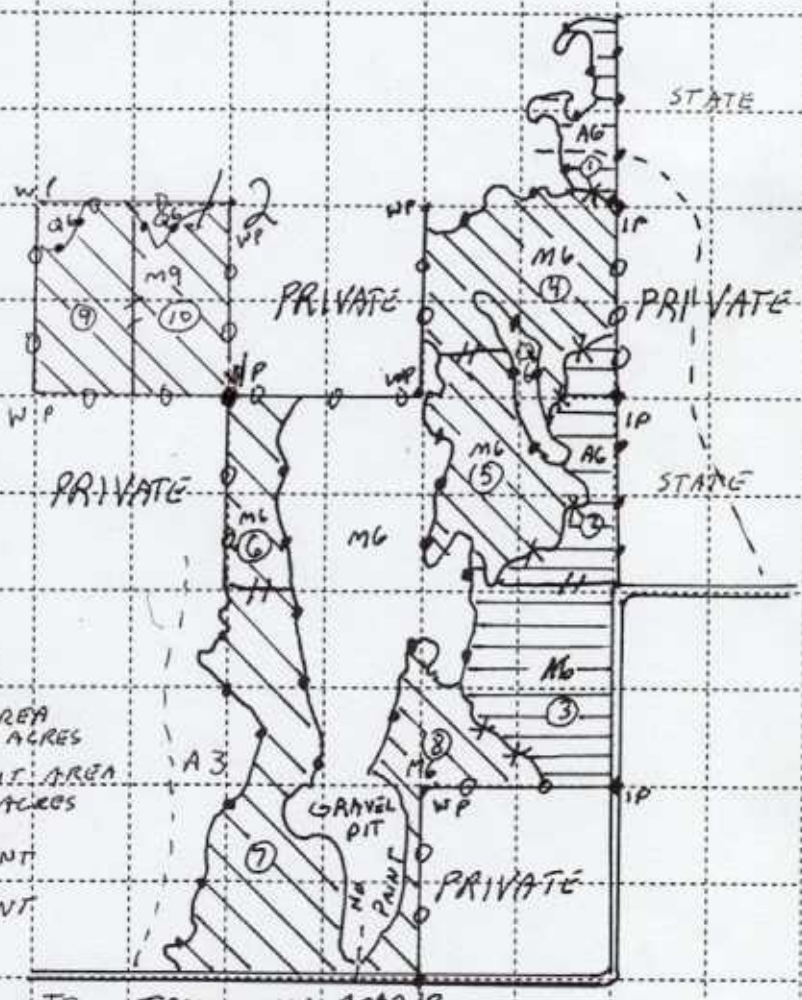
Sale No.	Year	Sale Type
023	06	01

State Forest and Forest Management Unit: <b>GWINN</b>		Mapped By: <b>JERRY MOHLMAN</b>		Date: <b>7-26-2005</b>
Township <b>T44N</b>	Range <b>R21W</b>	Section(s) <b>12, 11</b>	Subdivision // - <b>NENE, N'NE, SENE, SENW</b> <b>12-SENE, NESE, NENW, NENE, 12-NESE, SWSE</b>	Scale: 1 inch = <b>1/4 MILE</b>

Cover Type				Density			
A = Aspen	H = Hemlock	P = Lowland Poplar	V = Bog or Marsh	1 = Non Stocked	7 = Saw Timber Poor		
B = Paper Birch	J = Jack Pine	Q = Mixed Swamp Cnfr	W = White Pine	2 = Seedling Sapling Poor	8 = Saw Timber Medium		
C = Cedar	L = Lowland Brush	R = Red Pine	X = Non Stocked	3 = Seedling Sapling Well	9 = Saw Timber Well		
E = Swamp Hdwoods	M = Mpl, Bch, Brch	S = Black Spruce	Z = Water	4 = Pole Timber Poor			
F = Spruce Fir	N = Marsh	T = Tamarack		5 = Pole Timber Medium			
G = Grass	O = Oak	U = Upland Brush		6 = Pole Timber Well			



# TROUT LAKE ROAD PIT SALE



- LEGEND**
- MARKED AREA 162 ACRES
  - CLEARCUT AREA 59 ACRES
  - SALE BOUNDARIES
  - UNIT BOUNDARIES
  - BLUE PAINT
  - RED PAINT
  - RED H
  - RED X
  - UNIT #s
  - REGISTERED CORNER