



TIMBER SALE MAP

This information provided under authority of Part 525, Act 451 of 1994, as amended.

Unit No.	Sale No.	Year	Sale Type
32	103	05	01

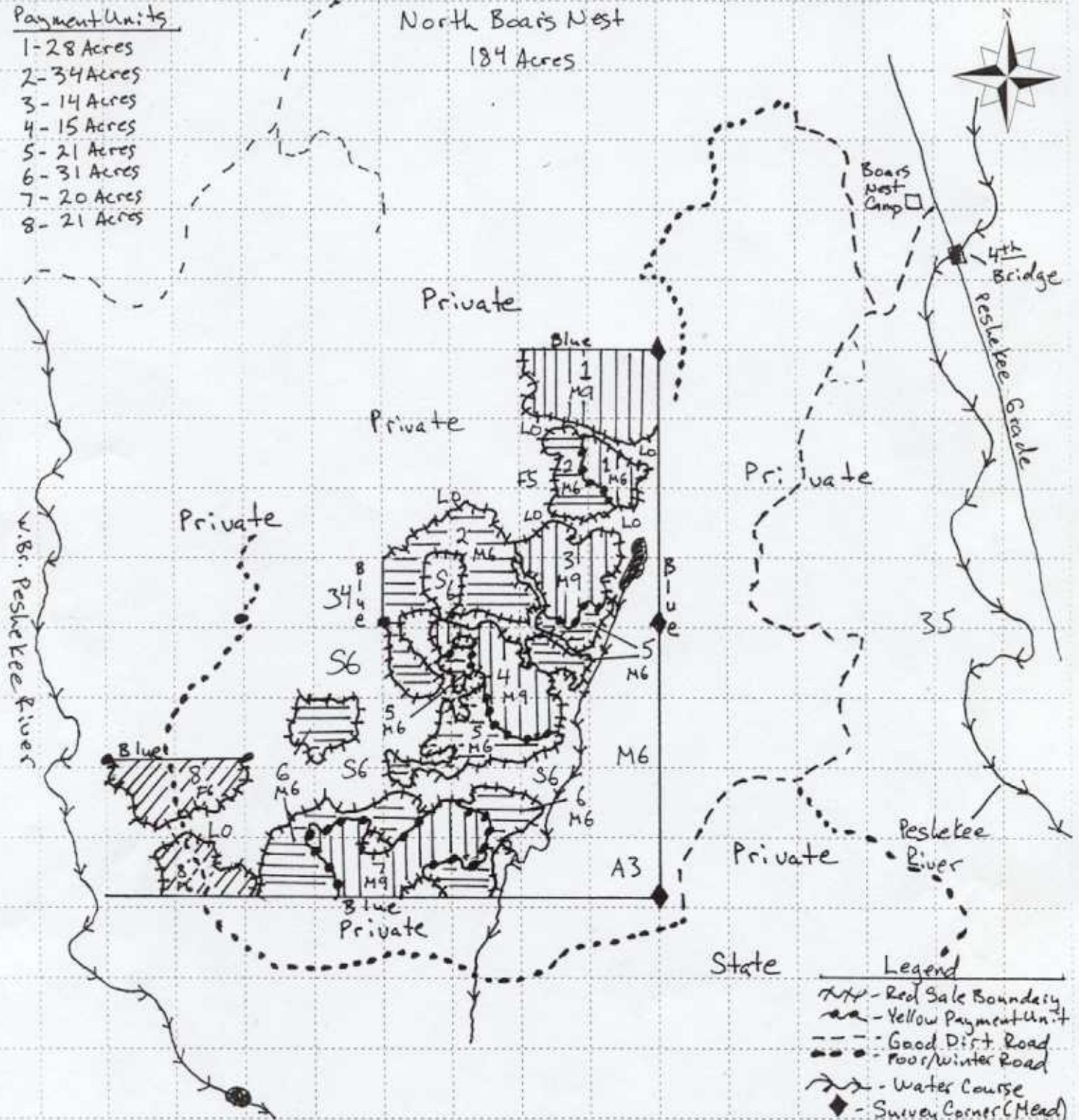
Forest Management Unit Guinn		Mapped by: Tom Seablom	Cruised by: Tom Seablom - units 2, 5, 6, & 8	Date: 5-23-05
Township 49N	Range 30W	Section(s) 34	Subdivision NENE, SENE, SWPE, SE, NESW, S&SW	Scale: 1 inch = 1/4 mile

COVER TYPE					DENSITY			
A = Aspen	F = Spruce Fir	L = Lowland Brush	Q = Mixed Swamp Cnfr	V = Bog or Marsh	1 = Non Stocked	6 = Pole Timber Well		
B = Paper Birch	G = Grass	M = Maple, Beech, Birch	R = Red Pine	W = White Pine	2 = Seedling Sapling Poor	7 = Saw Timber Poor		
C = Cedar	H = Hemlock	N = Marsh	S = Black Spruce	X = Non Stocked	3 = Seedling Sapling Well	8 = Saw Timber Medium		
D = Tired Bog	J = Jack Pine	O = Oak	T = Tamarack	Y = Sand Dunes	4 = Pole Timber Poor	9 = Saw Timber Well		
E = Swamp Hardwoods	K = Rock	P = Lowland Poplar	U = Upland Brush	Z = Water	5 = Pole Timber Medium			

Payment Units

- 1- 28 Acres
- 2- 34 Acres
- 3- 14 Acres
- 4- 15 Acres
- 5- 21 Acres
- 6- 31 Acres
- 7- 20 Acres
- 8- 21 Acres

North Boar's Nest
184 Acres



Legend

- Red Sale Boundary
- Yellow Payment Unit
- Good Dirt Road
- Poor/Winter Road
- Water Course
- Survey Corner (Head)
- GPS Corner (Head)