



**TRAVERSE CITY FOREST MANAGEMENT UNIT  
COMPARTMENT REVIEW PRESENTATION**

**COMPARTMENT # 150 ENTRY YEAR: 2011**

**Compartment Acreage: 1712      County: Kalkaska**

---

**Stand Examiner:** Donna Hagan

**Legal Description:** T25N,R5W,Sec. 28,33,34

**Management Goals:** Fletcher Sharptail Management Area and the northern part of the Grass Lake Waterfowl Area.

**Soil and Topography:** Roselawn and Rubicon sand. Flat terrain.

**Ownership Patterns, Development, and Land Use in and Around the Compartment:**

Mostly state land with a small amount of private property. Land use is primarily hunting and snowmobiling.

**Unique, Natural Features (include only non-site specific and non-sensitive information):**

A special concern plant and animal is listed in the Natural Features Inventory.

**Archeological, Historical, and Cultural Features (include only non-site specific and non-sensitive information):** There are concerns within this compartment.

**Special Management Designations or Considerations:** Sharptail grouse nesting and dancing grounds.

**Watershed and Fisheries Considerations:** None.

**Wildlife Habitat Considerations:** The well drained soils of this compartment predominately support open grassland, brush, and savanna type communities. Several aspen, oak, and pine stands are also found here and provide added diversity, including hard mast and cover in the form of young deciduous stands.

Grassland communities will be treated on a rotational basis with prescribed fire. Burning will benefit these communities by setting back woody encroachment, stimulating native herbaceous vegetation and berry production, and recycling nutrients. Many rare species of plants and animals depend on these fire-prone grasslands. Grassland complexes on State Forest land to the north and south should be managed in conjunction with compartment 150.

Aspen harvests should retain snags and den trees, leave trees, and downed logs in order to replicate a wildfire-altered forest and increase wildlife use by species like grouse, woodcock, golden-winged warbler, and deer. Oak treatments should leave some mature mast-producing trees and protect of den/nest trees while maintaining tree species diversity.

Open-land associates found here include the eastern bluebird, sandhill crane, badger, upland sandpiper, smooth green snake, white-tailed deer, wild turkey, and a potential remnant population of sharp-tailed grouse.

**Mineral Resource and Development Concerns and/or Restrictions:** Surface sediments consist of glacial outwash sand and gravel and postglacial alluvium. The glacial drift thickness varies between 400 and 600 feet. Beneath the glacial drift is the Mississippian Michigan Formation. The Michigan is quarried for gypsum elsewhere in the State. Gravel pits are not located in the area, but there may be some potential. The Garfield 30 Field is located one mile to the west. The field produces from the Ordovician Prairie du Chien. None of the State's minerals are leased in this Compartment.

**Vehicle Access:** A lot of seasonal county roads run throughout this compartment.

**Survey Needs:** None needed.

**Recreational Facilities and Opportunities:** The Cranberry Lake and the West Higgins-Stratford Snowmobile Trails are located in this compartment. The Cranberry Lake Trail runs southerly along the eastern edge of section 28 and the western part of section 34. The West Higgins-Stratford Trail just skirts the southern tip of section 34. The compartment is signed as a special wildlife viewing area, primarily because of the formerly active sharp-tailed grouse dancing ground.

**Fire Protection:** This compartment is protected by the Kalkaska Field Office. Travel time can be an issue due to the distance from the Kalkaska Field Office. Section 34 is within Zone 5, which means that additional units from Manton, Grayling, and Houghton Lake also respond on High and above fire days. Additional Field Offices also shift equipment. VFD Fire Protection is from the Garfield Twp. Fire Department. Access is acceptable, and urban innerface is not an issue. Forestry and Wildlife have worked together and have a long range management plan for prescribed fire to maintain openings.

**Additional Compartment Information:**

**\*\*\*\* Cover type details, proposed treatments and stands designated as FDF are listed in the attached reports:**

- Cover Type by Age Class**
- Cover Type by Management Objective**
- Compartment Volume Summary**
- Proposed Treatments – No Limiting Factors**
- Proposed Treatments – With Limiting Factors**

**\*\*\*\* The following information is displayed on the attached compartment maps:**

- Base feature information, stand numbers, cover types**
- Proposed treatments**
- Proposed road access system**
- Suggested potential old growth**



PERE MARQUETTE STATE FOREST

TRAVERSE CITY FOREST MGT UNIT

KALKASKA COUNTY

COMPARTMENT: 150

Table 3A

(acres shown in boxes)

MANAGEMENT OBJECTIVE TYPE

COVER TYPE	A	S	V	C	G	H	J	I	L	P	N	Q	X	O	B	R	K	Y	F	E	T	D	U	M	Z	W	Total
A Aspen	42																										42
G Grass					481																						481
J Jack Pine	18						11																				29
L Lowlnd Brush									46																		46
X Non Stocked													16														16
O Oak														51													51
R Red Pine														70	3												73
U Upland Brush																								971			971
W White Pine																										3	3
<b>Total</b>	60				481		11		46				16	121	3									971		3	1712

PERE MARQUETTE STATE FOREST

TRAVERSE CITY FOREST MGT UNIT

KALKASKA COUNTY

COMPARTMENT: **150**

*Table 10 - COMPARTMENT VOLUME SUMMARY - ALL STANDS*

COMPARTMENT SUMMARY			
TOTAL VOLUME		CUT VOLUME	
Hardwood	864 Cds	Hardwood	532 Cds
Hardwood	15 Mbf	Softwood	410 Cds
Softwood	864 Cds	Softwood	491 Mbf
Softwood	838 Mbf	Sum CutVol	1924 Cds
Sum TotVol	3434 Cds		
<b>Total Cmpt Acres</b>		Acres Proposed For Cut.....	110
1712			

**TRAVERSE CITY FOREST MGT UNIT**

**Proposed Treatments  
With NO Limiting Factors**

**Compartment: 150 Entry Year: 2011**

Stand	Cover Type	Acres	Age	Site Index	Mgt Obj	Condition	Method Cut	Harvest Priority	Cultural Need	FDF Status
1	R6	29	78	45	oak	mature	shelterwood-seed	2		
<p>comnts Fmd : 2009 - DAH - Nice oak regeneration coming in. Heavily thin red pine to allow continual cover for the oak. PMR Update 2005. Sale #050-01-01, Cut all Jack Pine and marked Red Pine. No estimate of residual BA from O/I so this is a guess. 1995 - Sale #11-91, but did not sell. Not much understory.</p> <p>Wld : JP - RP mix, JP dying out. Some deer winter sign in 1/99.</p>										
2	R9	41	78	49	oak	mature	shelterwood-seed	2		
<p>comnts Fmd : 2009 - DAH - Nice oak regeneration coming in. Heavily thin red pine to allow continual cover for the oak. PMR updates 2005. Sale # 0500101. Four Point Red. Cut 40 ba sawlogs from stand. 1995 - Half of stand has just an O1 understory, then it goes to O2,J2, then just O2.</p> <p>Wld : Oak, cherry, jack understory.</p>										
14	A6	1	54	55	aspen (upland)	mature	final harvest	1	natural regeneration	
<p>comnts Fmd : Sharptail area.</p>										
15	U2	417			upland brush	nonstocked		0	opening maintenance	
<p>Wld : Sharptail mgt.area. Stagger burns in this compartment. Establish seed sources of native herbaceous plantings along western edges. Plant disced fire line to rye.</p>										
16	A6	1	54	55	aspen (upland)	mature	final harvest	1	natural regeneration	
<p>comnts Fmd : Sharptail area.</p>										
17	U3	57			upland brush	nonstocked		0	opening maintenance	
<p>comnts Fmd : Heavier amounts of choke cherry present in this U type.</p> <p>Wld : Sharptail mgt.area. Use a brush mower to reduce the brush in this stand. Plant disced fire line to rye.</p>										
18	A6	3	45	70	aspen (upland)	mature	final harvest	1	natural regeneration	
<p>Wld : Sharptail mgt. Area.</p>										
19	A6	7	45	70	aspen (upland)	mature	final harvest	1	natural regeneration	
<p>Wld : Sharptail mgt. Area.</p>										
21	U2	368			upland brush	nonstocked		0	opening maintenance	
<p>comnts Fmd : Clumps of aspen and choke cherry are present in this U type.</p> <p>Wld : Sharptail mgt.area. Prescribe burn. Consider clearing strip of timber along south section line next entry to connect open expanse between this stand and compartment to south in Missaukee County. Establish seed sources of native herbaceous plantings along western edges. Plant disced fire line to rye.</p>										
22	J5	12	62	50	aspen (upland)	mature	final harvest	1	natural regeneration	
<p>comnts Fmd : 2009 -DAH- Hodge podge stand. Goes between mainly aspen and jack pine. Heavy red maple regen in areas. East side red and white pine logs.</p> <p>Wld : Stand slopes down toward wetland, water at or near surface in places. Sedgely, much mortality and windthrow. Might be a tricky cut, may need to buffer the wetland area. No cutting north of 2 track and leave all oaks for mast production.</p>										
23	A6	1	45	70	aspen (upland)	mature	final harvest	1	natural regeneration	
<p>Wld : Sharptail mgt. Area.</p>										
24	U3	84			upland brush	nonstocked		0	opening maintenance	
<p>comnts Fmd : Heavier amounts of choke cherry present in this U type. Has not been burned in a while.</p> <p>Wld : Sharptail mgt.area. Use a brush mower to reduce the brush in this stand. Establish seed sources of native herbaceous plantings along western edges. Plant disced fire line to rye.</p>										

**TRAVERSE CITY FOREST MGT UNIT**

**Proposed Treatments  
With NO Limiting Factors**

**Compartment: 150**    **Entry Year: 2011**

Stand	Cover Type	Acres	Age	Site Index	Mgt Obj	Condition	Method Cut	Harvest Priority	Cultural Need	FDF Status
<b>26</b>	<b>A5</b>	9	53	47	aspen (upland)	mature	delayed removal	1		
comnts Fmd : Fairly heavy aspen regeneration.										
Wld : No cutting north of 2 track and leave all oaks for mast production.										
<b>30</b>	<b>J6</b>	6	62	50	aspen (upland)	mature	final harvest	1	natural regeneration	
Wld : Mixed JP, RP, A. Possibly leave RP and A, cut only JP?? Leave dead snags standing as much as possible.										
<b>34</b>	<b>U2</b>	13			upland brush	nonstocked		0	opening maintenance	
Wld : Sharptail mgt.area. Stagger burns in this compartment. Plant disced fire line to rye.										
<b>400</b>	<b>G0</b>	53			grass	nonstocked		0	opening maintenance	
Wld : Sharptail mgt. Area. Grass planted in 1993.										
<b>401</b>	<b>G0</b>	34			grass	nonstocked		0	opening maintenance	
Wld : Sharptail mgt. Area. Grass planted in 1993. Establish seed sources of native herbaceous plantings along western edges.										
<b>402</b>	<b>G0</b>	292			grass	nonstocked		0	opening maintenance	
comnts Fmd : 2009 - DAH - Burned spring 09. 98% U type killed. This stand has scattered oak sawlogs in areas.										
Wld : Sharptail mgt. Area. Scatter burns in this compartment. Establish seed sources of native herbaceous plantings along western edges. Plant disced fire line to rye.										
<b>403</b>	<b>G0</b>	102			grass	nonstocked		0	opening maintenance	
comnts Fmd : 2009 - DAH - Burned spring 09. 98% U type killed. This stand has scattered oak sawlogs in areas.										
Wld : Sharptail mgt. Area. Scatter burns in this compartment. Establish seed sources of native herbaceous plantings along western edges. Plant disced fire line to rye.										
<b>Total Acres.....</b>		<b>1530</b>								

**Proposed Treatments  
With Limiting Factors**

**Compartment: 150**

**Entry Year: 2011**

---

<b>Stand</b>	<b>Cover Type</b>	<b>Acres</b>	<b>Age</b>	<b>Site Index</b>	<b>Mgt Obj</b>	<b>Condition</b>	<b>Method Cut</b>	<b>Harvest Priority</b>	<b>Cultural Need</b>	<b>FD Status</b>
--------------	-----------------------	--------------	------------	-----------------------	--------------------	------------------	-----------------------	-----------------------------	--------------------------	----------------------

---

TREATMENT LIMITING FACTORS:

---

**Total Acres..... 0**

84°56'0"W

84°55'0"W

84°54'0"W

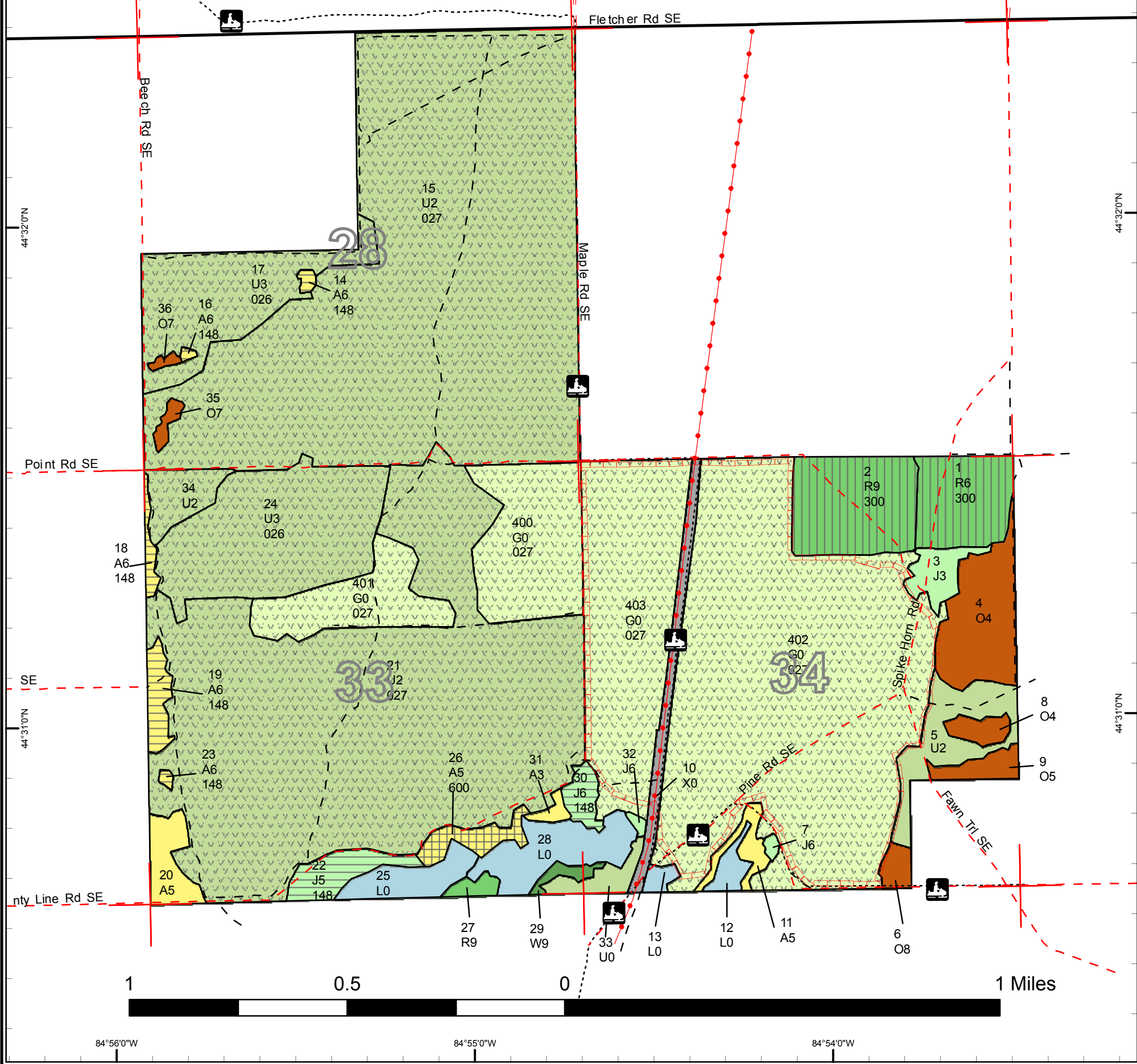
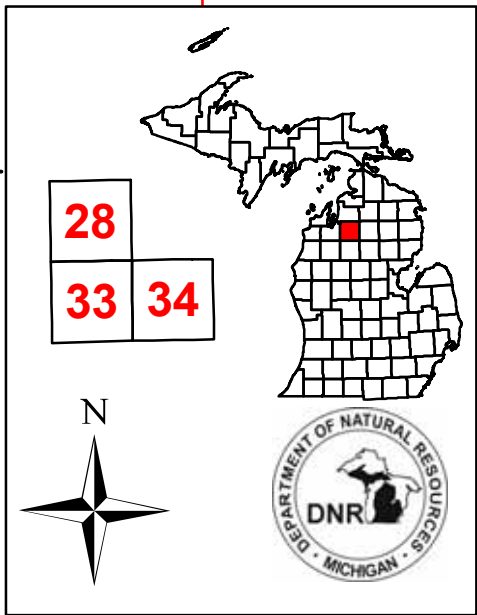
# Covertypes & Treatment Map

Compartment 150  
 T25N, R05W, Sec. 28, 33, 34  
 County: Kalkaska  
 Unit: Traverse City  
 YOE: 2011  
 Acres: 1,712 GIS Calculated  
 Stand Examiner: Donna Hagan  
 Map Revised: 9/11/2009  
 Map Phase: Pre-review

## Legend

- Miris Corners
- Paved Roads
- - County Gravel Roads
- - County Poor Dirt Roads
- - Poor Dirt Roads
- Pipelines
- ▭ Fire Lanes
- ⋯ Trails
- ☼ Snowmobile Trails
- ▭ Stand Boundary
- ▭ 026 - Opening Maintenance
- ▭ 027 - Opening Maintenance/Prescribed Burning
- ▭ 148 - Final Harvest/Natural Regeneration/Other
- ▭ 300 - Shelterwood - Seed
- ▭ 600 - Removal

- A - Aspen
- G - Grass
- J - Jack Pine
- L - Lowland Brush
- O - Oak
- R - Red Pine
- U - Upland Brush
- W - White Pine
- X - Non-Stocked

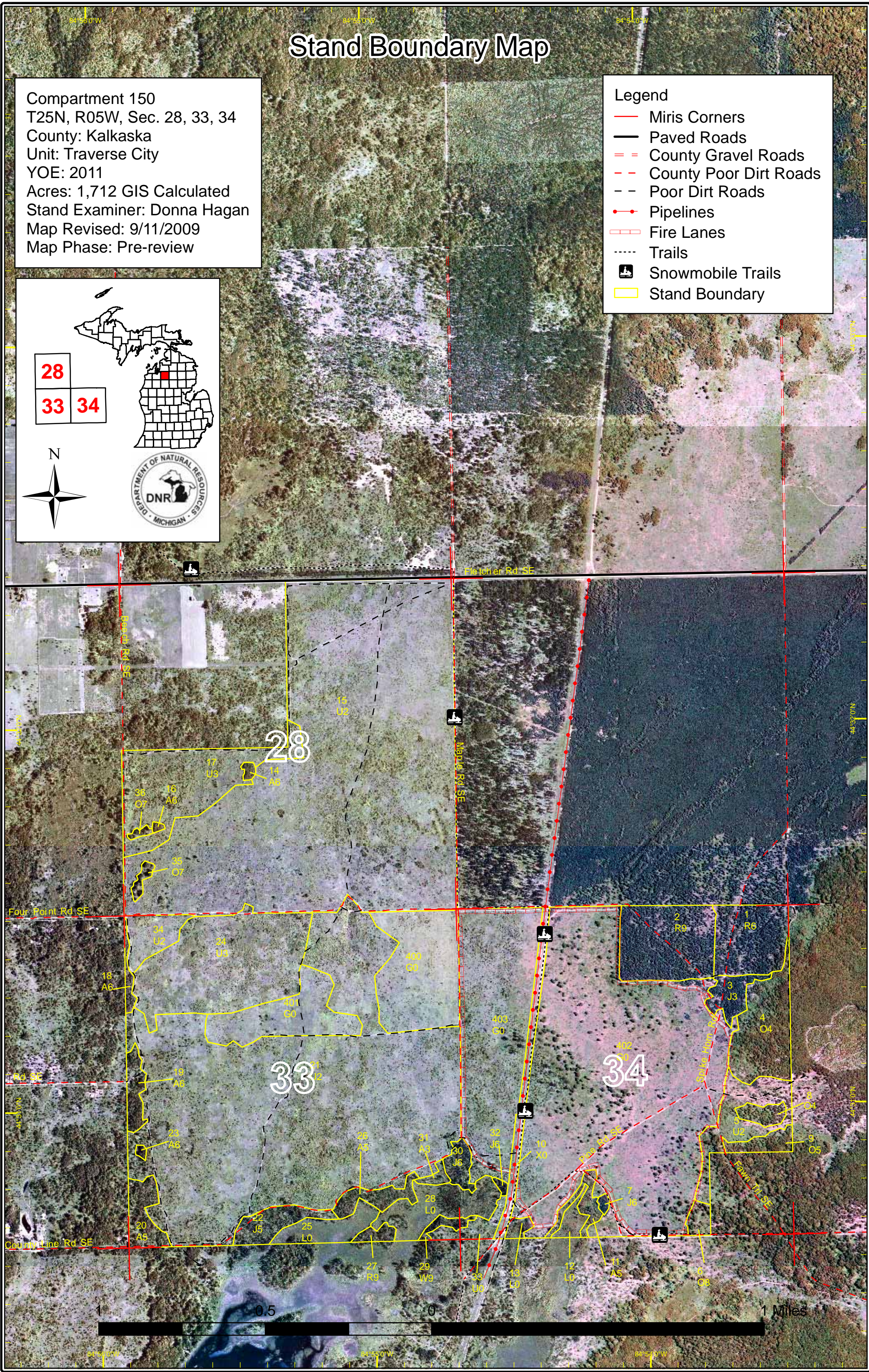
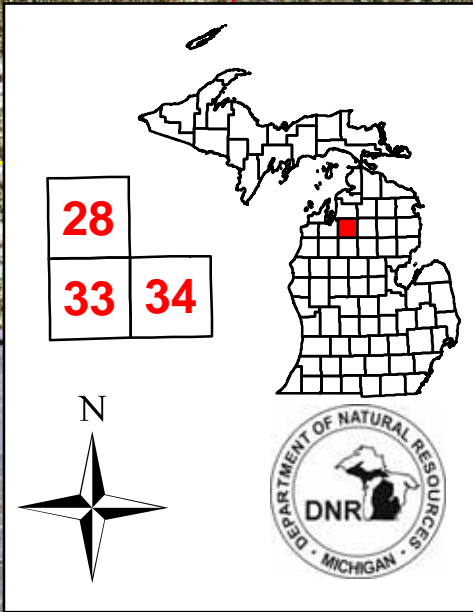


# Stand Boundary Map

Compartment 150  
 T25N, R05W, Sec. 28, 33, 34  
 County: Kalkaska  
 Unit: Traverse City  
 YOE: 2011  
 Acres: 1,712 GIS Calculated  
 Stand Examiner: Donna Hagan  
 Map Revised: 9/11/2009  
 Map Phase: Pre-review

## Legend

-  Miris Corners
-  Paved Roads
-  County Gravel Roads
-  County Poor Dirt Roads
-  Poor Dirt Roads
-  Pipelines
-  Fire Lanes
-  Trails
-  Snowmobile Trails
-  Stand Boundary

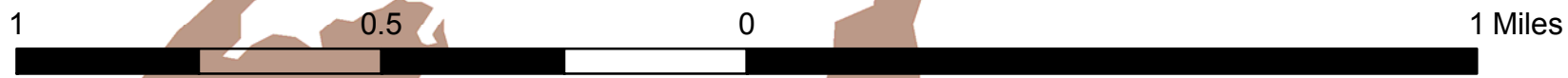
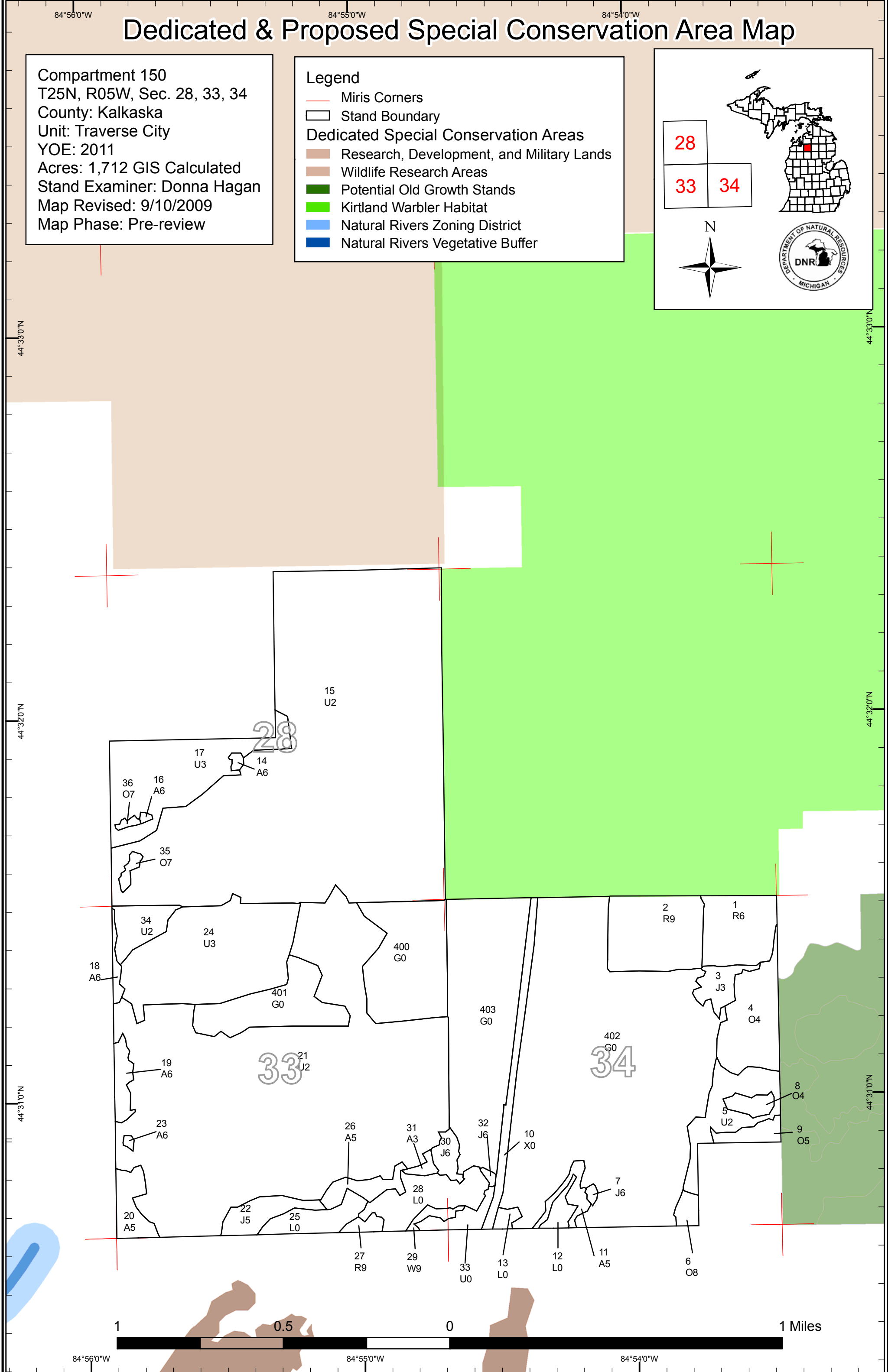
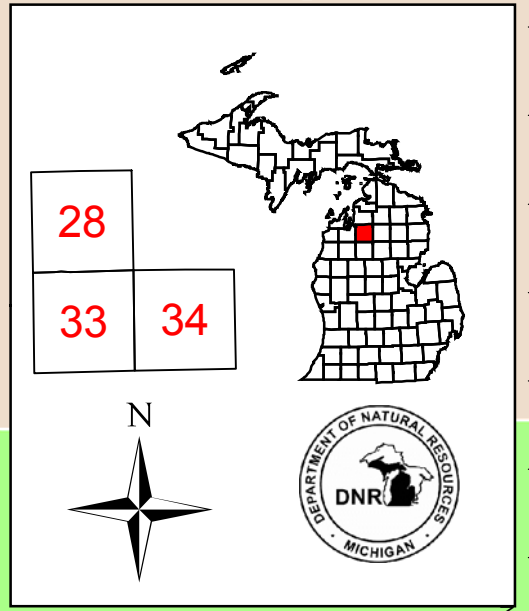


# Dedicated & Proposed Special Conservation Area Map

Compartment 150  
 T25N, R05W, Sec. 28, 33, 34  
 County: Kalkaska  
 Unit: Traverse City  
 YOE: 2011  
 Acres: 1,712 GIS Calculated  
 Stand Examiner: Donna Hagan  
 Map Revised: 9/10/2009  
 Map Phase: Pre-review

## Legend

- Miris Corners
- Stand Boundary
- Research, Development, and Military Lands
- Wildlife Research Areas
- Potential Old Growth Stands
- Kirtland Warbler Habitat
- Natural Rivers Zoning District
- Natural Rivers Vegetative Buffer



84°56'0"W      84°55'0"W      84°54'0"W

44°33'0"N

44°33'0"N

44°32'0"N

44°32'0"N

44°31'0"N

44°31'0"N



## DEDICATED CONSERVATION AREA DETAILS

\* This is a list of Dedicated Biodiversity Areas for this compartment along with a 1/4 mile buffer surrounding the compartment. Refer to Dedicated Conservation Area Map for areas that the below listed Conservation Areas are located.

ERA = Ecological Reference Area  
HCVA = High Conservation Value Area  
SCA = Special Conservation Area

Conservation Area	Type	Description
HCVA	Designated Critical Habitat	Critical habitat areas are established via a consultative and cooperative process between the DNR and the U.S. Fish and Wildlife service for the recovery of threatened and endangered species, as governed by Part 365, Endangered Species Protection, of the Natural Resources and Environmental Protection Act, 1994 PA 451, and the Federal Endangered Species Act of 1973. This is an active program, with proposed species plans in various stages of review. As of now only two exist, Kirtland Warbler Habitat and Piping Plover Habitat.
HCVA	Natural Rivers	There are two Natural Rivers datasets which are derived from spatial buffers set from an established and approved distance from the river centerlines. The Natural Rivers Zoning District is a 400 foot buffer for most Natural Rivers. The Vegetative Buffer ranges from 25 to 100 feet. To view specific Zoning Districts and Vegetative Buffers for each Natural River see the table located on the I:\Documentation\GDSE data folder.
SCA	Archaeological Site	An aquatic or terrestrial area of the State that contains physical remains of human occupation. These are sites of cultural and historical significance that may occur upon terrestrial areas and Great Lakes bottomlands. They include thousands of Native American settlements and burial sites, as well as French and British outposts, nineteenth century logging camps, mines and homesteads. Beneath the waters of the Great Lakes, there are shipwrecks and other remains documenting the maritime trade. Such sites may be identified by Natural heritage data from the State Historic Preservation Office. Proposed treatments in this compartment will be implemented in such a manner as to maintain the integrity of these sites. Due to the sensitive nature of this information, no further detail about location is available.
SCA	Habitat Area	An area that provide some specific need for the life cycle of wildlife species, including State Wildlife Areas and Waterfowl Production Areas, deer wintering complexes in lowland conifer communities, grassland openings and savannas. Habitat areas are distinct from critical habitat designated for recovery of endangered or threatened species (such as Kirtland's warbler or piping plover areas) in that they are more general in nature, are not primarily associated with threatened or endangered species, and are not covered by species recovery plans that are developed in cooperation with Federal agencies.
SCA	Potential Old Growth Areas	This category contains stands were identified for a broad range of reasons and were coded in the OI database as stand condition 8 as potential old growth (POG). Approximately 310,000 acres have been identified through the Operations Inventory (OI)/Compartment Review process. For stands in Year of Entry 2008 and forward, potential old growth is managed for the identified objective until it is: 1) vetted through the Biodiversity Conservation Planning Process (BCPP) and given a specific designation and objective (as an ERA, HCVA, or other type of SCA) and is released from the potential old growth designation; or 2) it is released from the potential old growth designation via the Compartment Review process.
SCA	Research and Military Areas	These areas provide facilities and lands specifically dedicated for research, or other purposes. They include the 5,847 acre Forest Fire Experiment Station, the 12,000 acre Houghton Lake Wildlife Research Area, the Beaver Islands Archipelago Wildlife Research Area (that includes most of Garden Island, all of High and Hog Islands, all state owned land on Beaver, South Fox and North Fox Islands), the Cusino Wildlife Research Area, the 3,000 acre Hunt Creek Fisheries Research Station, the 125 acre Wyman Nursery, and over 144,000 acres of Military Lands.