



**TRAVERSE CITY FOREST MANAGEMENT UNIT
COMPARTMENT REVIEW PRESENTATION**

COMPARTMENT # 57 ENTRY YEAR: 2008

Compartment Acreage: 3397 County: Grand Traverse

Stand Examiner: Dave Johnson

Legal Description: T25N-R09W-Sections 27, 28, 29, 32, 33 & 34

Management Goals: Maintain multiple age class distribution in both Mixed Oak and Mixed Pine. Maintain good recreational opportunities.

Soil and Topography: Mostly Ribicaon with some Lupton Muck in and around low areas.

Ownership Patterns, Development, and Land Use in and Around the Compartment:
Scattered private parcels around U.S. 131 and M 113 corridor. Mix of state and private surrounding compartment- mostly residential. Light residential development is occurring

Unique, Natural Features (include only non-site specific and non-sensitive information):
Treed bogs and small pot-hole lakes occur

Archeological, Historical, and Cultural Features (include only non-site specific and non-sensitive information): Old Walton Cemetary -Sec 28

Special Management Designations or Considerations: Many recreational trails run through area. Use visual management to enhance recreational opportunities.

Watershed and Fisheries Considerations:

Wildlife Habitat Considerations: This compartment falls entirely on a flat, excessively well drained outwash plain (LTA 5111), which was historically prone to frequent burning and harbored mixed pine forests, barrens, and some components of oak, aspen, and hardwoods. This landscape should continue to be managed for a variety of successional stages of pine-oak-aspen forest and grass-shrub openings, with some mid to late successional forest in places. Several stands could be allowed to gradually succeed to mixed pine forest, while others should be set back through timber harvesting. Such harvesting should incorporate residual live trees (including mast producing species), snags, and some down logs to replicate within-stand habitat structure left after wildfires. Oak is a very important component of forests here and should be maintained or regenerated as much as possible. Pine plantations should incorporate tree species and structural diversity as much as possible.

Aspen communities are an important component of this fire prone early successional landscape. Currently, aspen stands are of limited representation within compartment 57. However, aspen can be found as a component of the mixed pine-deciduous stands here. Opportunities to maintain and expand the presence of aspen communities should be included in future management plans. These plans should take into account age class diversity in conjunction with location of aspen stands. One such treatment is scheduled for this entry period.

Prescribed burning will be used as a tool to restore and maintain some grasslands/savanna habitat in one area of this compartment. Other opening maintenance projects include planting of herbaceous vegetation and selective hand felling of encroachment.

Species associated with pine, oak and aspen mixed upland forests and openland habitats, such as badger, deer, wild turkey, scarlet tanager, hog-nosed snake, ruffed grouse, Cooper's hawk, red-backed salamander, and gray squirrel will benefit from management here.

Mineral Resource and Development Concerns and/or Restrictions: Surface sediments consist of glacial outwash sand and gravel and postglacial alluvium. The glacial drift thickness varies between 400 and 600 feet. Beneath the glacial drift are the Mississippian Coldwater Shale and Marshall Sandstone. The Marshall was used previously as a building stone. A gravel pit is located in Section 33 and there should be potential. The Compartment is located south of the prolific Niagaran reef trend. There are no leases in the Compartment currently. The Antrim Shale has not been developed in this area and may be too deep.

Vehicle Access: No new access needed and no closures

Survey Needs: None

Recreational Facilities and Opportunities: South spur of the Boardman Valley Snowmobile Trail runs north - south through compartment closely following the railroad north of Walton Pond. North Country Trail also runs north - south through compartment using old fire line roads and two-track trails. ORV trail runs through the south and western portion of compartment. Small game and deer hunting along with berry picking make up other uses.

Fire Protection: A majority of this compartment is within Zone 6 Dispatch. Initial Attack is Grand Traverse County Rural Fire Dept. Battalion 6-Fife Lake. Because of the distance from the Traverse City Field Office, the Manton DNR Office handles initial attack for DNR suppression. When Traverse City Units get on scene, they take over the fire. This compartment has heavy pine within it. There is potential for a large fire in this area, and there are only structures located within sections 33 and 34. Because of the many two tracks and trails in the compartment, there is a potential for a man caused fire in this compartment. There is not a history of numerous fires within this compartment.

Additional Compartment Information:

****** Cover Type details and proposed treatments are listed in the attached reports:**

- ◆ **Cover Type by Age Class**
- ◆ **Proposed Treatments – No Limiting Factors**
- ◆ **Proposed Treatments – With Limiting Factors**

****** The following information is displayed on the attached compartment maps:**

Base feature information, stand numbers, cover types

Proposed treatments

Proposed road access system

Suggested potential old growth



Stage 1 Acres Summary By Level 3 Cover Type By Age

Compartment: 61057

Date: 11/1/2006

	0	1-9	10-19	20-29	30-39	40-49	50-59	60-69	70-79	80-89	>89	Uneven Age	Grand Total
Aspen Types	0	0	21.5	0	0	0	0	0	0	0	0	0	21.5
Emergent Wetland	86.7	0	0	0	0	0	0	0	0	0	0	0	86.7
Herbaceous Openland	41.8	0	0	0	0	0	0	0	0	0	0	0	41.8
Low-Density Trees	11.4	0	0	0	0	0	0	0	0	0	0	0	11.4
Lowland Shrub	24.3	0	0	0	0	0	0	0	0	0	0	0	24.3
Natural Pines	0	21.8	0	0	134.5	0	5.2	41.8	152.2	17.8	55	0	428.3
Oak Types	0	189.5	28.4	0	0	0	0	0	24.5	246.4	1088	34.9	1611.7
Planted Pines	0	3.3	0	2.4	0	0	5.4	227	537.8	127.6	16.6	0	920.1
Road/Parking Lot	60.8	0	0	0	0	0	0	0	0	0	0	0	60.8
Upland Mixed Forest	0	0	134.7	0	0	0	18.6	0	0	0	0	0	153.3
Upland Shrub	4	0	0	0	0	0	0	0	0	0	0	0	4
Water	33	0	0	0	0	0	0	0	0	0	0	0	33
Grand Total	262	214.6	184.6	2.4	134.5	0	29.2	268.8	714.5	391.8	1159.6	34.9	3396.9

**PROPOSED TREATMENTS
NO LIMITING FACTORS**

S
t
a
n
d

Treatment Name	Acres	Stage1 CovType	Size Density	1st Age	2nd Age	Treatment Method	Treatment Purpose	Cover Type Objective	Pg. 1
70 5614_island	5.8	White, Black, N. Pin Oak	8	81	0	Non-Forest Management	Opening Maintenance		

Rev
Cmnt:

Rev AOI is portion of stand 70 in SW NW Sec. 27 and southeast of the RR grade. This area is very open and could be converted in a herbaceous non-forested stand. Some stump removal would be needed. Regeneration is much lighter here than in the rest of the stand. Would work around pole and log sized oak/red pine/ and cherry. Try to keep field out of view from RR grade. Maybe block road along the east edge of this AOI.
Spec

Next
Steps:

3 61057003-Cut	24.2	Planted Red Pine	6	67	0	Crown Thinning	Intermediate Cut	Planted Red Pine	
-----------------------	------	------------------	---	----	---	----------------	------------------	------------------	--

Rev
Cmnt:

Rev Second thinning on stand

Spec

Next
Steps:

7 61057007-burn-Burn	36.6	Red with White Oak	9	93	0	Prescribed Burn	Ecosystem Maintenance		
-----------------------------	------	--------------------	---	----	---	-----------------	-----------------------	--	--

Rev
Cmnt:

Rev Suggest a prescription of an oak understory burn on a portion of stand 7, specifically the part between NF stand 1 and the AOI, 61057007-opening1.
Spec There is an old logging road that could be used as the SW boundary of the oak understory burn. Goal would be to create oak savana type setting between the 2 adjacent non-forested stands.

Next
Steps:

7 61057007-east opening-NonFor	1.0	Red with White Oak	9	93	0	Non-Forest Management	Opening Maintenance		
---------------------------------------	-----	--------------------	---	----	---	-----------------------	---------------------	--	--

Rev
Cmnt:

Rev This AOI is a small forest opening. Would like to maintain and slightly enlarge opening by cutting back encroaching hardwoods, mainly red maple.
Spec Could then leave as is for blueberry production and/or augment herbaceous component with some native grasses.

Next
Steps:

7 61057007-NF409-Burn	23.7	Red with White Oak	9	93	0	Prescribed Burn	Ecosystem Maintenance		
------------------------------	------	--------------------	---	----	---	-----------------	-----------------------	--	--

Rev
Cmnt:

Rev This AOI was delineated as an opening during the last entry period. NF IFMAP data has been collected for it this entry period. This stand/AOI needs some saw work to push back encroachment and then should be burned with neighboring AOI's with corresponding burn prescriptions.
Spec

Next
Steps:

**PROPOSED TREATMENTS
NO LIMITING FACTORS**

S
t
a
n
d

Treatment Name	Acres	Stage1 CovType	Size Density	1st Age	2nd Age	Treatment Method	Treatment Purpose	Cover Type Objective	Pg. 2
9 61057009-NF-NonFor	1.0	Red with White Oak	5	90	0	Non-Forest Management	Opening Maintenance		

Rev
Cmnt:

Rev This is a small natural forest opening that needs some saw work to set back encroachment. Could burn this opening and/or seed in a native grass spp to increase herbaceous diversity. NF IFMAP data has been collected for this AOI.
Spec

Next
Steps:

11 61057011-Cut	5.4	Planted Jack Pine	6	52	0	Clearcut	Regeneration	Planted Jack Pine	
-----------------	-----	-------------------	---	----	---	----------	--------------	-------------------	--

Rev
Cmnt:

Rev Final Harvest
Spec

Next Regen survey
Steps:

16 61057016-Cut	15.7	White, Black, N. Pin Oak	6	101	0	Single Tree Selection	Regeneration	White, Black, N. Pin Oak	
-----------------	------	--------------------------	---	-----	---	-----------------------	--------------	--------------------------	--

Rev
Cmnt:

Rev Create regen gaps - reduce ba to 50-60 ft. reduce larger poor quality pin oak
Spec

Next white oak, pin oak and red maple is anticipated as regen
Steps:

19 61057019-Cut	22.0	Red Oak	9	97	0	Single Tree Selection	Regeneration	Oak, Pine	
-----------------	------	---------	---	----	---	-----------------------	--------------	-----------	--

Rev
Cmnt:

Rev Create regen gaps - reduce ba to 60 ft., favoring quality red oak
Spec

Next Red Oak, White Oak, Red Maple and White Pine is anticipated in regen gaps
Steps:

21 61057021-Cut	13.6	Red Oak	9	97	0	Single Tree Selection	Regeneration	Red Oak	
-----------------	------	---------	---	----	---	-----------------------	--------------	---------	--

Rev
Cmnt:

Rev reduce stand ba to 60 ft. creating large canopy gaps. Remove larger dbh trees (18" +)
Spec

Next red oak, red maple and white oak are desired species for regen.
Steps:

26 61057026-NF-NonFor_small	2.6	Mixed Oak	2	8	0	Non-Forest Management	Opening Maintenance		
-----------------------------	-----	-----------	---	---	---	-----------------------	---------------------	--	--

Rev
Cmnt:

Rev Focus on NE portion of stand 26 where regen in thin and nice herbaceous growth already exists. Could hydroaxe and grub out stumps and burn and then see what natural herbaceous regrowth occurs. Could then supplement with a native grass such as Canada wild rye or similar.
Spec

Next
Steps:

**PROPOSED TREATMENTS
NO LIMITING FACTORS**

S
t
a
n
d

Treatment Name	Acres	Stage1 CovType	Size Density	1st Age	2nd Age	Treatment Method	Treatment Purpose	Cover Type Objective	Pg. 3
32 61057032-Cut	13.1	White, Black, N. Pin Oak	8	97	0	Shelterwood	Regeneration	White, Black, N. Pin Oak	

Rev
Cmnt:

Rev Shelterwood cut leaving approx 20 sq. ft. of higher quality white and pine oak with a few scattered red pine
Spec

Next white, pin and a few red pine should regenerate area
Steps:

39 61057039-NF_small-NonFor	3.4	Pine, Oak Mix	2	17	0	Non-Forest Management	Opening Maintenance		
------------------------------------	-----	---------------	---	----	---	-----------------------	---------------------	--	--

Rev
Cmnt:

Rev Opening at the south end of this stand needs some saw work to set back woody encroachment. Selectively hand fell woody encroachment to maintain upland brush/grassland community. Leave scattered mast producing trees and shrubs and/or conifers for wildlife food and cover.
Spec

Next
Steps:

40 61057040-Cut	8.3	Planted Red Pine	6	77	0	Single Tree Selection	Regeneration	Oak, Pine	
------------------------	-----	------------------	---	----	---	-----------------------	--------------	-----------	--

Rev
Cmnt:

Rev selection thinning reducing ba of red pine to approx. 50 sq. ft. to encourage quality oak pine regen.
Spec

Next red pine and red, white and pin oak should regenerate after harvest.
Steps:

46 61057046-Cut	17.8	Planted Jack Pine, Mixed Deciduous	6	80	0	Clearcut with Reserves	Regeneration	Planted Jack Pine, Mixed Deciduous	
------------------------	------	------------------------------------	---	----	---	------------------------	--------------	------------------------------------	--

Rev
Cmnt:

Rev final harvest on jack pine leaving scattered oak
Spec

Next regen survey - area has shown a good natural regen after final harvests, if not plant to jp.
Steps:

49 61057049-Cut	138.4	White, Black, N. Pin Oak	6	103	0	Group Selection	Regeneration	Oak, Pine	
------------------------	-------	--------------------------	---	-----	---	-----------------	--------------	-----------	--

Rev
Cmnt:

Rev Remove all jack Pine and Red Maple.
Spec

Next Oak understory is established - jp removal will release and promote more oak regen.
Steps:

56 61057056-Cut	40.6	White, Black, N. Pin Oak	9	103	0	Single Tree Selection	Regeneration	Oak, Pine	
------------------------	------	--------------------------	---	-----	---	-----------------------	--------------	-----------	--

Rev
Cmnt:

Rev reduce ba to approx 60 ft. removing larger mature and over mature oak and pine.
Spec

Next white , pin oak and white pine are anticipated regen species.
Steps:

**PROPOSED TREATMENTS
NO LIMITING FACTORS**

S
t
a
n
d

Treatment Name	Acres	Stage1 CovType	Size Density	1st Age	2nd Age	Treatment Method	Treatment Purpose	Cover Type Objective	Pg. 4
62 61057062-Cut1	74.0	Planted Jack Pine, Mixed Deciduous	6	80	0	Clearcut with Reserves	Regeneration	Planted Jack Pine, Mixed Deciduous	

Rev
Cmnt:

Rev final harvest of jp leaving scattered oak and white pine
Spec

Next regen survey - area has shown good natural regen of jp when clearcut. If not replant to jp
Steps:

63 61057063-Cut	13.9	Natural Mixed Pine	9	87	0	Single Tree Selection	Regeneration	Natural Mixed Pine	
------------------------	------	--------------------	---	----	---	-----------------------	--------------	--------------------	--

Rev
Cmnt:

Rev reduce ba to 50 sq. ft. by removing larger mature to over-mature red and white pine (20+dbh) and lower quality scattered mixed oak
Spec

Next mixed pine and mixed oak are anticipated regeneration.
Steps:

65 61057065-Cut	61.1	Oak, Pine	6	90	0	Group Selection	Regeneration	Oak, Pine	
------------------------	------	-----------	---	----	---	-----------------	--------------	-----------	--

Rev
Cmnt:

Rev remove all jp and red maple.
Spec

Next oak understory already present - jp removal will release this and encourage new oak regen.
Steps:

66 61057066-Cut	35.8	White, Black, N. Pin Oak	9	106	0	Single Tree Selection	Regeneration	Mixed Oak	
------------------------	------	--------------------------	---	-----	---	-----------------------	--------------	-----------	--

Rev
Cmnt:

Rev reduce ba to approx 60 sq.ft. creating regen gaps- concentrate on removing overmature oak and poor form. (18+dbh)
Spec

Next mixed oak and white pine are anticipated regen.
Steps:

70 61057070-Oil well pad_island-NonFor	2.0	White, Black, N. Pin Oak	8	81	0	Non-Forest Management	Opening Maintenance		
---	-----	--------------------------	---	----	---	-----------------------	---------------------	--	--

Rev
Cmnt:

Rev Degraded site. Old oil well pad. Revegetate to a low maintenance herbaceous vegetation suitable for wildlife forage or cover. Soil will most likely need considerable reconditioning.
Spec

Next
Steps:

73 61057073-Cut	23.8	Oak, Pine	9	106	0	Group Selection	Salvage	Oak, Pine	
------------------------	------	-----------	---	-----	---	-----------------	---------	-----------	--

Rev
Cmnt:

Rev Remove all jp and scattered aspen
Spec

Next oak regen already present and anticipate some scattered aspen after harvest. Some white pine also
Steps:

**PROPOSED TREATMENTS
NO LIMITING FACTORS**

S
t
a
n
d

Treatment Name	Acres	Stage1 CovType	Size Density	1st Age	2nd Age	Treatment Method	Treatment Purpose	Cover Type Objective	Pg. 5
75 61057075-Cut	9.2	Planted Red Pine, Mixed Deciduous	6	70	0	Crown Thinning	Intermediate Cut	Planted Red Pine, Mixed Deciduous	

Rev
Cmnt:

Rev row thin remove approx 1/3 ba, may have to remove some scattered oak to aid in row removal of rp
Spec

Next
Steps:

82 61057082-Cut	21.2	Oak, Pine	9	97	0	Single Tree Selection	Regeneration	Oak, Pine	
------------------------	------	-----------	---	----	---	-----------------------	--------------	-----------	--

Rev
Cmnt:

Rev remove jp and poor form and mature pin oak reducing ba to approx. 50 sq.ft.
Spec

Next mixed oak regen already present - should release and promote new oak regen.
Steps:

87 61057087-Cut	18.6	Mixed Upland Forest	9	59	0	Single Tree Selection	Regeneration	Mixed Upland Forest	
------------------------	------	---------------------	---	----	---	-----------------------	--------------	---------------------	--

Rev
Cmnt:

Rev reduce ba to approx 60 sq.ft. - removing jp and mature mixed oak and poor form mixed pine
Spec

Next mixed oak regen is anticipated.
Steps:

88 61057088-Cut	16.6	Planted Red Pine	9	95	0	Single Tree Selection	Regeneration	Planted Red Pine, Mixed Deciduous	
------------------------	------	------------------	---	----	---	-----------------------	--------------	-----------------------------------	--

Rev
Cmnt:

Rev reduce ba to 60 sq.ft. concentrate on removing larger diameter and poor form rp
Spec

Next regen wil consist of white, red pine and mixed oak.
Steps:

91 61057091-Cut	42.5	Planted Jack Pine, Mixed Deciduous	6	78	0	Group Selection	Salvage	Mixed Upland Deciduous with Conifer	
------------------------	------	------------------------------------	---	----	---	-----------------	---------	-------------------------------------	--

Rev
Cmnt:

Rev remove all jp - leave oaks, white and red pine.
Spec

Next Area should convert to mixed upland species with a scattering of jp seedling/saplings
Steps:

92 61057092-Cut	152.3	Pine, Oak	5	73	0	Group Selection	Salvage	Pine, Oak	
------------------------	-------	-----------	---	----	---	-----------------	---------	-----------	--

Rev
Cmnt:

Rev remove all jp and red maple.
Spec

WLD 11/30/06 - Could also include aspen in species to harvest in order to potentially expand aspen component.

Next mixed oak, aspen, red maple, white and red pine should make up the regen specie. a good mix is presnt already, jp removal should enhance growth and spur new regen.
Steps:

**PROPOSED TREATMENTS
NO LIMITING FACTORS**

S
t
a
n
d

Treatment Name	Acres	Stage1 CovType	Size Density	1st Age	2nd Age	Treatment Method	Treatment Purpose	Cover Type Objective	Pg. 6
1 NF_61057001-Burn	37.3	Herbaceous Openland	0	0	0	Prescribed Burn	Ecosystem Maintenance		

Rev
Cmnt:

Rev Some ORV damage in the E. end, old cycle trail. Burn would need a good N wind to carry fire across areas of sparse fuels. Several old tires. E end is a bowl depression.
Spec

Next Periodic burning during 10 year rotation cycle.
Steps:

6 NF_61057006-NonFor	4.0	Herbaceous Openland	0	0	0	Non-Forest Management	Opening Maintenance		
----------------------	-----	---------------------	---	---	---	-----------------------	---------------------	--	--

Rev
Cmnt:

Rev Selectively hand fell woody encroachment to maintain upland brush/grassland community. Leave scattered mast producing trees and shrubs and/or conifers for wildlife food and cover.
Spec

Next
Steps:

10 NF_61057010-NonFor	4.5	Herbaceous Openland	0	0	0	Non-Forest Management	Opening Maintenance		
-----------------------	-----	---------------------	---	---	---	-----------------------	---------------------	--	--

Rev
Cmnt:

Rev Stand is in a shallow ravine. Encroachment from surrounding forest types & resent selection cut. Set back encroachment- burn would be ideal yet fuels are sparse. Use brush hog & some saw work. Extend delineation of opening to include NE & NW fingers. Include a seeding of warm or cool season native vegetation.
Spec

Next
Steps:

12 NF_61057012-NonFor	11.4	Herbaceous Openland	0	0	0	Non-Forest Management	Opening Maintenance		
-----------------------	------	---------------------	---	---	---	-----------------------	---------------------	--	--

Rev
Cmnt:

Rev Islands of white pine/ black cherry/ oak w/ sap- logs. makes nice cover islands esecially from Walton Rd. Leave northern most islands to screen opening from Walton Rd. Otherwise: Selectively hand fell woody encroachment to maintain upland brush/grassland community. Leave scattered mast producing trees and shrubs and/or conifers for wildlife food and cover.
Spec

Next
Steps:

68 NF_61057068-NonFor	44.4	Water	0	0	0	Non-Forest Management	Habitat Management		
-----------------------	------	-------	---	---	---	-----------------------	--------------------	--	--

Rev
Cmnt:

Rev Series of old dikes from cranberry farm. Waterfowl management opportunities, wild rice and/or nest boxes. Will need to coordinate with Fisheries Div regarding wild rice planting.
Spec

Next
Steps:

**Total Treatment
Acreage Proposed: 946.0**

**PROPOSED TREATMENTS
WITH LIMITING FACTORS**

S
t
a
n
d

Treatment Name	Acres	Stage1 CovType	Size Density	1st Age	2nd Age	Treatment Method	Treatment Purpose	Cover Type Objective	Pg. 1
74 61057074- aspen- Cut_small	20.7	White, Black, N. Pin Oak	9	97	0	Clearcut with Reserves	Habitat Management	Aspen, Oak	

Limiting Factor 4C: Low volume (stocking/diameter)

and Comment: Limiting factor applies only to uncut portion of AOI.

Rev
Cmnt:

Rev Cut to regenerate and expand aspen. Cut all species to a 2" DBH limit, except marked hardwoods for residuals. Residuals can be a combination of
Spec: individual trees and clumps. Create CWD during harvest operations (up to 1-2 logs for every 2 acres cut). Protect any fruiting shrubs.

Next Treatment area should regenerate well to aspen suckers and some hardwood stump sprouts. Cherry, oak, and maple regen is acceptable and
Steps: desirable.

**Total Treatment
Acreage Proposed: 20.7**

Compartment 57
 T25N, R9W, Sec. 27, 28, 29, 32, 33, 34
 County: Grand Traverse
 Unit: Traverse City
 YOE: 2008
 Acres: 3,397 GIS Calculated
 Stand Examiner: Dave Johnson
 Map Revised: 12/11/2006
 Map Phase: Pre-review

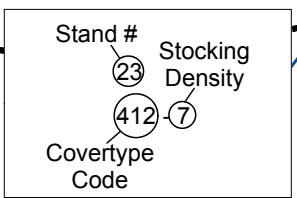
Field Map

29 28 27
 32 33 34

N

Stocking Density	Definition
1	Sapling low
2	Sapling medium
3	Sapling well
4	Pole timber low
5	Pole timber medium
6	Pole timber well
7	Saw timber low
8	Saw timber medium
9	Saw timber well

Multi-part Stands:
 Stand 16, 2 parts, split by stand 17
 Stand 24, 2 parts, split by stand 23
 Stand 66, 2 parts, split by stand 60
 Stand 72, 2 parts, split by stand 71



Legend

- Miris Corners
- Highways
- Paved Roads
- Gravel Roads
- Poor Dirt Roads
- Railroads
- Intermittent Stream/Drain
- Stream
- Lakes and Rivers
- Stands

Treatments

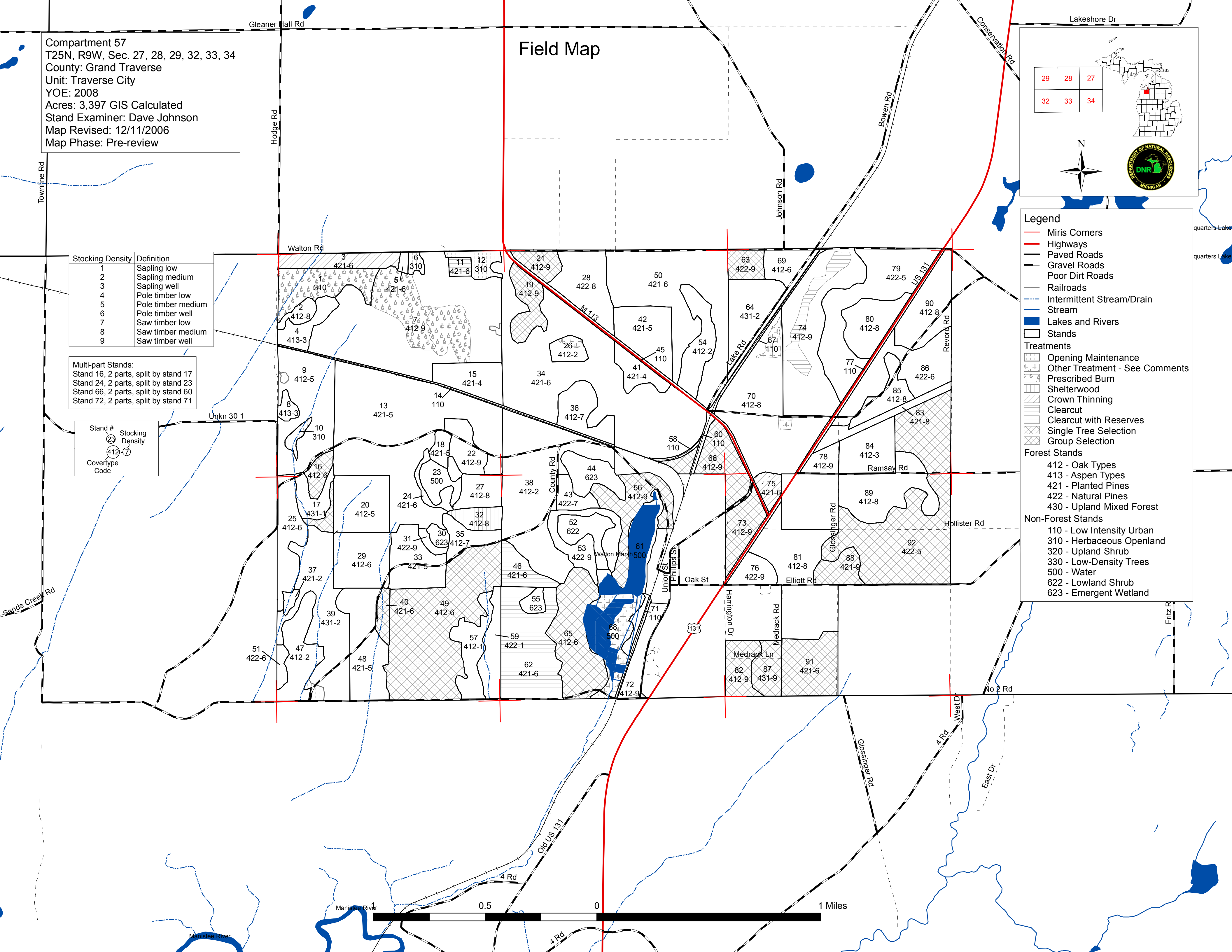
- Opening Maintenance
- Other Treatment - See Comments
- Prescribed Burn
- Shelterwood
- Crown Thinning
- Clearcut
- Clearcut with Reserves
- Single Tree Selection
- Group Selection

Forest Stands

- 412 - Oak Types
- 413 - Aspen Types
- 421 - Planted Pines
- 422 - Natural Pines
- 430 - Upland Mixed Forest

Non-Forest Stands

- 110 - Low Intensity Urban
- 310 - Herbaceous Openland
- 320 - Upland Shrub
- 330 - Low-Density Trees
- 500 - Water
- 622 - Lowland Shrub
- 623 - Emergent Wetland



Compartment 57
 T25N, R9W, Sec. 27, 28, 29, 32, 33, 34
 County: Grand Traverse
 Unit: Traverse City
 YOY: 2008
 Acres: 3,397 GIS Calculated
 Stand Examiner: Dave Johnson
 Map Revised: 12/11/2006
 Map Phase: Pre-review

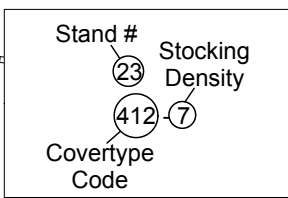
Cover Type

29 28 27
 32 33 34

N

Stocking Density	Definition
1	Sapling low
2	Sapling medium
3	Sapling well
4	Pole timber low
5	Pole timber medium
6	Pole timber well
7	Saw timber low
8	Saw timber medium
9	Saw timber well

Multi-part Stands:
 Stand 16, 2 parts, split by stand 17
 Stand 24, 2 parts, split by stand 23
 Stand 66, 2 parts, split by stand 60
 Stand 72, 2 parts, split by stand 71



Legend

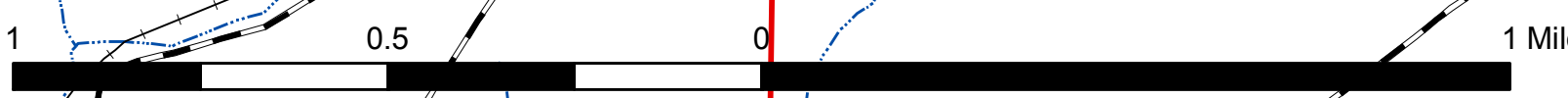
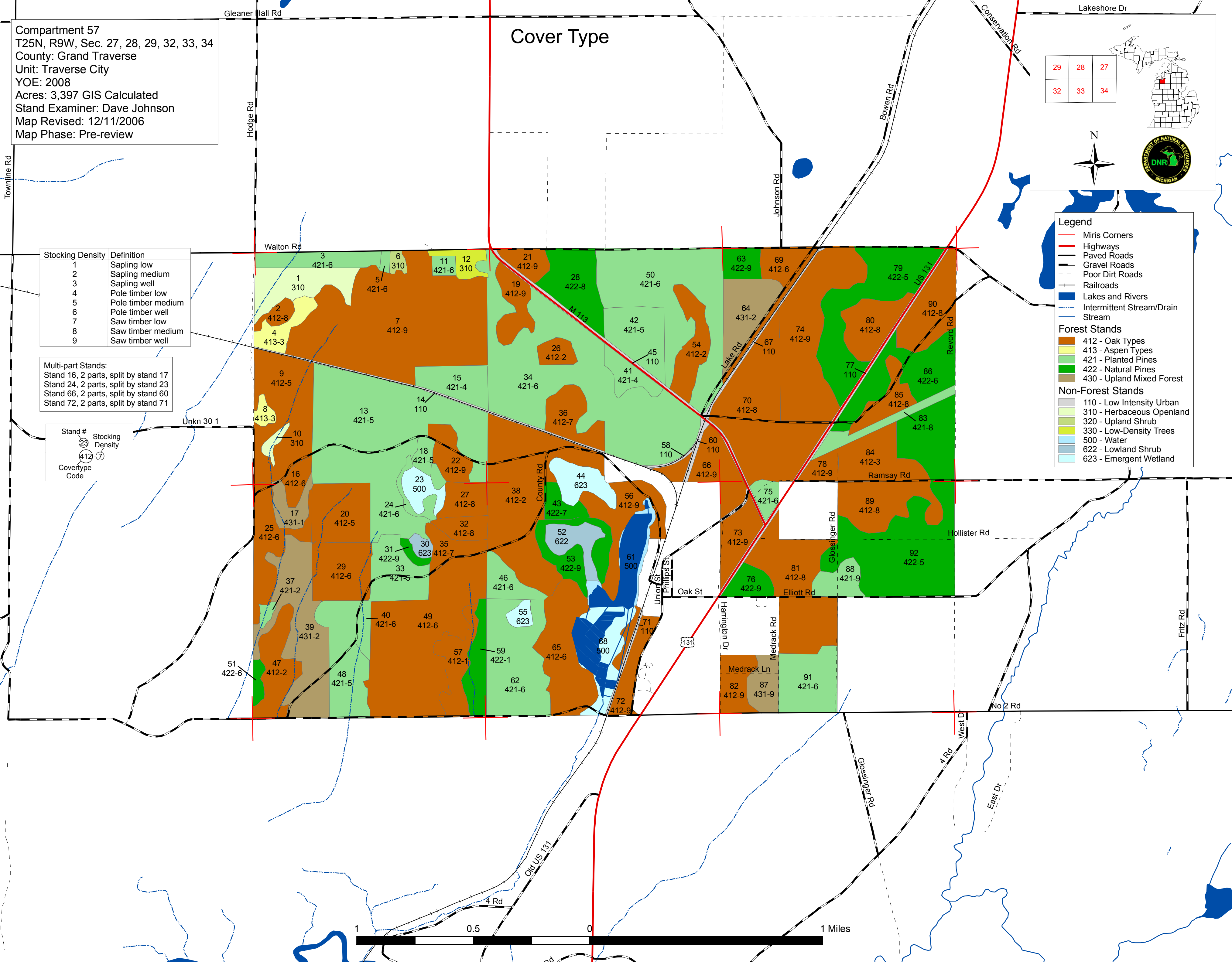
- Miris Corners
- Highways
- Paved Roads
- Gravel Roads
- Poor Dirt Roads
- Railroads
- Lakes and Rivers
- Intermittent Stream/Drain
- Stream

Forest Stands

- 412 - Oak Types
- 413 - Aspen Types
- 421 - Planted Pines
- 422 - Natural Pines
- 430 - Upland Mixed Forest

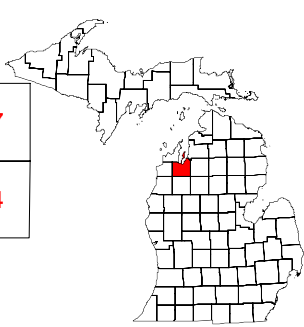
Non-Forest Stands

- 110 - Low Intensity Urban
- 310 - Herbaceous Openland
- 320 - Upland Shrub
- 330 - Low-Density Trees
- 500 - Water
- 622 - Lowland Shrub
- 623 - Emergent Wetland



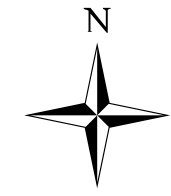

Compartment 57
 T25N, R9W, Sec. 27, 28, 29, 32, 33, 34
 County: Grand Traverse
 Unit: Traverse City
 YOY: 2008
 Acres: 3,397 GIS Calculated
 Stand Examiner: Dave Johnson
 Map Revised: 12/11/2006
 Map Phase: Pre-review

Treatment



29	28	27
32	33	34

N

Stocking Density	Definition
1	Sapling low
2	Sapling medium
3	Sapling well
4	Pole timber low
5	Pole timber medium
6	Pole timber well
7	Saw timber low
8	Saw timber medium
9	Saw timber well

Multi-part Stands:
 Stand 16, 2 parts, split by stand 17
 Stand 24, 2 parts, split by stand 23
 Stand 66, 2 parts, split by stand 60
 Stand 72, 2 parts, split by stand 71

Stand #	Stocking Density
23	7
412	7

Covertypes
 Code

Legend

- Miris Corners
- Highways
- Paved Roads
- Gravel Roads
- Poor Dirt Roads
- Railroads
- Intermittent Stream/Drain
- Stream
- Stands

Treatments

- Clearcut
- Clearcut with Reserves
- Crown Thinning
- Single Tree Selection
- Group Selection
- Shelterwood
- Prescribed Burn
- Opening Maintenance
- Other Treatment - See Comments

Forest Stands

- 412 - Oak Types
- 413 - Aspen Types
- 421 - Planted Pines
- 422 - Natural Pines
- 430 - Upland Mixed Forest

Non-Forest Stands

- 110 - Low Intensity Urban
- 310 - Herbaceous Openland
- 320 - Upland Shrub
- 330 - Low-Density Trees
- 500 - Water
- 622 - Lowland Shrub
- 623 - Emergent Wetland

