



**SHINGLETON FOREST MANAGEMENT UNIT  
COMPARTMENT REVIEW PRESENTATION**

**COMPARTMENT # 130      ENTRY YEAR: 2011**

**Compartment Acreage: 1826**

**County: Schoolcraft**

---

**Revision Date: 10/22/09**

**Stand Examiner:** Jennifer Burnham

**Legal Description:** T47N R14W Sections 19, 29-33

**RMU (if applicable):**

**Management Goals:** The main goal in this compartment is to conduct multiple resource management for current and future generations.

**Soil and Topography:** The topography in this compartment is mostly flat to rolling. The compartment lies within the Seney Drainage Land Type Association.

**Ownership Patterns, Development, and Land Use in and Around the Compartment:** The compartment is all State land with State land surrounding all sides.

**Unique, Natural Features (include only non-site specific and non-sensitive information):** Currently under review by Michigan Natural Features Inventory (MNFI).

**Archeological, Historical, and Cultural Features (include only non-site specific and non-sensitive information):** None known.

**Special Management Designations or Considerations:** The Little Fox River is a natural and scenic waterway; aesthetics and water quality are major concerns. The Little Fox River is a High Conservation Value Area.

**Watershed and Fisheries Considerations:** The Fox River is found in this compartment and is a designated Natural River. The Fox River supports excellent natural reproduction of brook trout and provides excellent nursery habitat for young fish and provides habitat for large, adult fish. BMP's should be implemented to control sediment sources from adjacent uplands. Fine sediments such as silt and sand negatively affect natural reproduction of fish, decrease the diversity of aquatic invertebrate and fish taxa, and result in lower overall fish populations.

**Wildlife Habitat Considerations:** Located on the west side of the Fox River Road, this compartment is part of a large outwash plain that historically contained red and white pine. Turn of the century logging and slash fires destroyed the organic soils, resulting in a large opening complex that supported species such as sharp-tailed grouse, bluebirds, and kestrels. Subsequent plantation work and natural healing of the ecosystem has resulted in the reforestation of most of this compartment. Jack pine is the dominant tree species. Stands have undergone rotational harvests, providing variation in age classes across the landscape. Some openings also remain. This compartment borders marsh with pine ridges to the southwest. Wildlife goals for this

compartment include maintaining structural diversity within the pine system as well as maintaining wildlife travel corridors and protecting marsh areas. Species benefitting from such management include wolf, black bear, American marten, sandhill crane, and black-backed woodpecker.

**Mineral Resource and Development Concerns and/or Restrictions:** Surface sediments consist of lacustrine (lake) sand and gravel, glacial outwash sand & gravel and postglacial alluvium and peat & muck. There is insufficient data to determine the glacial drift thickness. The Ordovician Black River Group subcrops below the glacial drift. The Black River is quarried for dolostone in the UP. Gravel pits are not found in the area and potential appears to be limited. There is no commercial oil and gas production in the UP.

**Vehicle Access:** The Fox River Road runs along the east side of the compartment. A good two-track system exists for timber sales.

**Survey Needs:** None.

**Recreational Facilities and Opportunities:** The Fox River Pathway and snowmobile trail come together in the compartment to cross the Little Fox River at the Wagner Taylor Dam bridge. The Fox River campground is only 2.5 miles south of the compartment, and both the Fox and Little Fox Rivers provide excellent fishing opportunities.

**Fire Protection:** Fire response to the area will be good with the Seney Field Office close by and the good access to the area. However, the main timber type in the area is jack pine.

**Additional Compartment Information:**

- **The following 5 reports from the Operations Inventory System (OIPC) are attached:**
  - ◆ **Cover Type by Age Class**
  - ◆ **Cover Type by Management Objective**
  - ◆ **Compartment Volume Summary**
  - ◆ **Proposed Treatments – No Limiting Factors**
  - ◆ **Proposed Treatments – With Limiting Factors**
  
- **The following information is displayed, where pertinent, on the attached compartment maps:**
  - ◆ **Base feature information, stand numbers, cover types**
  - ◆ **Proposed treatments**
  - ◆ **Proposed road access system**
  - ◆ **Suggested potential old growth**

11/2/2009 11:53:17 AM

Michigan Department of Natural Resources - Operations Inventory System  
Individual Compartment Report

LAKE SUPERIOR STATE FOREST

SHINGLETON FOREST MGT UNIT

SCHOOLCRAFT COUNTY

COMPARTMENT: 130

Table 3

(acres shown in boxes)

STAND AGE CLASS

COVER TYPE	Not Coded	STAND AGE CLASS																All Aged	Total	
		0-9	10-19	20-29	30-39	40-49	50-59	60-69	70-79	80-89	90-99	100-109	110-119	120-129	130-139	140-149	150-159			
Black Spruce				13															13	
Grass		200																		200
Jack Pine		123	430	348				105	69										266	1341
Lowlnd Brush	8																			8
Marsh	77																			77
Non Stocked	12																			12
Red Pine							82												85	167
White Pine																			27	27
<b>Total</b>	<b>97</b>	<b>323</b>	<b>430</b>	<b>361</b>			<b>82</b>	<b>105</b>	<b>69</b>										<b>378</b>	<b>1826</b>

11/2/2009 11:53:20 AM

Michigan Department of Natural Resources - Operations Inventory System  
Individual Compartment Report

LAKE SUPERIOR STATE FOREST

SHINGLETON FOREST MGT UNIT

SCHOOLCRAFT COUNTY

COMPARTMENT: 130

Table 3A

(acres shown in boxes)

MANAGEMENT OBJECTIVE TYPE

COVER TYPE	A	S	V	C	G	H	J	I	L	P	N	Q	X	O	B	R	K	Y	F	E	T	D	U	M	Z	W	Total
S Black Spruce		13																									13
G Grass					200																						200
J Jack Pine							1341																				1341
L LowInd Brush									8																		8
N Marsh											77																77
X Non Stocked													12														12
R Red Pine																167											167
W White Pine																										27	27
<b>Total</b>		13			200		1341		8		77		12			167										27	1826

LAKE SUPERIOR STATE FOREST

SHINGLETON FOREST MGT UNIT

SCHOOLCRAFT COUNTY

COMPARTMENT: **130**

*Table 10 - COMPARTMENT VOLUME SUMMARY - ALL STANDS*

COMPARTMENT SUMMARY			
TOTAL VOLUME		CUT VOLUME	
Hardwood	328 Cds	Softwood	1339 Cds
Softwood	7689 Cds	Sum CutVol	1339 Cds
Softwood	399 Mbf		
Sum TotVol	8815 Cds		
<b>Total Cmpnt Acres</b>		Acres Proposed For Cut.....	69
	1826		

## SHINGLETON FOREST MGT UNIT

Proposed Treatments  
With NO Limiting Factors

Compartment: 130 Entry Year: 2011

Stand	Cover Type	Acres	Age	Site Index	Mgt Obj	Condition	Method Cut	Harvest Priority	Cultural Need	FDf Status
34	J6	52	72	50	jack pine	immature	final harvest	2	natural regeneration	
comnts Fmd : LABRADOR TEA AND SPHAGNUM MOSS FOR GROUND COVER. REGENERATION COULD BE A PROBLEM. Cut with stand 41149040 in Cmp 149 adjacent to the west - scheduled/factor limited for treatment in YOE 2010. Regeneration of jack pine with other conifer species acceptable. Wld : Minimize impacts to the ground surface near marshy areas on the western end of the stand or in the adjacent compartment 149 stand 40 that will be scheduled with this stand to maintain hydrology and habitat.										
37	J6	17	72	50	jack pine	immature	final harvest	2	natural regeneration	
comnts Fmd : LABRADOR TEA AND SPHAGNUM MOSS FOR GROUND COVER. REGENERATION COULD BE A PROBLEM. Regeneration of jack pine with other conifer species acceptable.										
39	J3	4	1	50	jack pine	in process of regeneration		0	other - specify in remarks	
comnts Fmd : [4/4/03] This stand is under contract TS #032-01 Big 450 Switch. Also see FTP #C41-1043 (conversion to jack pine). [4/5/05] Cutting is complete and the sale is closed. [5/3/08 jb] Jack pine planted 1083t/a. Needs regen check again in 2009.										
40	J3	8	1	50	jack pine	in process of regeneration		0	other - specify in remarks	
comnts Fmd : HCVA - Fox River Management Plan. Stand contains about 1 acre within the buffer area. [4/4/03] This stand is under contract TS #032-01 Big 450 Switch. Also see FTP #C41-1043 (conversion to jack pine). [4/5/05] Cutting is complete and the sale is closed. [5/3/08 jb] Jack pine planted 1083t/a. Regen check needed in 2009										
42	J3	5	1	50	jack pine	old growth (potential or actual)		0	other - specify in remarks	
comnts Fmd : HCVA- Fox River Management Plan. Not all of the acreage is within the buffer area. [4/4/03] This stand is under contract TS #032-01 Big 450 Switch. Also see FTP #C41-1043 (conversion to jack pine). [4/5/05] Cutting is complete and the sale is closed. [5/3/08 jb] Jack pine planted 1083t/a. Needs a regeneration check in 2009, Residual trees were left (red pine, white pine, white birch, especially near the pathway and snowmobile trail. Some oak and 1 stick jack pine are present.										
49	J3	9	1	50	jack pine	in process of regeneration		0	other - specify in remarks	
comnts Fmd : [4/4/03] This stand is under contract TS #032-01 Big 450 Switch. Also see FTP #C41-1043 (conversion to jack pine). [4/5/05] Cutting is complete and the sale is closed. [5/3/08 jb] Jack pine planted 1083t/a. Needs regeneration check in 2009. Trees that are there look healthy. Some residual rp, wp, jp, oak were left.										
Total Acres.....		95								

**Proposed Treatments  
With Limiting Factors**

**Compartment: 130**

**Entry Year: 2011**

---

<b>Stand</b>	<b>Cover Type</b>	<b>Acres</b>	<b>Age</b>	<b>Site Index</b>	<b>Mgt Obj</b>	<b>Condition</b>	<b>Method Cut</b>	<b>Harvest Priority</b>	<b>Cultural Need</b>	<b>FD Status</b>
--------------	-----------------------	--------------	------------	-----------------------	--------------------	------------------	-----------------------	-----------------------------	--------------------------	----------------------

---

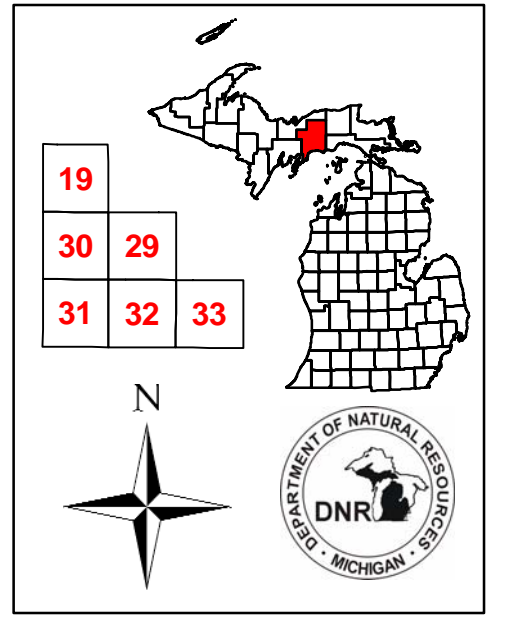
TREATMENT LIMITING FACTORS:

---

**Total Acres..... 0**

Compartment: 130  
 T47N, R14W, Sec. 19, 29, 30  
 31, 32, 33  
 County: Schoolcraft  
 Unit: Shingleton  
 YOE: 2011  
 Acres: 1,826 GIS Calculated  
 Stand Examiner: Jennifer Burnham  
 Map Revised: 10/29/2009  
 Map Phase: Pre-Review

# Covertype & Treatment Map

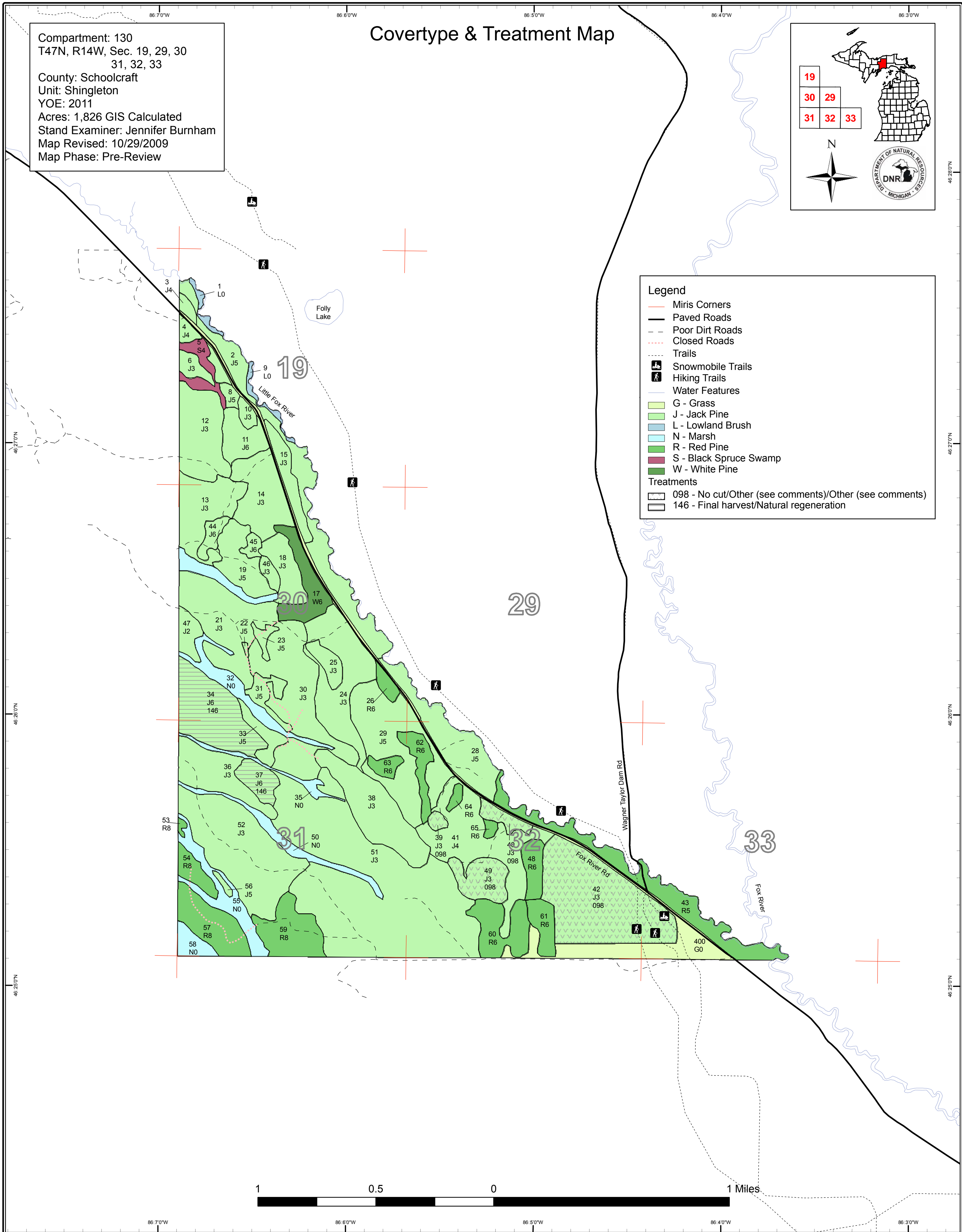


**Legend**

- Miris Corners
- Paved Roads
- - - Poor Dirt Roads
- ⋯ Closed Roads
- ⋯ Trails
- ⊠ Snowmobile Trails
- ⊠ Hiking Trails
- Water Features
- G - Grass
- J - Jack Pine
- L - Lowland Brush
- N - Marsh
- R - Red Pine
- S - Black Spruce Swamp
- W - White Pine

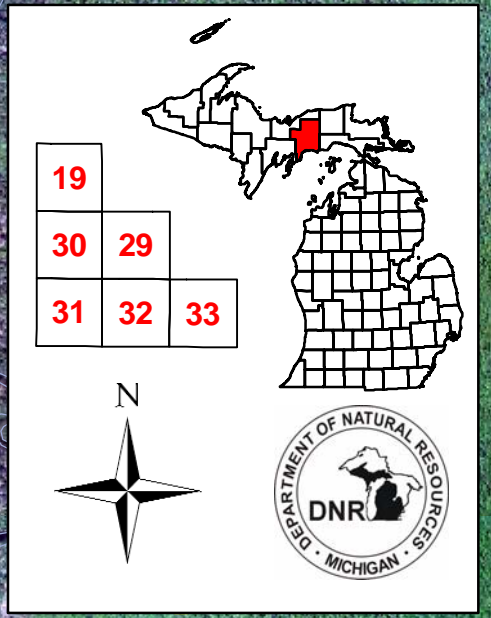
**Treatments**

- ▨ 098 - No cut/Other (see comments)/Other (see comments)
- ▨ 146 - Final harvest/Natural regeneration

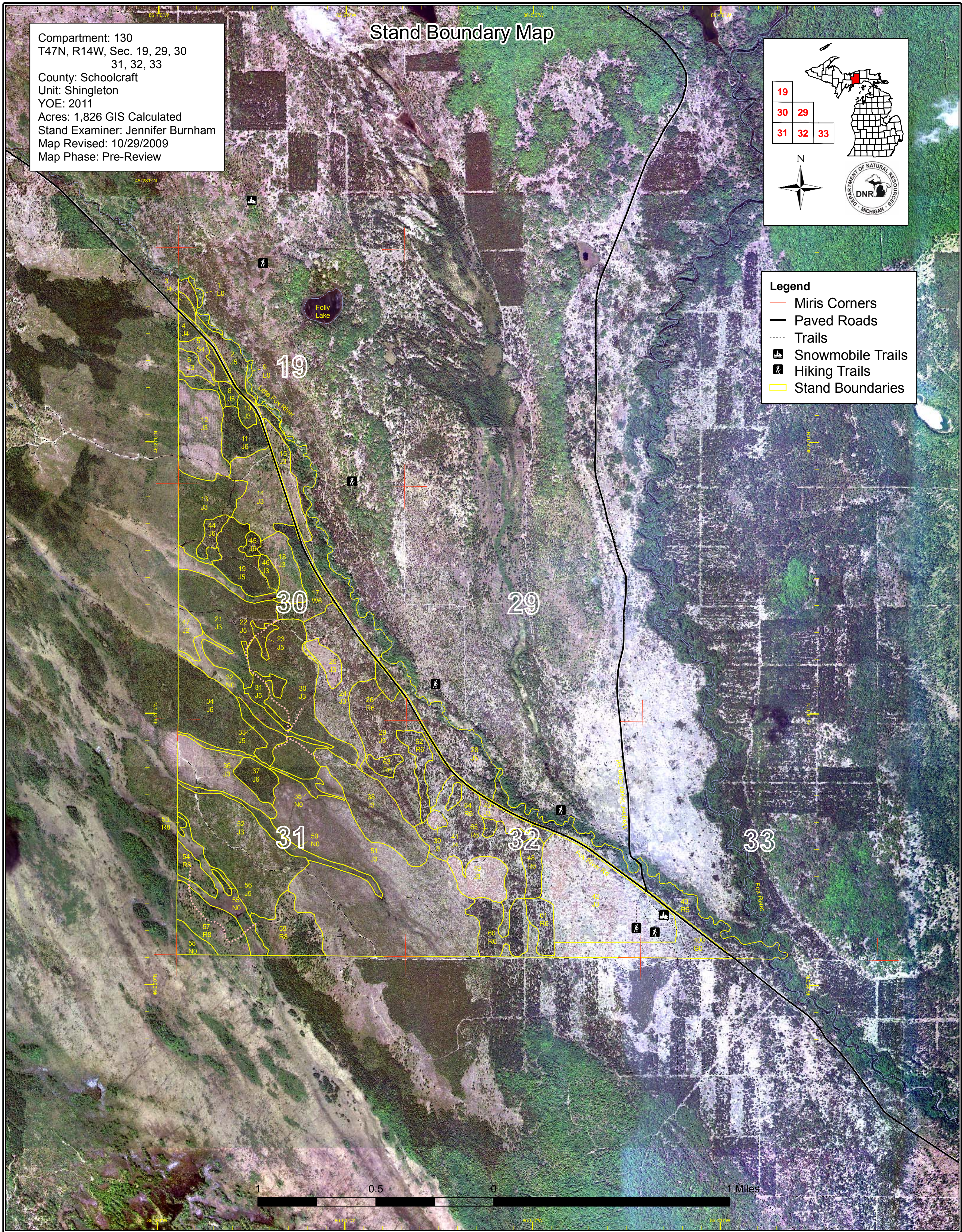


# Stand Boundary Map

Compartment: 130  
T47N, R14W, Sec. 19, 29, 30  
31, 32, 33  
County: Schoolcraft  
Unit: Shingleton  
YOE: 2011  
Acres: 1,826 GIS Calculated  
Stand Examiner: Jennifer Burnham  
Map Revised: 10/29/2009  
Map Phase: Pre-Review

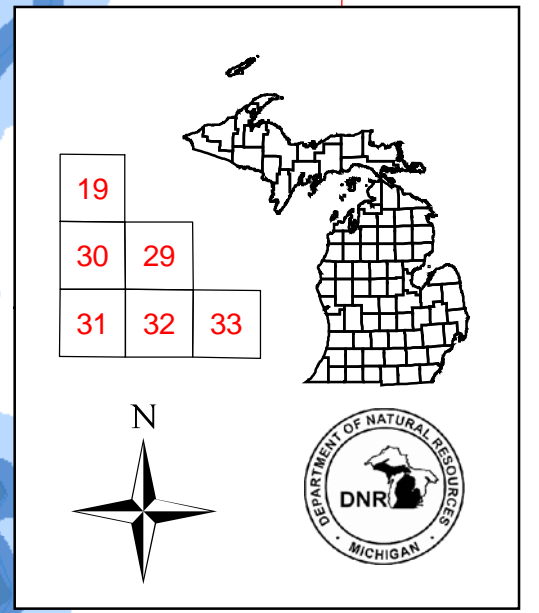


- Legend**
- Miris Corners
  - Paved Roads
  - Trails
  - Snowmobile Trails
  - Hiking Trails
  - Stand Boundaries



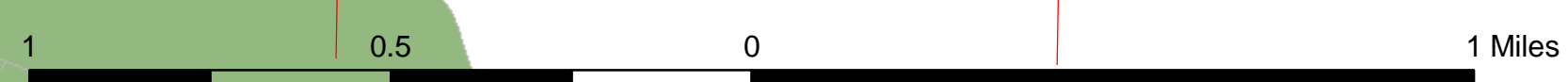
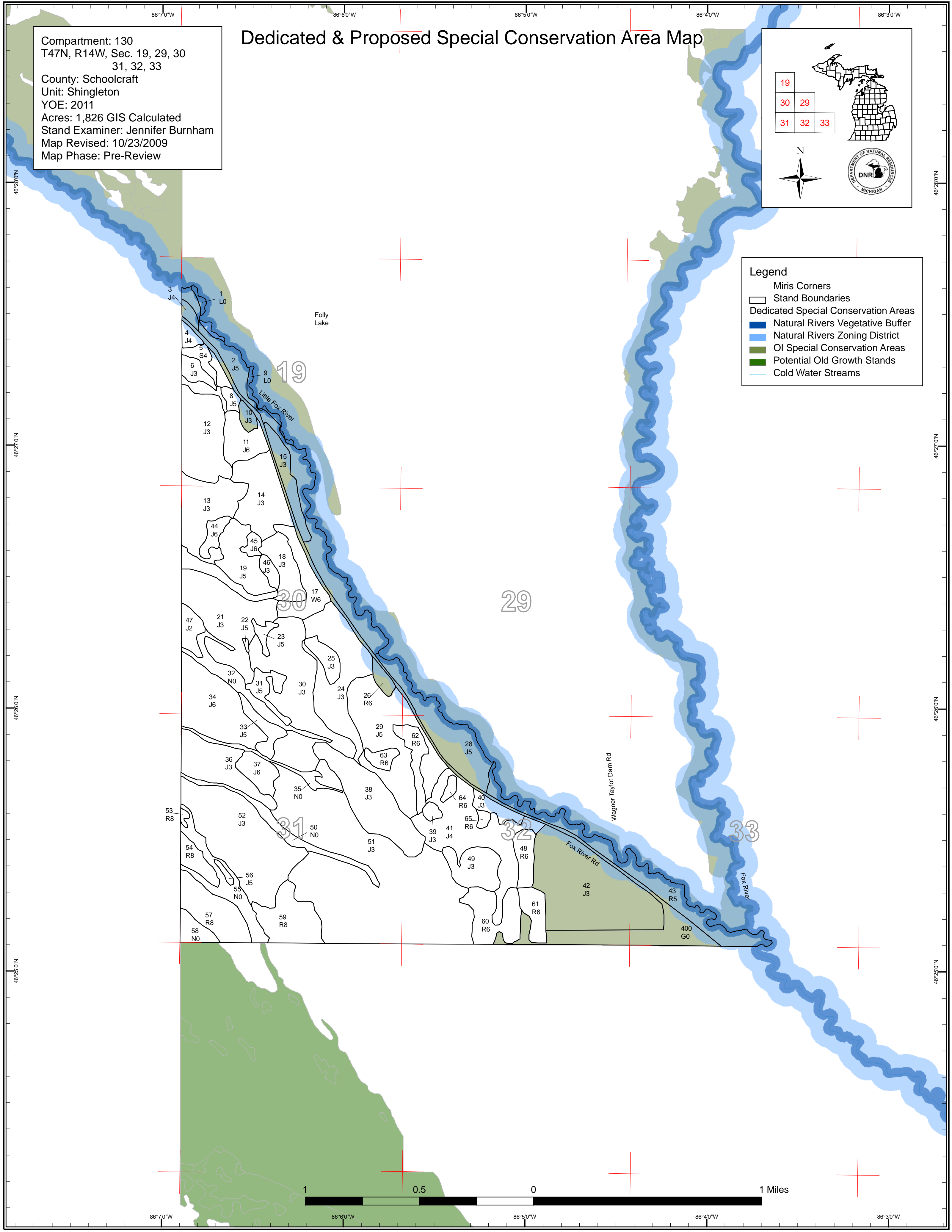
Compartment: 130  
 T47N, R14W, Sec. 19, 29, 30,  
 31, 32, 33  
 County: Schoolcraft  
 Unit: Shingleton  
 YOE: 2011  
 Acres: 1,826 GIS Calculated  
 Stand Examiner: Jennifer Burnham  
 Map Revised: 10/23/2009  
 Map Phase: Pre-Review

# Dedicated & Proposed Special Conservation Area Map



**Legend**

- Miris Corners
- Stand Boundaries
- Dedicated Special Conservation Areas**
- Natural Rivers Vegetative Buffer
- Natural Rivers Zoning District
- OI Special Conservation Areas
- Potential Old Growth Stands
- Cold Water Streams





**DEDICATED CONSERVATION AREA DETAILS**

\* This is a list of Dedicated Biodiversity Areas for this compartment along with a 1/4 mile buffer surrounding the compartment. Refer to Dedicated Conservation Area Map for areas that the below listed Conservation Areas are located.

ERA = Ecological Reference Area  
 HCVA = High Conservation Value Area  
 SCA = Special Conservation Area

Conservation Area	Type	Description
HCVA	Natural Rivers	There are two Natural Rivers datasets which are derived from spatial buffers set from an established and approved distance from the river centerlines. The Natural Rivers Zoning District is a 400 foot buffer for most Natural Rivers. The Vegetative Buffer ranges from 25 to 100 feet. To view specific Zoning Districts and Vegetative Buffers for each Natural River see the table located on the I:\Documentation\GDSE data folder.
SCA	Cold Water Stream	A coldwater stream has temperature and dissolved oxygen conditions that allow naturally-reproduced or stocked trout populations and those of other coldwater fish species (e.g., slimy sculpin) to persist from year to year. Coldwater streams in Michigan typically provide these conditions due to substantial contributions of groundwater to their stream flows. Such streams are established by Director's action and designated as trout resources by Fisheries Order 210.
SCA	Potential Old Growth Areas	This category contains stands were identified for a broad range of reasons and were coded in the OI database as stand condition 8 as potential old growth (POG). Approximately 310,000 acres have been identified through the Operations Inventory (OI)/Compartment Review process. For stands in Year of Entry 2008 and forward, potential old growth is managed for the identified objective until it is: 1) vetted through the Biodiversity Conservation Planning Process (BCPP) and given a specific designation and objective (as an ERA, HCVA, or other type of SCA) and is released from the potential old growth designation; or 2) it is released from the potential old growth designation via the Compartment Review process.



**DEDICATED CONSERVATION AREA DETAILS**

\* This is a list of Dedicated Biodiversity Areas for this compartment along with a 1/4 mile buffer surrounding the compartment. Refer to Dedicated Conservation Area Map for areas that the below listed Conservation Areas are located.

ERA = Ecological Reference Area  
 HCVA = High Conservation Value Area  
 SCA = Special Conservation Area

Conservation Area	Type	Description
HCVA	Natural Rivers	There are two Natural Rivers datasets which are derived from spatial buffers set from an established and approved distance from the river centerlines. The Natural Rivers Zoning District is a 400 foot buffer for most Natural Rivers. The Vegetative Buffer ranges from 25 to 100 feet. To view specific Zoning Districts and Vegetative Buffers for each Natural River see the table located on the I:\Documentation\GDSE data folder.
SCA	Cold Water Stream	A coldwater stream has temperature and dissolved oxygen conditions that allow naturally-reproduced or stocked trout populations and those of other coldwater fish species (e.g., slimy sculpin) to persist from year to year. Coldwater streams in Michigan typically provide these conditions due to substantial contributions of groundwater to their stream flows. Such streams are established by Director's action and designated as trout resources by Fisheries Order 210.
SCA	Potential Old Growth Areas	This category contains stands were identified for a broad range of reasons and were coded in the OI database as stand condition 8 as potential old growth (POG). Approximately 310,000 acres have been identified through the Operations Inventory (OI)/Compartment Review process. For stands in Year of Entry 2008 and forward, potential old growth is managed for the identified objective until it is: 1) vetted through the Biodiversity Conservation Planning Process (BCPP) and given a specific designation and objective (as an ERA, HCVA, or other type of SCA) and is released from the potential old growth designation; or 2) it is released from the potential old growth designation via the Compartment Review process.