



**SHINGLETON FOREST MANAGEMENT UNIT
COMPARTMENT REVIEW PRESENTATION**

COMPARTMENT # 55 ENTRY YEAR: 2011

Compartment Acreage: 1,262 County: Schoolcraft

Revision Date: 3/30/2009

Stand Examiner: Adam Petrelius

Legal Description: T43N R14W Sections 14, 15, 22

RMU (if applicable):

Management Goals: The main goal of this compartment is to conduct multiple resource management for current and future generations.

Soil and Topography: The topography within the compartment is mostly flat with slight elevation differences between the upland ridges and lowland conifer, marsh, and brush stands. Elevation values range between 636 and 663 feet. Most of the compartment is forested, but a few marshes separate some of the upland jack pine ridges. Numerous soil types are located in this compartment. A few of the most abundant soils are Proper Sand, Rousseau-Neconish-Finch, and Markey Mucky Peat. Habitat types within the compartment, in order of abundance, are Unclassified Lowland, PVE, PArV, and PArVAa. It lies within the Seney Manistique Swamp Management Area.

Ownership Patterns, Development, and Land Use in and Around the Compartment: State land within this compartment was acquired between 1906 and 1951. The compartment boundary borders private, state, and corporate land. The northern boundary borders state land. The east and south boundaries border private land entirely. The western boundary borders state, corporate, and Manistique School owned land. A few camps are located adjacent to the boundaries.

Unique, Natural Features (include only non-site specific and non-sensitive information): None known.

Archeological, Historical, and Cultural Features (include only non-site specific and non-sensitive information): None known.

Special Management Designations or Considerations: A few stands along the Manistique River are designated as potential old growth.

Watershed and Fisheries Considerations: The Manistique River is classified as non-trout water. The fisheries community consists of walleye, smallmouth bass, northern pike, sunfish, yellow perch, sucker spp., and minnow spp. BMP's should be implemented to control sediment sources from adjacent uplands. Fine sediments such as silt and sand negatively affect natural reproduction of fish, decrease the diversity of aquatic invertebrate and fish taxa, and result in lower overall fish populations.

Wildlife Habitat Considerations: This compartment is located on the west side of the Manistique River about 2 miles south of the Seney National Wildlife Refuge. This compartment is comprised of a series of lowland drainages separated by jack pine dominated uplands. The western and northern parts contain more lowland marshes with pine ridges, while the eastern and southern sides have more upland pine habitat. Sections 14 and 22 each contain oxbows that have become isolated from the Manistique River. The oxbow in section 14 is contained within a larger hemlock stand while the oxbow in section 22 is contained within a northern hardwood stand. These are essentially the only two areas that are not forested by early successional species. Certain areas on the east side near the Manistique River have been identified as important parts of a wildlife corridor extending along the river, and are designated as potential old growth. The wildlife goals include maintaining the canopy associated with the hemlock stand, protecting the stream and riparian corridors, and promoting age and structural diversity within the pine types.

Mineral Resource and Development Concerns and/or Restrictions: Surface sediments consist of lacustrine (lake) sand and gravel. There is insufficient data to determine the glacial drift thickness. The Silurian Manitoulin Dolomite and Ordovician Queenston Shale subcrop below the glacial drift. The Manitoulin could be used for stone. Gravel pits are not located in the area, but there could be some potential. There is no commercial oil and gas production in the UP.

Vehicle Access: There is one main access point into the compartment, the Dougal Creek Road. This road travels through the compartment from the Highwater Truck Trail, and dead ends about 1 mile north of the compartment boundary at a private gate. A few portions of this road travel through private land, but the state owns an easement through these areas. An easement is also held on a spur road that travels northwest into the land owned by Manistique Area Schools. Additional forest roads break away from the Dougal Creek Road and travel to neighboring camps or recent timbersales.

Survey Needs: None needed.

Recreational Facilities and Opportunities: There are no recreational facilities within compartment boundaries. A snowmobile trail is located 1 mile southwest of the compartment, and access will require use of this trail. This compartment receives minimal use by the public with a large portion of the users consisting of neighboring camp owners. Opportunities for hunting, trapping and other forms of outdoor recreation exist.

Fire Protection: Response time to fires within this compartment will be slow. It is located approximately half way between the Thompson and Seney fire stations. Both spring and summer fires are likely to occur here. Drought conditions during the summer months combined with fuel types in the compartment give this area potential for a large wildfire. The Seney fire of 1976 burned portions of this compartment. Water sources are abundant and include the Manistique River, various small creeks, and beaver ponds.

Additional Compartment Information:

- **The following 5 reports from the Operations Inventory System (OIPC) are attached:**
 - ◆ **Cover Type by Age Class**
 - ◆ **Cover Type by Management Objective**
 - ◆ **Compartment Volume Summary**
 - ◆ **Proposed Treatments – No Limiting Factors**
 - ◆ **Proposed Treatments – With Limiting Factors**

- **The following information is displayed, where pertinent, on the attached compartment maps:**
 - ◆ **Base feature information, stand numbers, cover types**
 - ◆ **Proposed treatments**
 - ◆ **Proposed road access system**
 - ◆ **Suggested potential old growth**

11/2/2009 11:28:41 AM

Michigan Department of Natural Resources - Operations Inventory System
Individual Compartment Report

LAKE SUPERIOR STATE FOREST

SHINGLETON FOREST MGT UNIT

SCHOOLCRAFT COUNTY

COMPARTMENT: 55

Table 3

(acres shown in boxes)

STAND AGE CLASS

| COVER TYPE | Not Coded | 0-9 | 10-19 | 20-29 | 30-39 | 40-49 | 50-59 | 60-69 | 70-79 | 80-89 | 90-99 | 100-109 | 110-119 | 120-129 | 130-139 | 140-149 | 150-159 | All Aged | Total |
|--------------|------------|-----|------------|------------|------------|-------|-----------|------------|-----------|-----------|-------|---------|---------|---------|---------|---------|---------|-----------|-------------|
| Aspen | | | 24 | 20 | | | | | | | | | | | | | | | 44 |
| Black Spruce | | | | | 30 | | | 21 | | | | | | | | | | | 51 |
| Jack Pine | | | 120 | 64 | 403 | | 31 | | | 35 | | | | | | | | | 653 |
| Lowlnd Brush | 10 | | | | | | | | | | | | | | | | | | 10 |
| Marsh | 285 | | | | | | | | | | | | | | | | | | 285 |
| Mx Swmp Cnfr | | | | | | | | 49 | 36 | | | | | | | | | | 85 |
| Red Pine | | | | | | | | 35 | | 3 | | | | | | | | | 38 |
| Spruce Fir | | | | 27 | | | | | | | | | | | | | | | 27 |
| Treed Bog | 23 | | | | | | | | | | | | | | | | | | 23 |
| Upland Hdwds | | | | | | | | | | | | | | | | | | 29 | 29 |
| Water | 17 | | | | | | | | | | | | | | | | | | 17 |
| Total | 335 | | 144 | 111 | 433 | | 31 | 105 | 36 | 38 | | | | | | | | 29 | 1262 |

11/2/2009 11:28:44 AM

Michigan Department of Natural Resources - Operations Inventory System
Individual Compartment Report

LAKE SUPERIOR STATE FOREST

SHINGLETON FOREST MGT UNIT

SCHOOLCRAFT COUNTY

COMPARTMENT: 55

Table 3A

(acres shown in boxes)

MANAGEMENT OBJECTIVE TYPE

| COVER TYPE | A | S | V | C | G | H | J | I | L | P | N | Q | X | O | B | R | K | Y | F | E | T | D | U | M | Z | W | Total |
|----------------|----|----|---|---|---|---|-----|---|----|---|-----|----|---|---|---|----|---|---|----|---|---|----|---|----|----|------|-------|
| A Aspen | 44 | | | | | | | | | | | | | | | | | | | | | | | | | | 44 |
| S Black Spruce | | 51 | | | | | | | | | | | | | | | | | | | | | | | | | 51 |
| J Jack Pine | | | | | | | 653 | | | | | | | | | | | | | | | | | | | | 653 |
| L Lowlnd Brush | | | | | | | | | 10 | | | | | | | | | | | | | | | | | | 10 |
| N Marsh | | | | | | | | | | | 285 | | | | | | | | | | | | | | | | 285 |
| Q Mx Swmp Cnfr | | | | | | | | | | | | 85 | | | | | | | | | | | | | | | 85 |
| R Red Pine | | | | | | | | | | | | | | | | 38 | | | | | | | | | | | 38 |
| F Spruce Fir | | | | | | | | | | | | | | | | | | | 27 | | | | | | | | 27 |
| D Treed Bog | | | | | | | | | | | | | | | | | | | | | | 23 | | | | | 23 |
| M Upland Hdwds | | | | | | | | | | | | | | | | | | | | | | | | 29 | | | 29 |
| Z Water | | | | | | | | | | | | | | | | | | | | | | | | | 17 | | 17 |
| Total | 44 | 51 | | | | | 653 | | 10 | | 285 | 85 | | | | 38 | | | 27 | | | 23 | | 29 | 17 | 1262 | |

LAKE SUPERIOR STATE FOREST

SHINGLETON FOREST MGT UNIT

SCHOOLCRAFT COUNTY

COMPARTMENT: **55**

Table 10 - COMPARTMENT VOLUME SUMMARY - ALL STANDS

| COMPARTMENT SUMMARY | | | |
|-------------------------|----------|-----------------------------|---------|
| TOTAL VOLUME | | CUT VOLUME | |
| Hardwood | 760 Cds | Softwood | 658 Cds |
| Hardwood | 70 Mbf | Softwood | 23 Mbf |
| Softwood | 4105 Cds | Sum CutVol | 704 Cds |
| Softwood | 315 Mbf | | |
| Sum TotVol | 5635 Cds | | |
| Total Cmpt Acres | | Acres Proposed For Cut..... | 35 |
| 1262 | | | |

SHINGLETON FOREST MGT UNIT

**Proposed Treatments
With NO Limiting Factors**

Compartment: 55

Entry Year: 2011

| Stand | Cover Type | Acres | Age | Site Index | Mgt Obj | Condition | Method Cut | Harvest Priority | Cultural Need | FDF Status |
|---|------------|-----------|-----|------------|-----------|-------------------------------------|---------------|------------------|----------------------|------------|
| 22 | J6 | 35 | 78 | 55 | jack pine | old growth (potential or actual) | final harvest | 1 | natural regeneration | |
| <p>comnts Fmd : SCA-Deeryard. Mixture of jack pine and black spruce. Acceptable alternative management objectives include any species mixture currently found onsite. Survey work will be needed.</p> <p>Retention: The northwest edge can be excluded with the stand boundary. It has lower site quality and the trees are stunted. Leave a few red pine and white pine.</p> <p>Wld : Leave a few pine, particularly some large white pine. Retention should be left on the southeastern corner of the stand to maintain the corridor along the river.</p> | | | | | | | | | | |
| Total Acres..... | | 35 | | | | | | | | |

**Proposed Treatments
With Limiting Factors**

Compartment: 55

Entry Year: 2011

| Stand | Cover Type | Acres | Age | Site Index | Mgt Obj | Condition | Method Cut | Harvest Priority | Cultural Need | FD Status |
|--------------|-----------------------|--------------|------------|-----------------------|--------------------|------------------|-----------------------|-----------------------------|--------------------------|----------------------|
|--------------|-----------------------|--------------|------------|-----------------------|--------------------|------------------|-----------------------|-----------------------------|--------------------------|----------------------|

TREATMENT LIMITING FACTORS:

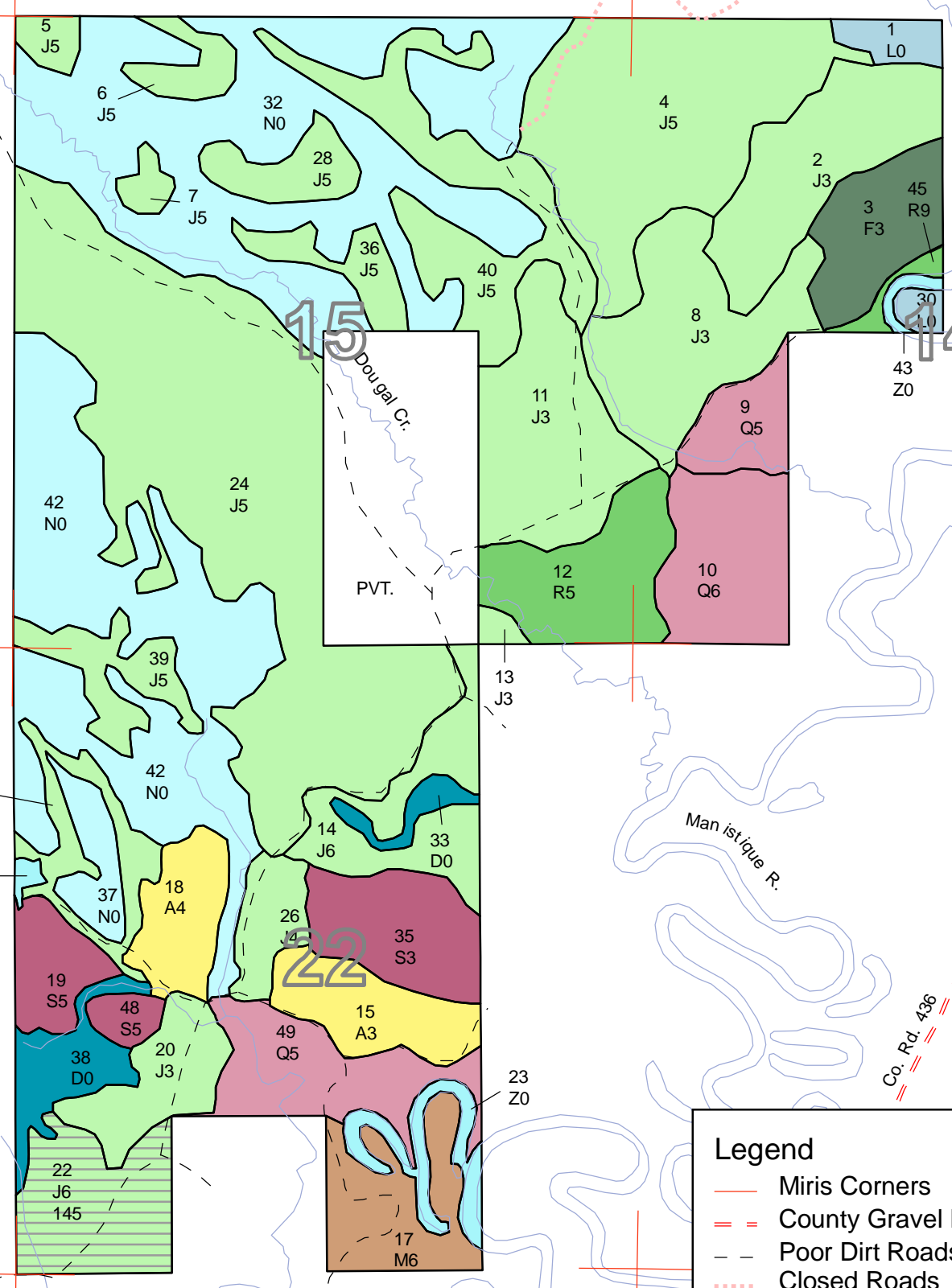
Total Acres..... 0

Compartment 55
 T43N, R14W, Sec. 14, 15, 22
 County: Schoolcraft
 Unit: Shingleton
 YOE: 2011
 Acres: 1,262 GIS Calculated
 Stand Examiner: Adam Petrelus
 Map Revised: 10/29/2009
 Map Phase: Pre-Review

Covertime & Treatment Map

1514
 22

N
 DEPARTMENT OF NATURAL RESOURCES
 DNR
 MICHIGAN



Legend

- Miris Corners
- County Gravel Roads
- Poor Dirt Roads
- Closed Roads
- Trails
- Water Features
- Stand Boundaries

Treatment

- 145 - Final harvest/Natural regeneration/Mechanical


Cover Type

- A - Aspen
- D - Treed Bog
- F - Upland Spruce or Fir
- J - Jack Pine
- L - Lowland Brush
- M - Northern Hardwoods
- N - Marsh
- Q - Mixed Swamp Conifers
- R - Red Pine
- S - Black Spruce Swamp
- Z - Water





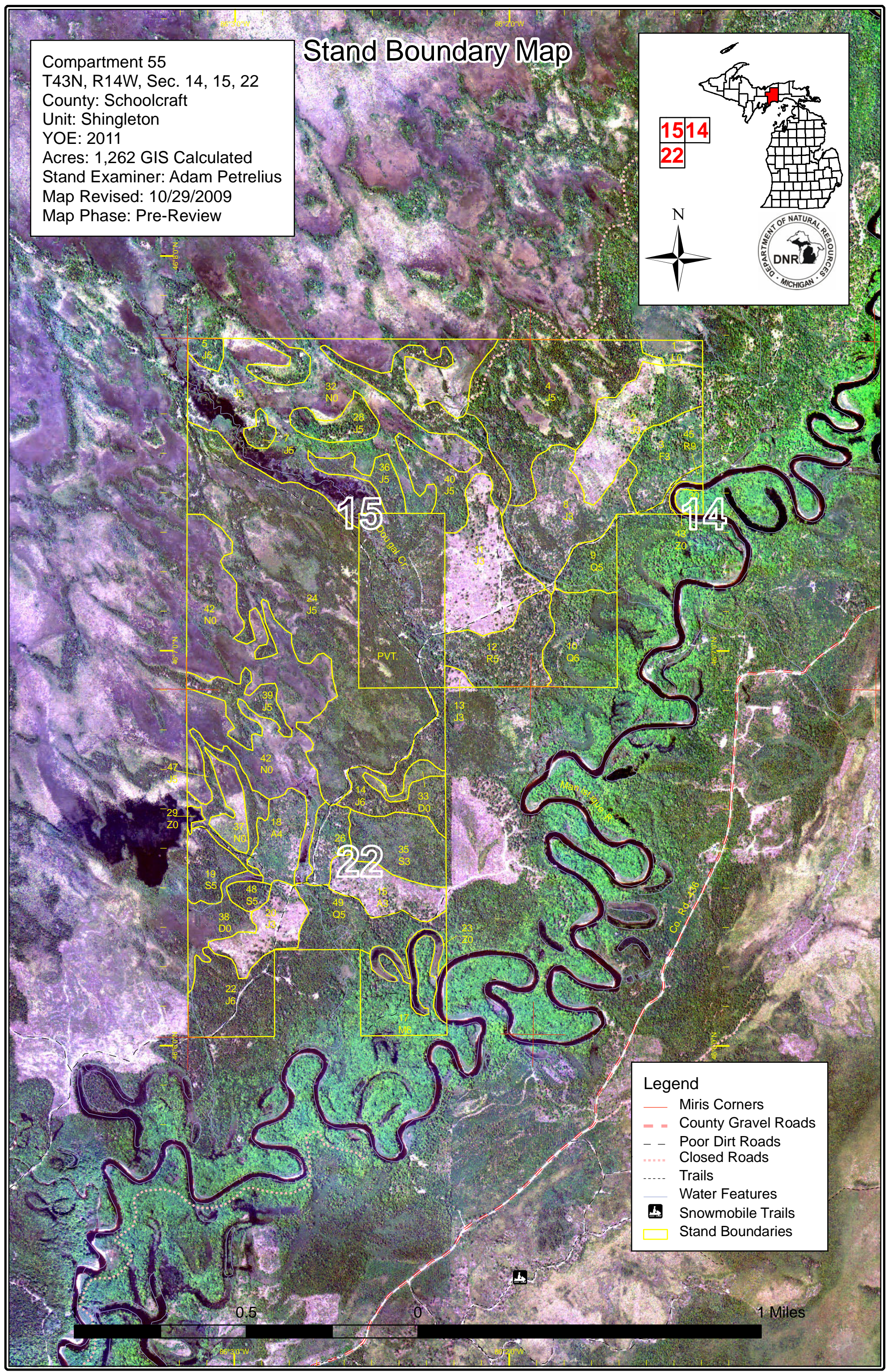
Compartment 55
 T43N, R14W, Sec. 14, 15, 22
 County: Schoolcraft
 Unit: Shingleton
 YOE: 2011
 Acres: 1,262 GIS Calculated
 Stand Examiner: Adam Petrelus
 Map Revised: 10/29/2009
 Map Phase: Pre-Review

Stand Boundary Map



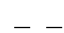

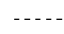





1514
22

N

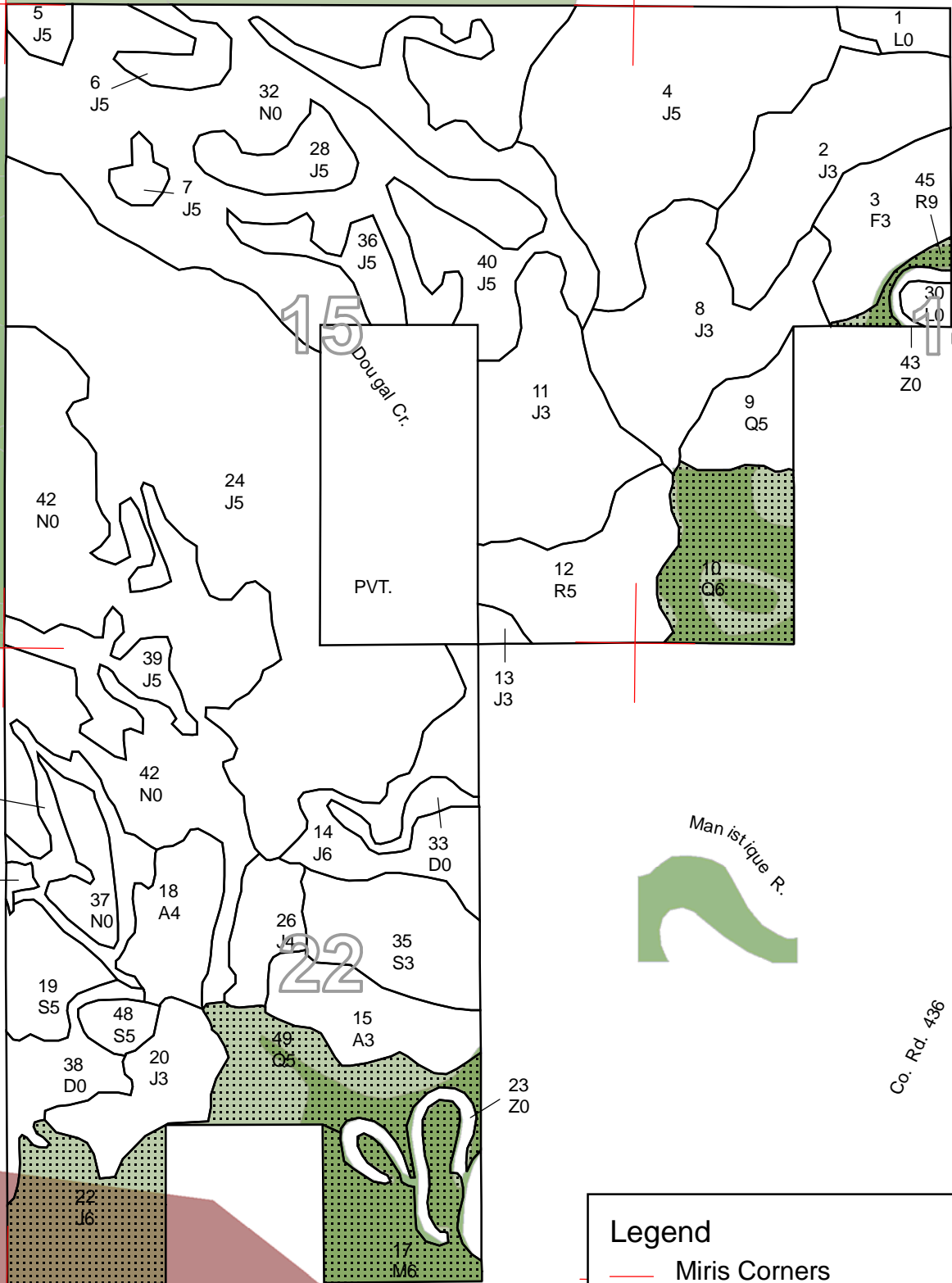
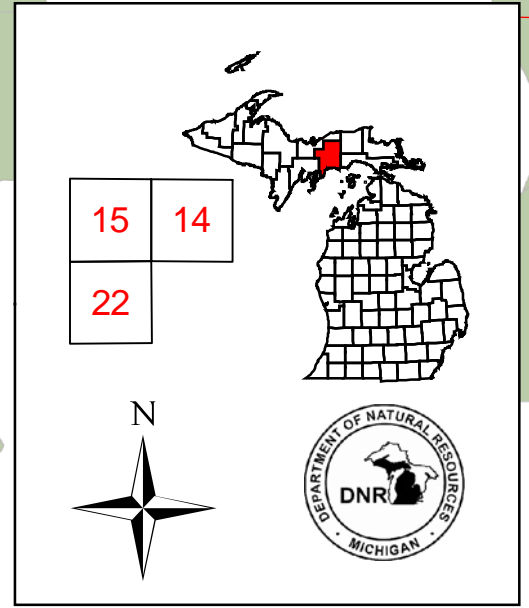
Legend

-  Miris Corners
-  County Gravel Roads
-  Poor Dirt Roads
-  Closed Roads
-  Trails
-  Water Features
-  Snowmobile Trails
-  Stand Boundaries



Dedicated & Proposed Special Conservation Area Map

Compartment 55
 T43N, R14W, Sec. 14, 15, 22
 County: Schoolcraft
 Unit: Shingleton
 YOE: 2011
 Acres: 1,262 GIS Calculated
 Stand Examiner: Adam Petrelus
 Map Revised: 10/29/2009
 Map Phase: Pre-Review



Legend

- Miris Corners
- Stand Boundaries
- Proposed SCA**
- Proposed SCA - Special Conservation Area
- Dedicated Special Conservation Areas**
- OI Special Conservation Areas
- Potential Old Growth Stands
- Deer Wintering Areas



46°80'N
46°70'N
46°60'N

46°80'N
46°70'N
46°60'N

86°30'W 86°20'W 86°10'W

86°30'W 86°20'W 86°10'W



DEDICATED CONSERVATION AREA DETAILS

* This is a list of Dedicated Biodiversity Areas for this compartment along with a 1/4 mile buffer surrounding the compartment. Refer to Dedicated Conservation Area Map for areas that the below listed Conservation Areas are located.

ERA = Ecological Reference Area
 HCVA = High Conservation Value Area
 SCA = Special Conservation Area

| Conservation Area | Type | Description |
|-------------------|----------------------------|--|
| SCA | Habitat Area | An area that provide some specific need for the life cycle of wildlife species, including State Wildlife Areas and Waterfowl Production Areas, deer wintering complexes in lowland conifer communities, grassland openings and savannas. Habitat areas are distinct from critical habitat designated for recovery of endangered or threatened species (such as Kirtland's warbler or piping plover areas) in that they are more general in nature, are not primarily associated with threatened or endangered species, and are not covered by species recovery plans that are developed in cooperation with Federal agencies. |
| SCA | Potential Old Growth Areas | This category contains stands were identified for a broad range of reasons and were coded in the OI database as stand condition 8 as potential old growth (POG). Approximately 310,000 acres have been identified through the Operations Inventory (OI)/Compartment Review process. For stands in Year of Entry 2008 and forward, potential old growth is managed for the identified objective until it is: 1) vetted through the Biodiversity Conservation Planning Process (BCPP) and given a specific designation and objective (as an ERA, HCVA, or other type of SCA) and is released from the potential old growth designation; or 2) it is released from the potential old growth designation via the Compartment Review process. |