



**SHINGLETON FOREST MANAGEMENT UNIT
COMPARTMENT REVIEW PRESENTATION**

COMPARTMENT # 61 ENTRY YEAR: 2010

Compartment Acreage: 2061 County: Schoolcraft

Revision Date: 9/22/2008

Stand Examiner: Bob Burnham

Legal Description: T43N 415W Sections 27,34,35 & 36

RMU (if applicable):

Management Goals: The goals in this compartment include conducting multiple resource management for current and future generations. Forest Health, Recreation, Biodiversity Stewardship, Wildlife and Timber Management are some of the key management components within this compartment.

Soil and Topography: Soils in the compartment are mainly mucky organics on the lowlands which make up most of the compartment and poor sands on the uplands. Topography is relatively flat with some subtle ridges.

Ownership Patterns, Development, and Land Use in and Around the Compartment: The compartment is largely contiguous State land. There is little development within the compartment with only a few camps mainly used for hunting. Due to the seasonal flooding in the area and minimal amount of private land there is little potential for development or land use.

Unique, Natural Features (include only non-site specific and non-sensitive information): Currently under review by Michigan Natural Features Inventory (MNFI).

Archeological, Historical, and Cultural Features (include only non-site specific and non-sensitive information): None known.

Special Management Designations or Considerations: Several stands along the West Branch of the Manistique River are designated as Potential Old Growth. These stands often flood in the spring. They have large tree characteristics and offer excellent wildlife habitat with their species composition.

Watershed and Fisheries Considerations: The West Branch of the Manistique River and Stutts Creek are found within this compartment and are classified as warm-water. Standard BMP's should be implemented to control sediment sources from adjacent uplands. Fine sediments such as silt and sand negatively affect natural reproduction of fish, decrease the diversity of aquatic invertebrate and fish taxa, and result in lower overall fish populations.

Wildlife Habitat Considerations: This compartment lies on northeast of the High Rollways complex on the south end of the Seney Sandy Lake Plain ecological sub-subsection. The area is dominated by upland and lowland coniferous cover. The confluence of Stutts Creek and West Branch Manistique River is contained within this compartment. Wildlife management considerations include maintaining river corridors

for species associated with riverine and floodplain habitats through incorporation of no-cut buffers, promoting early successional young conifer stands and allowing young stands to continue growing for age class diversity across the landscape, maintaining cedar stands, and leaving mature pine through shelterwood seed cut.

Mineral Resource and Development Concerns and/or Restrictions: Surface sediments consist of lacustrine (lake) sand & gravel and peat & muck. There is insufficient data to determine the glacial drift thickness. The Silurian Manitoulin Dolomite and Ordovician Queenston Shale subcrop below the glacial drift. The Manitoulin could be used for stone. Gravel pits are located four miles to the west but potential appears to be limited. There is no commercial oil and gas production in the UP.

Vehicle Access: Due to terrain and the amount of creeks access into the compartment is very broken. The eastern portion is accessed off the Old Camp Manistique Road, the middle portion is accessed from Cal's Drive and the eastern portion is accessed from the Letson Road. All of the roads are poor dirt roads.

Survey Needs: None at the present time.

Recreational Facilities and Opportunities: The compartment has one recreational facility which is a snowmobile trail. Roads within the compartment see a good amount of use from ORV enthusiasts. The remaining recreational opportunities include hunting, fishing, trapping and berry picking.

Fire Protection: Response times to fires within the compartment will be relatively slow due to its location. Fire operations will be challenging in some areas due to the lack of roads and the number of creeks present as well as the organic soils in these areas. The compartment is comprised mainly of jack pine in varying age classes which could potentially lead to some larger fires due response times, location and this volatile fuel type given the proper weather conditions.

Additional Compartment Information:

- **The following 5 reports from the Operations Inventory System (OIPC) are attached:**
 - ◆ **Cover Type by Age Class**
 - ◆ **Cover Type by Management Objective**
 - ◆ **Compartment Volume Summary**
 - ◆ **Proposed Treatments – No Limiting Factors**
 - ◆ **Proposed Treatments – With Limiting Factors**

- **The following information is displayed, where pertinent, on the attached compartment maps:**
 - ◆ **Base feature information, stand numbers, cover types**
 - ◆ **Proposed treatments**
 - ◆ **Proposed road access system**
 - ◆ **Suggested potential old growth**

11/5/2008 10:38:20 AM

Michigan Department of Natural Resources - Operations Inventory System
Individual Compartment Report

LAKE SUPERIOR STATE FOREST

SHINGLETON FOREST AREA

SCHOOLCRAFT COUNTY

COMPARTMENT: 61

Table 3

(acres shown in boxes)

STAND AGE CLASS

COVER TYPE	Not Coded	0-9	10-19	20-29	30-39	40-49	50-59	60-69	70-79	80-89	90-99	100-109	110-119	120-129	130-139	140-149	150-159	All Aged	Total
Aspen		72	9	45															126
Black Spruce		108		4						105									217
Cedar										120			50						170
Hemlock													26						26
Jack Pine		218		10	103	6	49		7	35									428
Lowlnd Brush	9																		9
Marsh	465																		465
Mx Swmp Cnfr		18						15					79						112
Paper Birch								8											8
Red Pine							12	57	112		10								191
Swamp Hrdwds				30				6			22							32	90
Treed Bog	88																		88
Upland Hdwds																		78	78
Water	53																		53
Total	615	416	9	89	103	6	61	86	119	260	32		155					110	2061

11/5/2008 10:38:21 AM

Michigan Department of Natural Resources - Operations Inventory System
Individual Compartment Report

LAKE SUPERIOR STATE FOREST

SHINGLETON FOREST AREA

SCHOOLCRAFT COUNTY

COMPARTMENT: 61

Table 3A

(acres shown in boxes)

MANAGEMENT OBJECTIVE TYPE

COVER TYPE	A	S	V	C	G	H	J	I	L	P	N	Q	X	O	B	R	K	Y	F	E	T	D	U	M	Z	W	Total
A Aspen	126																										126
S Black Spruce		217																									217
C Cedar				170																							170
H Hemlock						26																					26
J Jack Pine							428																				428
L Lowlnd Brush									9																		9
N Marsh											465																465
Q Mx Swmp Cnfr												112															112
B Paper Birch															8												8
R Red Pine																191											191
E Swamp Hrdwds																			90								90
D Treed Bog																						88					88
M Upland Hdwds																								78			78
Z Water																									53		53
Total	126	217		170		26	428		9		465	112			8	191			90			88		78	53	2061	

LAKE SUPERIOR STATE FOREST

SHINGLETON FOREST AREA

SCHOOLCRAFT COUNTY

COMPARTMENT: **61**

Table 10 - COMPARTMENT VOLUME SUMMARY - ALL STANDS

COMPARTMENT SUMMARY			
TOTAL VOLUME		CUT VOLUME	
Hardwood	3138 Cds	Hardwood	159 Cds
Hardwood	137 Mbf	Softwood	3400 Cds
Softwood	12733 Cds	Softwood	91 Mbf
Softwood	1259 Mbf	Sum CutVol	3741 Cds
Sum TotVol	18663 Cds		
Total Cmpt Acres		Acres Proposed For Cut.....	189
2061			

SHINGLETON FOREST AREA

Proposed Treatments
With NO Limiting Factors

Compartment: 61

Entry Year: 2010

Stand	Cover Type	Acres	Age	Site Index	Mgt Obj	Condition	Method Cut	Harvest Priority	Cultural Need	FDF Status
2	J6	12	86	50	jack pine	mature	final harvest	6	natural regeneration	
comnts Fmd : MANAGE WITH STAND 30, COMPARTMENT 65.										
4/16/07 BB] Sale is now on proposal, 11-07 (The Final Stand). Actual prepared acres = 10										
Stand was scheduled at the review 1 decade ago and at the 2007 review. Paint line goes to the base of the excavated ditch.										
19	J3	12	0	53	jack pine	in process of regeneration		0	other - specify in remarks	
comnts Fmd : [11-9-2003 bb] North 2/3 cut fall of 2001, S1/3 cut fall 2002. Sale is now closed and was scarified 2003										
[3-1-02] Stand Partially cut and available, cut summer 2001										
[1-27-03] Rest of stand was cut in the fall of 2002, entire acreage available.										
[10-26-03] Sale is now closed.										
[1/28/04 BB] Received a completion from Don indicating 40 acres were scarified, leaving 27 acres unscarified, this was probably due to areas with thick red pine. Schedule regen check in 2006.										
(6/1/06 AP) 2006 regen counts - jack pine - 19, red pine 67, red maple 86, aspen 200, black spruce 171, white pine 29, balsam fir 38, tamarack 10. On list to trench and plant in 2007.										
(5/29/08 AP) 11 acres was trenched and planted. The rest was too thick with red pine residual trees. Regen check in 2009.										
New Stand Comments 2008 The area that was trenched and planted is now just this portion of original stand and the remainder is Stand 80. FTP still open.										
20	J5	49	53	50	jack pine	mature	final harvest	2	planting	
comnts Fmd : East side of stand was split out. Stand is a couple of different ages. Some smaller diameter jack pine but it is at rotation age. Due to stocking cut stand, leave some red pine for seed and re-plant jack pine. Will need to buffer river. Accept only jack pine regen accept where aspen clones exist which can convert to aspen. Soils are Hiawatha Fine sand. Retention should occur in patches and emphasize areas that may be younger in age.										
33	J3	22	7	60	jack pine	in process of regeneration		0	other - specify in remarks	
comnts Fmd : RED PINE POLES SCATTERED THROUGHOUT. MEAD HAS SURROUNDING AREA PLANTED TO RED PINE. LEAVE RED PINE POLES.										
[6/23/05 BB] Sale is now closed, Brace Creek Sale, Unit 2. Stand cut fall 2001. Red pine poles were left, stand not scarified yet, may be to old. Check regeneration in 2009.										
(5/24/06 AP) Stand was trenched and planted with jack pine in spring of 06. 20,000 trees. Regen check needed in 2007.										
(11/8/06 AP) 2007 regen check - 680 jack pine, 20 black spruce, 13 red pine, 13 balsam. Regen check needed in 2009.										
37	J3	12	7	55	jack pine	in process of regeneration		0	other - specify in remarks	
comnts Fmd : [6/23/05 BB] Sale is now closed, Brace Creek Sale, unit 3. Stand cut Fall 2001. Scarification scheduled but not yet done, likely to old. Check regeneration in 2009.										
(5/24/06 AP) Stand was trenched and planted in spring 06, 10,000 jack pine. Regen check needed in 2007.										
(11/8/06 AP) 2007 regen check: 880 jack pine, 10 balsam, 10 red pine. Regen check in 2009.										
38	S0	20	3	42	black spruce-swamp	in process of regeneration		0	other - specify in remarks	
comnts Fmd : [6/23/05 BB] Sale is now closed, Brace Creek Sale. Stand cut winter 2005. Check regeneration in 2009.										
Attempted to check regen in 2008 but it faied, check again in 2009.										
40	S6	105	81	42	black spruce-swamp	mature	final harvest	2		
comnts Fmd : Stand predominantly black spruce but there is cedar and tamarack in stand as well. Soils are Dawson, Loxley Greenwood Peats. Stand has just reached rotation age and it could easily hold 1 more entry. Retention patches should occur where the cedar is the densest. Cedar can then be cut where it occurs within the stand.										
42	S0	25	7	40	black spruce-swamp	in process of regeneration		0	other - specify in remarks	
comnts Fmd : [6/23/05 BB] Sale is now closed, Brace Creek Sale. Stand cut Fall 2001. Check regeneration in 2009.										
Regen was checked and only 50% of the plots passed, so it failed. Check again in 2009 as indicated above. Soils are Kinross Muck										
49	S0	63	3	42	black spruce-swamp	in process of regeneration		0	other - specify in remarks	
comnts Fmd : [6/23/05 BB] Sale is now closed, Brace Creek Sale. Stand cut winter 2005. Check regeneration in 2009. Stand has scattered white pine in it.										
Attempted to check regen in 2008 but it faied, check again in 2009.										

SHINGLETON FOREST AREA

**Proposed Treatments
With NO Limiting Factors**

Compartment: 61

Entry Year: 2010

Stand	Cover Type	Acres	Age	Site Index	Mgt Obj	Condition	Method Cut	Harvest Priority	Cultural Need	fdf Status	
86	R6	16	74	54	red pine	immature	shelterwood-seed	2	natural regeneration		
<p>comnts Fmd : Stand is predominantly red pine which needs to be treated heavy to help establish regen. Cut stand as a shelterwood seed leaving wind firm trees and scarifying high ground to help establish regen. Cut stand heavy enough to be scarified. Soils are Clemons Deford Complex Retention should occur by leaving seed trees and excluding other species with the red line. Acceptable regen is any mix of the current species.</p>											
Total Acres.....		336									

SHINGLETON FOREST AREA

**Proposed Treatments
With Limiting Factors**

Compartment: 61

Entry Year: 2010

Stand	Cover Type	Acres	Age	Site Index	Mgt Obj	Condition	Method Cut	Harvest Priority	Cultural Need	FDI Status
34	J6	7	68	55	jack pine	mature	final harvest	2	planting	




TREATMENT LIMITING FACTORS: Inadequate volume due to small acreage

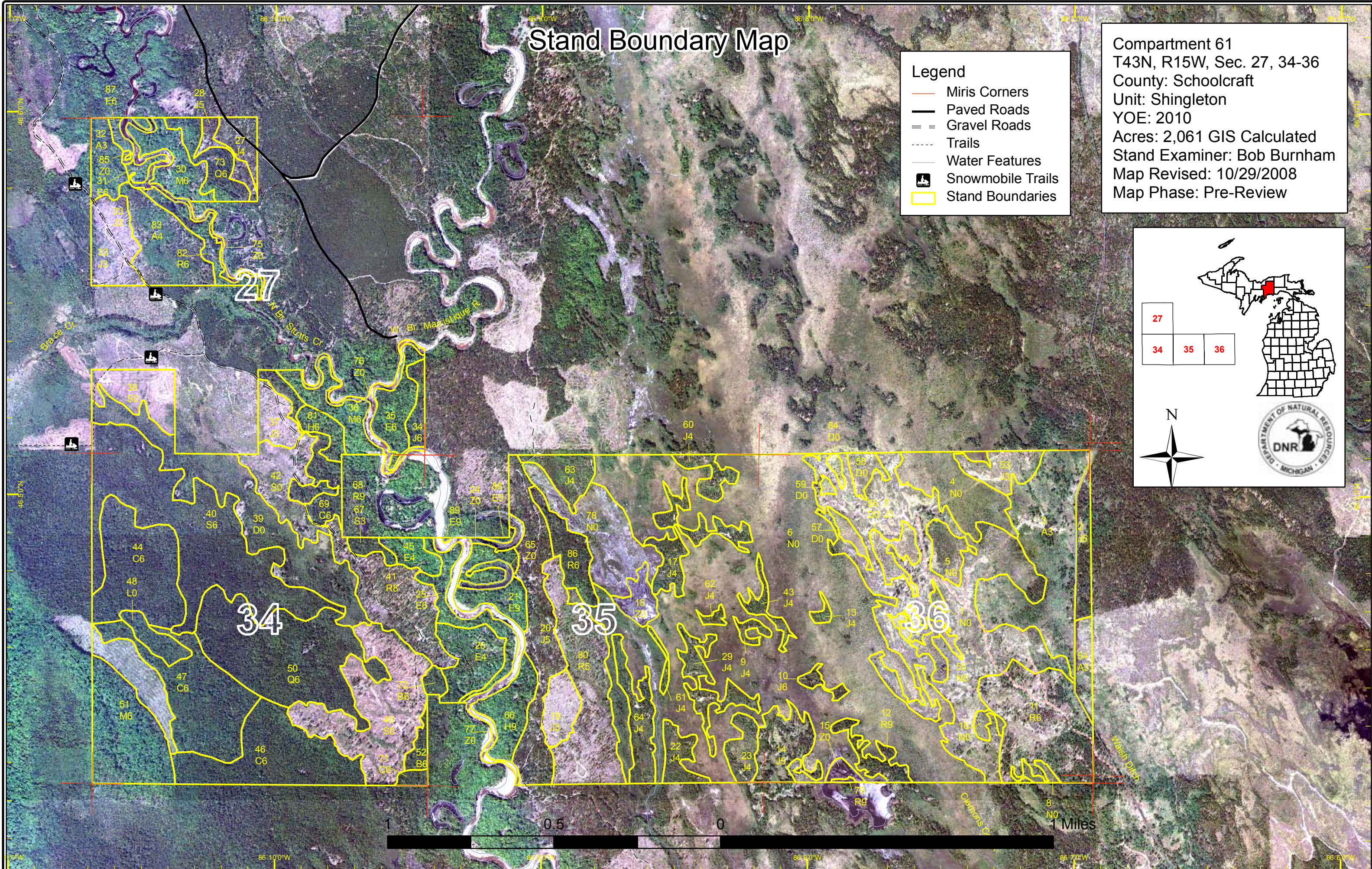
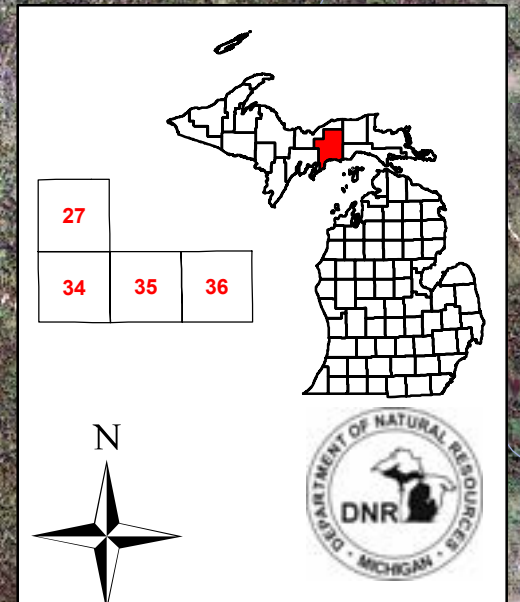
comnts Fmd : Stand is over-mature, needs to be treated but hold and treat with C-57 stand 50 in 2015. Heavy to red pine on the west side. Leave some red pine seed trees. Will need to plant stand since there is not much of a seed source. Soils are Hiawatha Fine Sands

Total Acres..... 7

Stand Boundary Map

Compartment 61
 T43N, R15W, Sec. 27, 34-36
 County: Schoolcraft
 Unit: Shingleton
 YOE: 2010
 Acres: 2,061 GIS Calculated
 Stand Examiner: Bob Burnham
 Map Revised: 10/29/2008
 Map Phase: Pre-Review

- Legend**
-  Miris Corners
 -  Paved Roads
 -  Gravel Roads
 -  Trails
 -  Water Features
 -  Snowmobile Trails
 -  Stand Boundaries



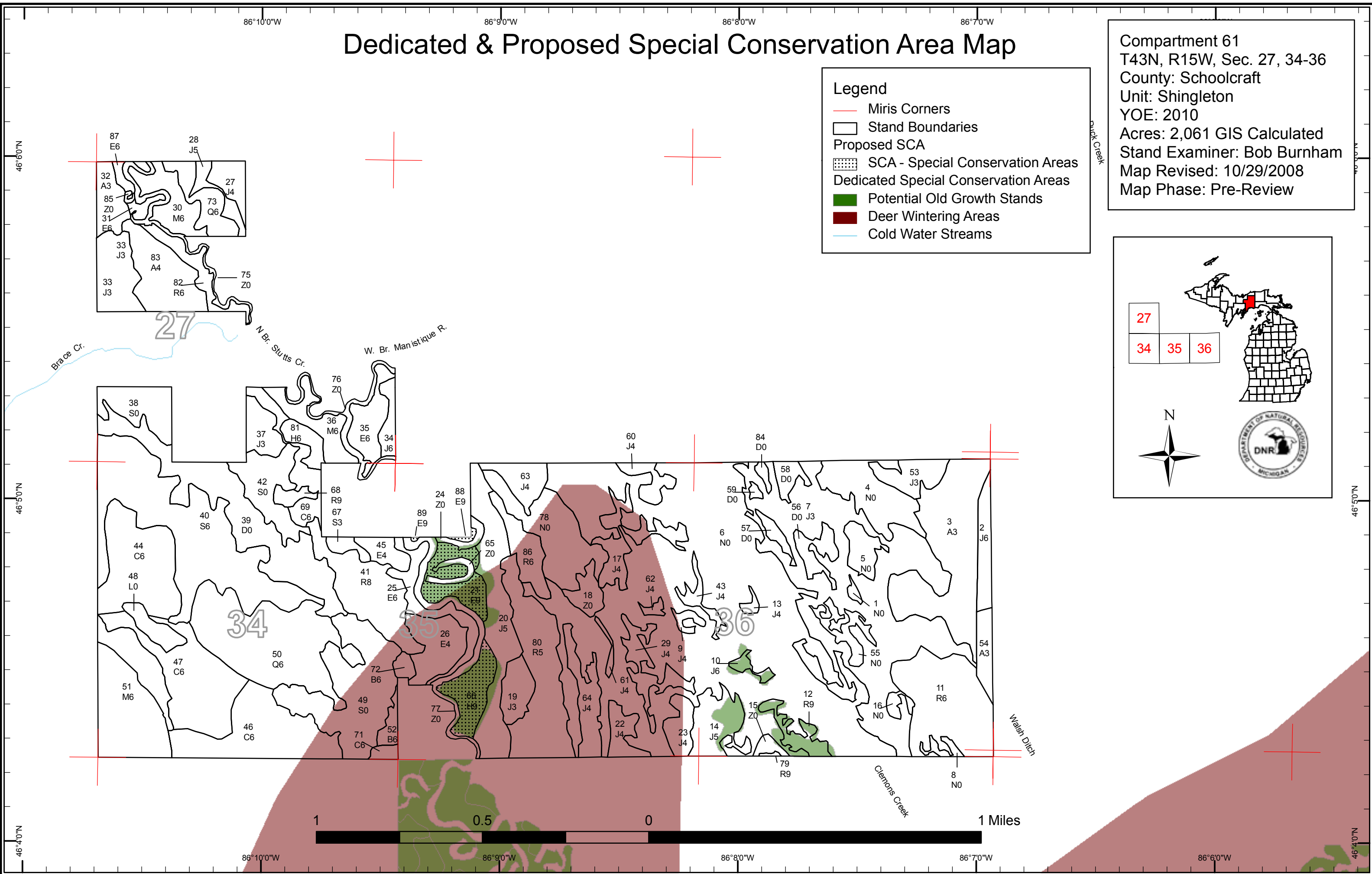
Dedicated & Proposed Special Conservation Area Map

Compartment 61
 T43N, R15W, Sec. 27, 34-36
 County: Schoolcraft
 Unit: Shingleton
 YOE: 2010
 Acres: 2,061 GIS Calculated
 Stand Examiner: Bob Burnham
 Map Revised: 10/29/2008
 Map Phase: Pre-Review

Legend

- Miris Corners
- Stand Boundaries
- Proposed SCA
 - ▨ SCA - Special Conservation Areas
- Dedicated Special Conservation Areas
 - Potential Old Growth Stands
 - Deer Wintering Areas
 - Cold Water Streams

27
34 35 36





DEDICATED CONSERVATION AREA DETAILS

* This is a list of Dedicated Biodiversity Areas for this compartment along with a 1/4 mile buffer surrounding the compartment. Refer to Dedicated Conservation Area Map for areas that the below listed Conservation Areas are located.

ERA = Ecological Reference Area
 HCVA = High Conservation Value Area
 SCA = Special Conservation Area

Conservation Area	Type	Description
SCA	Cold Water Stream	A coldwater stream has temperature and dissolved oxygen conditions that allow naturally-reproduced or stocked trout populations and those of other coldwater fish species (e.g., slimy sculpin) to persist from year to year. Coldwater streams in Michigan typically provide these conditions due to substantial contributions of groundwater to their stream flows. Such streams are established by Director's action and designated as trout resources by Fisheries Order 210.
SCA	Habitat Area	An area that provide some specific need for the life cycle of wildlife species, including State Wildlife Areas and Waterfowl Production Areas, deer wintering complexes in lowland conifer communities, grassland openings and savannas. Habitat areas are distinct from critical habitat designated for recovery of endangered or threatened species (such as Kirtland's warbler or piping plover areas) in that they are more general in nature, are not primarily associated with threatened or endangered species, and are not covered by species recovery plans that are developed in cooperation with Federal agencies.
SCA	Potential Old Growth Areas	This category contains stands were identified for a broad range of reasons and were coded in the OI database as stand condition 8 as potential old growth (POG). Approximately 310,000 acres have been identified through the Operations Inventory (OI)/Compartment Review process. For stands in Year of Entry 2008 and forward, potential old growth is managed for the identified objective until it is: 1) vetted through the Biodiversity Conservation Planning Process (BCPP) and given a specific designation and objective (as an ERA, HCVA, or other type of SCA) and is released from the potential old growth designation; or 2) it is released from the potential old growth designation via the Compartment Review process.