



**ROSCOMMON FOREST MANAGEMENT UNIT
COMPARTMENT REVIEW PRESENTATION**

COMPARTMENT # 138 ENTRY YEAR: 2010

Compartment Acreage: 1288 County: Roscommon

Revision Date: 1/8/08

Stand Examiner: D. Ekdom

Legal Description:

Management Goals: Maintain current age and species diversity in a range of early and late successional ecosystems.

Soil and Topography: Terrain ranges from flat to gently rolling in the west part of the compartment and hilly with some steep terrain in the east part of the compartment. Soils in the upland areas of the compartment are primarily Rubicon sand with some Grayling and Saugatuck sand. Soils in the lowland areas are Newton loamy sand and Rifle peat.

Ownership Patterns, Development, and Land Use in and Around the Compartment: This compartment is 100% state owned. The east edge of the compartment borders on Mid Forest Lodge and the rest of the compartment is surrounded by state land.

Unique, Natural Features: No MNFI concerns within the compartment and none found during fieldwork.

Archeological, Historical, and Cultural Features: No SHPO hits currently in the compartment and none were found during fieldwork.

Special Management Designations or Considerations: The west part of the compartment (Stand 26) is part of the draft "old growth/bio-diversity stewardship" plan and is designated as an SCA. Additional stands are proposed to add to this SCA to make a larger contiguous area.

Watershed and Fisheries Considerations: No free flowing streams within the compartment but there is potential for erosion on the numerous fire break roads and the recreational trails.

Wildlife Habitat Considerations: Maintain ecosystem diversity in the compartment via habitat manipulation to benefit game species such as deer, grouse, rabbits, and turkeys as well as non-game species. Potential for deeryards in this compartment.

Mineral Resource and Development Concerns and/or Restrictions: Surface sediments consist of ice-contact and glacial outwash sand and gravel and postglacial alluvium. The glacial drift thickness varies between 400 and 600 feet. Beneath the glacial drift are the Pennsylvanian Saginaw Formation, and the Mississippian Bayport Limestone and Michigan Formation. The Saginaw is quarried for brick making clay, the Bayport for limestone and the Michigan for gypsum elsewhere in the State. Most of the good gravel pits are associated with upland areas. A gravel pit is located in Section 12 and potential is good on the uplands. Headquarters Field is located two miles to the south. The field has produced over 11.3 million BO and 4.2

Bcf gas primarily from the Devonian Richfield Formation and is in secondary recovery operations currently. The Compartment is nominated for the May 2008 oil and gas lease auction.

Vehicle Access: Good access to most of the compartment via M-18, seasonal county roads, forest two-tracks/recreational trails, and old fire breaks.

Survey Needs: None necessary at this time.

Recreational Facilities and Opportunities: Compartment contains an ORV trail, an ORV route, and the Houghton Lake snowmobile trail. Compartment is also heavily used for hunting.

Fire Protection: There are large tracts of pine in this compartment which increases fire risk as does the presence of the many recreational trails. A large portion of this compartment burned in the 2005 Boyce Lake Fire.

Additional Compartment Information: The illegal ORV trails on Mallory Hill in the W1/2 of Section 12 were rehabilitated in the summer of 2007. Approximately 150 acres of red pine were salvaged after the Boyce Lake Fire and re-planted to red pine in 2007. Proposed treatments this year-of-entry include 29 acres of final harvests in oak and jack pine cover types

- **The following 5 reports from the Operations Inventory System (OIPC) are attached:**
 - ◆ **Cover Type by Age Class**
 - ◆ **Cover Type by Management Objective**
 - ◆ **Compartment Volume Summary**
 - ◆ **Proposed Treatments – No Limiting Factors**
 - ◆ **Proposed Treatments – With Limiting Factors**

- **The following information is displayed, where pertinent, on the attached compartment maps:**
 - ◆ **Base feature information, stand numbers, cover types**
 - ◆ **Proposed treatments**
 - ◆ **Proposed road access system**
 - ◆ **Suggested potential old growth**

8/7/2008 1:51:57 PM

Michigan Department of Natural Resources - Operations Inventory System
Individual Compartment Report

AUSABLE STATE FOREST

ROSCOMMON FOREST MGT UNIT

ROSCOMMON COUNTY

COMPARTMENT: 138

Table 3

(acres shown in boxes)

STAND AGE CLASS

COVER TYPE	Not Coded	0-9	10-19	20-29	30-39	40-49	50-59	60-69	70-79	80-89	90-99	100-109	110-119	120-129	130-139	140-149	150-159	All Aged	Total
Aspen		49	44	4		7													104
Grass	26																		26
Jack Pine		46		51						26									123
Lowlnd Brush	9																		9
Marsh	59																		59
Mx Swmp Cnfr												10		19					29
Oak		102							46	117	9								274
Red Pine		318							48	48	5	22							441
Treed Bog	3																		3
Upland Brush	11																		11
Upland Hdws											3								3
White Pine				35			77	40		54									206
Total	108	515	44	90		7	77	40	94	245	17	32		19					1288

8/7/2008 1:52:00 PM

Michigan Department of Natural Resources - Operations Inventory System
Individual Compartment Report

AUSABLE STATE FOREST

ROSCOMMON FOREST MGT UNIT

ROSCOMMON COUNTY

COMPARTMENT: 138

Table 3A

(acres shown in boxes)

MANAGEMENT OBJECTIVE TYPE

COVER TYPE	A	S	V	C	G	H	J	I	L	P	N	Q	X	O	B	R	K	Y	F	E	T	D	U	M	Z	W	Total
A Aspen	104																										104
G Grass					26																						26
J Jack Pine							123																				123
L Lowlnd Brush									9																		9
N Marsh											59																59
Q Mx Swmp Cnfr												29															29
O Oak	3													271													274
R Red Pine																441											441
D Treed Bog																						3					3
U Upland Brush																								11			11
M Upland Hdwds																								3			3
W White Pine																										206	206
Total	107				26		123		9		59	29		271		441						3	11	3		206	1288

AUSABLE STATE FOREST

ROSCOMMON FOREST MGT UNIT

ROSCOMMON COUNTY

COMPARTMENT: **138**

Table 10 - COMPARTMENT VOLUME SUMMARY - ALL STANDS

COMPARTMENT SUMMARY			
TOTAL VOLUME		CUT VOLUME	
Hardwood	2412 Cds	Hardwood	76 Cds
Hardwood	1021 Mbf	Hardwood	2 Mbf
Softwood	3684 Cds	Softwood	374 Cds
Softwood	855 Mbf	Sum CutVol	454 Cds
Sum TotVol	9848 Cds		
Total Cmpnt Acres		Acres Proposed For Cut.....	29
1288			

ROSCOMMON FOREST MGT UNIT

**Proposed Treatments
With NO Limiting Factors**

Compartment: 138 Entry Year: 2010

Stand	Cover Type	Acres	Age	Site Index	Mgt Obj	Condition	Method Cut	Harvest Priority	Cultural Need	fdf Status	
13	O6	3	79	55	aspen (upland)	mature	final harvest	1	natural regeneration	prescribed for fdf treatment	
comnts Fmd : NORTH PORTION BURNED IN 2005 BOYCE LAKE FIRE, CUT AND MANAGE FOR ASPEN, EXPAND CUT SOUTH INTO STAND #18 IF FEASIBLE,LEAVE WHITE OAK FOR MAST TREES, NO RETENTION DUE TO SMALL SIZE AND AGE OF STAND.											
51	J5	26	83	50	jack pine	mature	final harvest	1	planting		
comnts Fmd : POOR QUALITY/SHORT,BUSHY JACK PINE OF NUMEROUS AGES, SCATTERED RED PINE/OAK SAWLOGS, CUT AND REGENERATE TO JACK PINE, MARK OAK (ESPECIALLY WHITE OAK) TO LEAVE FOR MAST, SAVE AS MUCH OF THE ADVANCED OAK REGENERATION AS POSSIBLE, LEAVE THREE 1/3 ACRE ISLANDS FOR RETENTION											
Total Acres.....		29									

**Proposed Treatments
With Limiting Factors**

Compartment: 138

Entry Year: 2010

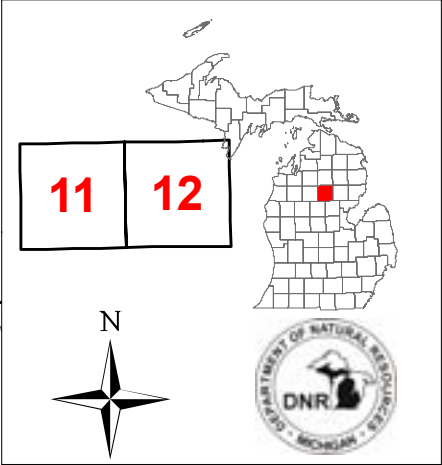
Stand	Cover Type	Acres	Age	Site Index	Mgt Obj	Condition	Method Cut	Harvest Priority	Cultural Need	FD Status
--------------	-----------------------	--------------	------------	-----------------------	--------------------	------------------	-----------------------	-----------------------------	--------------------------	----------------------

TREATMENT LIMITING FACTORS:

Total Acres..... 0

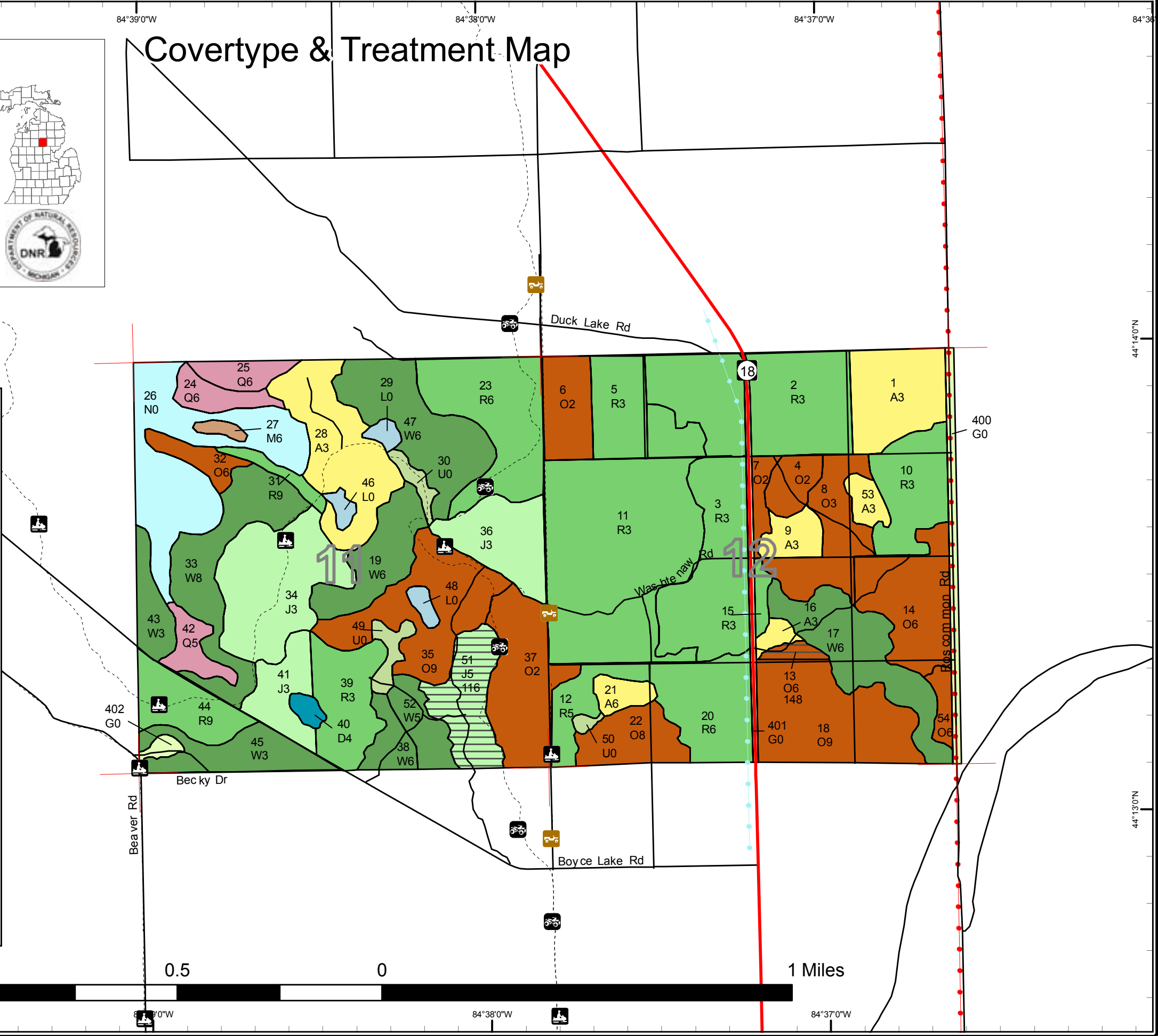
Covertypes & Treatment Map

Compartment 138
 T21N, R03W, Sec. 11, 12
 County: Roscommon
 Unit: Roscommon
 YOE: 2010
 Acres: 1,288 GIS Calculated
 Stand Examiner: Dale Ekdom
 Map Revised: 7/29/2008
 Map Phase: Pre-review

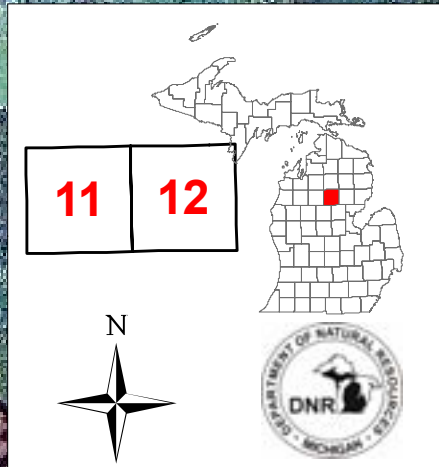


Legend

- Miris Corners
- Highways
- Paved Roads
- Poor Dirt Roads
- Trails
- Powerline
- Pipeline
- State Highway
- ORV Routes
- ORV Trails
- Snowmobile Trails
- Stand Boundary
- 116 - Final Harvest/Planting
- 148 - Final Harvest/Natural Regeneration/Other
- A - Aspen
- D - Treed Bog
- G - Grass
- J - Jack Pine
- L - Lowland Brush
- M - Northern Hardwoods
- N - Marsh
- O - Oak
- Q - Mixed Swamp Conifers
- R - Red Pine
- U - Upland Brush
- W - White Pine

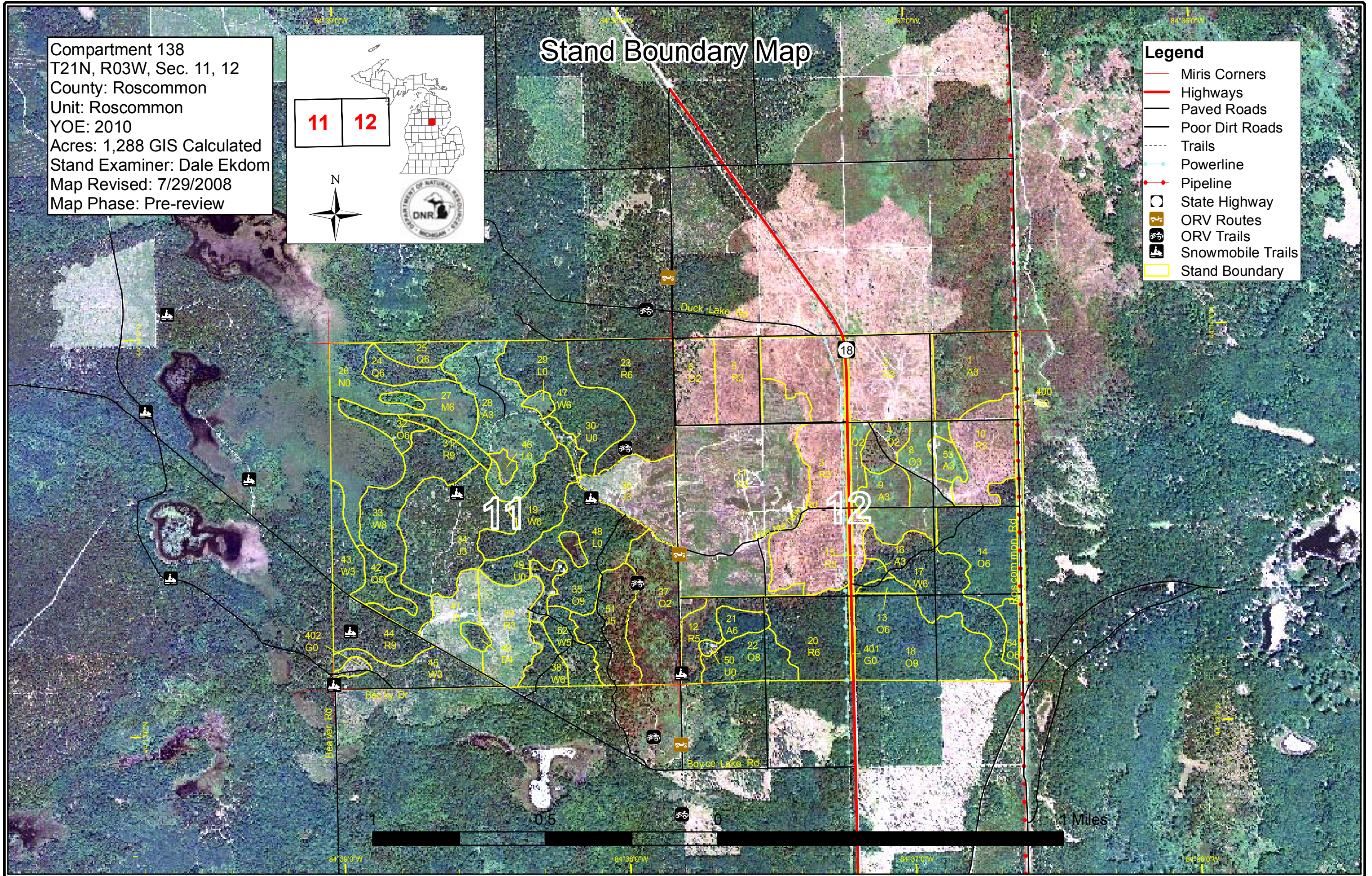


Compartment 138
 T21N, R03W, Sec. 11, 12
 County: Roscommon
 Unit: Roscommon
 YOY: 2010
 Acres: 1,288 GIS Calculated
 Stand Examiner: Dale Ekdorn
 Map Revised: 7/29/2008
 Map Phase: Pre-review



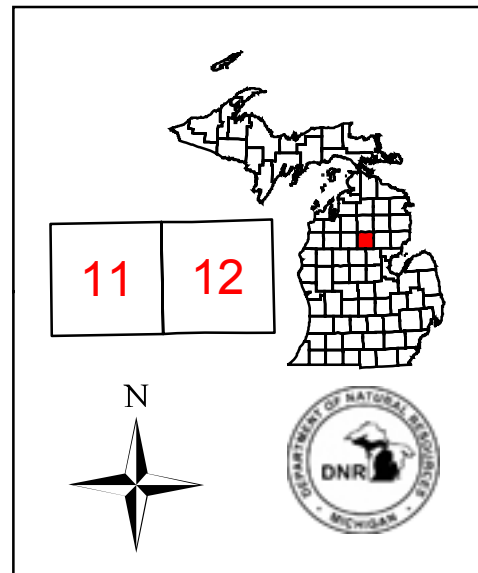
Stand Boundary Map

- Legend**
- Miris Corners
 - Highways
 - Paved Roads
 - Poor Dirt Roads
 - - - Trails
 - Powerline
 - Pipeline
 - State Highway
 - ORV Routes
 - ORV Trails
 - Snowmobile Trails
 - Stand Boundary

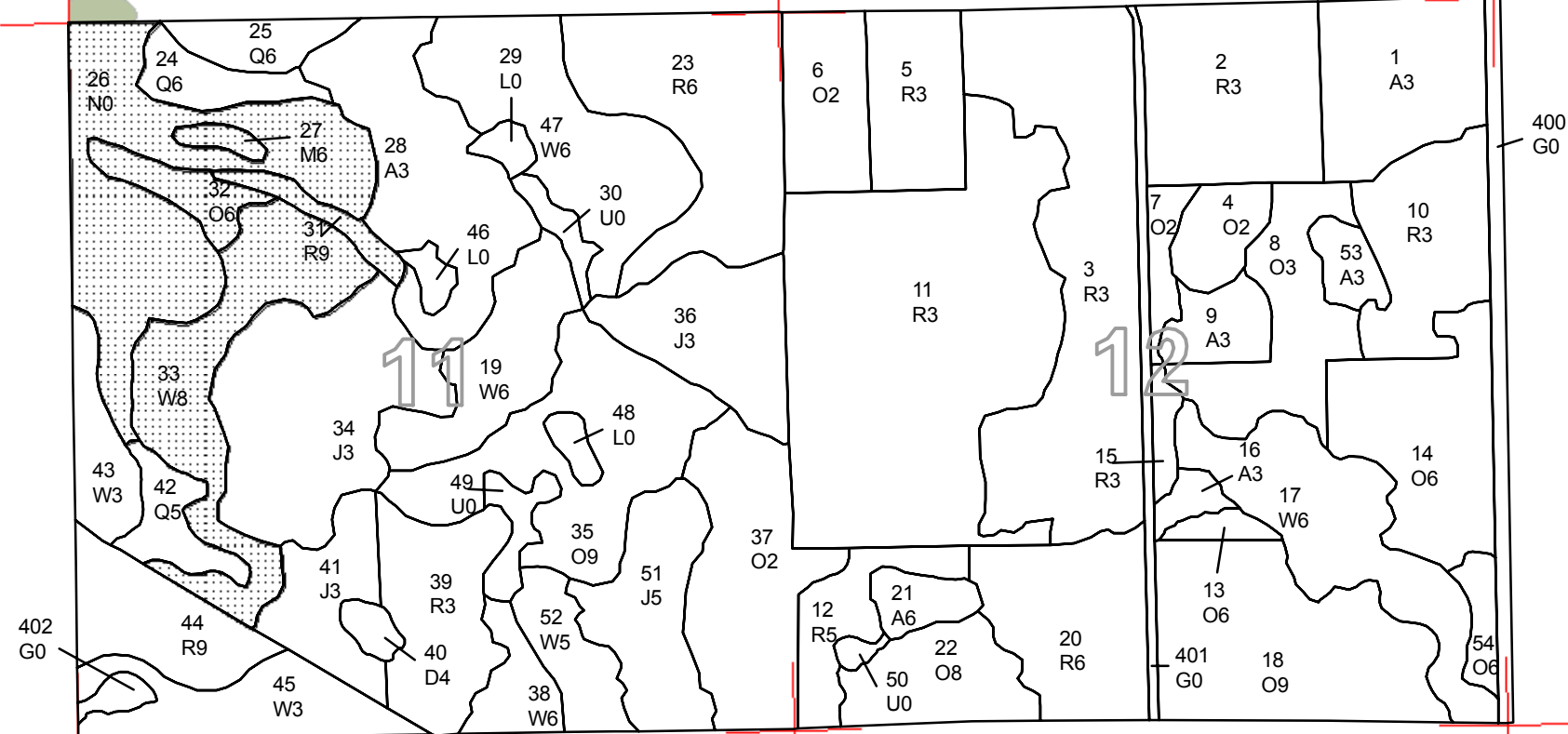


Dedicated & Proposed Special Conservation Area Map

Compartment 138
 T21N, R03W, Sec. 11, 12
 County: Roscommon
 Unit: Roscommon
 YOE: 2010
 Acres: 1,288 GIS Calculated
 Stand Examiner: Dale Ekdorn
 Map Revised: 7/29/2008
 Map Phase: Pre-review



- Legend**
- Miris Corners
 - Stand Boundaries
 - Cold Water Streams
 - Special Conservation Areas
 - IFMAP Special Conservation Areas
 - OI Special Conservation Areas
 - Potential Old Growth Stands



44°14'0"N
44°13'0"N

44°14'0"N
44°13'0"N

84°40'0"W 84°39'0"W 84°38'0"W 84°37'0"W 84°36'0"W



DEDICATED CONSERVATION AREA DETAILS

* This is a list of Dedicated Biodiversity Areas for this compartment along with a 1/4 mile buffer surrounding the compartment. Refer to Dedicated Conservation Area Map for areas that the below listed Conservation Areas are located.

ERA = Ecological Reference Area
 HCVA = High Conservation Value Area
 SCA = Special Conservation Area

Conservation Area	Type	Description
SCA	Archaeological Site	An aquatic or terrestrial area of the State that contains physical remains of human occupation. These are sites of cultural and historical significance that may occur upon terrestrial areas and Great Lakes bottomlands. They include thousands of Native American settlements and burial sites, as well as French and British outposts, nineteenth century logging camps, mines and homesteads. Beneath the waters of the Great Lakes, there are shipwrecks and other remains documenting the maritime trade. Such sites may be identified by Natural heritage data from the State Historic Preservation Office. Proposed treatments in this compartment will be implemented in such a manner as to maintain the integrity of these sites. Due to the sensitive nature of this information, no further detail about location is available.
SCA	Potential Old Growth Areas	This category contains stands were identified for a broad range of reasons and were coded in the OI database as stand condition 8 as potential old growth (POG). Approximately 310,000 acres have been identified through the Operations Inventory (OI)/Compartment Review process. For stands in Year of Entry 2008 and forward, potential old growth is managed for the identified objective until it is: 1) vetted through the Biodiversity Conservation Planning Process (BCPP) and given a specific designation and objective (as an ERA, HCVA, or other type of SCA) and is released from the potential old growth designation; or 2) it is released from the potential old growth designation via the Compartment Review process.