



**PIGEON RIVER COUNTRY MANAGEMENT UNIT  
COMPARTMENT REVIEW PRESENTATION**

**COMPARTMENT #49 ENTRY YEAR: 2003**

**Compartment Acreage:1625  
County: OTSEGO**

---

**Revision Date:**

August 28, 2003 (august 20, 2008)

**Stand Examiner:**

Ken Phillips

**Legal Description:**

T31N R01W Sections 1, 12, 13

**RMU (if applicable):**

Not Applicable

**Management Goals:**

Maintain current species mix and apply appropriate management techniques to mature stands of timber that are in need of treatment.

**Soil and Topography:**

Very flat topography typifies this compartment. Uplands are dominated by somewhat excessively drained sands. Lowlands are generally found on organic peat soils. The southern portion of Section 13 includes complex mixtures of uplands that are interspersed with pockets of lowlands.

**Ownership Patterns, Development, and Land Use in and Around the Compartment:**

Fairly undeveloped private parcels are found in section 1 and Section 12. This compartment adjoins private lands on the entire southern boundary as well as portions of the eastern boundary.

**Unique, Natural Features (include only non-site specific and non-sensitive information):**

None identified.

**Archeological, Historical, and Cultural Features (include only non-site specific and non-sensitive information):**

None identified.

**Special Management Designations or Considerations:**

None ( August 20, 2008 This compartment has been chosen as part of the Red Pine Project. Stand 88 will be treated out of entry year for this reason.)

**Watershed and Fisheries Considerations:**

The mainstream of the Black River flows through section 1. Tubb's Creek and Hodge Creek flow through Section 12 and Section 13. Both of these creeks are impounded by several current beaver floodings.

**Wildlife Habitat Considerations:**

A Wildlife Division representative will be available to participate in the formal compartment review.

**Mineral Resource and Development Concerns and/or Restrictions:**

Surface sediments consist of coarse textured glacial till (uplands) and glacial outwash sand and gravel and postglacial alluvium. Glacial drift thickness varies between 400 and 800 feet. There is approximately 80 feet of local relief within the compartment. Beneath the Glacial drift is the Devonian Bedford and Antrim Shales. The Antrim is quarried for clay/shale (cement) elsewhere in the State. The nearest gravel pit is two and one-half miles to the south, and potential is considered good on the uplands. This area is partially leased for oil and gas development until 2001. The Antrim Shale development is located along the south and east edge of the compartment. The Niagaran trend produces to the west. There is excellent potential for known producing formations in this compartment.

**Vehicle Access:**

South of the Black River, vehicle access is restricted to Sawdust Pile road. North of the river two trail roads allow access to private property and the river.

**Survey Needs:**

Private lines in section 12 will have to be established to do work in Stand 88 for the Red Pine Project. (2008)

**Recreational Facilities and Opportunities:**

The High Country pathway passes through Section 1, crossing the Black river and Hodge Creek on wooden bridges. Portions of the pathway pass through stands #37 and #49 are on raised boardwalks due to wet ground conditions.

**Fire Protection:**

Access is good in case of any fire suppression efforts.

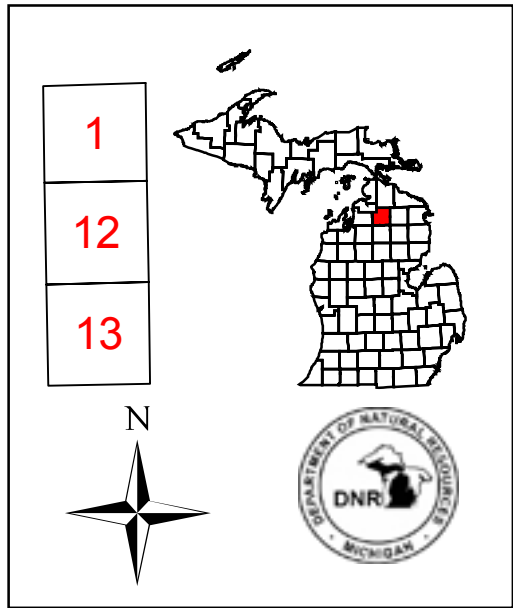
**Additional Compartment Information:**

- **The following 5 reports from the Operations Inventory System (OIPC) are attached:**
  - ◆ **Cover Type by Age Class**
  - ◆ **Cover Type by Management Objective**
  - ◆ **Compartment Volume Summary**
  - ◆ **Proposed Treatments – No Limiting Factors**
  - ◆ **Proposed Treatments – With Limiting Factors**
  
- **The following information is displayed, where pertinent, on the attached compartment maps:**
  - ◆ **Base feature information, stand numbers, cover types**
  - ◆ **Proposed treatments**
  - ◆ **Proposed road access system**
  - ◆ **Suggested potential old growth**

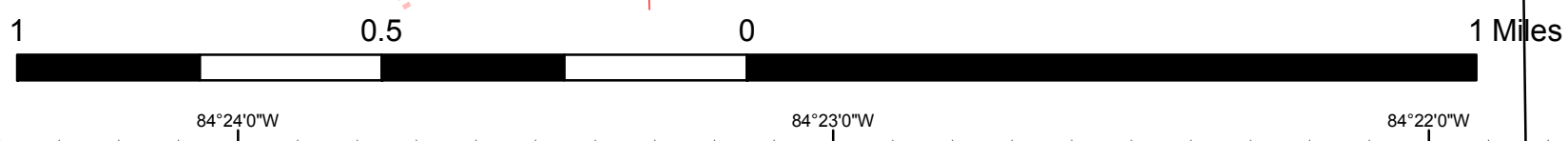
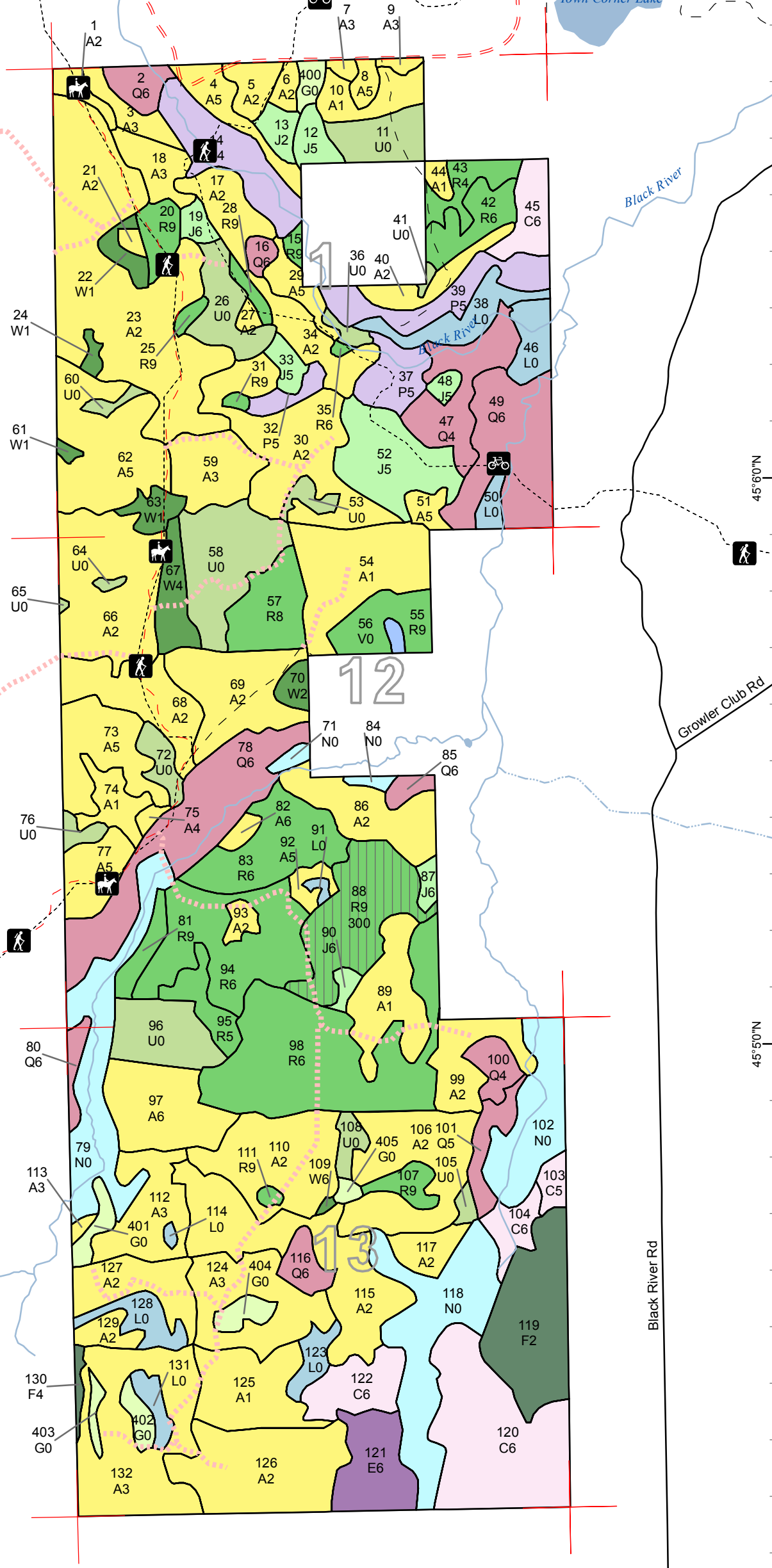
Stand	Cover Type	Acres	Age	Site Index	Mgt Obj	Condition	Method Cut	Harvest Priority	Cultural Need	FDf Status	
88	R9	33	73	55	white pine	immature	shelterwood-seed	1			
comnts Fmd : 2008 THIS STAND IS A RPP PHASE TWO STAND. CUT ASPEN AROUND SMALL L TYPE AREAS AND EXPAND. CUT ALL PINE IN THESE AREAS. EXPECT RED AND WHITE PINE AS WEL AS ASPEN, RED AMPLE AND U TO REGENERATE THE STAND.											
<b>Total Acres.....</b>		<b>33</b>									

# Cover Type & Treatment Map

Compartment 49  
 T33N, R01W, Sec. 1, 12, 13  
 County: Otsego  
 Unit: Pigeon River  
 YOE: 2003  
 Acres: 1,625 GIS Calculated  
 Stand Examiner: Don Mittlestat  
 Map Revised: 6/26/2008  
 Map Phase: Pre-review

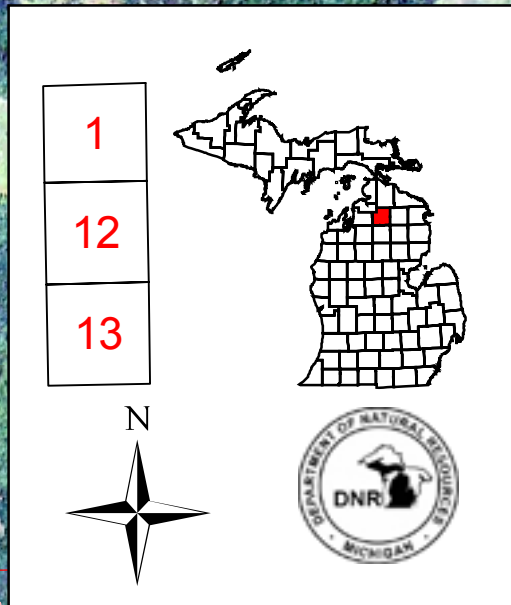


- Legend**
- Miris Corners
  - County Gravel Road
  - County Poor Dirt Road
  - Paved Road
  - Poor Dirt Road
  - Closed Road
  - Intermittent Stream/Drain
  - Stream
  - Lakes and Rivers All
  - Trail
  - Bike Trails
  - Hiking Trails
  - Horse Trails
  - Stand Boundary
  - 300 - Shelterwood-seed
  - A - Aspen
  - C - Northern White Cedar
  - E - Swamp Hardwoods
  - F - Upland Spruce or Fir
  - G - Grass
  - J - Jack Pine
  - L - Lowland Brush
  - N - Marsh
  - P - Balsam Poplar Swamp
  - Q - Mixed Swamp Conifer
  - R - Red Pine
  - U - Upland Brush
  - V - Bog or Muskeg
  - W - White Pine

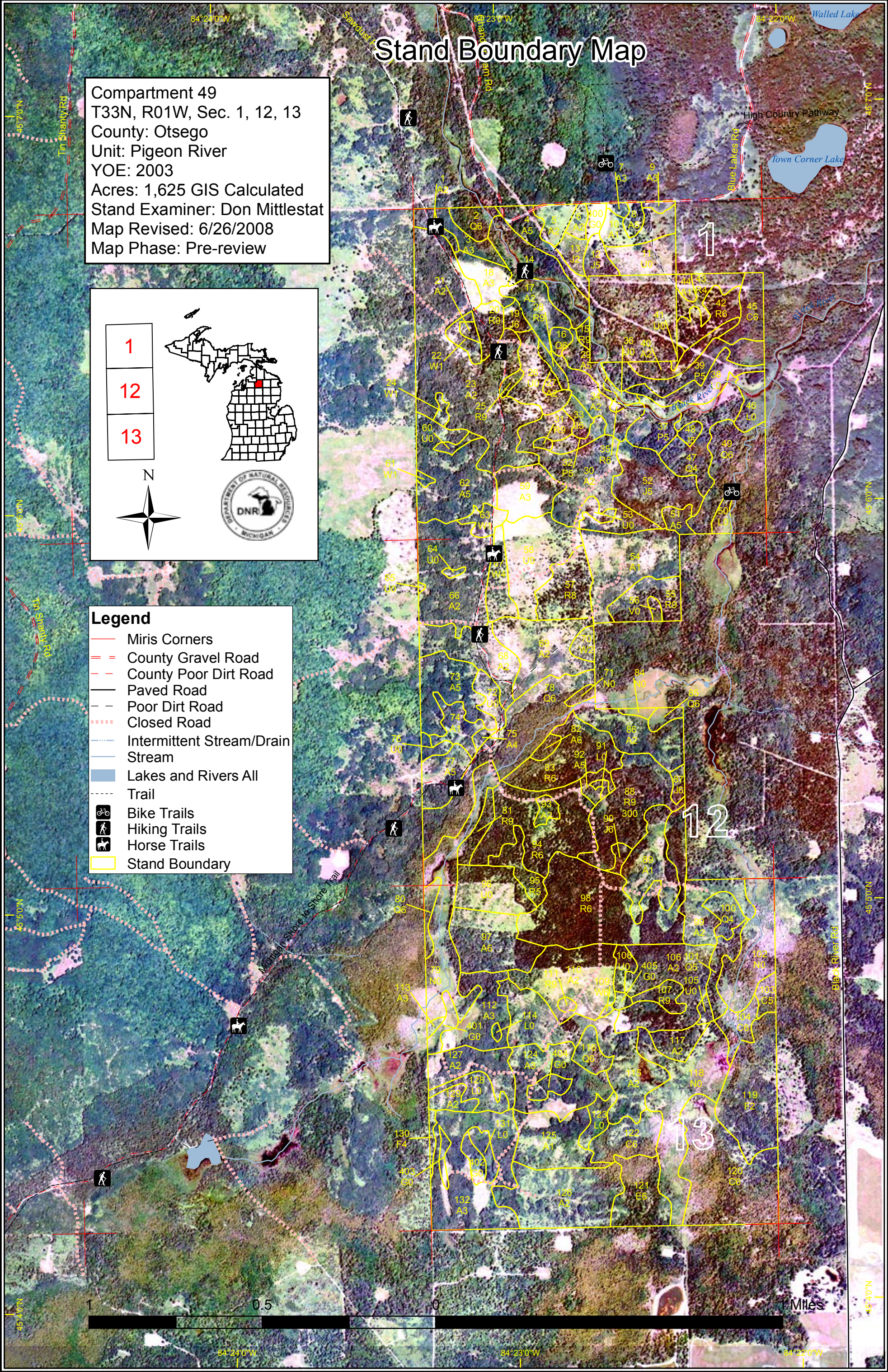


# Stand Boundary Map

Compartment 49  
 T33N, R01W, Sec. 1, 12, 13  
 County: Otsego  
 Unit: Pigeon River  
 YOE: 2003  
 Acres: 1,625 GIS Calculated  
 Stand Examiner: Don Mittlestat  
 Map Revised: 6/26/2008  
 Map Phase: Pre-review

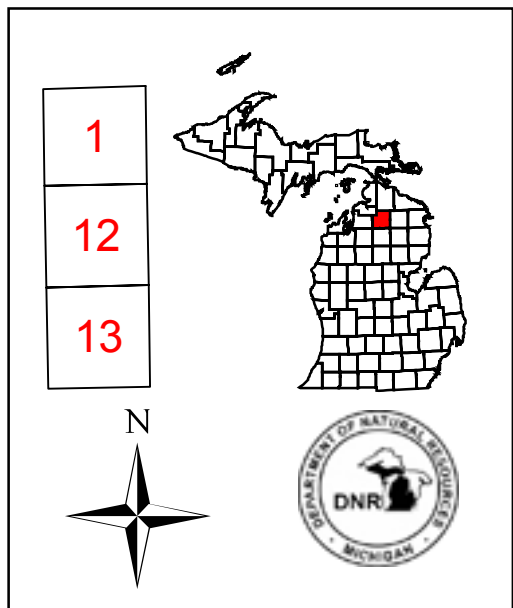


- Legend**
- Miris Corners
  - = County Gravel Road
  - - County Poor Dirt Road
  - Paved Road
  - - Poor Dirt Road
  - - - Closed Road
  - - - Intermittent Stream/Drain
  - Stream
  - Lakes and Rivers All
  - - - Trail
  - Bike Trails
  - Hiking Trails
  - Horse Trails
  - Stand Boundary

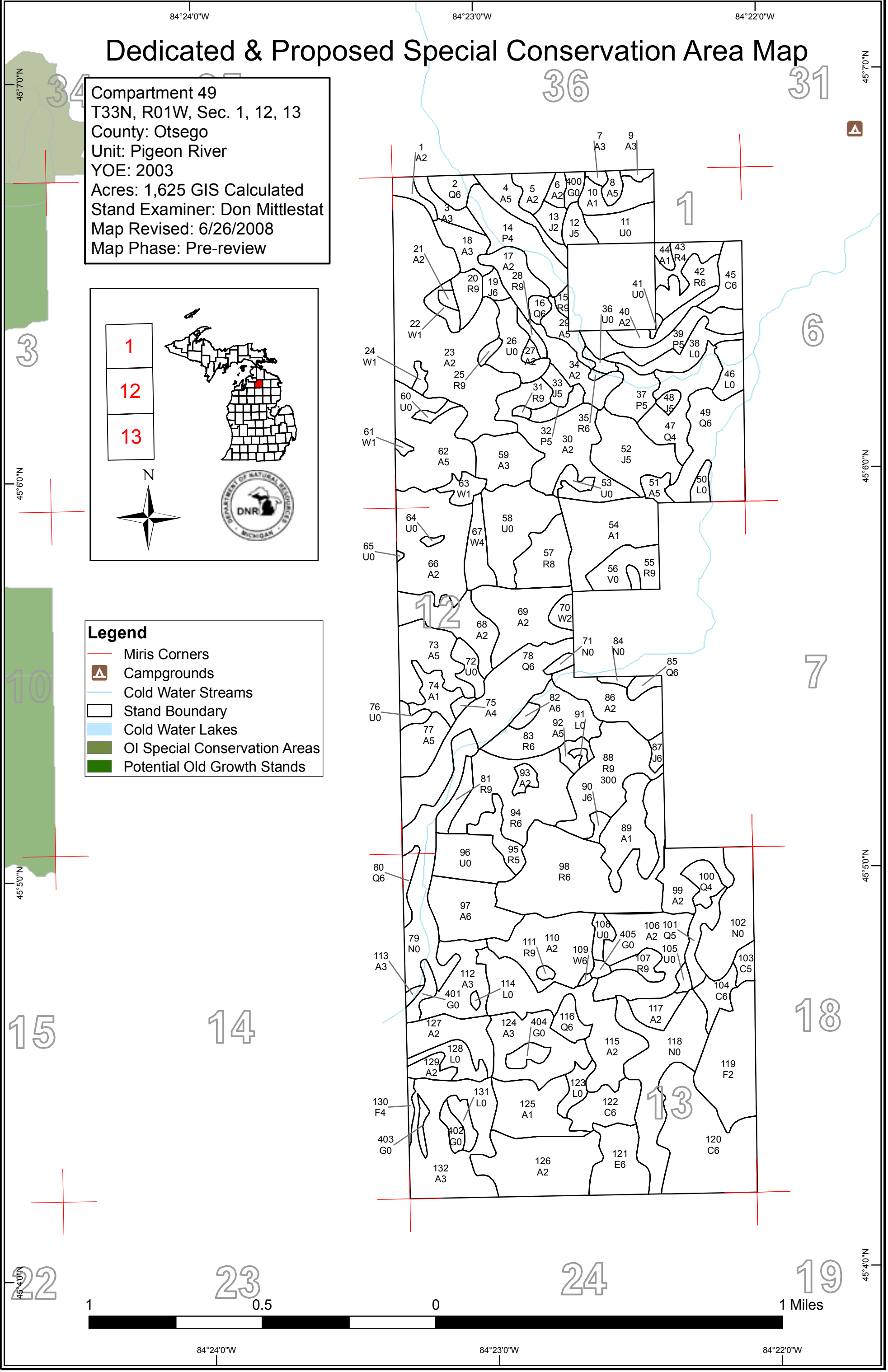
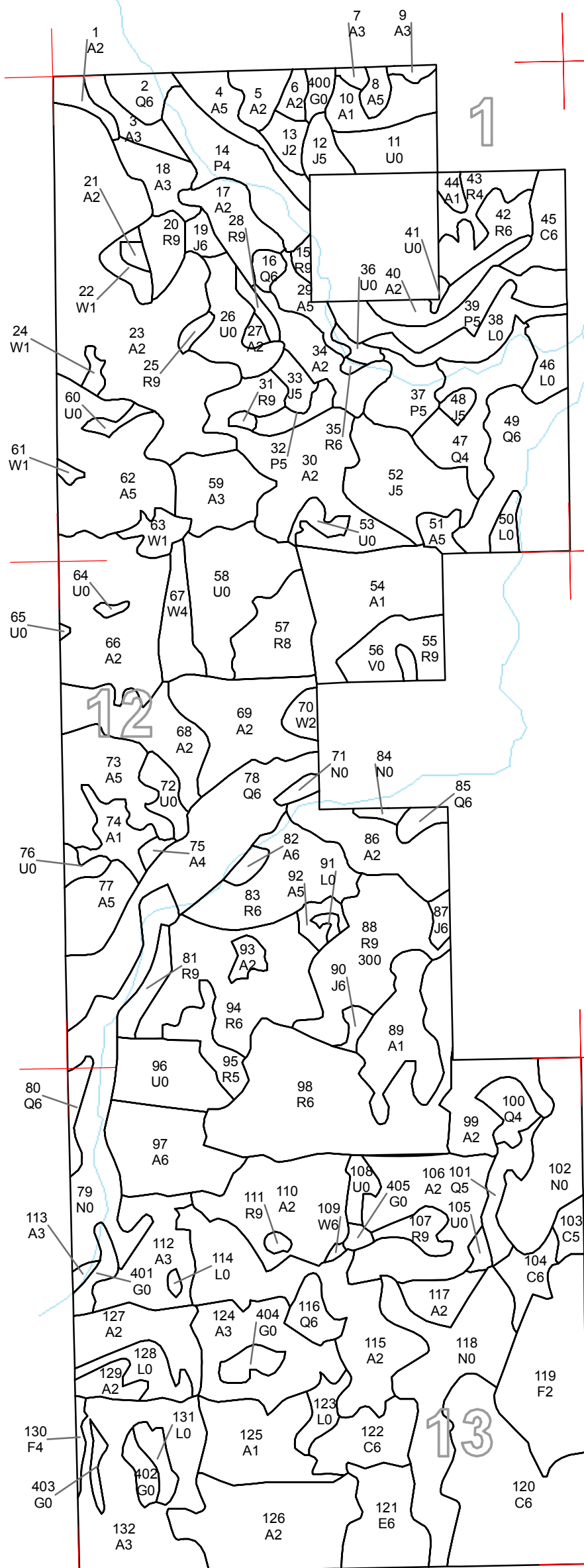


# Dedicated & Proposed Special Conservation Area Map

Compartment 49  
 T33N, R01W, Sec. 1, 12, 13  
 County: Otsego  
 Unit: Pigeon River  
 YOE: 2003  
 Acres: 1,625 GIS Calculated  
 Stand Examiner: Don Mittlestat  
 Map Revised: 6/26/2008  
 Map Phase: Pre-review



- Legend**
- Miris Corners
  - Campgrounds
  - Cold Water Streams
  - Stand Boundary
  - Cold Water Lakes
  - OI Special Conservation Areas
  - Potential Old Growth Stands





**DEDICATED CONSERVATION AREA DETAILS**

\* This is a list of Dedicated Biodiversity Areas for this compartment along with a 1/4 mile buffer surrounding the compartment. Refer to Dedicated Conservation Area Map for areas that the below listed Conservation Areas are located.

ERA = Ecological Reference Area  
 HCVA = High Conservation Value Area  
 SCA = Special Conservation Area

Conservation Area	Type	Description
SCA	Cold Water Stream	A coldwater stream has temperature and dissolved oxygen conditions that allow naturally-reproduced or stocked trout populations and those of other coldwater fish species (e.g., slimy sculpin) to persist from year to year. Coldwater streams in Michigan typically provide these conditions due to substantial contributions of groundwater to their stream flows. Such streams are established by Director's action and designated as trout resources by Fisheries Order 210.