



**GWINN FOREST MANAGEMENT UNIT  
COMPARTMENT REVIEW PRESENTATION**

**COMPARTMENT # 297    ENTRY YEAR: 2010**

**Compartment Acreage: 202            County: Marquette**

---

**Revision Date: August 25, 2008**

**Stand Examiner: Dean Wilson**

**Legal Description: T48N-R22W, section 35.**

**RMU (if applicable):**

**Management Goals: Habitat/vegetation and mixed use.**

**Soil and Topography:** Soils range from poorly drained loams to dry course sands, to organic mucks and peats. Topography is mostly level with some slight hills.

**Ownership Patterns, Development, and Land Use in and Around the Compartment: This compartment is surrounded by private ownerships. Land use is primarily for forest production and passive recreation.**

**Unique, Natural Features (include only non-site specific and non-sensitive information):** The Laughing Whitefish River, a well known trout fishery, flows through the length of this compartment. Wet land habitats are diverse in this tract.

**Archeological, Historical, and Cultural Features (include only non-site specific and non-sensitive information):** The abandoned town of Tyoga, one of the original white pine logging communities dating back to 1906, is contained in this compartment. The town site with its associated sawmill and logging camp have been developed as a historical interpretation facility. The Tyoga trail with interpretive stations is developed to review the history of the area.

**Special Management Designations or Considerations:** The entire compartment is designated Special Conservation Area to preserve its historic values.

**Watershed and Fisheries Considerations:** The Laughing Whitefish River.

**Wildlife Habitat Considerations:** Sand River Lake Plain. Special Conservation Areas to protect historic element of compartment as well as deer wintering complex, including riparian areas along Laughing Whitefish River. Variety of covertypes adjacent to Lake Superior Shoreline offers habitat for many wildlife species. Maintained trail through the historic Tioga Logging Camp provides opportunities for wildlife viewing.

**Mineral Resource and Development Concerns and/or Restrictions:** Surface sediments consist of thin to discontinuous glacial till over bedrock. The glacial drift thickness varies between 10 and 50 feet. The Precambrian Jacobsville Sandstone subcrops below the glacial drift. This rock was previously used as a building stone. A gravel pit is located one mile to the southwest and there may be some potential.

Abandoned iron mines are located eighteen miles to the southwest. This Compartment has never been previously leased for metallic exploration. There is no economic oil and gas production in the UP.

**Vehicle Access:** Is good to this compartment but limited internally.

**Survey Needs:** None.

**Recreational Facilities and Opportunities:** The Tyoga Trail, a historical interpretation pathway, is located here. A rustic boat launch is maintained for access to the river and Lake Superior.

**Fire Protection:** Mostly non risk forest types.

**Additional Compartment Information:** Tyoga trail is maintained by private interests.

- **The following 5 reports from the Operations Inventory System (OIPC) are attached:**
  - ◆ **Cover Type by Age Class**
  - ◆ **Cover Type by Management Objective**
  - ◆ **Compartment Volume Summary**
  - ◆ **Proposed Treatments – No Limiting Factors**
  - ◆ **Proposed Treatments – With Limiting Factors**
  
- **The following information is displayed, where pertinent, on the attached compartment maps:**
  - ◆ **Base feature information, stand numbers, cover types**
  - ◆ **Proposed treatments**
  - ◆ **Proposed road access system**
  - ◆ **Suggested potential old growth**

9/23/2008 12:53:16 PM

Michigan Department of Natural Resources - Operations Inventory System  
Individual Compartment Report

ESCANABA RIVER STATE FOREST

GWINN FOREST MGT UNIT

MARQUETTE COUNTY

COMPARTMENT: 297

Table 3

(acres shown in boxes)

STAND AGE CLASS

COVER TYPE	Not Coded	STAND AGE CLASS															All Aged	Total		
		0-9	10-19	20-29	30-39	40-49	50-59	60-69	70-79	80-89	90-99	100-109	110-119	120-129	130-139	140-149			150-159	
Cedar												4		45						49
Hemlock																			9	9
Lowlnd Brush	6																		1	7
Paper Birch										19										19
Spruce Fir									21										5	26
Swamp Hrdwds																			52	52
Tamarack																			1	1
Upland Hdwds																			35	35
Water	1																			1
White Pine									3											3
<b>Total</b>	<b>7</b>								<b>24</b>	<b>19</b>		<b>4</b>		<b>45</b>					<b>103</b>	<b>202</b>

9/23/2008 12:53:21 PM

Michigan Department of Natural Resources - Operations Inventory System  
Individual Compartment Report

ESCANABA RIVER STATE FOREST

GWINN FOREST MGT UNIT

MARQUETTE COUNTY

COMPARTMENT: 297

Table 3A

(acres shown in boxes)

MANAGEMENT OBJECTIVE TYPE

COVER TYPE	A	S	V	C	G	H	J	I	L	P	N	Q	X	O	B	R	K	Y	F	E	T	D	U	M	Z	W	Total
C Cedar				49																							49
H Hemlock						9																					9
L Lowlnd Brush									7																		7
B Paper Birch															19												19
F Spruce Fir																			26								26
E Swamp Hrdwds																				52							52
T Tamarack																					1						1
M Upland Hdwds																								35			35
Z Water																									1		1
W White Pine																										3	3
Total				49		9			7						19				26	52	1			35	1	3	202

ESCANABA RIVER STATE FOREST

GWINN FOREST MGT UNIT

MARQUETTE COUNTY

COMPARTMENT: **297**

**Table 10 - COMPARTMENT VOLUME SUMMARY - ALL STANDS**

COMPARTMENT SUMMARY	
TOTAL VOLUME	CUT VOLUME
Hardwood 826 Cds	
Hardwood 449 Mbf	
Softwood 1070 Cds	
Softwood 453 Mbf	
Sum TotVol 3700 Cds	
<b>Total Cmpnt Acres</b>	Acres Proposed For Cut..... 0
202	

**Proposed Treatments  
With NO Limiting Factors**

**Compartment: 297**

**Entry Year: 2010**

<b>Stand</b>	<b>Cover Type</b>	<b>Acres</b>	<b>Age</b>	<b>Site Index</b>	<b>Mgt Obj</b>	<b>Condition</b>	<b>Method Cut</b>	<b>Harvest Priority</b>	<b>Cultural Need</b>	<b>FDI Status</b>
--------------	-----------------------	--------------	------------	-----------------------	--------------------	------------------	-----------------------	-----------------------------	--------------------------	-----------------------

**Total Acres..... 0**

**Proposed Treatments  
With Limiting Factors**

**Compartment: 297**

**Entry Year:2010**

---

<b>Stand</b>	<b>Cover Type</b>	<b>Acres</b>	<b>Age</b>	<b>Site Index</b>	<b>Mgt Obj</b>	<b>Condition</b>	<b>Method Cut</b>	<b>Harvest Priority</b>	<b>Cultural Need</b>	<b>FD Status</b>
--------------	-----------------------	--------------	------------	-----------------------	--------------------	------------------	-----------------------	-----------------------------	--------------------------	----------------------

---

TREATMENT LIMITING FACTORS:

---

**Total Acres..... 0**



Compartment 297  
T48N, R22W, Sec. 35  
County: Alger  
Unit: Gwinn  
YOE: 2010  
Acres: 202 GIS Calculated  
Stand Examiner: Dean Wilson  
Map Revised: 08/29/2008  
Map Phase: Pre-review

# Stand Boundary Map

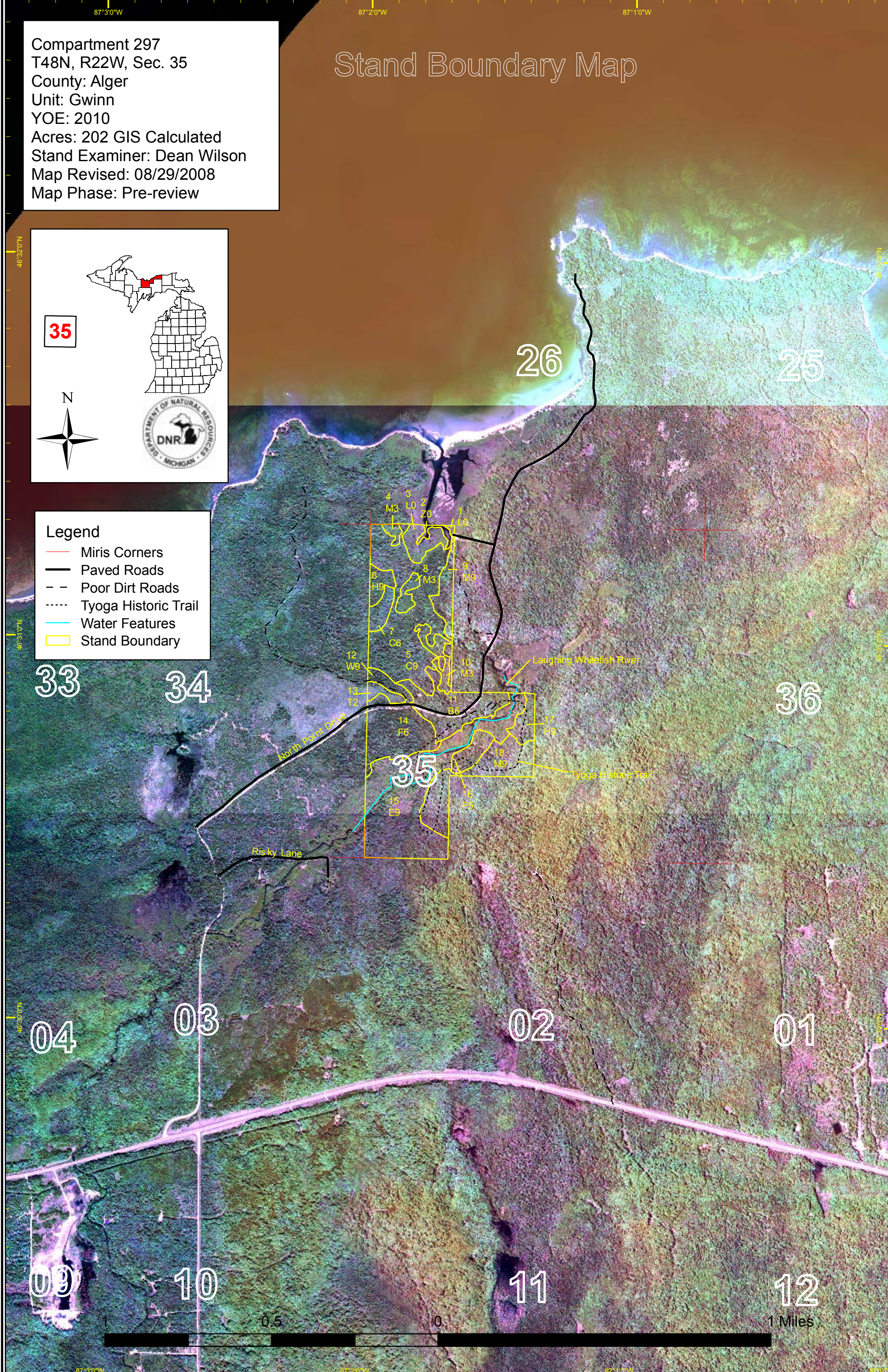
35

N

DNR  
DEPARTMENT OF NATURAL RESOURCES  
MICHIGAN

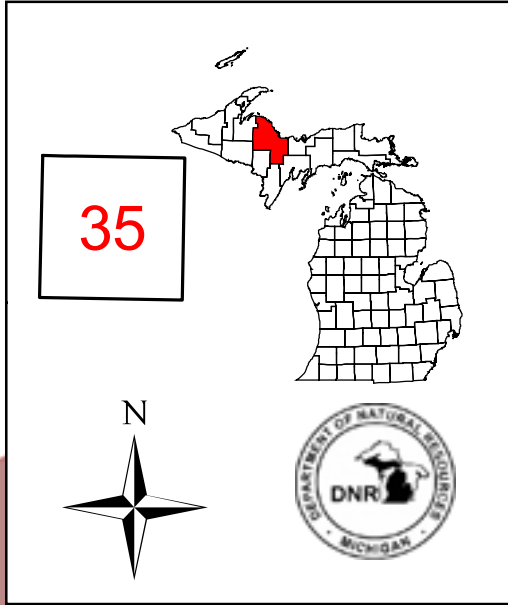
**Legend**

- Miris Corners
- Paved Roads
- Poor Dirt Roads
- Tyoga Historic Trail
- Water Features
- Stand Boundary

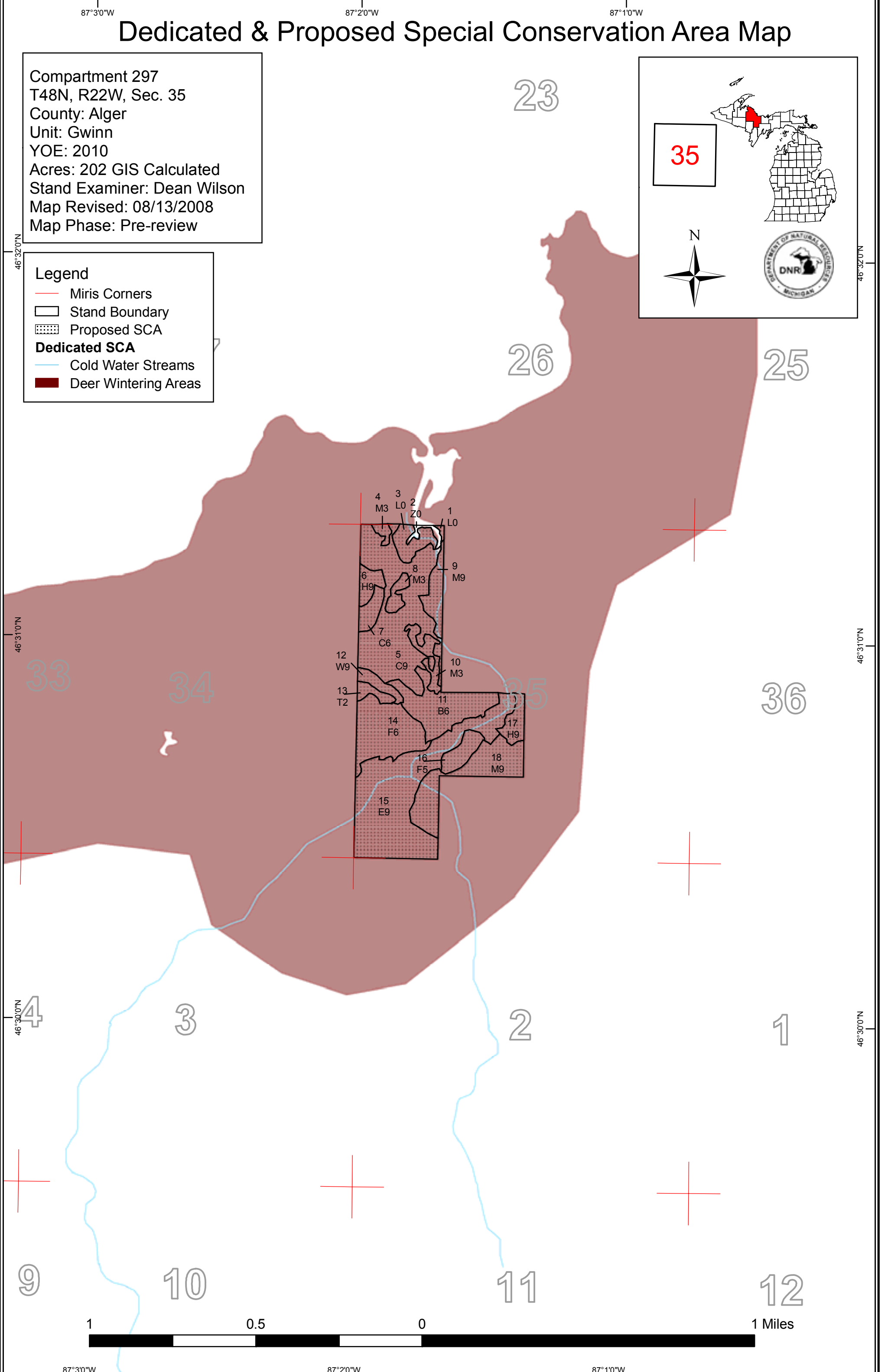


# Dedicated & Proposed Special Conservation Area Map

Compartment 297  
 T48N, R22W, Sec. 35  
 County: Alger  
 Unit: Gwinn  
 YOE: 2010  
 Acres: 202 GIS Calculated  
 Stand Examiner: Dean Wilson  
 Map Revised: 08/13/2008  
 Map Phase: Pre-review



- Legend**
- Miris Corners
  - Stand Boundary
  - Proposed SCA
  - Dedicated SCA**
  - Cold Water Streams
  - Deer Wintering Areas



1 0.5 0 1 Miles

87°30'W 87°20'W 87°10'W

46°32'0"N

46°32'0"N

46°31'0"N

46°31'0"N

46°30'0"N

46°30'0"N



**DEDICATED CONSERVATION AREA DETAILS**

\* This is a list of Dedicated Biodiversity Areas for this compartment along with a 1/4 mile buffer surrounding the compartment. Refer to Dedicated Conservation Area Map for areas that the below listed Conservation Areas are located.

ERA = Ecological Reference Area  
 HCVA = High Conservation Value Area  
 SCA = Special Conservation Area

Conservation Area	Type	Description
SCA	Archaeological Site	An aquatic or terrestrial area of the State that contains physical remains of human occupation. These are sites of cultural and historical significance that may occur upon terrestrial areas and Great Lakes bottomlands. They include thousands of Native American settlements and burial sites, as well as French and British outposts, nineteenth century logging camps, mines and homesteads. Beneath the waters of the Great Lakes, there are shipwrecks and other remains documenting the maritime trade. Such sites may be identified by Natural heritage data from the State Historic Preservation Office. Proposed treatments in this compartment will be implemented in such a manner as to maintain the integrity of these sites. Due to the sensitive nature of this information, no further detail about location is available.
SCA	Cold Water Stream	A coldwater stream has temperature and dissolved oxygen conditions that allow naturally-reproduced or stocked trout populations and those of other coldwater fish species (e.g., slimy sculpin) to persist from year to year. Coldwater streams in Michigan typically provide these conditions due to substantial contributions of groundwater to their stream flows. Such streams are established by Director's action and designated as trout resources by Fisheries Order 210.
SCA	Habitat Area	An area that provide some specific need for the life cycle of wildlife species, including State Wildlife Areas and Waterfowl Production Areas, deer wintering complexes in lowland conifer communities, grassland openings and savannas. Habitat areas are distinct from critical habitat designated for recovery of endangered or threatened species (such as Kirtland's warbler or piping plover areas) in that they are more general in nature, are not primarily associated with threatened or endangered species, and are not covered by species recovery plans that are developed in cooperation with Federal agencies.