



**GWINN FOREST MANAGEMENT UNIT  
COMPARTMENT REVIEW PRESENTATION**

**COMPARTMENT # 267    ENTRY YEAR: 2010**  
Compartment Acreage: 851                      County: Marquette

---

**Revision Date:** August 28, 2008.

**Stand Examiner:** Dean Wilson

**Legal Description:** T45N-R27W, sections 8, 16, 17, and 18.

**RMU (if applicable):**

**Management Goals:** Habitat/vegetation and mixed use.

**Soil and Topography:** Soils range from loamy sands to coarse sands, to organic mucks and peats. Topography is fairly level to rolling.

**Ownership Patterns, Development, and Land Use in and Around the Compartment:** Some state ownership on the south side. Mostly surrounded by non-industrial private landowners. Land use is primarily for forest production and passive recreation.

**Unique, Natural Features (include only non-site specific and non-sensitive information):** The Bryan Creek flows through this area.

**Archeological, Historical, and Cultural Features (include only non-site specific and non-sensitive information):** Nothing significant noted.

**Special Management Designations or Considerations:** Management operations will be designed to protect drainage ways and maintain diversity. Stand 16 is designated as a special conservation area

**Watershed and Fisheries Considerations:** The Bryan Creek is buffered by special conservation value designations.

**Wildlife Habitat Considerations:** Special Conservation Areas along Bryan Creek to maintain wildlife corridor and protect riparian areas. Strive for best possible age class distribution in aspen habitat. Utilize treatments that mimic natural fire disturbance in jack pine habitat. Try to maintain or increase oak cover and hard mast production.

**Mineral Resource and Development Concerns and/or Restrictions:** Surface sediments consist of coarse-textured glacial till. The glacial drift thickness varies between 50 and 100 feet. The Precambrian Archean Granite/Gneiss subcrops below the glacial drift. This rock could be used as dimension stone. Gravel pits are located in the area, but there should be potential. Abandoned iron mines are located ten miles to the northeast. There were previous metallic leases just to the northeast. There is no economic oil and gas production in the UP.

**Vehicle Access:** Is good to this compartment but limited internally.

**Survey Needs:** None.

**Recreational Facilities and Opportunities:** There are no developed recreational opportunities in this compartment. Passive recreational use is heavy.

**Fire Protection:** This compartment has a significant amount jack pine habitat type. Consequently, the fire risk is high.

**Additional Compartment Information:**

- **The following 5 reports from the Operations Inventory System (OIPC) are attached:**
  - ◆ **Cover Type by Age Class**
  - ◆ **Cover Type by Management Objective**
  - ◆ **Compartment Volume Summary**
  - ◆ **Proposed Treatments – No Limiting Factors**
  - ◆ **Proposed Treatments – With Limiting Factors**
  
- **The following information is displayed, where pertinent, on the attached compartment maps:**
  - ◆ **Base feature information, stand numbers, cover types**
  - ◆ **Proposed treatments**
  - ◆ **Proposed road access system**
  - ◆ **Suggested potential old growth**





ESCANABA RIVER STATE FOREST

GWINN FOREST MGT UNIT

MARQUETTE COUNTY

COMPARTMENT: **267**

**Table 10 - COMPARTMENT VOLUME SUMMARY - ALL STANDS**

COMPARTMENT SUMMARY			
TOTAL VOLUME		CUT VOLUME	
Hardwood	1834 Cds	Softwood	2678 Cds
Softwood	5231 Cds	Sum CutVol	2678 Cds
Softwood	55 Mbf		
Sum TotVol	7175 Cds		
<b>Total Cmpt Acres</b>		Acres Proposed For Cut.....	93
	851		

**GWINN FOREST MGT UNIT**

**Proposed Treatments  
With NO Limiting Factors**

**Compartment: 267 Entry Year: 2010**

Stand	Cover Type	Acres	Age	Site Index	Mgt Obj	Condition	Method Cut	Harvest Priority	Cultural Need	FDF Status
5	J6	93	64	60	jack pine	mature	final harvest	1	direct seeding	
<p>comnts Fmd : SPOTS OF A3. MOSTLY JP. CUT IN 76 UNDER PERMIT #21-73A(CUT MOSTLY A) Harvest history has created a patchy aspen understory in some places.</p> <p>Wld : After harvest, combine regeneration efforts with Stand #6 to south in order to incorporate both stands into one which will increase overall influence of core area jack pine for wildlife species that utilize this cover-type.</p>										
6	J1	38	7	62	jack pine	immature		0	planting	
<p>comnts Fmd : Cut in July 2001: TS# 123-99-01, "Bryan Creek Northwest Sale". Oak, cherry, red &amp; white pine , and all birch were left. FTP #C31-431 was written on 10/16/01 to cover site prep &amp; seeding jack pine. Reforestation effort has failed probably due to heavy bracken fern ground cover. This stand will be reforested with stand 5 when it is cut.</p> <p>Wld : Combine regeneration efforts with Stand #5 to the north in order to incorporate both stand into one and increase overall core area of jack pine for wildlife species that utilize this cover-type.</p>										
<b>Total Acres.....</b>		<b>131</b>								

**Proposed Treatments  
With Limiting Factors**

**Compartment: 267**

**Entry Year: 2010**

---

<b>Stand</b>	<b>Cover Type</b>	<b>Acres</b>	<b>Age</b>	<b>Site Index</b>	<b>Mgt Obj</b>	<b>Condition</b>	<b>Method Cut</b>	<b>Harvest Priority</b>	<b>Cultural Need</b>	<b>FD Status</b>
--------------	-----------------------	--------------	------------	-----------------------	--------------------	------------------	-----------------------	-----------------------------	--------------------------	----------------------

---

TREATMENT LIMITING FACTORS:

---

**Total Acres..... 0**

# Cover Type and Treatment

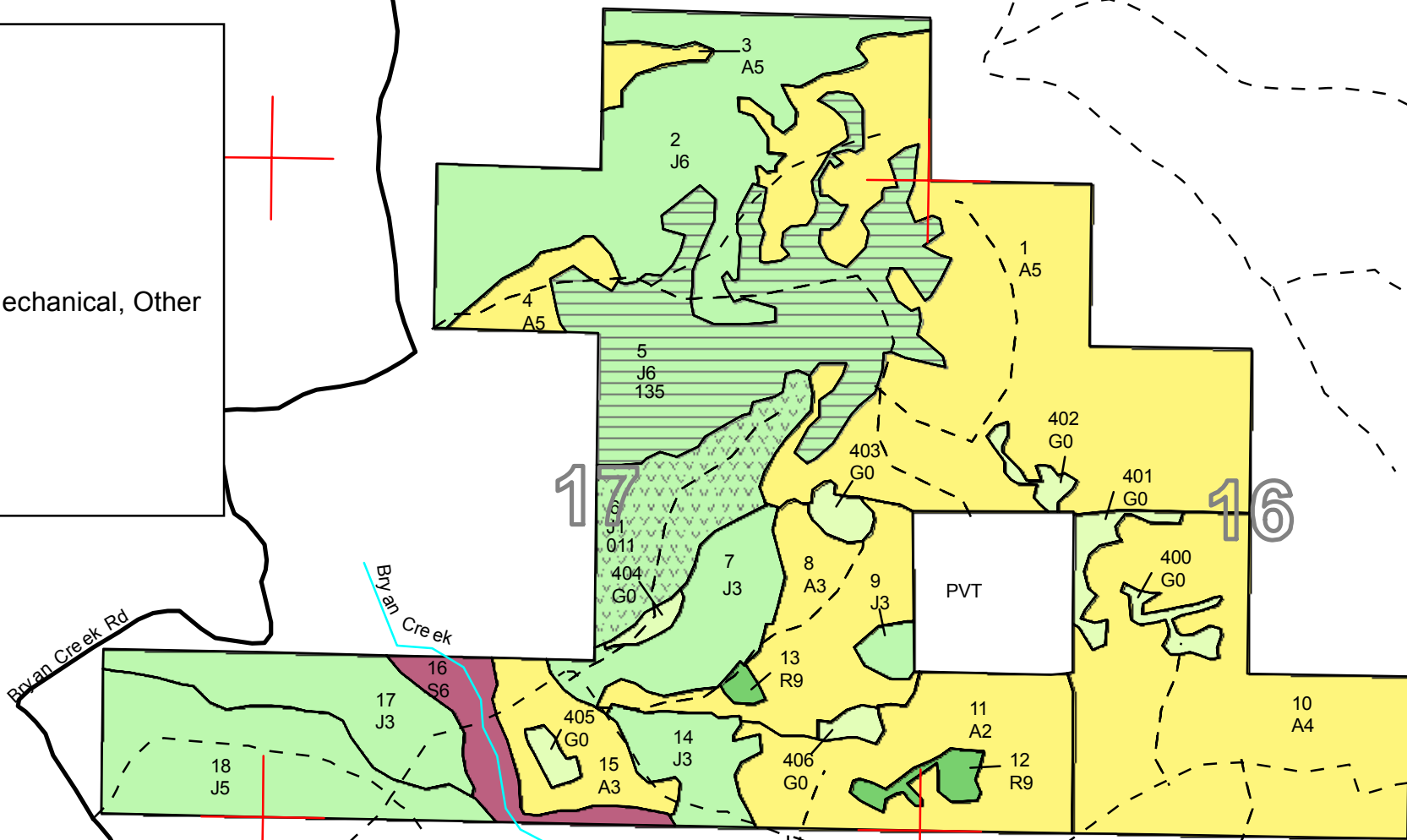
Compartment 267  
 T45N, R27W, Sec. 16, 17, 18  
 County: Marquette  
 Unit: Gwinn  
 YOE: 2010  
 Acres: 851 GIS Calculated  
 Stand Examiner: Dean Wilson  
 Map Revised: 8/06/2008  
 Map Phase: Pre-review

**Legend**

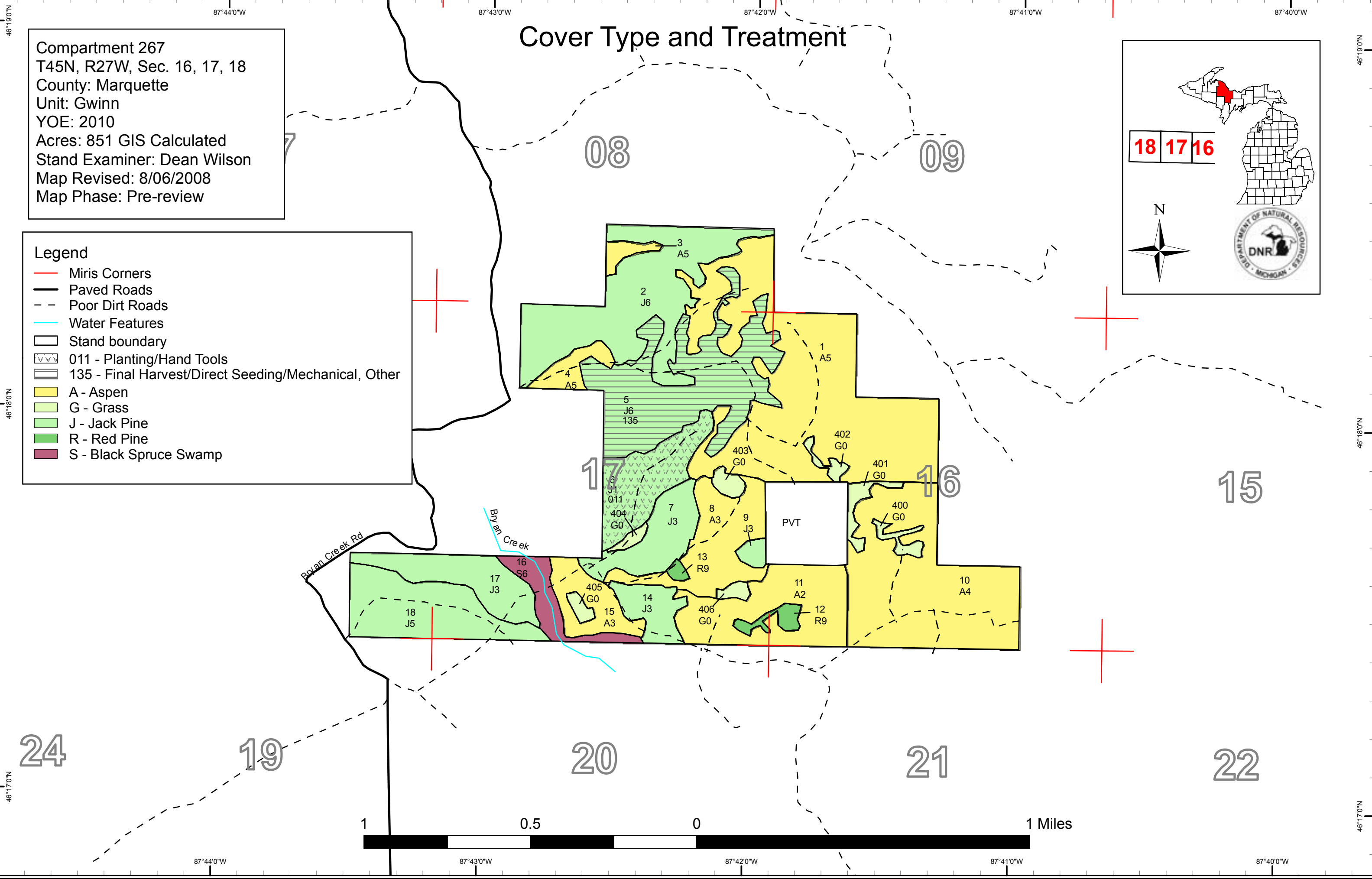
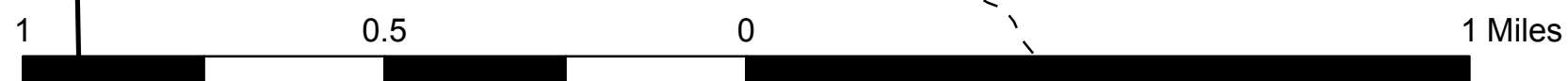
- Miris Corners
- Paved Roads
- - - Poor Dirt Roads
- Water Features
- Stand boundary
- 011 - Planting/Hand Tools
- 135 - Final Harvest/Direct Seeding/Mechanical, Other
- A - Aspen
- G - Grass
- J - Jack Pine
- R - Red Pine
- S - Black Spruce Swamp

18 17 16

N



24 19 20 21 22



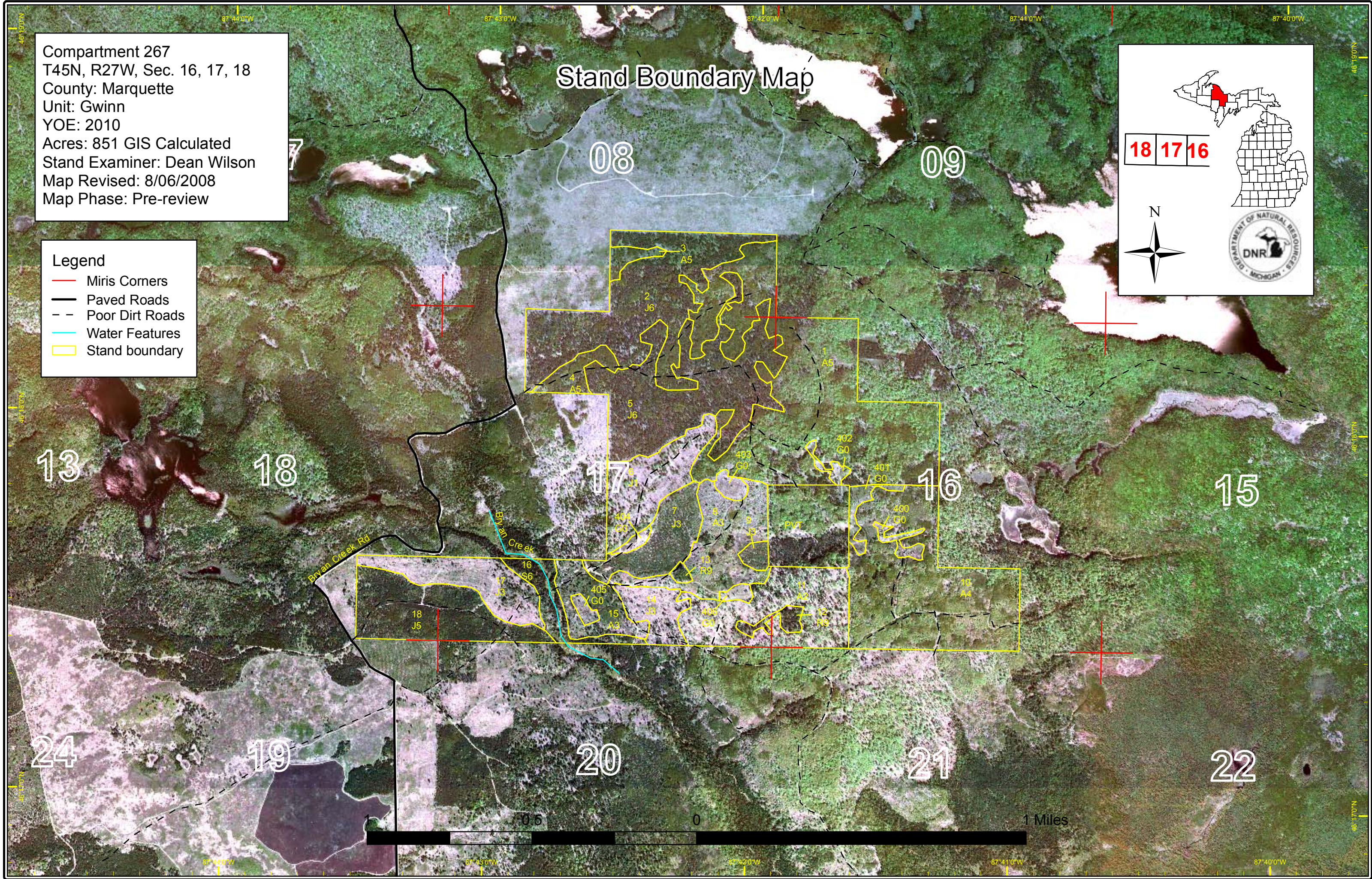
Compartment 267  
 T45N, R27W, Sec. 16, 17, 18  
 County: Marquette  
 Unit: Gwinn  
 YOE: 2010  
 Acres: 851 GIS Calculated  
 Stand Examiner: Dean Wilson  
 Map Revised: 8/06/2008  
 Map Phase: Pre-review

# Stand Boundary Map

18 17 16  
 N  
 DEPARTMENT OF NATURAL RESOURCES  
 DNR  
 MICHIGAN

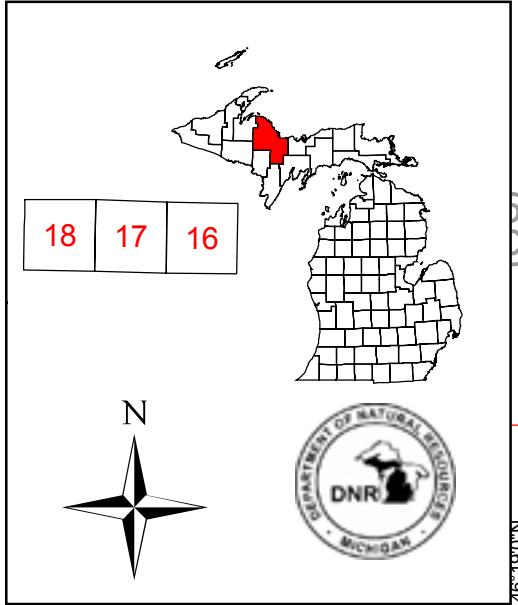
**Legend**

- Miris Corners
- Paved Roads
- - Poor Dirt Roads
- Water Features
- Stand boundary



# Dedicated & Proposed Special Conservation Area Map

Compartment 267  
 T45N, R27W, Sec. 16, 17, 18  
 County: Marquette  
 Unit: Gwinn  
 YOE: 2010  
 Acres: 851 GIS Calculated  
 Stand Examiner: Dean Wilson  
 Map Revised: 8/06/2008  
 Map Phase: Pre-review

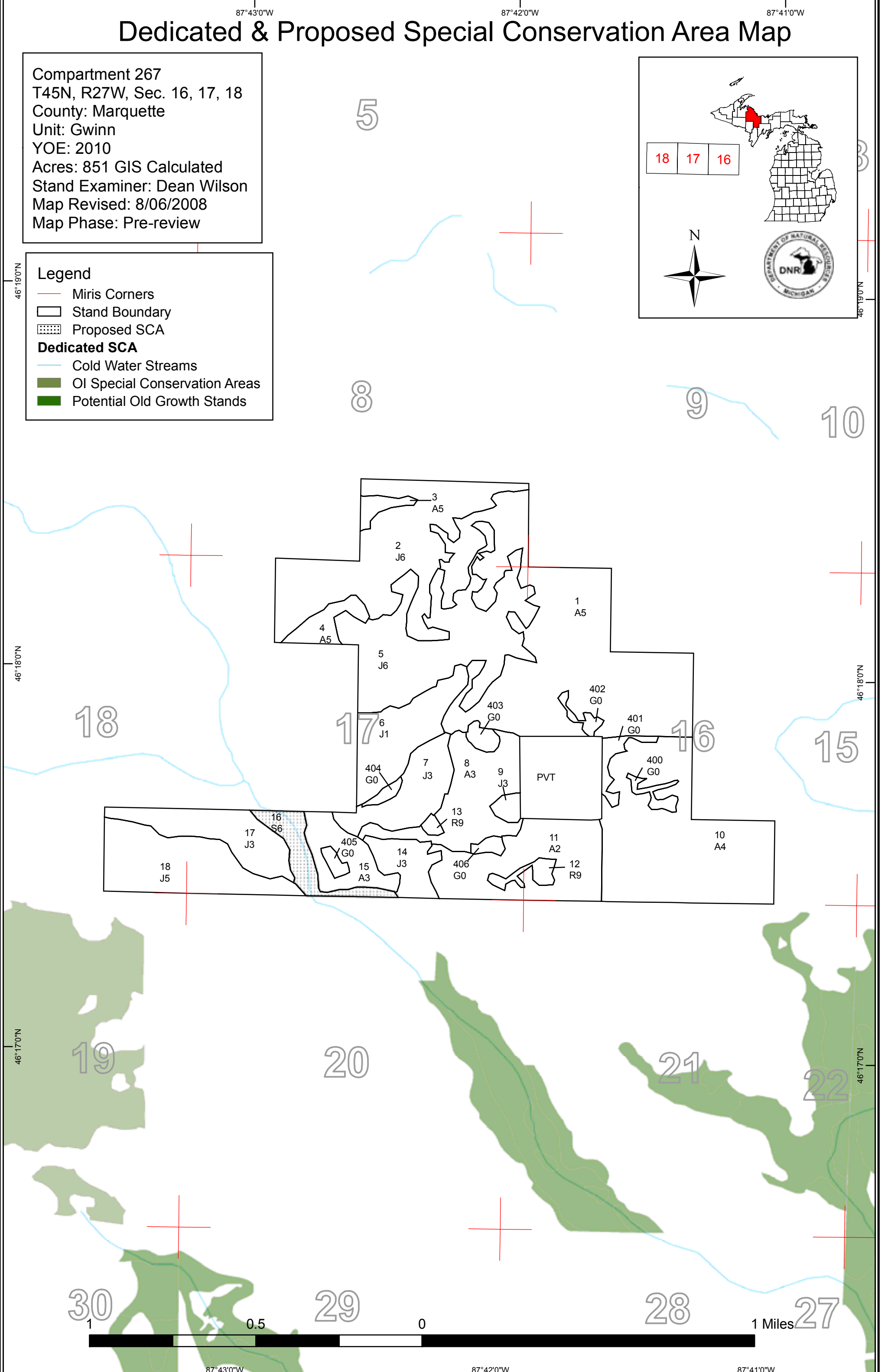


**Legend**

- Miris Corners
- Stand Boundary
- Proposed SCA

**Dedicated SCA**

- Cold Water Streams
- OI Special Conservation Areas
- Potential Old Growth Stands



87°43'0"W                      87°42'0"W                      87°41'0"W

46°19'0"N

46°18'0"N

46°17'0"N

46°19'0"N

46°18'0"N

46°17'0"N



**DEDICATED CONSERVATION AREA DETAILS**

\* This is a list of Dedicated Biodiversity Areas for this compartment along with a 1/4 mile buffer surrounding the compartment. Refer to Dedicated Conservation Area Map for areas that the below listed Conservation Areas are located.

ERA = Ecological Reference Area  
 HCVA = High Conservation Value Area  
 SCA = Special Conservation Area

Conservation Area	Type	Description
SCA	Cold Water Stream	A coldwater stream has temperature and dissolved oxygen conditions that allow naturally-reproduced or stocked trout populations and those of other coldwater fish species (e.g., slimy sculpin) to persist from year to year. Coldwater streams in Michigan typically provide these conditions due to substantial contributions of groundwater to their stream flows. Such streams are established by Director's action and designated as trout resources by Fisheries Order 210.
SCA	Potential Old Growth Areas	This category contains stands were identified for a broad range of reasons and were coded in the OI database as stand condition 8 as potential old growth (POG). Approximately 310,000 acres have been identified through the Operations Inventory (OI)/Compartment Review process. For stands in Year of Entry 2008 and forward, potential old growth is managed for the identified objective until it is: 1) vetted through the Biodiversity Conservation Planning Process (BCPP) and given a specific designation and objective (as an ERA, HCVA, or other type of SCA) and is released from the potential old growth designation; or 2) it is released from the potential old growth designation via the Compartment Review process.