



**GWINN FOREST MANAGEMENT UNIT
COMPARTMENT REVIEW PRESENTATION**

COMPARTMENT # 257 ENTRY YEAR: 2010
Compartment Acreage: 1217 County: Marquette

Revision Date: August 28, 2008

Stand Examiner: Dean Wilson

Legal Description: T45N-R27W, sections 3 and 4.

RMU (if applicable):

Management Goals: Habitat/vegetation and mixed use.

Soil and Topography: Soils range from poorly drained loamy sands to dry course sands, to organic mucks and peats. Topography ranges from level to moderately hilly.

Ownership Patterns, Development, and Land Use in and Around the Compartment: State ownership on the north and east sides. Other sides are bounded by non-industrial private landowners. Land use is primarily for forest production, active and passive recreation.

Unique, Natural Features (include only non-site specific and non-sensitive information): Three small lakes (Hemmings Lake, Frenchman's Pond, and one not named) that form the headwaters to, and are connected by the Flopper Creek occur on the north edge of this compartment. Wet land habitats are diverse in this tract.

Archeological, Historical, and Cultural Features (include only non-site specific and non-sensitive information): Nothing significant noted.

Special Management Designations or Considerations: Management operations will be designed to protect drainage ways and maintain diversity. Designated as special conservation areas are stands 1, 2, 5, 6, 10, 11, 15, and 16. Stand 6 is a new designation.

Watershed and Fisheries Considerations: The three small lakes and the Flopper Creek are buffered with special conservation area designations.

Wildlife Habitat Considerations: Chain Lakes Moraine. Special Conservation Areas along Flopper's Creek to protect wildlife corridors and riparian areas. Strive to increase or maintain oak cover-type and hard mast production. Try to maintain the best possible age class distribution in aspen habitat. Increase diversity in hardwood stands through treatments that encourage conifer components such as white pine, red pine, and spruce.

Mineral Resource and Development Concerns and/or Restrictions: Surface sediments consist of coarse-textured till. The glacial drift thickness varies between 50 and 100 feet. The Precambrian Archean Granite/Gneiss subcrops below the glacial drift. This rock could be used as a dimension stone. Gravel pits are not located in the area, but there should be potential. The abandoned Republic iron mine is located ten

miles to the northwest. This area has not been leased previously for metallic exploration. There is no economic oil and gas production in the UP.

Vehicle Access: Is good to and around this compartment.

Survey Needs: None.

Recreational Facilities and Opportunities: There are no developed recreational opportunities in this compartment. Passive recreational use of this area is heavy.

Fire Protection: With drier sandy soils, wildfire potential is good for this area.

Additional Compartment Information: The state constructed and maintained Hemmings Lake Road runs through this compartment.

- **The following 5 reports from the Operations Inventory System (OIPC) are attached:**
 - ◆ **Cover Type by Age Class**
 - ◆ **Cover Type by Management Objective**
 - ◆ **Compartment Volume Summary**
 - ◆ **Proposed Treatments – No Limiting Factors**
 - ◆ **Proposed Treatments – With Limiting Factors**

- **The following information is displayed, where pertinent, on the attached compartment maps:**
 - ◆ **Base feature information, stand numbers, cover types**
 - ◆ **Proposed treatments**
 - ◆ **Proposed road access system**
 - ◆ **Suggested potential old growth**

9/24/2008 8:19:53 AM

Michigan Department of Natural Resources - Operations Inventory System
Individual Compartment Report

ESCANABA RIVER STATE FOREST

GWINN FOREST MGT UNIT

MARQUETTE COUNTY

COMPARTMENT: 257

Table 3

(acres shown in boxes)

STAND AGE CLASS

COVER TYPE	Not Coded	0-9	10-19	20-29	30-39	40-49	50-59	60-69	70-79	80-89	90-99	100-109	110-119	120-129	130-139	140-149	150-159	All Aged	Total
Aspen		120	325	177						94									716
Black Spruce								6										23	29
Bog or Marsh	6																		6
Grass	2		22																24
Jack Pine										10									10
Marsh	12																		12
Mx Swmp Cnfr																		32	32
Oak										19								82	101
Red Pine							106			13								114	233
Treed Bog	6																		6
Water	31																		31
White Pine																		17	17
Total	57	120	347	177			106	6		136								268	1217

9/24/2008 8:20:04 AM

Michigan Department of Natural Resources - Operations Inventory System
Individual Compartment Report

ESCANABA RIVER STATE FOREST

GWINN FOREST MGT UNIT

MARQUETTE COUNTY

COMPARTMENT: 257

Table 3A

(acres shown in boxes)

MANAGEMENT OBJECTIVE TYPE

COVER TYPE	A	S	V	C	G	H	J	I	L	P	N	Q	X	O	B	R	K	Y	F	E	T	D	U	M	Z	W	Total	
A Aspen	716																										716	
S Black Spruce		29																										29
V Bog or Marsh			6																									6
G Grass					24																							24
J Jack Pine							10																					10
N Marsh											12																	12
Q Mx Swmp Cnfr												32																32
O Oak														101														101
R Red Pine																233												233
D Treed Bog																						6						6
Z Water																									31			31
W White Pine																										17		17
Total	716	29	6		24		10				12	32		101		233						6			31	17	1217	

ESCANABA RIVER STATE FOREST

GWINN FOREST MGT UNIT

MARQUETTE COUNTY

COMPARTMENT: **257**

Table 10 - COMPARTMENT VOLUME SUMMARY - ALL STANDS

COMPARTMENT SUMMARY			
TOTAL VOLUME		CUT VOLUME	
Hardwood	4888 Cds	Hardwood	2243 Cds
Hardwood	280 Mbf	Softwood	140 Cds
Softwood	3327 Cds	Softwood	11 Mbf
Softwood	849 Mbf	Sum CutVol	2405 Cds
Sum TotVol	10473 Cds		
Total Cmpnt Acres		Acres Proposed For Cut.....	88
	1217		

GWINN FOREST MGT UNIT

**Proposed Treatments
With NO Limiting Factors**

Compartment: 257 **Entry Year: 2010**

Stand	Cover Type	Acres	Age	Site Index	Mgt Obj	Condition	Method Cut	Harvest Priority	Cultural Need	FDF Status	
3	A6	17	86	60	aspen (upland)	mature	final harvest	6			
comnts Fmd : Currently under contract-TS#114-07-01: North Flopper Sale. A significant buffer was left along creek which will become a separate stand upon sale completion. Cut with timber to the north when that compartment is entered in 2007.											
Wld : Cut no oak, white pine, or red pine.											
17	O6	19	86	60	oak	mature	shelterwood-seed	1			
comnts Fmd : Stand contains pockets of aspen and overstocked oak. Should thin overstocked oak pockets to improve tree health and allow for crown expansion. Retain all large pines and oak.											
Wld : Cut no red pine, white pine, or oak.											
36	A6	42	86	65	aspen (upland)	mature	final harvest	1			
comnts Fmd : Retain all large pines and oak.											
37	J6	10	86	70	jack pine	mature	final harvest	1	direct seeding		
comnts Fmd : Retain all large pines and oak.											
Total Acres.....		88									

**Proposed Treatments
With Limiting Factors**

Compartment: 257 Entry Year:2010

Stand	Cover Type	Acres	Age	Site Index	Mgt Obj	Condition	Method Cut	Harvest Priority	Cultural Need	FD Status
--------------	-----------------------	--------------	------------	-----------------------	--------------------	------------------	-----------------------	-----------------------------	--------------------------	----------------------

TREATMENT LIMITING FACTORS:

Total Acres..... 0

20

21 Cover Type and Treatment

23

Compartment 257
 T45N, R27W, Sec. 3, 4
 County: Marquette
 Unit: Gwinn
 YOY: 2010
 Acres: 1,217 GIS Calculated
 Stand Examiner: Dean Wilson
 Map Revised: 09/02/2008
 Map Phase: Pre-review

Legend

- Miris Corners
- Paved Roads
- Poor Dirt Road
- Water Features
- Stand Boundary
- 100 - Final Harvest
- 136 - Final Harvest/Direct Seeding
- 300 - Shelterwood - Seed
- A - Aspen
- D - Treed Bog
- G - Grass
- J - Jack Pine
- N - Marsh
- O - Oak
- Q - Mixed Swamp Conifers
- R - Red Pine
- S - Black Spruce Swamp
- V - Bog or Muskeg
- W - White Pine
- Z - Water

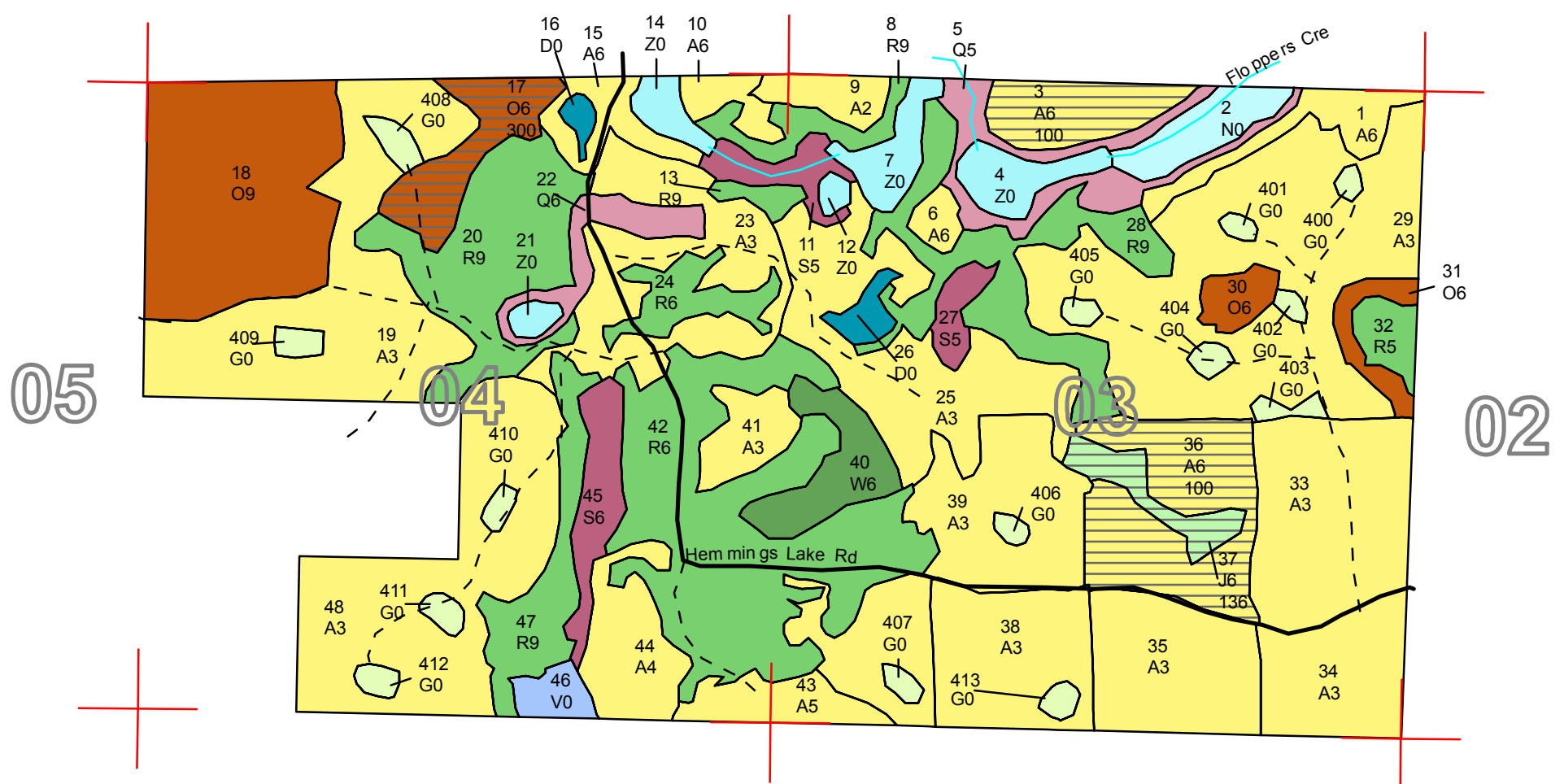
04 03

28

33

34

35



05

04

03

02

08

09

10

11



87°42'0"W 87°41'0"W 87°40'0"W 87°39'0"W

Stand Boundary Map

Compartment 257
T45N, R27W, Sec. 3, 4
County: Marquette
Unit: Gwinn
YOE: 2010
Acres: 1,217 GIS Calculated
Stand Examiner: Dean Wilson
Map Revised: 09/02/2008
Map Phase: Pre-review

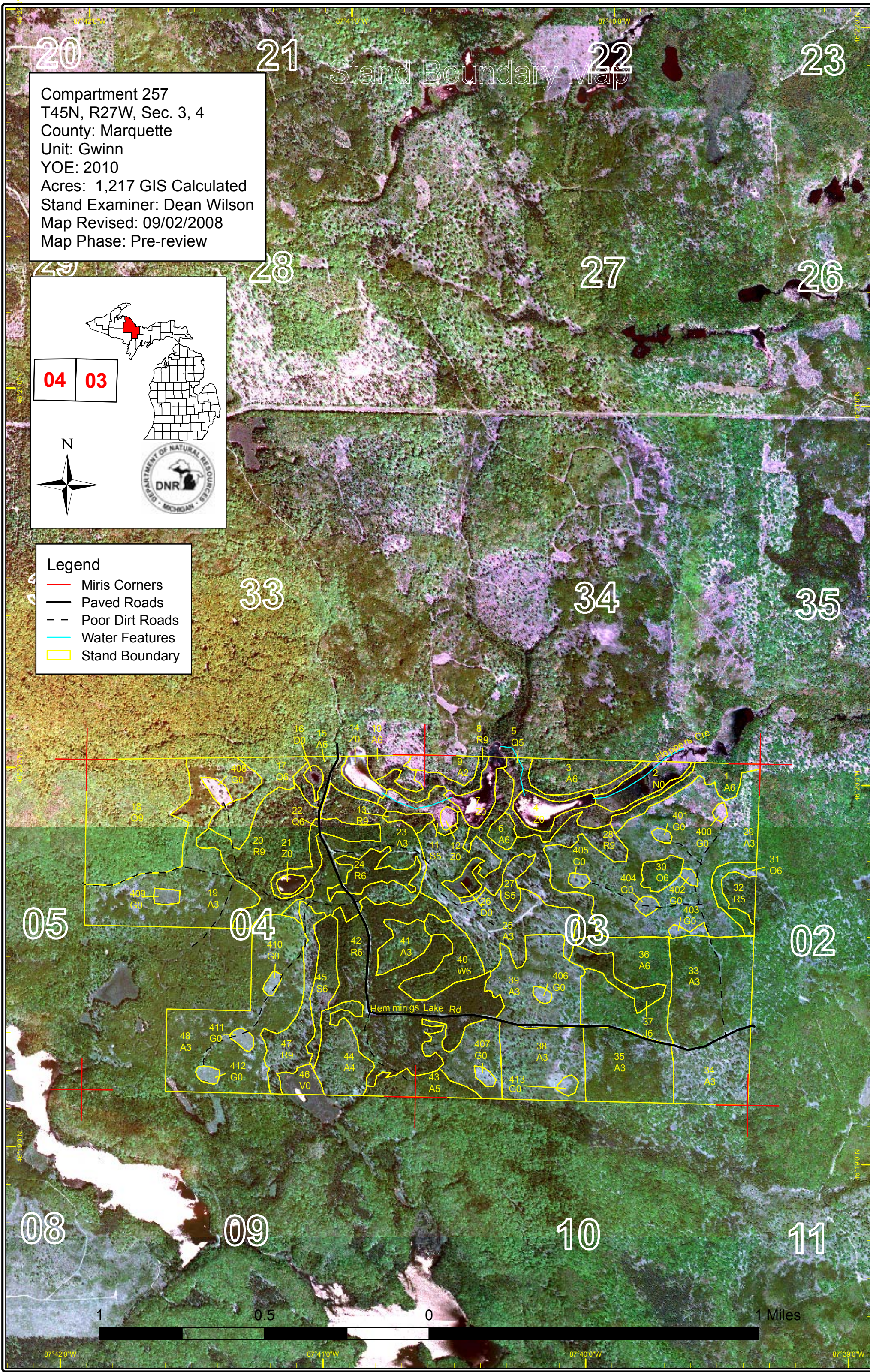
04 03

N

DNR
DEPARTMENT OF NATURAL RESOURCES
- MICHIGAN -

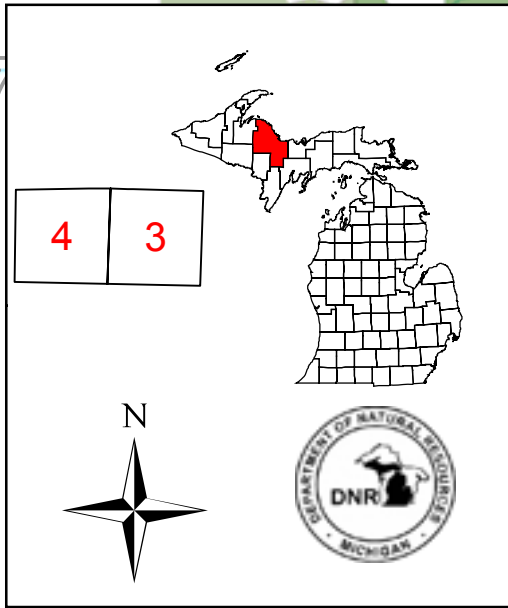
Legend

- Miris Corners
- Paved Roads
- Poor Dirt Roads
- Water Features
- Stand Boundary



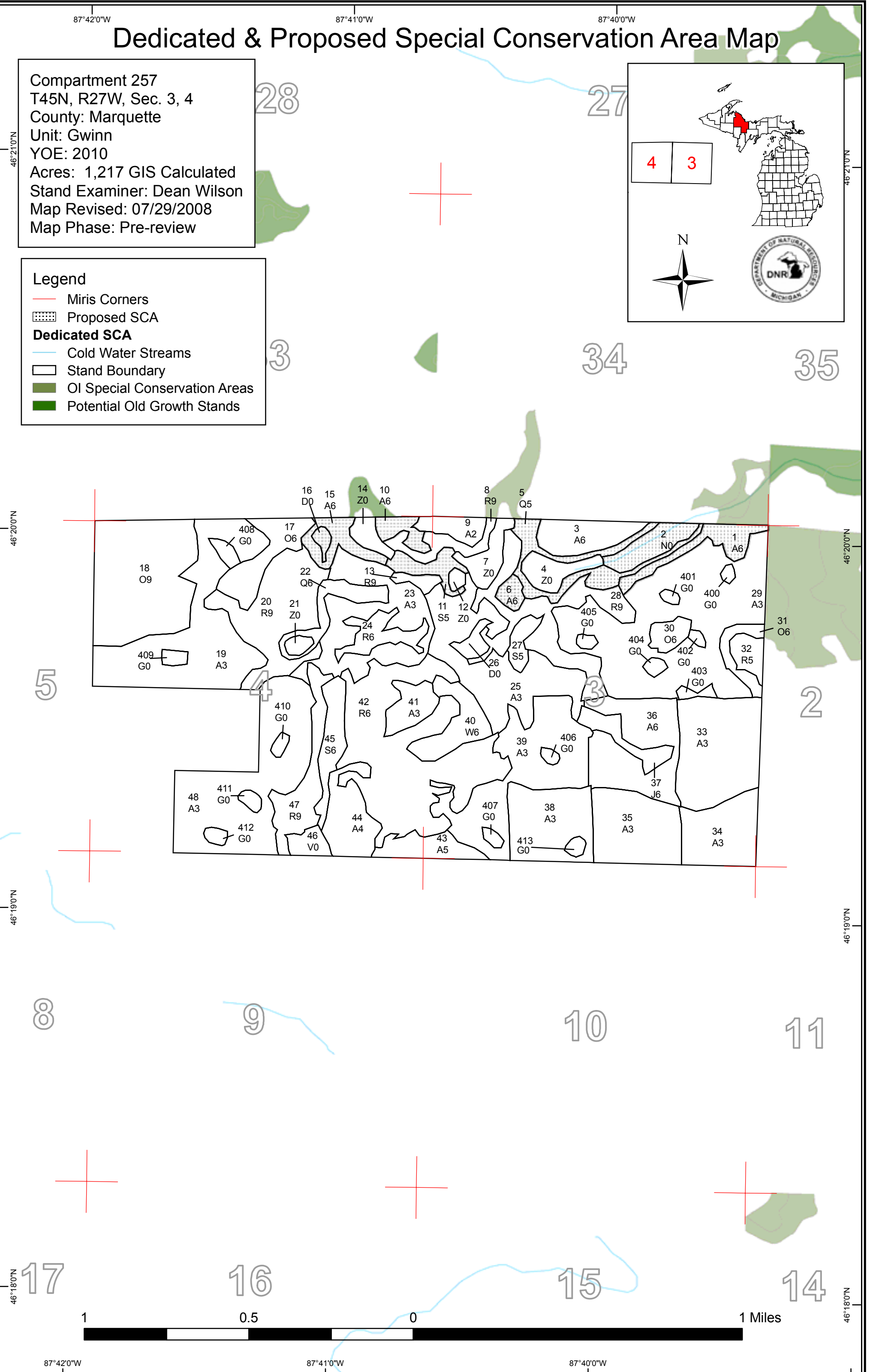
Dedicated & Proposed Special Conservation Area Map

Compartment 257
 T45N, R27W, Sec. 3, 4
 County: Marquette
 Unit: Gwinn
 YOE: 2010
 Acres: 1,217 GIS Calculated
 Stand Examiner: Dean Wilson
 Map Revised: 07/29/2008
 Map Phase: Pre-review



Legend

- Miris Corners
- Proposed SCA
- Dedicated SCA**
- Cold Water Streams
- Stand Boundary
- OI Special Conservation Areas
- Potential Old Growth Stands



87°42'0"W 87°41'0"W 87°40'0"W



DEDICATED CONSERVATION AREA DETAILS

* This is a list of Dedicated Biodiversity Areas for this compartment along with a 1/4 mile buffer surrounding the compartment. Refer to Dedicated Conservation Area Map for areas that the below listed Conservation Areas are located.

ERA = Ecological Reference Area
 HCVA = High Conservation Value Area
 SCA = Special Conservation Area

Conservation Area	Type	Description
SCA	Cold Water Stream	A coldwater stream has temperature and dissolved oxygen conditions that allow naturally-reproduced or stocked trout populations and those of other coldwater fish species (e.g., slimy sculpin) to persist from year to year. Coldwater streams in Michigan typically provide these conditions due to substantial contributions of groundwater to their stream flows. Such streams are established by Director's action and designated as trout resources by Fisheries Order 210.
SCA	Potential Old Growth Areas	This category contains stands were identified for a broad range of reasons and were coded in the OI database as stand condition 8 as potential old growth (POG). Approximately 310,000 acres have been identified through the Operations Inventory (OI)/Compartment Review process. For stands in Year of Entry 2008 and forward, potential old growth is managed for the identified objective until it is: 1) vetted through the Biodiversity Conservation Planning Process (BCPP) and given a specific designation and objective (as an ERA, HCVA, or other type of SCA) and is released from the potential old growth designation; or 2) it is released from the potential old growth designation via the Compartment Review process.