



**GWINN FOREST MANAGEMENT UNIT
COMPARTMENT REVIEW PRESENTATION**

COMPARTMENT # 254 ENTRY YEAR: 2009

Compartment Acreage: 1258 County: Marquette

Revision Date: July 26, 2007

Stand Examiner: Dean Wilson

Legal Description: T46N-R28W, sections 1, 2, 11, 12, and 13.

RMU (if applicable):

Management Goals: Habitat/vegetation and mixed use.

Soil and Topography: Level to moderately undulating courser sand outwash plains are the land form in this compartment.

Ownership Patterns, Development, and Land Use in and Around the Compartment: This compartment is mostly surrounded by non-industrial private ownerships. Land use is primarily for forest production and passive recreation.

Unique, Natural Features (include only non-site specific and non-sensitive information): This compartment contains some unique lowland conifer habitat. The Escanaba River flows through sections 2 and 13.

Archeological, Historical, and Cultural Features (include only non-site specific and non-sensitive information): Nothing significant noted.

Special Management Designations or Considerations: Management operations will be designed to protect drainage ways and maintain diversity. Designated as special conservation areas are stands 26, 27, 31, 30, 33, 34, 55, 57.

Watershed and Fisheries Considerations: Special conservation value designations have been made to protect the surface waters in this compartment.

Wildlife Habitat Considerations: Maintain and protect riparian "Special Conservation Area" stands as movement corridors and core habitat for a multitude of game and nongame wildlife species/communities. Promote habitat legacies in these "Special Conservation Area" stands, such as standing and fallen snags, supercanopy trees, and natural processes/disturbances. Maintain or enhance biodiversity in jack pine stands through conservation of all associated overstory and understory species, with a particular focus on perpetuating aspen clones, oak regeneration, and berry producing shrubs and trees wherever present. Strive for best possible age class distribution in jack pine stands. Increase the number of persistent snags and potential snags in jack pine treatments. Several Kirtland's Warblers were located within the vicinity of this compartment in 2007. Jack pine management will reflect the habitat needs of this endangered species. Oak is to be retained in all treated stands and oak regeneration should be promoted and protected wherever possible.

Mineral Resource and Development Concerns and/or Restrictions: Surface sediments consist of glacial outwash sand and gravel and postglacial alluvium and medium-textured till. The glacial drift thickness varies between 10 and 50 feet. The Precambrian Archean Granite/Gneiss subcrops below the glacial drift. This rock could be used as a dimension stone. Pits are located in Section 2 and there should be potential. The abandoned Republic iron mine is located nine miles to the west. This area has not been leased previously for metallic exploration. There is no economic oil and gas production in the UP.

Vehicle Access: Is good to and internally in this compartment.

Survey Needs: None.

Recreational Facilities and Opportunities: There is no developed recreation in this compartment. The heaviest public use is for hunting and trapping.

Fire Protection: Fire occurrence is a real concern in this area due to the jack pine landscape and the wild land urban interface.

Additional Compartment Information: Ten acres of this compartment off of County Road CD was deeded to Ely Township and developed into a township park.

➤ **The following 5 reports from the Operations Inventory System (OIPC) are attached:**

- ◆ **Cover Type by Age Class**
- ◆ **Cover Type by Management Objective**
- ◆ **Compartment Volume Summary**
- ◆ **Proposed Treatments – No Limiting Factors**
- ◆ **Proposed Treatments – With Limiting Factors**

➤ **The following information is displayed, where pertinent, on the attached compartment maps:**

- ◆ **Base feature information, stand numbers, cover types**
- ◆ **Proposed treatments**
- ◆ **Proposed road access system**
- ◆ **Suggested potential old growth**

9/20/2007 3:55:06 PM

Michigan Department of Natural Resources - Operations Inventory System
Individual Compartment Report

ESCANABA RIVER STATE FOREST

GWINN FOREST MGT UNIT

MARQUETTE COUNTY

COMPARTMENT: 254

Table 3

(acres shown in boxes)

STAND AGE CLASS

COVER TYPE	Not Coded	0-9	10-19	20-29	30-39	40-49	50-59	60-69	70-79	80-89	90-99	100-109	110-119	120-129	130-139	140-149	150-159	All Aged	Total
Aspen			5	52		34	8		5										104
Black Spruce																		73	73
Grass	13																		13
Jack Pine		118	324	5	75	5	263		111	35								4	940
Lowlnd Brush	31																		31
Red Pine			30			36	17												83
Upland Brush	2																	5	7
Water	7																		7
Total	53	118	359	57	75	75	288		116	35								82	1258

9/20/2007 3:55:14 PM

Michigan Department of Natural Resources - Operations Inventory System
Individual Compartment Report

ESCANABA RIVER STATE FOREST

GWINN FOREST MGT UNIT

MARQUETTE COUNTY

COMPARTMENT: 254

Table 3A

(acres shown in boxes)

MANAGEMENT OBJECTIVE TYPE

COVER TYPE	A	S	V	C	G	H	J	I	L	P	N	Q	X	O	B	R	K	Y	F	E	T	D	U	M	Z	W	Total
A Aspen	104																										104
S Black Spruce		73																									73
G Grass					13																						13
J Jack Pine							940																				940
L Lowlnd Brush									31																		31
R Red Pine															83												83
U Upland Brush																								7			7
Z Water																									7		7
Total	104	73			13		940		31						83									7	7		1258

ESCANABA RIVER STATE FOREST

GWINN FOREST MGT UNIT

MARQUETTE COUNTY

COMPARTMENT: **254**

Table 10 - COMPARTMENT VOLUME SUMMARY - ALL STANDS

COMPARTMENT SUMMARY			
TOTAL VOLUME		CUT VOLUME	
Hardwood	769 Cds	Hardwood	334 Cds
Hardwood	6 Mbf	Softwood	4559 Cds
Softwood	13439 Cds	Sum CutVol	4893 Cds
Softwood	9 Mbf		
Sum TotVol	14238 Cds		
Total Cmpt Acres		Acres Proposed For Cut.....	153
1258			

GWINN FOREST MGT UNIT

**Proposed Treatments
With NO Limiting Factors**

Compartment: 254 Entry Year: 2009

Stand	Cover Type	Acres	Age	Site Index	Mgt Obj	Condition	Method Cut	Harvest Priority	Cultural Need	FDF Status	
3	A5	8	53	55	aspen (upland)	mature	final harvest	1			
comnts Fmd : Poor quality off site aspen. Wide ranging stocking. PRESERVE SMAL PATCH OF MAPLE/BIRCH. Wld : Leave oak, cherry, red and white pine, and spruce. Maintain birch/maple stand in north portion of stand.											
4	J6	2	80	69	jack pine	mature	final harvest	1	direct seeding		
comnts Fmd : Starting to have heavy losses to overmaturity. Wld : Leave oak.											
5	J6	20	77	66	jack pine	mature	final harvest	1	direct seeding		
comnts Fmd : NO HERBICIDES TO MAINTAIN ASPEN. Wld : Leave oak and cherry. Retain spruce and white pine.											
7	J6	19	77	66	jack pine	mature	final harvest	1	direct seeding		
comnts Fmd : RETAIN A COUPLE OF SMALL PATCHES OF JACK PINE. Wld : Leave oak, cherry, white pine, red pine, and white birch. Retention patches of jack pine should each be around 1/4 acre in size.											
9	A6	5	75	62	aspen (upland)	immature	final harvest	3			
comnts Fmd : Actually two stands-white birch to the west and aspen to the east. Leave 3 to 6 white birch per acre for seed. Wld : Leave between 40-50 sq ft of white birch and maple where stand is heavy to this type. Leave spruce, oak, cherry, red pine, and white pine.											
10	J6	11	75	66	jack pine	mature	final harvest	1			
comnts Fmd : West 1/3 of stand is semi-open. Wld : Leave spruce, oak, red and white pine, and cherry.											
12	J6	27	80	66	jack pine	mature	final harvest	1	direct seeding		
Wld : Leave oak, spruce, red and white pine, and cherry.											
20	J6	47	75	69	jack pine	mature	final harvest	1	direct seeding		
comnts Fmd : Note: Stand had a salvage cut in Fall of 2002 by St.John Forest Products, made necessary by damage from a severe wind storm which occurred on 7/21/2002.											
40	J6	14	68	65	jack pine	mature	final harvest	1	direct seeding		
comnts Fmd : NO HERBICIDES TO BE USED. Wld : Well established oak saplings in understory. No herbicide use to protect this stand component. Retain oak, red and white pine, spruce, and white birch.											
Total Acres.....		153									

**Proposed Treatments
With Limiting Factors**

Compartment: 254

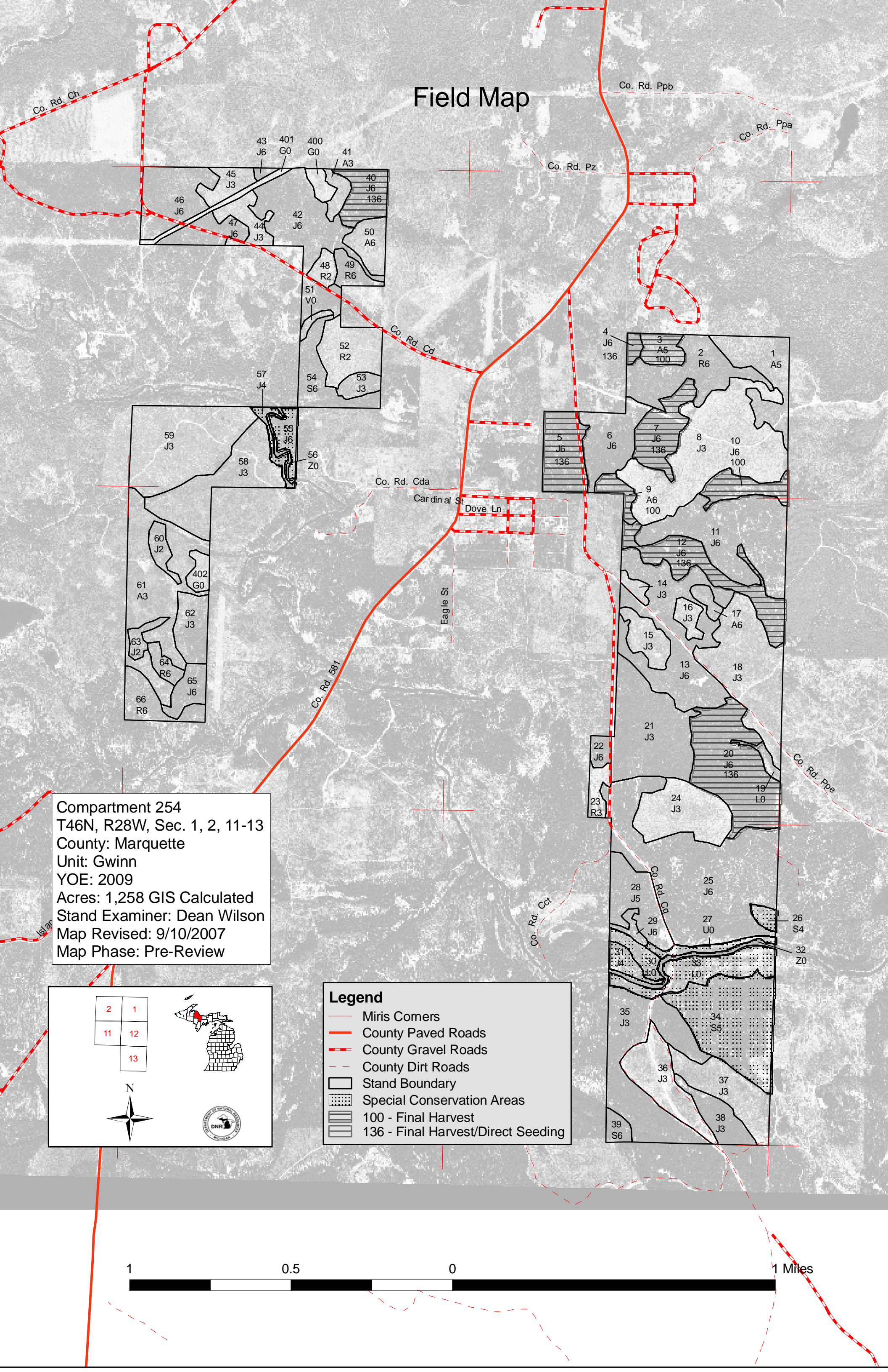
Entry Year: 2009

Stand	Cover Type	Acres	Age	Site Index	Mgt Obj	Condition	Method Cut	Harvest Priority	Cultural Need	FD Status
--------------	-----------------------	--------------	------------	-----------------------	--------------------	------------------	-----------------------	-----------------------------	--------------------------	----------------------

TREATMENT LIMITING FACTORS:

Total Acres..... 0

Field Map



Compartment 254
 T46N, R28W, Sec. 1, 2, 11-13
 County: Marquette
 Unit: Gwinn
 YOE: 2009
 Acres: 1,258 GIS Calculated
 Stand Examiner: Dean Wilson
 Map Revised: 9/10/2007
 Map Phase: Pre-Review

Legend

- Miris Corners
- County Paved Roads
- - - County Gravel Roads
- . . . County Dirt Roads
- ▭ Stand Boundary
- ▨ Special Conservation Areas
- ▨ 100 - Final Harvest
- ▨ 136 - Final Harvest/Direct Seeding

