



**FOREST MANAGEMENT UNIT
COMPARTMENT REVIEW PRESENTATION**

COMPARTMENT # 76 ENTRY YEAR: 2011

Compartment Acreage: 1557 County: Gladwin

DRAFT DRAFT DRAFT

Revision Date: November 2, 2009

Stand Examiner: Rick Myrick

Legal Description: T18N R2E, Sections 13, 14, 23, and 24

RMU (if applicable): None

Management Goals:

The Compartment is a matrix of uplands and lowlands and demonstrates an example of a State Forest area that has been intensively managed for over 30 years. Numerous small stands of less than ten acres each represent the remnants of historical “patch” cuts implemented as standard forest management of the era. The majority of the Compartment’s forested cover types are made up of 30 to 60 year old lowland deciduous forest, younger natural pine stands of 10 to 49 years old, and stands of 1 to 29 year old sapling and pole size oak types. An age spike of approximately 77 acres of 60 to 89 year old oak is represented in the Compartment with 41 of those acres being prescribed for treatment. Overall the forest cover is relatively young, reflecting previous treatment activity. Future Compartment management considerations should examine the possible treatment of combined smaller oak “patches” as larger acreage blocks, once the oak types reach silvicultural and/or age criteria. Heavy deer browse was noted among these smaller oak stands, and the treatment of larger acreage blocks may potentially reduce the concentrated browse intensity common to a limited availability of oak stems.

Soil and Topography:

Soils range from a Croswell-AuGres-Rubicon association; level to sloping, well-drained to somewhat poorly drained soils that have a sandy subsoil, to a Roscommon-Carbondale association; being very poorly drained, mucky and sandy soils, to an Iosco-Brevort-Kawkawlin association; level to undulating, somewhat poorly drained to very poorly drained soils that have sandy to loamy subsoil and loamy underlying material.

Ownership Patterns, Development, and Land Use in and Around the Compartment:

The State land ownership in this Compartment is one contiguous block, except a private 40 acre in-holding located in the SE1/4 of the SW1/4 of Section 14. Approximately three quarters of the Compartment is surrounded by State Forest. The dominant developed feature within the Compartment is the Molasses River Flooding No. 3. The private lands within the area are a mix of year-round rural residences, farms, and hunting camp properties; most of which consist of 40 to 320 acre parcels.

Unique, Natural Features (include only non-site specific and non-sensitive information):

There are no known occurrences and none were detected during the inventory process.

Archeological, Historical, and Cultural Features

The Michigan Department of History, Arts and Libraries data-base indicates no known occurrences and none were detected during the inventory process.

Special Management Designations or Considerations:

The Molasses River Flooding No. 3 is designated a Special Conservation Area (SCA).

Watershed and Fisheries Considerations:

The approximately 600 acre Molasses River Flooding No. 3 is an impoundment of the Little Molasses River which flows through the Compartment from the north, discharging at a southern spillway onto private land. The river then continues through private land eventually flowing back onto State property from the east, dividing the remainder of the Compartment. The impoundment and river provides habitat to Bluegill, Northern Pike and other warm water fish.

Wildlife Habitat Considerations:

The Molasses River Flooding No. 3 provides quality waterfowl breeding, nesting, and intermittent migration habitat and comprises a large segment of this compartment. Besides various species of ducks and geese, shore and marsh birds are also common – abundance is typically geared to existing water levels. Sand Hill Crane, and State threatened Bald Eagle, Osprey and Common Loon are frequently observed. Ruffed Grouse, Woodcock, and White-tailed Deer also benefit from the riparian zone of the impoundment and river.

The previous spillway structure on the Molasses River Flooding No. 3 was removed and replaced with a scalloped/drivable dike top surface. Water levels will fluctuate with the varying degree of precipitation received annually. Desired flooding depths can be maintained more effectively with the new scalloped water control system.

Mineral Resource and Development Concerns and/or Restrictions:

Surface sediments consist of lacustrine (lake) sand and gravel and an end moraine of medium-textured till. The glacial drift thickness varies between 100 and 200 feet. Beneath the glacial drift are the Pennsylvania Grand River and Saginaw Formations. The Saginaw Formation is used for clay/shale for brick making in other areas of the State. This area is predominately sand. Gravel potential in the Compartment is considered limited. This area has had little oil and gas activity. North Buckeye Field is located seven miles to the west. The field, discovered in 1936, has produced over 21 MBO from the Devonian Dundee Formation. The Compartment is currently leased for oil and gas exploration.

Vehicle Access:

Much of the Compartment can be accessed directly off Center Fireline Trail, Grim Road, and/or Section 13 Grim Twp. Road. Numerous poor dirt roads provide access to the Compartment interior, including a forest two-track which begins at Grim Road and terminates at the west end of the Wildlife Division managed Molasses River Flooding No. 3 dike.

Survey Needs:

None.

Recreational Facilities and Opportunities:

The Compartment is located approximately one mile south of the Gladwin ORV Trailhead Parking lot. Subsequently the western 1/3 of the Compartment is traversed by a significant and intensely used stretch of ORV trail which runs from the north boundary south through two-thirds of this State forest area. Evidence of heavy off-trail use is noticeable. The Compartment also provides white-tailed deer hunting opportunities and is dotted with numerous “traditional” deer hunting campsites throughout. During open firearm deer season in particular, deer hunters represent a high use stakeholder population within the Compartment.

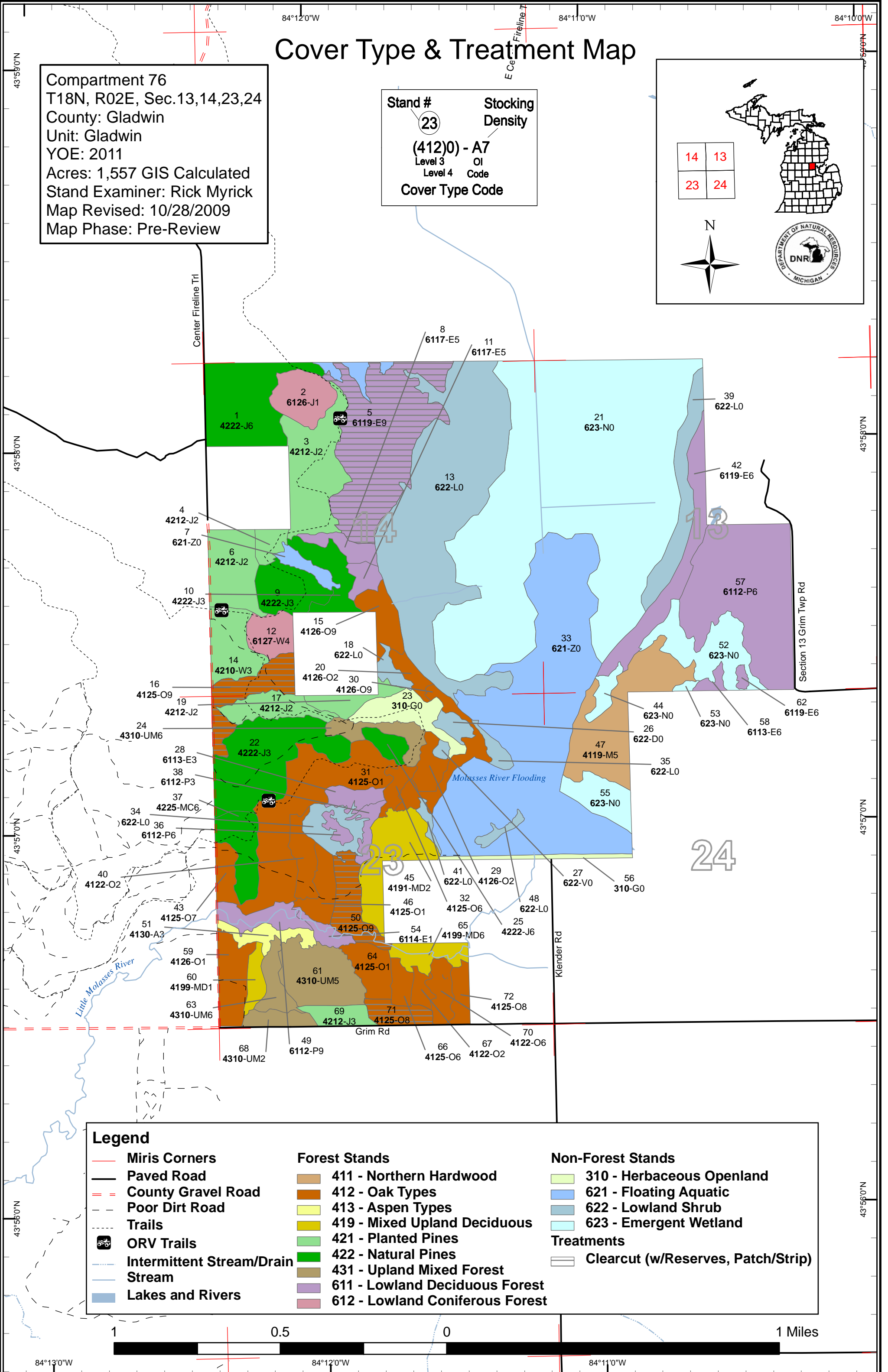
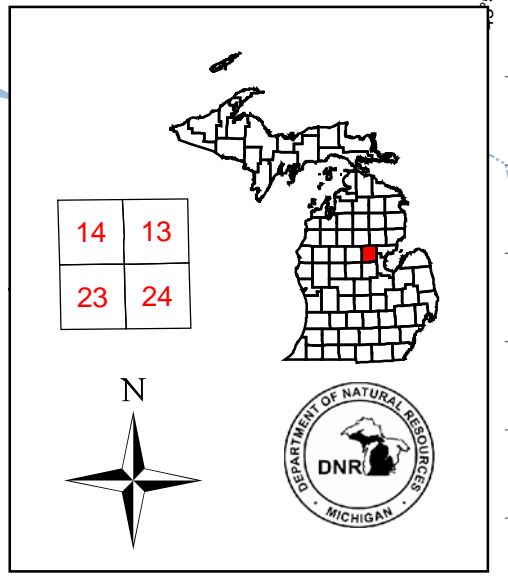
Fire Protection:

The access into this Compartment is moderate to good for most of the acreage. However, over 200 acres of the Compartment are covered with fire dependent jack pine and/or jack pine with mixed deciduous species. During the spring 2009, two wildfires occurred within the Compartment. One wildfire encompassed 20 acres of immature jack pine; the other burned 18 acres of mixed hardwoods. Fire potential is moderate to high in this Compartment.

Cover Type & Treatment Map

Compartment 76
 T18N, R02E, Sec.13,14,23,24
 County: Gladwin
 Unit: Gladwin
 YOE: 2011
 Acres: 1,557 GIS Calculated
 Stand Examiner: Rick Myrick
 Map Revised: 10/28/2009
 Map Phase: Pre-Review

Stand #
 23
Stocking Density
 (412)0 - A7
 Level 3 OI
 Level 4 Code
Cover Type Code



Legend		
	Miris Corners	
	Paved Road	
	County Gravel Road	
	Poor Dirt Road	
	Trails	
	ORV Trails	
	Intermittent Stream/Drain	
	Stream	
	Lakes and Rivers	
	Forest Stands	
	411 - Northern Hardwood	
	412 - Oak Types	
	413 - Aspen Types	
	419 - Mixed Upland Deciduous	
	421 - Planted Pines	
	422 - Natural Pines	
	431 - Upland Mixed Forest	
	611 - Lowland Deciduous Forest	
	612 - Lowland Coniferous Forest	
	Non-Forest Stands	
	310 - Herbaceous Openland	
	621 - Floating Aquatic	
	622 - Lowland Shrub	
	623 - Emergent Wetland	
	Treatments	
	Clearcut (w/Reserves, Patch/Strip)	

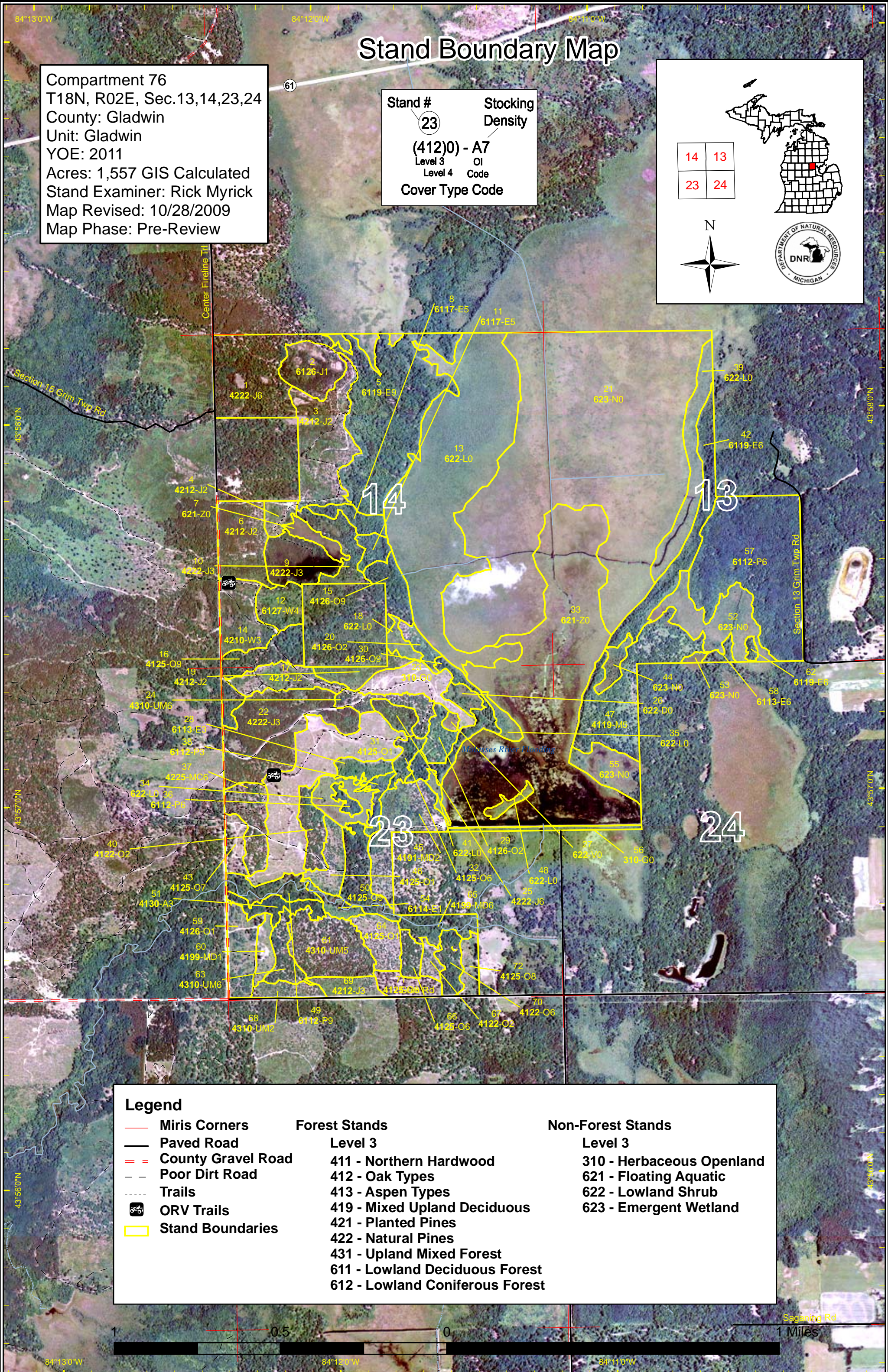


84°13'0"W 84°12'0"W 84°11'0"W

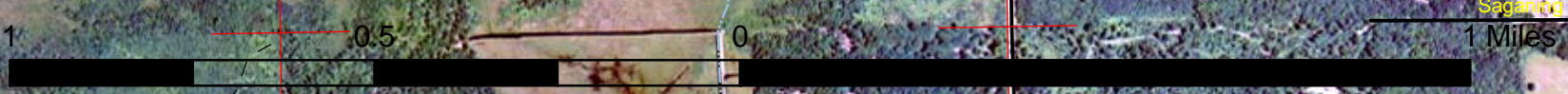
Stand Boundary Map

Compartment 76
 T18N, R02E, Sec.13,14,23,24
 County: Gladwin
 Unit: Gladwin
 YOE: 2011
 Acres: 1,557 GIS Calculated
 Stand Examiner: Rick Myrick
 Map Revised: 10/28/2009
 Map Phase: Pre-Review

Stand #
 23
Stocking Density
 (412)0 - A7
 Level 3 OI
 Level 4 Code
Cover Type Code



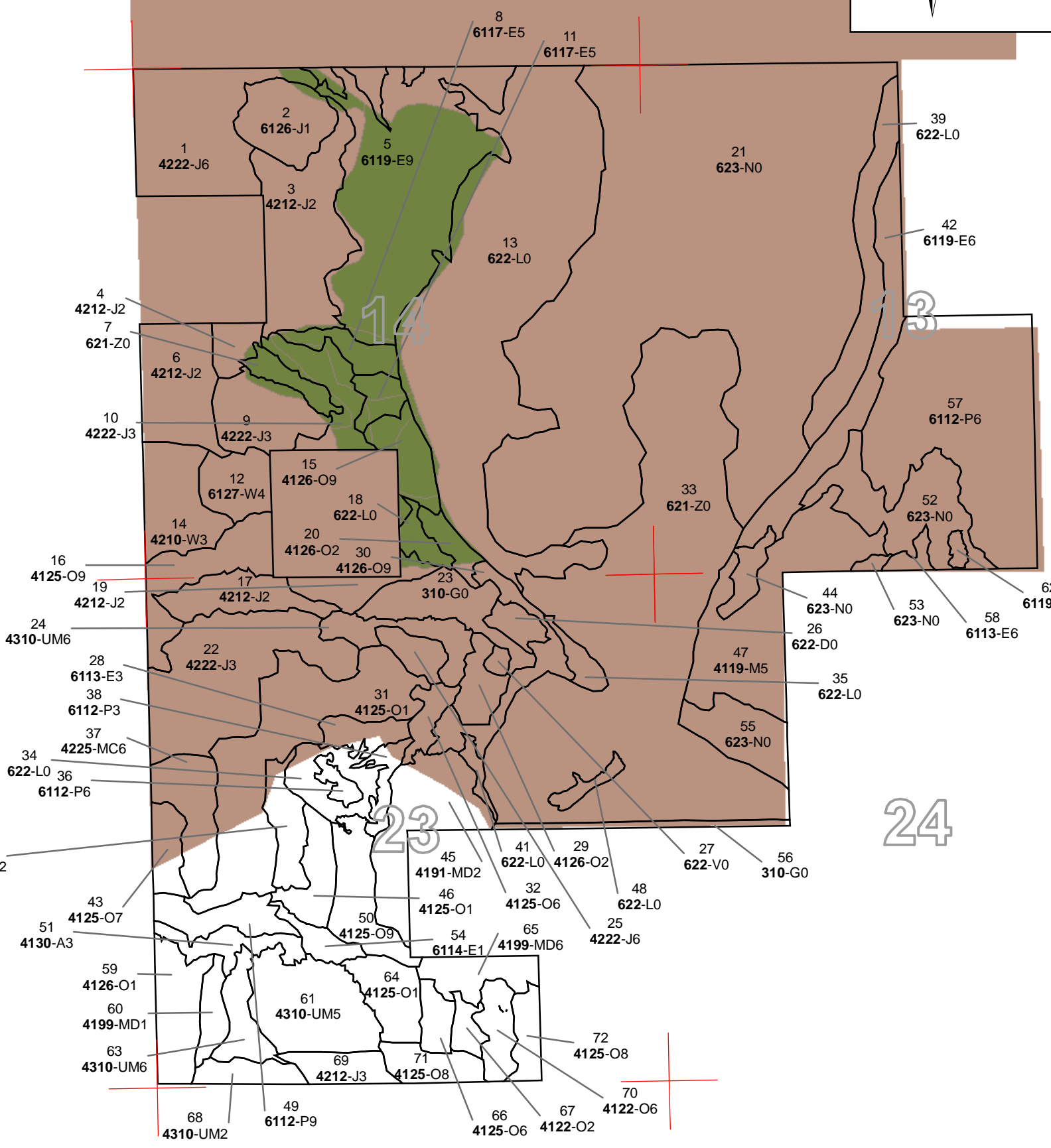
Legend		
	Miris Corners	
	Paved Road	
	County Gravel Road	
	Poor Dirt Road	
	Trails	
	ORV Trails	
	Stand Boundaries	
Forest Stands		
Level 3		
	411 - Northern Hardwood	
	412 - Oak Types	
	413 - Aspen Types	
	419 - Mixed Upland Deciduous	
	421 - Planted Pines	
	422 - Natural Pines	
	431 - Upland Mixed Forest	
	611 - Lowland Deciduous Forest	
	612 - Lowland Coniferous Forest	
Non-Forest Stands		
Level 3		
	310 - Herbaceous Openland	
	621 - Floating Aquatic	
	622 - Lowland Shrub	
	623 - Emergent Wetland	



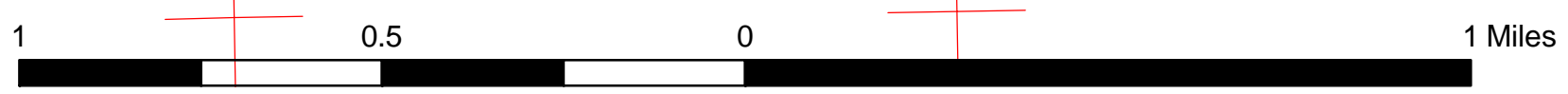
Dedicated & Proposed Special Conservation Area Map

Compartment 76
 T18N, R02E, Sec.13,14,23,24
 County: Gladwin
 Unit: Gladwin
 YOE: 2011
 Acres: 1,557 GIS Calculated
 Stand Examiner: Rick Myrick
 Map Revised: 10/28/2009
 Map Phase: Pre-Review

Stand # **23**
 Stacking Density
(412)0 - A7
 Level 3 OI
 Level 4 Code
 Cover Type Code



Legend		Forest Stands	Non-Forest Stands
	Miris Corners	Level 3	Level 3
	Stand Boundaries	411 - Northern Hardwood	310 - Herbaceous Openland
	Potential Old Growth Stands	412 - Oak Types	621 - Floating Aquatic
	Wildlife Management Areas	413 - Aspen Types	622 - Lowland Shrub
	IFMAP Special Conservation Areas	419 - Mixed Upland Deciduous	623 - Emergent Wetland
		421 - Planted Pines	
		422 - Natural Pines	
		431 - Upland Mixed Forest	
		611 - Lowland Deciduous Forest	
		612 - Lowland Coniferous Forest	



Gladwin Mgt. Unit

Covertypes, Acres, and Age summary
(Level 3 Cover Type)

Compartment 076 Year of Entry 2011

Report Date: 10/28/2009



	Age Class															Total
	Non-Forested	1-9	10-19	20-29	30-39	40-49	50-59	60-69	70-79	80-89	90-99	100-109	110-119	120 +	Uneven Age	
Aspen Types	0	0	0	8	0	0	0	0	0	0	0	0	0	0	0	8
Emergent Wetland	334	0	0	0	0	0	0	0	0	0	0	0	0	0	0	334
Floating Aquatic	187	0	0	0	0	0	0	0	0	0	0	0	0	0	0	187
Herbaceous Openland	20	0	0	0	0	0	0	0	0	0	0	0	0	0	0	20
Lowland Coniferous Forest	0	0	0	11	0	0	0	0	0	0	0	0	0	0	16	26
Lowland Deciduous Forest	0	0	5	14	76	15	100	10	0	0	0	0	0	0	0	220
Lowland Shrub	184	0	0	0	0	0	0	0	0	0	0	0	0	0	0	184
Mixed Upland Deciduous	0	6	25	0	10	0	0	0	0	0	0	0	0	0	0	40
Natural Pines	0	0	63	32	38	0	0	0	0	0	0	0	0	0	0	133
Northern Hardwood	0	0	41	0	0	0	0	0	0	0	0	0	0	0	0	41
Oak Types	0	65	25	34	0	0	0	26	43	8	5	0	0	0	0	206
Planted Pines	0	0	69	40	0	0	0	0	0	0	0	0	0	0	0	109
Upland Mixed Forest	0	0	7	44	0	0	0	0	0	0	0	0	0	0	0	51
Total	725	70	234	183	124	15	100	36	43	8	5	0	0	0	16	1559

**PROPOSED TREATMENTS
NO LIMITING FACTORS**



S
t
a
n
d

Treatment Name	Acres	Stage1 CoverType	Size Density	Stand Age	Treatment Type	Treatment Method	Cover Type Objective
5 73076005-CC w/R	74.7	6119 - Mixed Lowland Deciduous Forest	High Density Log	55	Harvest	Clearcut with Reserves	Mixed Lowland Deciduous Forest

Rev
Cmnt: Leave one to two chain buffer along east edge of stand for retention.

Rev
Spec: Cut all trees 2" or greater, except white pine, tamarack and green marked white oak. Leave tree mark one to three white oak per acre.

Next
Steps:

16 73076016-CCw/R	17.3	4125 - Black, N. Pin Oak	High Density Log	78	Harvest	Clearcut with Reserves	Black, N. Pin Oak
--------------------------	------	--------------------------	------------------	----	---------	------------------------	-------------------

Rev
Cmnt: Scatter tops along trails where ORV use has occurred outside of the designated ORV trail.

Rev
Spec: Cut all trees greater than 2". Leave all white pine. Retain 3 % representative scattered trees and/or pockets for retention.

Next
Steps:

50 73076050-CCw/R	15.2	4125 - Black, N. Pin Oak	High Density Log	65	Harvest	Clearcut with Reserves	White, Black, N. Pin Oak
--------------------------	------	--------------------------	------------------	----	---------	------------------------	--------------------------

Rev
Cmnt:

Rev
Spec: Cut all trees 2" or greater, except green marked white oak. Leave tree mark one to three white oak per acre. Leave a higher concentration of white oak at the north end of the stand to meet 3% overall retention.

Next
Steps:

71 73076071-CC	8.1	4125 - Black, N. Pin Oak	Medium Density Log	89	Harvest	Clearcut	Oak, Pine
-----------------------	-----	--------------------------	--------------------	----	---------	----------	-----------

Rev
Cmnt:

Rev
Spec: Cut all trees 2" or greater, chip tops for site prep. No retention.

Next
Steps: After harvest, interplant this stand along with adjacent stand 64 to jack pine.

**Total Treatment
Acreage Proposed: 115.2**

**PROPOSED TREATMENTS
WITH LIMITING FACTORS**



S
t
a
n
d

Treatment Name	Acres	Stage1 Cover Type	Size Density	Stand Age	Treatment Type	Treatment Method	Cover Type Objective	Page 1 of 1
----------------	-------	-------------------	--------------	-----------	----------------	------------------	----------------------	-------------

Limiting Factor
and Comment:

Rev
Cmnt:

Rev
Spec:

Next
Steps:

No Treatment
Reason

**Total Treatment
Acreage Proposed: 0**



PROPOSED SPECIAL CONSERVATION AREA* (SCA) DETAILS

* This is a partial list of SCAs for this compartment. Not included are those areas identified under other Department initiatives (Natural Rivers, Deer Wintering Areas, etc.). Those will be identified in separate, future map and report products.

Inventory Method: IFMAP

Stand	SCA Name	Acres	Comments
<hr/>			
<hr/>			



DEDICATED CONSERVATION AREA DETAILS

* This is a list of Dedicated Biodiversity Areas for this compartment along with a 1/4 mile buffer surrounding the compartment. Refer to Dedicated Conservation Area Map for areas that the below listed Conservation Areas are located.

ERA = Ecological Reference Area
 HCVA = High Conservation Value Area
 SCA = Special Conservation Area

Conservation Area	Type	Description
SCA	Habitat Area	An area that provide some specific need for the life cycle of wildlife species, including State Wildlife Areas and Waterfowl Production Areas, deer wintering complexes in lowland conifer communities, grassland openings and savannas. Habitat areas are distinct from critical habitat designated for recovery of endangered or threatened species (such as Kirtland's warbler or piping plover areas) in that they are more general in nature, are not primarily associated with threatened or endangered species, and are not covered by species recovery plans that are developed in cooperation with Federal agencies.
SCA	Potential Old Growth Areas	This category contains stands were identified for a broad range of reasons and were coded in the OI database as stand condition 8 as potential old growth (POG). Approximately 310,000 acres have been identified through the Operations Inventory (OI)/Compartment Review process. For stands in Year of Entry 2008 and forward, potential old growth is managed for the identified objective until it is: 1) vetted through the Biodiversity Conservation Planning Process (BCPP) and given a specific designation and objective (as an ERA, HCVA, or other type of SCA) and is released from the potential old growth designation; or 2) it is released from the potential old growth designation via the Compartment Review process.