



**FOREST MANAGEMENT UNIT  
COMPARTMENT REVIEW PRESENTATION**

**COMPARTMENT # 75 ENTRY YEAR: 2010**

**Compartment Acreage: 1875 County: Gladwin**

---

**Revision Dates:** Draft 7-18-08. Draft 10-30-08.

**Stand Examiner:** Mark Reichel

**Legal Description:** T 18N, R 2E Sections 22, 27, 34

**Management Goals:** The overall forest management goal in Gladwin compartment 75 is to maintain forest cover and current forest cover types. 30% (555 acres) of this compartment is oak forest types. Last year of entry three large stands were successfully regenerated to mixed oak-pine by harvesting the oak, then trenching and interplanting jack pine and red pine. 130 acres of this is over 80 years old and needs to be regenerated via first entry shelterwood cuts if the oak cover type is to be maintained. Several of these stands do not have adequate vigor for a shelterwood harvest; these stands will be final harvested and interplanted with pine. Two additional oak stands over 70 years old will have first entry shelterwoods, and two stands will have final entries, for a total of 186 acres of oak to be treated. 3 oak stands totaling 73 acres are not regenerating well and/or have heavy competition from bracken fern or other plants. Scarifying is proposed for two of these stands, and another may be burned.

13% of the compartment is pines, mostly jack pine of which 17 acres in 3 stands will be final harvested and re-planted or direct seeded to pine. There are also two red pine stands that will have initial entry thinnings. 4 stands totaling 77 acres were recently harvested and did not regenerate adequately. They will be interplanted or seeded to pine. Jack pine in this compartment has severe pine rust, with a low level of mortality and branch dieback. As a result, where planting is needed, red pine will be planted where soils permit. Red pine scattered through the compartment has annual growth equal to or better than jack pine. Planting red pine will also increase biodiversity. Many of the oak and pine stands in this compartment are mixed oak/pine. This diversity will be preserved through retention where harvests occur.

Most of the aspen in this compartment is in young age classes; only 2 aspen stands totaling 21 acres will be final harvested this year of entry.

**Soil and Topography:** The northern half of compartment 75 is a large, homogenous dry dune complex with oak and pine stands. Most of the area has very sandy Grayling and well-drained Croswell soils. The southern half of the compartment consists mainly of two soil associations: very poorly drained Kinross soils supporting lowland shrub, swamp aspen or swamp jack pine stands, and Croswell-Au Gres-Kinross association soils that vary from well drained to poorly drained, supporting aspen or swamp aspen stands. The south half of the compartment is also dissected by long oak ridges with Grayling soil. The compartment is dissected by the Molasses River from Southwest to Northeast. The lowland hardwood stands along the floodplains and one large tributary are inoperable for equipment and serve as riparian buffer/corridors.

**Ownership Patterns, Development, and Land Use in and Around the Compartment:** This compartment is a continuous block of state land surrounded by state land with the exception of a half mile of private land

on the east edge of section 34, and one private "40" at the far Northeast corner. This compartment is on the edge of the large block of state forest in eastern Gladwin county; it is all farmland to the south and east.

**Unique, Natural Features:** None per MNFI.

**Archeological, Historical, and Cultural Features:** None per HAL database.

**Special Management Designations or Considerations:** The South Loop of the Gladwin ORV trail runs through section 27. The ORV scramble area is also in section 27 along Grim Road. There is a director's order prohibiting ORV riding in the portion of section 27 Northwest of the Molasses river, and in the Northwest ¼ and the North half of the southwest ¼ of section 27 south of the Molasses River. This order is working well. The ORV trails in Section 22 should be surveyed along with section 21 to the West in compartment 71, when they are surveyed. The northeast corner of section 27 is not nearly as bad, but should also be assessed. Roads in this area could be closed when stand 28, 29, 34 and 35 are harvested. A new berm in stand 75 has been bypassed; the bypasses should be blocked when stand 71 or 79 is harvested.

**Watershed and Fisheries Considerations:**

**Wildlife Habitat Considerations:**

**Mineral Resource and Development Concerns and/or Restrictions:** Surface sediments consist of lacustrine (lake) sand and gravel. The glacial drift thickness varies between 100 and 200 feet. Beneath the Glacial Drift are the Pennsylvanian Grand River and Saginaw Formations. The Saginaw Formation is used for clay/shale in other areas of the State. This area is predominantly sand, and gravel potential in the compartment is considered limited. This area has had little oil and gas activity. North Buckeye Field is located six miles to the west. The field, discovered in 1936, has produced over 21 MBO from the Devonian Dundee Formation. There are no current State oil and gas leases in the compartment, but recent leasing occurred just to the east and west in May 2008.

**Vehicle Access:** Grim and Center Fireline Roads, both improved gravel roads, are the primary access for this compartment. South of section 75 is more remote. Access to section 27 is from a good dirt road running south from Grim Road on the east side of the river. Access to section 34 is via a dirt road coming in from Eastman Road, over a mile away. These two road systems are separated by swamp hardwood and lowland brush stands.

**Survey Needs:** None.

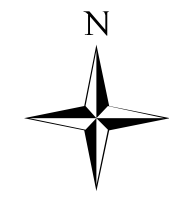
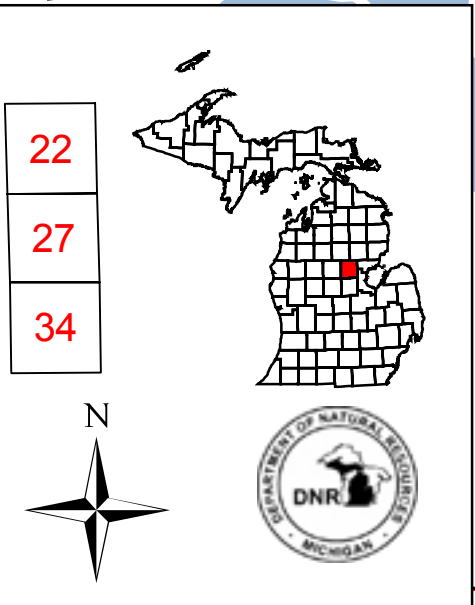
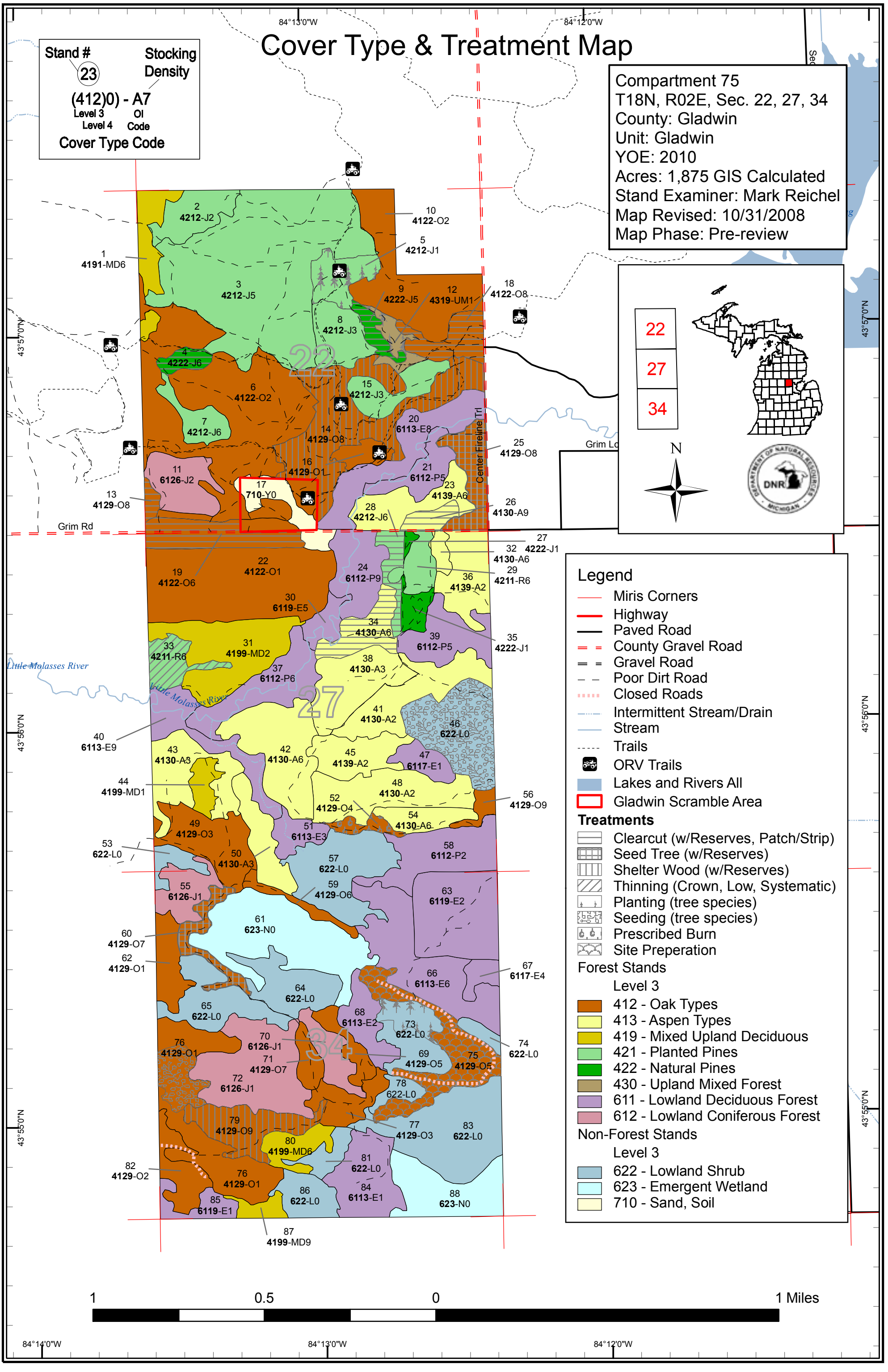
**Recreational Facilities and Opportunities:** This compartment is a heavy ORV use area: see Special Management Designations above. A large amount of unauthorized ORV trails exist in the compartment. The timber harvest contracts in the vicinity of these trails will use a shortwood specification to retain oak tops on site, in order to block many of these trails. The guardrails along Grim road, and trenching and tree planting North and South of the road, have been successful in controlling ORV damage. Timber sale administration in this compartment will focus heavily on protecting authorized trails and controlling ORV damage. There are some heavily used campsites in section 22, as well as some hunting camps elsewhere in the compartment.

**Fire Protection:**

# Cover Type & Treatment Map

Stand #  
**23**  
**(4120) - A7**  
 Level 3 OI  
 Level 4 Code  
**Cover Type Code**

Compartment 75  
 T18N, R02E, Sec. 22, 27, 34  
 County: Gladwin  
 Unit: Gladwin  
 YOE: 2010  
 Acres: 1,875 GIS Calculated  
 Stand Examiner: Mark Reichel  
 Map Revised: 10/31/2008  
 Map Phase: Pre-review



### Legend

- Miris Corners
- Highway
- Paved Road
- - County Gravel Road
- - Gravel Road
- - - Poor Dirt Road
- - - Closed Roads
- Intermittent Stream/Drain
- Stream
- - - Trails
- ORV Trails
- Lakes and Rivers All
- Gladwin Scramble Area

### Treatments

- Clearcut (w/Reserves, Patch/Strip)
- Seed Tree (w/Reserves)
- Shelter Wood (w/Reserves)
- Thinning (Crown, Low, Systematic)
- Planting (tree species)
- Seeding (tree species)
- Prescribed Burn
- Site Preparation

### Forest Stands

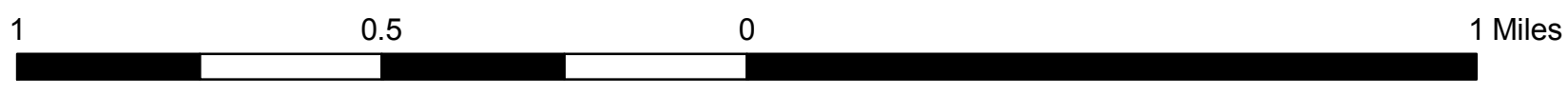
Level 3

- 412 - Oak Types
- 413 - Aspen Types
- 419 - Mixed Upland Deciduous
- 421 - Planted Pines
- 422 - Natural Pines
- 430 - Upland Mixed Forest
- 611 - Lowland Deciduous Forest
- 612 - Lowland Coniferous Forest

### Non-Forest Stands

Level 3

- 622 - Lowland Shrub
- 623 - Emergent Wetland
- 710 - Sand, Soil



84°14'0"W      84°13'0"W      84°12'0"W

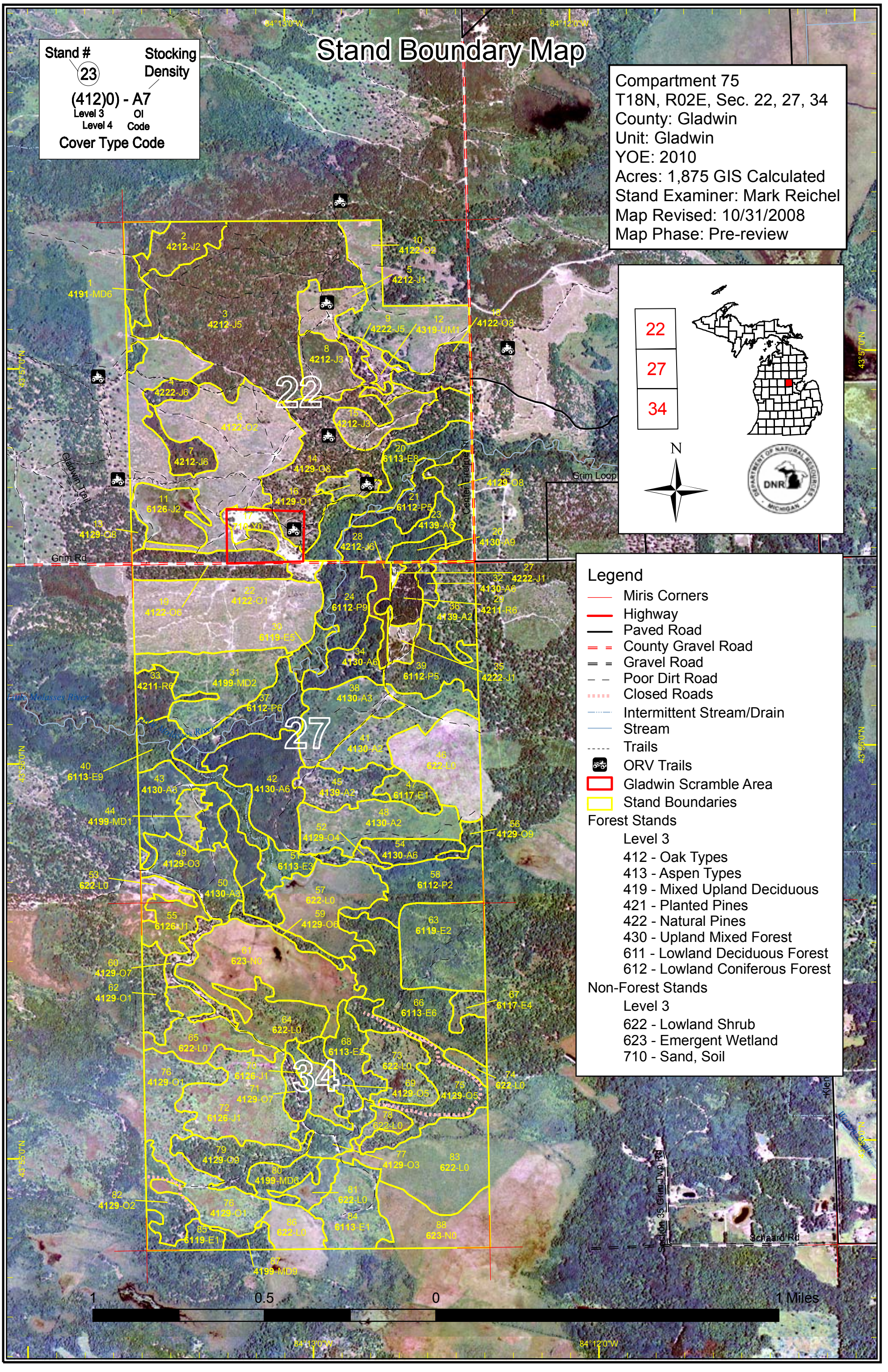
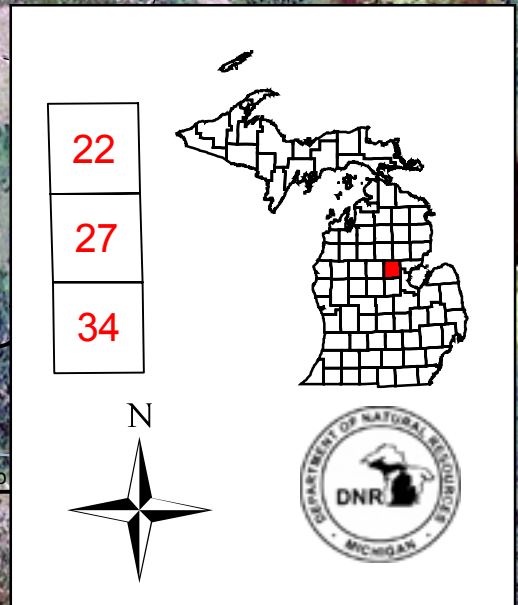
43°56'0"N  
43°55'0"N

43°56'0"N  
43°55'0"N

# Stand Boundary Map

Stand #  
**23**  
**(412)0 - A7**  
 Level 3 OI  
 Level 4 Code  
 Cover Type Code

Compartment 75  
 T18N, R02E, Sec. 22, 27, 34  
 County: Gladwin  
 Unit: Gladwin  
 YOE: 2010  
 Acres: 1,875 GIS Calculated  
 Stand Examiner: Mark Reichel  
 Map Revised: 10/31/2008  
 Map Phase: Pre-review



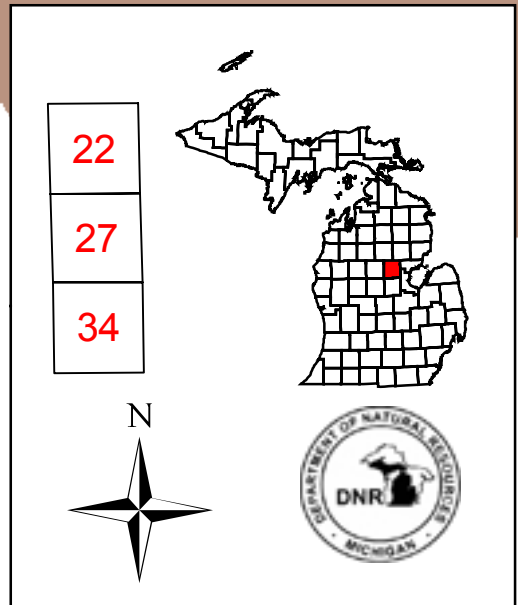
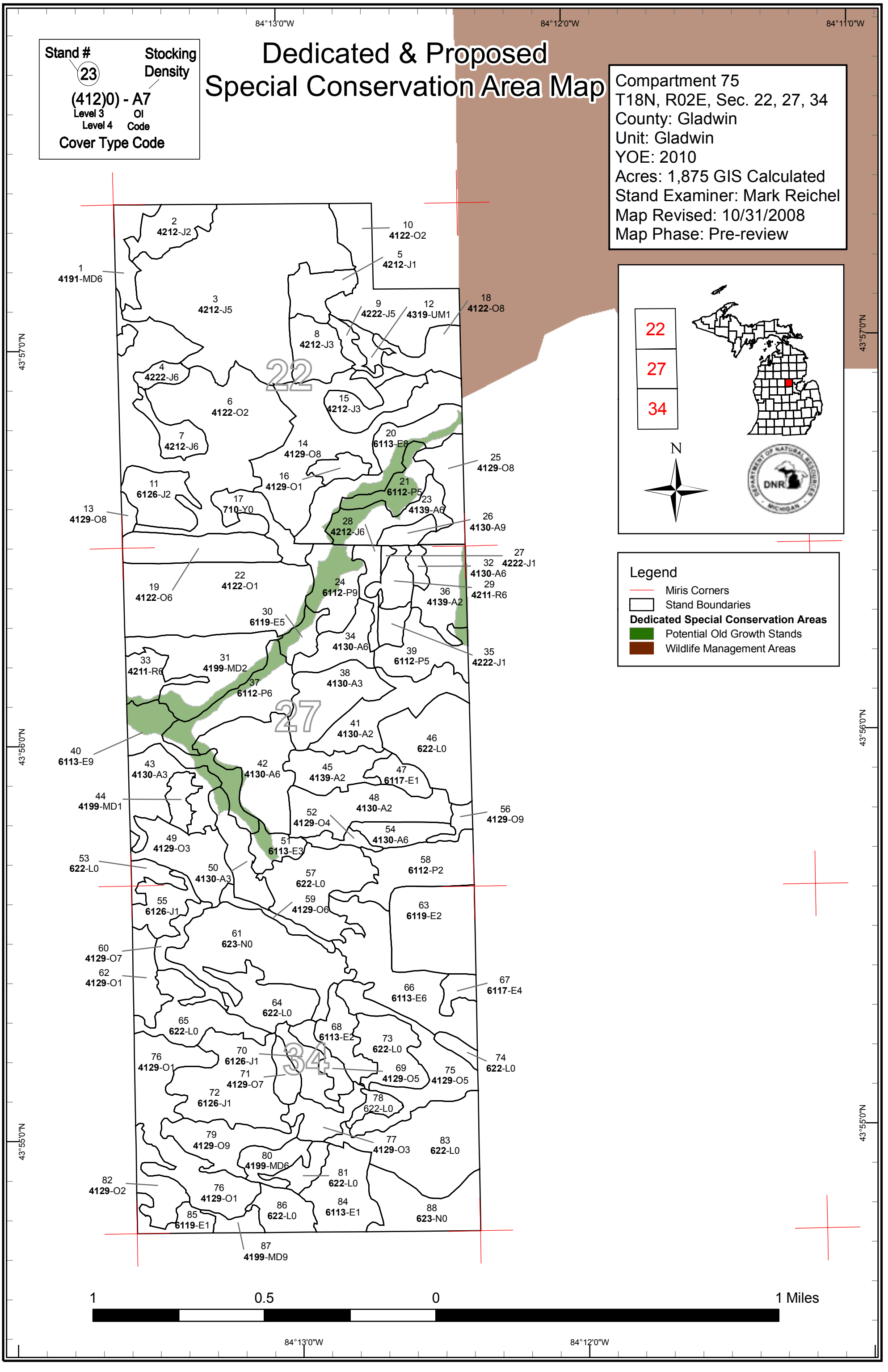
- Legend**
- Miris Corners
  - Highway
  - Paved Road
  - County Gravel Road
  - Gravel Road
  - Poor Dirt Road
  - Closed Roads
  - Intermittent Stream/Drain
  - Stream
  - Trails
  - ORV Trails
  - Gladwin Scramble Area
  - Stand Boundaries
- Forest Stands**
- Level 3
- 412 - Oak Types
  - 413 - Aspen Types
  - 419 - Mixed Upland Deciduous
  - 421 - Planted Pines
  - 422 - Natural Pines
  - 430 - Upland Mixed Forest
  - 611 - Lowland Deciduous Forest
  - 612 - Lowland Coniferous Forest
- Non-Forest Stands**
- Level 3
- 622 - Lowland Shrub
  - 623 - Emergent Wetland
  - 710 - Sand, Soil



# Dedicated & Proposed Special Conservation Area Map

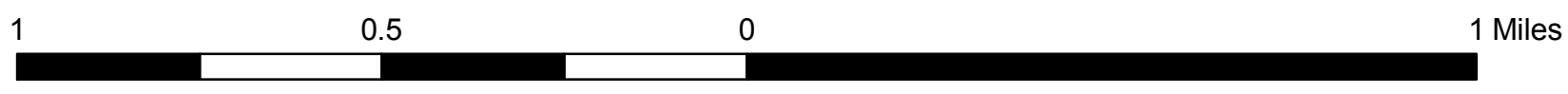
Stand #  
**23**  
 (412)0 - A7  
 Level 3 OI  
 Level 4 Code  
 Cover Type Code

Compartment 75  
 T18N, R02E, Sec. 22, 27, 34  
 County: Gladwin  
 Unit: Gladwin  
 YOE: 2010  
 Acres: 1,875 GIS Calculated  
 Stand Examiner: Mark Reichel  
 Map Revised: 10/31/2008  
 Map Phase: Pre-review



**Legend**

- Miris Corners
- Stand Boundaries
- Dedicated Special Conservation Areas**
- Potential Old Growth Stands
- Wildlife Management Areas



43°57'0"N

43°56'0"N

43°55'0"N

43°57'0"N

43°56'0"N

43°55'0"N

84°13'0"W

84°12'0"W

84°11'0"W

84°13'0"W

84°12'0"W

Gladwin Mgt. Unit

**Covertypes, Acres, and Age summary**  
(Level 3 Cover Type)

Compartment 075 Year of Entry 2010

Report Date: 10/31/2008



	Age Class														Total	
	Non-Forested	1-9	10-19	20-29	30-39	40-49	50-59	60-69	70-79	80-89	90-99	100-109	110-119	120 +		Uneven Age
Aspen Types	0	88.3	0	62.9	88.5	15.6	5.8	0	0	0	0	0	0	0	0	261.0
Emergent Wetland	82.7	0	0	0	0	0	0	0	0	0	0	0	0	0	0	82.7
Lowland Coniferous Forest	0	11.3	76.6	0	0	0	0	0	0	0	0	0	0	0	0	87.9
Lowland Deciduous Forest	0	0	39.8	65.4	28.5	26.2	0	0	0	163.4	0	0	0	0	0	323.3
Lowland Shrub	219.6	0	0	0	0	0	0	0	0	0	0	0	0	0	0	219.6
Mixed Upland Deciduous	0	38.8	6.9	0	14.7	0	0	16.3	0	0	0	0	0	0	0	76.6
Natural Pines	0	1.2	6.0	0	0	0	0	0	0	0	10.7	0	0	0	0	17.9
Oak Types	0	269.3	6.5	52.4	0	0	0	24.1	53.0	38.3	94.5	0	0	0	17.1	555.1
Planted Pines	0	0	45.1	16.3	152.0	0	17.6	0	0	0	0	0	0	0	0	230.9
Sand, Soil	13.5	0	0	0	0	0	0	0	0	0	0	0	0	0	0	13.5
Upland Mixed Forest	0	0	6.9	0	0	0	0	0	0	0	0	0	0	0	0	6.9
<b>Total</b>	<b>315.7</b>	<b>408.7</b>	<b>187.8</b>	<b>196.9</b>	<b>283.7</b>	<b>41.8</b>	<b>23.4</b>	<b>40.4</b>	<b>53.0</b>	<b>201.6</b>	<b>105.2</b>	<b>0</b>	<b>0</b>	<b>0</b>	<b>17.1</b>	<b>1875.3</b>

**PROPOSED TREATMENTS  
NO LIMITING FACTORS**



S  
t  
a  
n  
d

Treatment Name	Acres	Stage1 CoverType	Size Density	Stand Age	Treatment Type	Treatment Method	Cover Type Objective
<b>4 73075004 FH-FHar</b>	5.4	42221 - Natural Jack Pine, Mixed Deciduous	High Density Pole	94	Harvest	Clearcut with Reserves	Planted White Pine, Mixed Deciduous

Rev Low level of pine rust. Stand 6 meets greenup requirements. Au Gres soils are too wet to replant to red pine. Should be jack pine/oak stand, but oak/jack pine is also acceptable if natural oak regen is vigorous.

Rev Final harvest, retaining all oak for mast. Green mark trees in vicinity of any campsites or exclude campsites from cutting unit, and do not place landings, skid trails or roads in any campsites.

Next Steps: Direct seed to jack pine.

<b>9 73075009 FH-FinHar</b>	5.3	42221 - Natural Jack Pine, Mixed Deciduous	Medium Density Pole	95	Harvest	Clearcut with Reserves	Oak, Pine
-----------------------------	-----	--	---------------------	----	---------	------------------------	-----------

Rev Good oak regen, 30% >4.5 ft tall. Shortwood spec. to leave tops for blocking unauthorized ORV trails.

Rev Final harvest. Green mark 10 BA oak for retention. Expect stand to regen to oak with pine. Acceptable to have planted pine with oak if stand has to be planted. Green mark trees in vicinity of any campsites or exclude campsites from cutting unit, and do not place landings, skid trails or roads in any campsites.

Next Steps: Interplant red (1) or jack (2) pine if regen inadequate.

<b>13 73075013 Fn Hrv</b>	2.6	4129 - Mixed Oak	Medium Density Log	81	Harvest	Clearcut with Reserves	Black, N. Pin Oak
---------------------------	-----	------------------	--------------------	----	---------	------------------------	-------------------

Rev  
Cmnt:

Rev Final harvest. Green mark Jack pine, White Oak and Pin Oak on steep areas for retention by BA. Harvest out of YOE with C71 st 85 (same stand).

Spec: Either a pure oak or J or R and oak mix is an acceptable outcome.

Next Steps: Evaluate in 4 yrs: interplant JP or RP if needed.

<b>14 73075014 Shelt</b>	59.5	4129 - Mixed Oak	Medium Density Log	94	Harvest	Shelterwood	White, Black, N. Pin Oak
--------------------------	------	------------------	--------------------	----	---------	-------------	--------------------------

Rev Moderate, uniform stocking of oak seedlings. Expect oak stand with jack pine. Plant to red (1) or jack (2) pine if regen inadequate. A pine stand with oak is acceptable outcome.

Rev Shelterwood seed harvest. Green mark 20 BA including some jack pine for seed trees/retention. Do not cut any white oak, red pine or white pine. Use shortwood spec. to leave oak tops to block unauthorized ORV trails. Green mark trees in vicinity of any campsites or exclude campsites from cutting unit, and do not place landings, skid trails or roads in any campsites.

Next Steps: Possibly burn after harvest if needed and feasible.

<b>18 73075018 Fn Hrv</b>	14.3	4122 - Oak, Pine	Medium Density Log	95	Harvest	Clearcut with Reserves	Oak, Pine
---------------------------	------	------------------	--------------------	----	---------	------------------------	-----------

Rev Expect good mixed oak/red pine/jack pine stand. Acceptable to have pine or oak dominant.

Rev Final harvest oak, marking 10 BA for mast, visual. Do not cut any red pine or white oak. Shortwood spec to leave tops to block unauthorized ORV trails. Green mark trees in vicinity of any campsites or exclude campsites from cutting unit, and do not place landings, skid trails or roads in any campsites.

Next Steps: Scarify to control competition from heavy sedge ground cover.



S  
t  
a  
n  
d

Treatment Name	Acres	Stage1 CoverType	Size Density	Stand Age	Treatment Type	Treatment Method	Cover Type Objective
<b>19 73075019 FnHrv</b>	20.1	4122 - Oak, Pine	High Density Pole	76	Harvest	Clearcut with Reserves	Oak, Pine

Rev Vigor too low for shelterwood (residual and shoots will be too decadent to regenerate stand). 2/3 of pine and oak understory is suppressed. Adequate natural regen is expected, but plant to red pine (1) or jack pine (2) if inadequate. Stand will be pine/oak or oak/pine; either is acceptable.  
Cmnt:

Rev Final harvest, using shortwood spec to leave oak tops to control unauthorized ORV trails. 2" spec on pine to sanitize from rust, 4" spec on oak to retain advanced regen. Adjust price accordingly. Green mark trees in vicinity of any campsites or exclude campsites from cutting unit, and do not place landings, skid trails or roads in any campsites. Mark 7 BA oak for retention.  
Spec:

Next  
Steps:

<b>25 73075025 Sd Tr</b>	16.4	4129 - Mixed Oak	Medium Density Log	90	Harvest	Seed Tree with Reserves	Oak, Aspen
--------------------------	------	------------------	--------------------	----	---------	-------------------------	------------

Rev Good seedling stocking but < 4.5 ft tall. Expect oak/aspen or aspen/oak stand. Either outcome is acceptable. Aspen component of stand should increase.  
Cmnt:

Rev Seed tree harvest. Leave all white oak and white pine, green mark additional large oak to reach total residual BA of 15. Green mark trees in vicinity of any campsites or exclude campsites from cutting unit, and do not place landings, skid trails or roads in any campsites.  
Spec:

Next  
Steps:

<b>26 73075026 Fn Hrv</b>	5.8	4130 - Aspen	High Density Log	51	Harvest	Clearcut with Reserves	Aspen, Oak
---------------------------	-----	--------------	------------------	----	---------	------------------------	------------

Rev Lot of oak seedlings < 4.5 ft tall. High SI stand (70). Will be aspen/oak stand again. Oak may increase as component of stand. Any percent mix of these spp is acceptable.  
Cmnt:

Rev Final harvest leaving 15 BA oak for retention, including visual along Grim Rd. Green mark trees in vicinity of any campsites or exclude campsites from cutting unit, and do not place landings, skid trails or roads in any campsites.  
Spec:

Next  
Steps:

<b>28 73075028 Fn Hrv</b>	7.3	42120 - Planted Jack Pine	High Density Pole	51	Harvest	Clearcut with Reserves	Mixed Upland Deciduous with Conifer
---------------------------	-----	---------------------------	-------------------	----	---------	------------------------	-------------------------------------

Rev Do not re-plant to jack or red pine: too much hardwood competition. Block access road after sale and remove berm when time to plant. Expect mixed hardwood stand, but interplant white pine if regen inadequate. pine/hardwood or hardwood/pine stand is acceptable.  
Cmnt:

Rev Final harvest, reserving all oak and cherry. 4" spec on maple hardwood saps  
Spec:

Next  
Steps: Re-plant to white pine if regen inadequate.

<b>33 73075033 Thin</b>	11.5	42110 - Planted Red Pine	High Density Pole	35	Harvest	Systematic Thinning	Planted Red Pine
-------------------------	------	--------------------------	-------------------	----	---------	---------------------	------------------

Rev 3rd row thin to 110 BA, creating rows. Best tree in place regardless of species; maintain as mixed stand.  
Cmnt:

Next  
Steps:

**PROPOSED TREATMENTS  
NO LIMITING FACTORS**



S  
t  
a  
n  
d

Treatment Name	Acres	Stage1 CoverType	Size Density	Stand Age	Treatment Type	Treatment Method	Cover Type Objective
<b>34 73075034 Fin Hrv</b>	15.6	4130 - Aspen	High Density Pole	44	Harvest	Clearcut with Reserves	Aspen

Rev Upland: draws between steep hills near river are not riparian. Will regenerate to aspen stand.  
Cmnt:

Rev Final harvest, reserving all oak and pine. Use current clearing as landing.  
Spec:

Next  
Steps:

<b>60 73075060 Sd Tr</b>	10.1	4129 - Mixed Oak	Low Density Log	69	Harvest	Seed Tree with Reserves	White, Black, N. Pin Oak
--------------------------	------	------------------	-----------------	----	---------	-------------------------	--------------------------

Rev Harvest should further stimulate regen. Regenerating fairly well but oak saps are still less canopy cover than supercanopy. Will be low volume but easy access. New stand will be oak.  
Cmnt:

Rev Harvest remainder of supercanopy, retaining 10 BA for seed/mast/visual.  
Spec:

Next  
Steps:

<b>79 73075079 Shltrwd</b>	22.1	4129 - Mixed Oak	High Density Log	78	Harvest	Shelter Wood with Reserves	Black, N. Pin Oak
----------------------------	------	------------------	------------------	----	---------	----------------------------	-------------------

Rev Easy road access.  
Cmnt:

Rev Shelterwood harvest. Mark 40 BA of best mature oak for seed trees. Retain all red oak and white oak, plus some aspen and red maple. DO NOT CUT RED PINE.  
Spec:

Next  
Steps:

<b>5 73075005 - Plant</b>	13.8	42121 - Planted Jack Pine, Mixed Deciduous		16	Tree Planting	Hand Plant	Planted Mixed Pine
---------------------------	------	--	--	----	---------------	------------	--------------------

Rev Portion of former stand 3 that did not regen well.  
Cmnt:

Rev Interplant red pine  
Spec:

Next  
Steps:

<b>12 73075012 - Plant</b>	6.9	4319 - Mixed Upland Forest		17	Tree Planting	Hand Plant	Planted Mixed Pine
----------------------------	-----	----------------------------	--	----	---------------	------------	--------------------

Rev Poor regen.  
Cmnt:

Rev Interplant red pine.  
Spec:

Next  
Steps:

<b>73 NF_73075073 Plnt</b>	8.8	Unspecified		0	Tree Planting	Hand Plant	Planted White Pine, Mixed Deciduous
----------------------------	-----	-------------	--	---	---------------	------------	-------------------------------------

Rev Treed bog, harvested 2006. Some oak, aspen regen. SW 3/4 of stand is Kinross soil and should not be planted. NE 9 ac is Grayling-Croswell-Au Gres soil assn.  
Cmnt:

Rev Plant NE 9 acres with jack pine.  
Spec:

Next  
Steps:

**PROPOSED TREATMENTS  
NO LIMITING FACTORS**



S  
t  
a  
n  
d

Treatment Name	Acres	Stage1 CoverType	Size Density	Stand Age	Treatment Type	Treatment Method	Cover Type Objective
<b>76 73075076-Seed</b>	12.1	4129 - Mixed Oak		4	Tree Seeding	Hand Seed	Planted White Pine, Mixed Deciduous

Rev 30-40% lowland. Stand understocked. SI 46 per old OI- looks right. 19 ac S of road, NE corner, and narrow neck just N of road is denser and needs no  
Cmnt: treatment. Middle portion is combination of Croswell soil which could be planted to red pine, and wetter Au Gres soils, which should not be planted.

Rev Direct seed jack pine on about 10 suitable acres in center of stand.

Spec:

Next

Steps:

<b>46 NF_73075046 Seed</b>	35.5	Unspecified		0	Tree Seeding	Hand Seed	Planted Jack Pine
----------------------------	------	-------------	--	---	--------------	-----------	-------------------

Rev Mostly dry mid june. 10% cover of oak, red maple and aspen. harvested 2004 and has not regenerated.

Cmnt:

Rev Direct seed Jack pine in winter with snowmobile.

Spec:

Next

Steps:

<b>52 73075052 Brn</b>	4.5	4129 - Mixed Oak		69	Prescribed Burn	Unspecified	Mixed Oak
------------------------	-----	------------------	--	----	-----------------	-------------	-----------

Rev

Cmnt:

Rev Burn if feasible to stimulate oak regen. Good road access.

Spec:

Next

Steps:

**Total Treatment  
Acreage Proposed: 277.6**

**PROPOSED TREATMENTS  
WITH LIMITING FACTORS**



S  
t  
a  
n  
d

Treatment Name	Acres	Stage1 Cover Type	Size Density	Stand Age	Treatment Type	Treatment Method	Cover Type Objective	Page 1 of 1
----------------	-------	-------------------	--------------	-----------	----------------	------------------	----------------------	-------------

---

Limiting Factor  
and Comment:

Rev  
Cmnt:

Rev  
Spec:

Next  
Steps:

No Treatment  
Reason

---

**Total Treatment  
Acreage Proposed:        0**



**PROPOSED SPECIAL CONSERVATION AREA\* (SCA) DETAILS**

\* This is a partial list of SCAs for this compartment. Not included are those areas identified under other Department initiatives (Natural Rivers, Deer Wintering Areas, etc.). Those will be identified in separate, future map and report products.

Inventory Method: IFMAP

Stand	SCA Name	Acres	Comments



## DEDICATED CONSERVATION AREA DETAILS

\* This is a list of Dedicated Biodiversity Areas for this compartment along with a 1/4 mile buffer surrounding the compartment. Refer to Dedicated Conservation Area Map for areas that the below listed Conservation Areas are located.

ERA = Ecological Reference Area  
 HCVA = High Conservation Value Area  
 SCA = Special Conservation Area

Conservation Area	Type	Description
SCA	Habitat Area	An area that provide some specific need for the life cycle of wildlife species, including State Wildlife Areas and Waterfowl Production Areas, deer wintering complexes in lowland conifer communities, grassland openings and savannas. Habitat areas are distinct from critical habitat designated for recovery of endangered or threatened species (such as Kirtland's warbler or piping plover areas) in that they are more general in nature, are not primarily associated with threatened or endangered species, and are not covered by species recovery plans that are developed in cooperation with Federal agencies.
SCA	Potential Old Growth Areas	This category contains stands were identified for a broad range of reasons and were coded in the OI database as stand condition 8 as potential old growth (POG). Approximately 310,000 acres have been identified through the Operations Inventory (OI)/Compartment Review process. For stands in Year of Entry 2008 and forward, potential old growth is managed for the identified objective until it is: 1) vetted through the Biodiversity Conservation Planning Process (BCPP) and given a specific designation and objective (as an ERA, HCVA, or other type of SCA) and is released from the potential old growth designation; or 2) it is released from the potential old growth designation via the Compartment Review process.