



**GAYLORD FOREST MANAGEMENT UNIT
COMPARTMENT REVIEW PRESENTATION**

COMPARTMENT: 149

ENTRY YEAR: 2010
Compartment Acreage: 1,533
County: Cheboygan

Revision Date: April 29, 2008

Stand Examiner: Dan Heckman

Legal Description: T34N R03W Sections 20, 21, 28, 29

Management Goals: To provide for the protection, integrated management and responsible use of a healthy, productive and undiminished forest resource base for the social, recreational, environmental and economic benefit of the State of Michigan.

Soil and Topography: Cheboygan- Blue Lake Association covers the eastern part of this compartment. It contains nearly level to very steep terrain with well drained and moderately well drained sandy soils. Rubicon- Blue Lake Association covers the Western ½ of the compartment. It contains gently rolling to very steep terrain, excessively drained and well drained sandy soils.

Ownership Patterns, Development, and Land Use in and Around the Compartment: This compartment is fairly dispersed across 4 sections with one isolated private forty and one isolated State forty. This compartment is dominated by even aged medium quality hardwood, with aspen and red pine as two additional major components.

Unique, Natural Features:

Archeological, Historical, and Cultural Features:

Special Management Designations or Considerations:

Watershed and Fisheries Considerations: This compartment contains a portion of Berry Creek, a tributary to Pickerel Lake. Berry Creek has Type 1 trout stream regulations. A buffer (no clear-cut) of at least 100 feet should be maintained along Berry Creek.

Wildlife Habitat Considerations: This compartment lies west of Wolverine and contains mostly upland habitat consisting of aspen, red pine and hardwoods. The area contains a fair amount of grouse, woodcock, deer, turkey, and the occasional elk. Pine Marten tracks were observed in the hardwood areas of this compartment. This area receives a considerable amount of hunting pressure from both upland game hunters and deer hunters. The stands that have been clear cut previously have regenerated nicely. Stand 47 was a red pine stand that was clear cut the last rotation and regenerated into a nice mix of conifer and deciduous trees. Stands 15, 24, 36, 41, and 50 will be clear cut to add age class diversity for early successional species. Stands 39 and half of stand 4 will be thinned to increase structural diversity in the hardwood areas. Stands 27, 28, 40, and 42 are wildlife openings that will be maintained with occasional mowing and/or mechanical treatment.

Mineral Resource and Development Concerns and/or Restrictions: Surface sediments consist of ice-contact sand and gravel. The glacial drift thickness varies between 400 and 600 feet. The Devonian Traverse Group subcrops below the glacial drift. The Traverse is quarried for limestone elsewhere in the State. Gravel pits are located in Sections 29 & 32 and there is excellent potential. The nearest oil and gas production, the Antrim Shale gas play, is located several miles to the south. The Antrim Shale is thin to missing and there may not be any gas potential in this area. There are no leases in the Compartment.

Vehicle Access: There are several seasonal county and dirt roads which lead in to and/or near this compartment.

Survey Needs:

Recreational Facilities and Opportunities: This compartment contains a portion of the snowmobile trail (#767).

Fire Protection:

Additional Compartment Information:

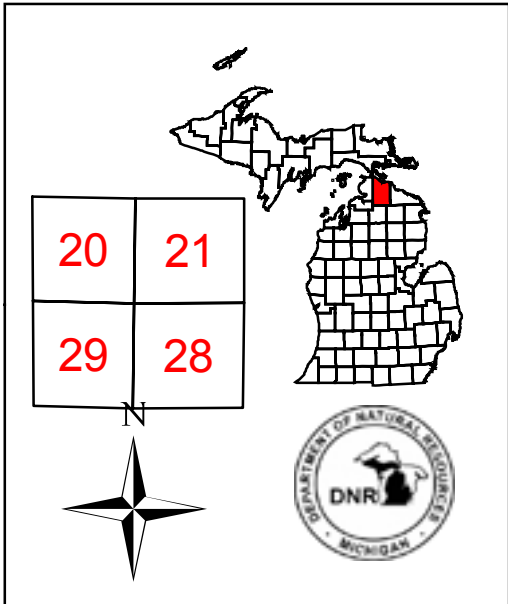
- **The following 5 reports from the Operations Inventory System (OIPC) are attached:**
 - ◆ **Cover Type by Age Class**
 - ◆ **Cover Type by Management Objective**
 - ◆ **Compartment Volume Summary**
 - ◆ **Proposed Treatments – No Limiting Factors**
 - ◆ **Proposed Treatments – With Limiting Factors**

- **The following information is displayed, where pertinent, on the attached compartment maps:**
 - ◆ **Base feature information, stand numbers, cover types**
 - ◆ **Proposed treatments**
 - ◆ **Proposed road access system**
 - ◆ **Suggested potential old growth**

Cover Type & Treatment Map

Compartment 149
 T34N, R03W, Sec. 20, 21, 28, 29
 County: Cheboygan
 Unit: Gaylord
 YOE: 2010
 Acres: 1,533 GIS Calculated
 Stand Examiner: Daniel Heckman
 Map Revised: 6/04/2008
 Map Phase: Pre-review

Multi-Part Stands
 Stand 11, 3 Parts, Split by stand 13
 Stand 15, 2 Parts, Split by stand 19
 Stand 21, 3 Parts, Split by stand 24
 Stand 24, 3 Parts, Split by stand 21
 Stand 34, 2 Parts, Split by stand 29
 Stand 27, 3 Parts, Split by stand 42



Legend

- Miris Corners
- Paved Road
- == Gravel Road
- - Poor Dirt Road
- Intermittent Stream/Drain
- Stream
- Lakes and Rivers All

Forest Stands

LVL3COVER

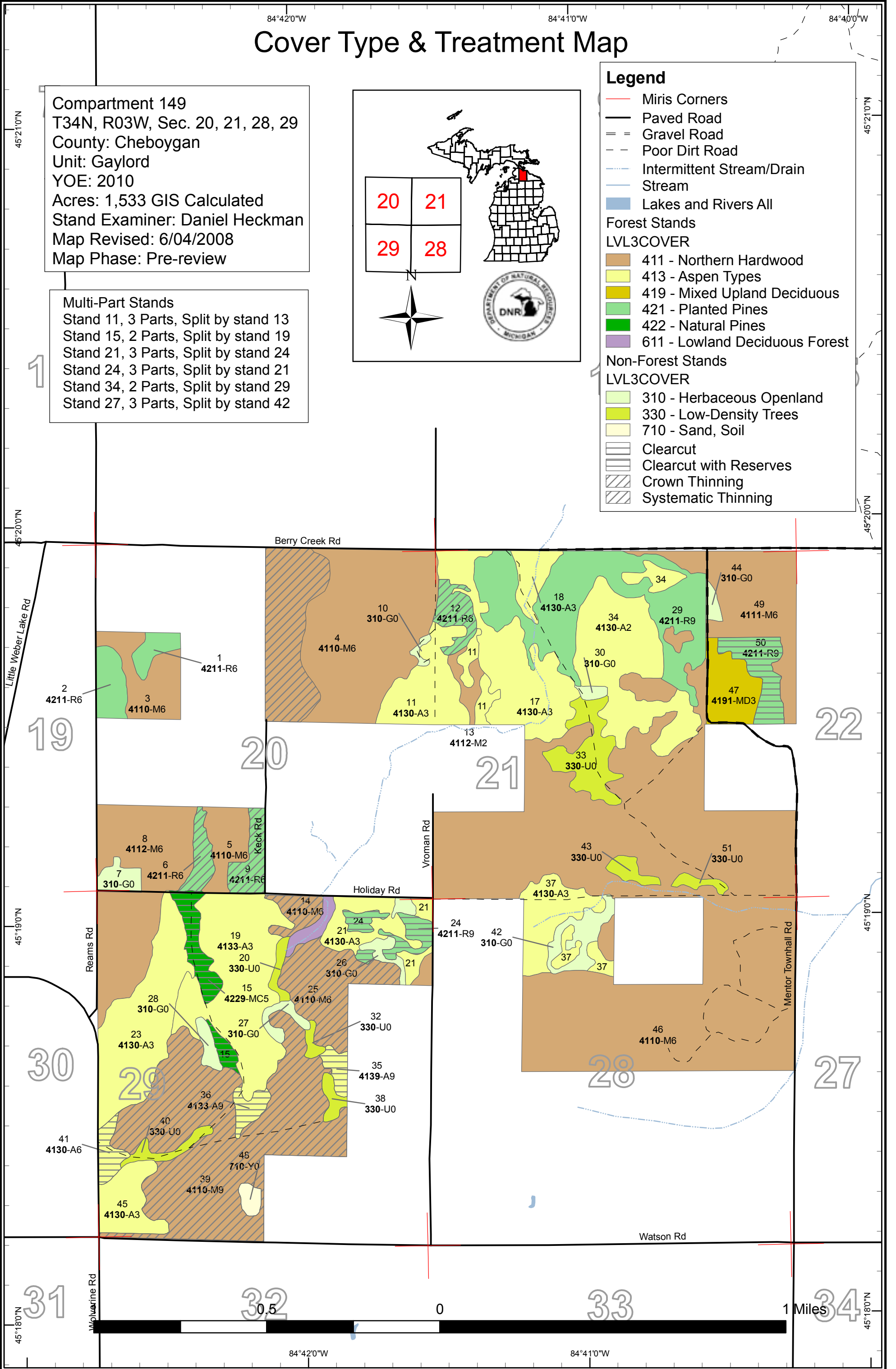
- 411 - Northern Hardwood
- 413 - Aspen Types
- 419 - Mixed Upland Deciduous
- 421 - Planted Pines
- 422 - Natural Pines
- 611 - Lowland Deciduous Forest

Non-Forest Stands

LVL3COVER

- 310 - Herbaceous Openland
- 330 - Low-Density Trees
- 710 - Sand, Soil

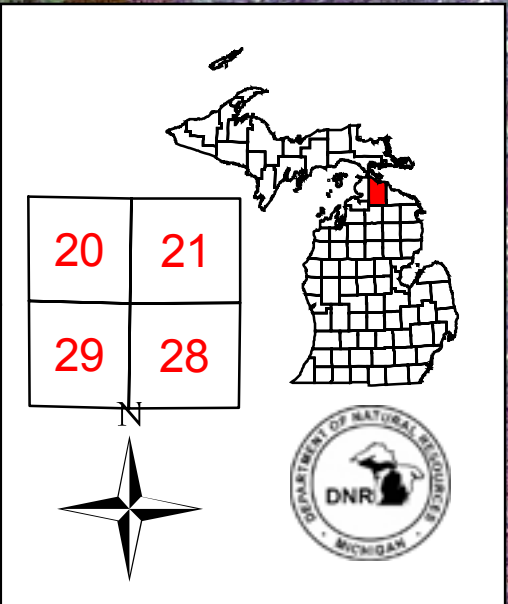
- ▨ Clearcut
- ▨ Clearcut with Reserves
- ▨ Crown Thinning
- ▨ Systematic Thinning



Stand Boundary Map

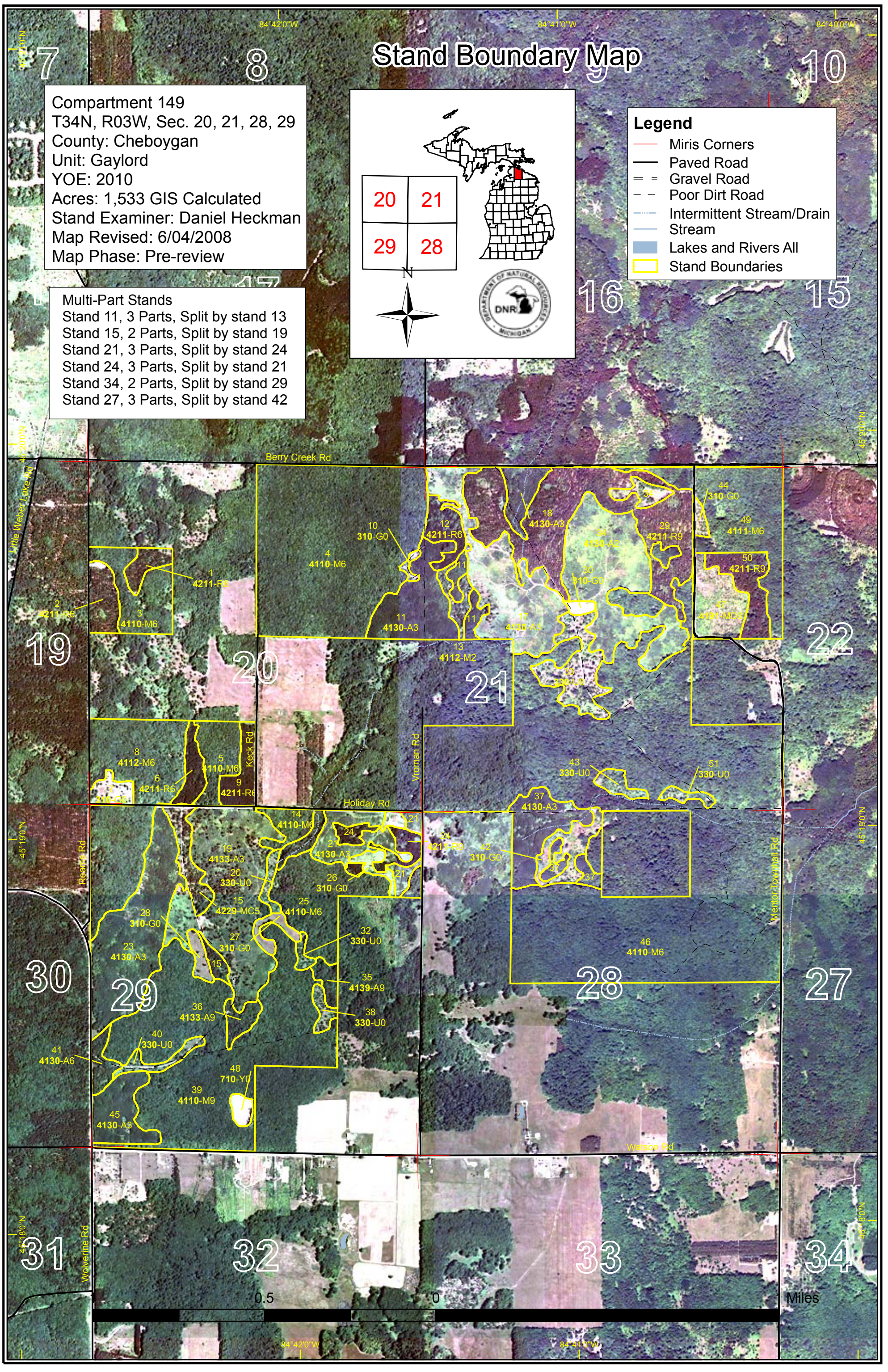
Compartment 149
 T34N, R03W, Sec. 20, 21, 28, 29
 County: Cheboygan
 Unit: Gaylord
 YOE: 2010
 Acres: 1,533 GIS Calculated
 Stand Examiner: Daniel Heckman
 Map Revised: 6/04/2008
 Map Phase: Pre-review

Multi-Part Stands
 Stand 11, 3 Parts, Split by stand 13
 Stand 15, 2 Parts, Split by stand 19
 Stand 21, 3 Parts, Split by stand 24
 Stand 24, 3 Parts, Split by stand 21
 Stand 34, 2 Parts, Split by stand 29
 Stand 27, 3 Parts, Split by stand 42



Legend

- Miris Corners
- Paved Road
- Gravel Road
- Poor Dirt Road
- Intermittent Stream/Drain
- Stream
- Lakes and Rivers All
- Stand Boundaries



**PROPOSED TREATMENTS
NO LIMITING FACTORS**



S
t
a
n
d

Treatment Name	Acres	Stage1 CoverType	Size Density	Stand Age	Treatment Type	Treatment Method	Cover Type Objective
4 004 Thin	44.0	4110 - Sugar Maple Association	High Density Pole	78	Harvest	Crown Thinning	Sugar Maple Association

Rev
Cmnt:

Rev Thin stand to 80 BA. No retention in treatment boundary, as the eastern 2/3 of this stand will not be treated this YOE.
Spec

Next
Steps:

6 006 RP Marking	7.6	42110 - Planted Red Pine	High Density Pole	47	Harvest	Crown Thinning	Planted Red Pine
-------------------------	-----	--------------------------	-------------------	----	---------	----------------	------------------

Rev
Cmnt:

Rev Thin stand to 120 BA, mark to cut. No retention, small acreage.
Spec

Next
Steps:

9 009- RP Marking	10.6	42110 - Planted Red Pine	High Density Pole	47	Harvest	Crown Thinning	Planted Red Pine
--------------------------	------	--------------------------	-------------------	----	---------	----------------	------------------

Rev
Cmnt:

Rev Thin stand to 120 BA, mark to cut, No retention, small acreage.
Spec

Next
Steps:

12 012-RP 3rd row	9.9	42110 - Planted Red Pine	High Density Pole	48	Harvest	Systematic Thinning	Planted Red Pine
--------------------------	-----	--------------------------	-------------------	----	---------	---------------------	------------------

Rev
Cmnt:

Rev Third row thin, no need to mark rows. No retention, small acreage.
Spec

Next
Steps:

14 014- Hwd thin	7.8	4110 - Sugar Maple Association	High Density Pole	71	Harvest	Crown Thinning	Sugar Maple Association
-------------------------	-----	--------------------------------	-------------------	----	---------	----------------	-------------------------

Rev
Cmnt:

Rev Thin stand to 80 BA, no retention, small acreage, lots of hwd in compartment not being treated.
Spec

Next
Steps:

15 015-FH JP/ASP	14.2	42290 - Natural Mixed Pine	Medium Density Pole	54	Harvest	Clearcut	Aspen, Mixed Pine
-------------------------	------	----------------------------	---------------------	----	---------	----------	-------------------

Rev
Cmnt:

Rev Final harvest, acceptable regen will be a mix of aspen and pine. No retention, small acreage.
Spec

Next
Steps:

**PROPOSED TREATMENTS
NO LIMITING FACTORS**



S
t
a
n
d

Treatment Name	Acres	Stage1 CoverType	Size Density	Stand Age	Treatment Type	Treatment Method	Cover Type Objective
24 024-RP FH w/res	10.7	42110 - Planted Red Pine	High Density Log	51	Harvest	Clearcut with Reserves	Mixed Upland Deciduous with Conifer

Rev
Cmnt:

Rev Final harvest RP, leave 20-30 BA of pine for retention and age, species, and structural diversity.
Spec

Next
Steps:

25 025-Hwd thin	35.4	4110 - Sugar Maple Association	High Density Pole	71	Harvest	Crown Thinning	Sugar Maple Association
-----------------	------	--------------------------------	-------------------	----	---------	----------------	-------------------------

Rev
Cmnt:

Rev Thin stand to 80 BA, will follow retention guidelines.
Spec

Next
Steps:

35 035- FH aspen	4.5	4139 - Aspen, Mixed Deciduous	High Density Log	54	Harvest	Clearcut	Aspen
------------------	-----	-------------------------------	------------------	----	---------	----------	-------

Rev
Cmnt:

Rev Final Harvest, no retention, small acreage.
Spec

Next
Steps:

39 039-Hwd Thin	144.7	4110 - Sugar Maple Association	High Density Log	68	Harvest	Crown Thinning	Sugar Maple Association
-----------------	-------	--------------------------------	------------------	----	---------	----------------	-------------------------

Rev
Cmnt:

Rev Thin stand to 80 BA, will follow retention guidelines.
Spec

Next
Steps:

41 041- FH asp	6.1	4130 - Aspen	High Density Pole	59	Harvest	Clearcut	Aspen, Mixed Deciduous
----------------	-----	--------------	-------------------	----	---------	----------	------------------------

Rev
Cmnt:

Rev Final harvest, acceptable regen will be aspen, mixed hwd, and JP.
Spec

Next
Steps:

50 050-FH w/Res	15.4	42110 - Planted Red Pine	High Density Log	68	Harvest	Clearcut with Reserves	Planted Red Pine
-----------------	------	--------------------------	------------------	----	---------	------------------------	------------------

Rev
Cmnt:

Rev Final harvest, leave 2-3 RP per acre for age, species, and structural diversity. Leave small retention pocket along south boundary of stand. Acceptable regen will be a mix of natural RP, aspen, and hardwood.
Spec

Next
Steps:

S
t
a
n
d

Gaylord Mgt. Unit
Inventory Method: IFMAP

**PROPOSED TREATMENTS
NO LIMITING FACTORS**

Compartment: 149 Entry Yr: 2010
Date 06/04/2008



Treatment Name	Acres	Stage1 CoverType	Size Density	Stand Age	Treatment Type	Treatment Method	Cover Type Objective
36 36 FH asp w res	5.5	4133 - Aspen, Mixed Pine	High Density Log	54	Harvest	Clearcut with Reserves	Aspen, Mixed Pine

Rev
Cmnt:

Rev Final Harvest, leave all RP, WP. No retention, small acreage. Acceptable regen will be mixed deciduous saplings and some pine.

Spec
Next
Steps:

**Total Treatment
Acreage Proposed: 316.5**

**PROPOSED TREATMENTS
WITH LIMITING FACTORS**



S
t
a
n
d

Treatment Name	Acres	Stage1 Cover Type	Size Density	Stand Age	Treatment Type	Treatment Method	Cover Type Objective	Page 1 of 1
----------------	-------	-------------------	--------------	-----------	----------------	------------------	----------------------	-------------

Limiting Factor and Comment:

Rev Cmnt:

Rev Spec:

Next Steps:

No Treatment Reason

**Total Treatment
Acreage Proposed: 0**



PROPOSED SPECIAL CONSERVATION AREA* (SCA) DETAILS

* This is a partial list of SCAs for this compartment. Not included are those areas identified under other Department initiatives (Natural Rivers, Deer Wintering Areas, etc.). Those will be identified in separate, future map and report products.

Inventory Method: IFMAP

Stand	SCA Name	Acres	Comments
<hr/>			
<hr/>			