



**ESCANABA FOREST MANAGEMENT UNIT
COMPARTMENT REVIEW PRESENTATION**

COMPARTMENT 74 ENTRY YEAR: 2010
Compartment Acreage: 1226 County Delta

Last Revision: July 25, 2008

Stand Examiner: Dan McNamee, FMFMD, Bill Rollo and Craig Albright, Wildlife Division

Legal Description: T37N-R24W, Sections 31, 32, 33

Management Goals: Timber harvest will be occurring in 3 stands during this treatment period. Two of the stands will be using a shelterwood-seed treatment and one stand will be receiving an improvement treatment. This compartment has been actively harvested in the past and will continue to be treated to improve the overall growth and productivity of the forest resource.

Soil and Topography: Mostly lowground. Upland is level to gently rolling. Major soils found on the uplands are Rubicon, Roscommon, and Croswell sands. Lowground soils are Deford, Cathro and Carbondale mucks.

Ownership Patterns, Development, and Land Use in and Around the Compartment: Surrounding land is mostly State ownership with some private 40-80 acre parcels. There are also some corporate lands located within this compartment.

Unique, Natural Features: N/A

Archeological, Historical, and Cultural Features: N/A

Special Management Designations or Considerations:

Watershed and Fisheries Considerations:

Wildlife Habitat Considerations: Sixty-eight percent of this compartment is composed of wet, lowland cover types such as cedar/swamp conifer (45%), lowland poplar (12%), lowland brush (6%), and swamp hardwoods (5%). The lowland conifers provide important winter cover for wildlife and will be maintained in a closed canopy condition. There are very few treatment opportunities in upland forest types due to the young age of the stands. A belt of stands have been designated a "Special Conservation Area" to provide mature (unmanaged) cedar and hemlock habitat that connects to Compartment 75 to the north. Three grass openings will be prescribed for maintenance and herbaceous plantings to provide partnership opportunities with local sportsman clubs.

Mineral Resource and Development Concerns and/or Restrictions: Surface sediments consist of lacustrine (lake) sand and gravel and medium-textured glacial till. The glacial drift thickness varies between 10 and 50 feet. The Ordovician Trenton Group underlies the glacial drift. The Trenton is quarried for stone west of Escanaba. This area has not been leased previously for metallic exploration. Gravel pits are located in the area and potential appears to be good on the uplands. No economic oil and gas production has been found in the UP. Mostly swamp. Upland is level to gently rolling.

Vehicle Access: Survey Needs: None

Recreational Facilities and Opportunities: Hunting, trapping, and dispersed camping. Forest Island ORV Trail is located within the compartment

Fire Protection: The timber types within this compartment are not prone to a large fire. If a fire should get started, access to most of the compartment is good, allowing initial attack to help keep fires small.

Additional Compartment Information:

- **The following 5 reports from the Operations Inventory System (OIPC) are attached:**
 - ◆ **Cover Type by Age Class**
 - ◆ **Cover Type by Management Objective**
 - ◆ **Compartment Volume Summary**
 - ◆ **Proposed Treatments – No Limiting Factors**
 - ◆ **Proposed Treatments – With Limiting Factors**

- **The following information is displayed, where pertinent, on the attached compartment maps:**
 - ◆ **Base feature information, stand numbers, cover types**
 - ◆ **Proposed treatments**
 - ◆ **Proposed road access system**
 - ◆ **Suggested potential old growth**

8/12/2008 3:18:58 PM

Michigan Department of Natural Resources - Operations Inventory System
Individual Compartment Report

ESCANABA RIVER STATE FOREST

ESCANABA FOREST MGT UNIT

DELTA COUNTY

COMPARTMENT: 74

Table 3

(acres shown in boxes)

STAND AGE CLASS

COVER TYPE	Not Coded	0-9	10-19	20-29	30-39	40-49	50-59	60-69	70-79	80-89	90-99	100-109	110-119	120-129	130-139	140-149	150-159	All Aged	Total
Aspen		27		78	45	22			2										174
Black Spruce		4																	4
Cedar												185	204	72					461
Grass	13																		13
Hemlock		4											54	17					75
LowInd Brush									33			29	7						69
LowInd Poplr			96	21	34	1													152
Marsh	7																		7
Mx Swmp Cnfr						13						63	16						92
Red Pine		1										4							5
Spruce Fir						8				13									21
Swamp Hrdwds				3		2		10	40									6	61
Upland Hdwds					18	4			16		8							7	53
Water	10																		10
White Pine			29																29
Total	30	36	125	102	97	50		10	91	13	8	281	281	89				13	1226

8/12/2008 3:19:00 PM

Michigan Department of Natural Resources - Operations Inventory System
Individual Compartment Report

ESCANABA RIVER STATE FOREST

ESCANABA FOREST MGT UNIT

DELTA COUNTY

COMPARTMENT: 74

Table 3A

(acres shown in boxes)

MANAGEMENT OBJECTIVE TYPE

COVER TYPE	A	S	V	C	G	H	J	I	L	P	N	Q	X	O	B	R	K	Y	F	E	T	D	U	M	Z	W	Total	
A Aspen	169																		5								174	
S Black Spruce												4															4	
C Cedar				461																							461	
G Grass					13																						13	
H Hemlock						75																					75	
L LowInd Brush									69																		69	
P LowInd Poplr				9						143																	152	
N Marsh											7																7	
Q Mx Swmp Cnfr												92															92	
R Red Pine																5											5	
F Spruce Fir																			21								21	
E Swamp Hrdwds																				61							61	
M Upland Hdwds																									53		53	
Z Water																									10		10	
W White Pine																										29	29	
Total	169			470	13	75			69	143	7	96				5			26	61					53	10	29	1226

ESCANABA RIVER STATE FOREST

ESCANABA FOREST MGT UNIT

DELTA COUNTY

COMPARTMENT: **74**

Table 10 - COMPARTMENT VOLUME SUMMARY - ALL STANDS

COMPARTMENT SUMMARY			
TOTAL VOLUME		CUT VOLUME	
Hardwood	4750 Cds	Hardwood	120 Cds
Hardwood	22 Mbf	Softwood	103 Cds
Softwood	13187 Cds	Softwood	7 Mbf
Softwood	312 Mbf	Sum CutVol	237 Cds
Sum TotVol	18605 Cds		
Total Cmpnt Acres		Acres Proposed For Cut.....	22
1226			

ESCANABA FOREST MGT UNIT

**Proposed Treatments
With NO Limiting Factors**

Compartment: 74

Entry Year: 2010

Stand	Cover Type	Acres	Age	Site Index	Mgt Obj	Condition	Method Cut	Harvest Priority	Cultural Need	FDF Status	
403	G0	2		65	grass	nonstocked		0	opening maintenance		
<p>Wld : GIS approximately 1.7 acres. As a cooperative project with a local sportsmen club, this opening will be planted into a wildlife mix if funds and personnel are available.</p>											
404	G0	1		60	grass	nonstocked		0	opening maintenance		
<p>Wld : GIS approximately 1.2 acres. As a cooperative project with a local sportsmen club, this opening will be planted into a wildlife mix if funds and personnel are available.</p>											
455	G0	1		70	grass	nonstocked		0	opening maintenance		
<p>Wld : GIS approximately 1.0 acres. As a cooperative project with a local sportsmen club, this opening will be planted into a wildlife mix if funds and personnel are available.</p>											
Total Acres.....		4									

ESCANABA FOREST MGT UNIT

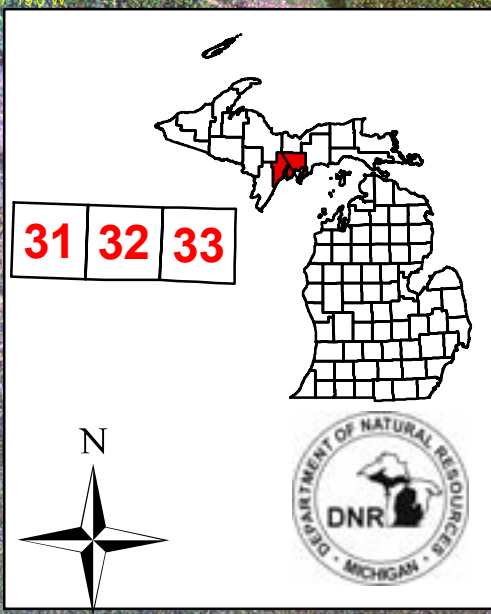
**Proposed Treatments
With Limiting Factors**

Compartment: 74

Entry Year: 2010

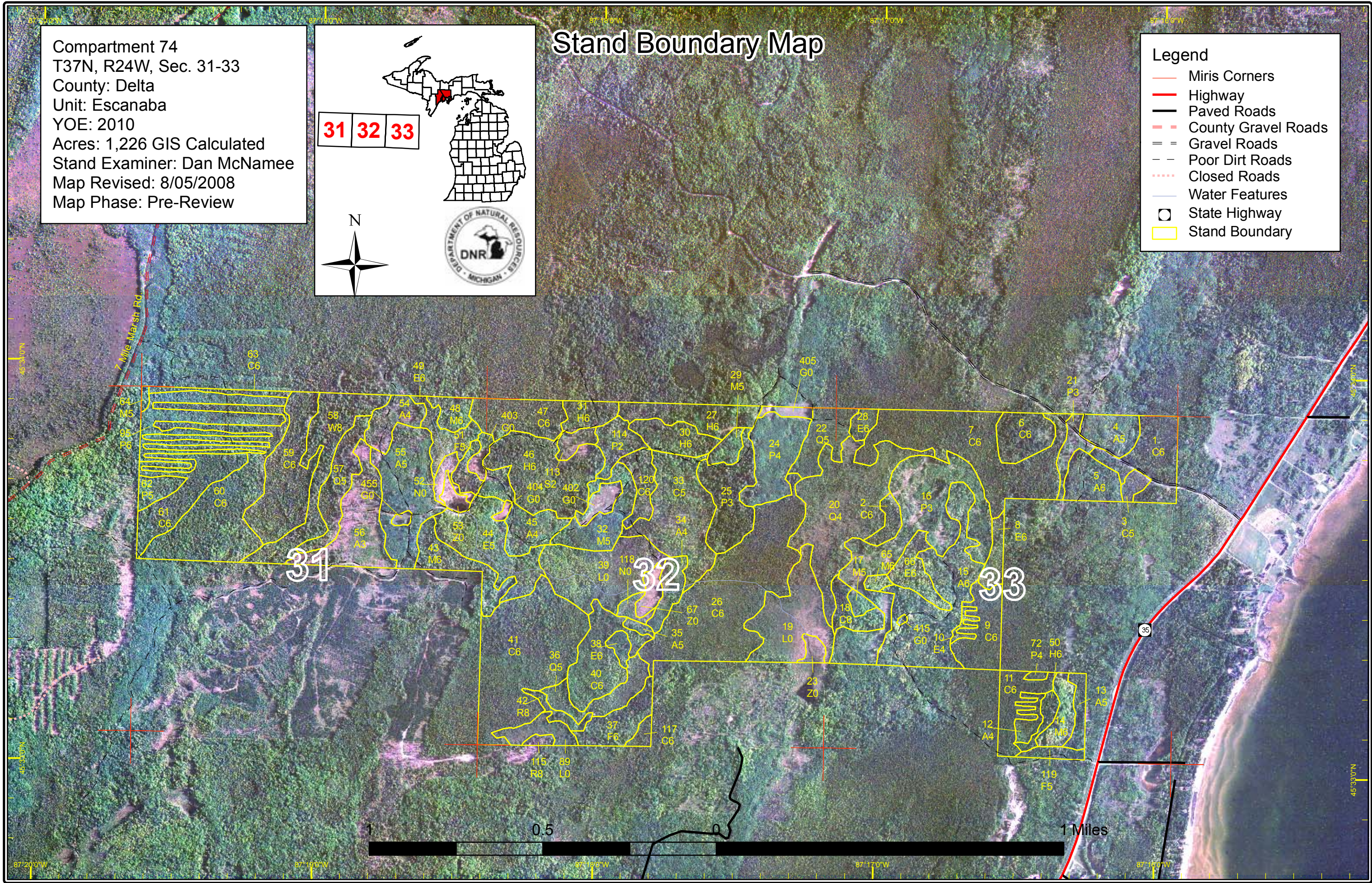
Stand	Cover Type	Acres	Age	Site Index	Mgt Obj	Condition	Method Cut	Harvest Priority	Cultural Need	fdf Status
13	A5	5	39	55	spruce-fir (uplands-including upland black spruce)	sparse	improvement	2		
<p>TREATMENT LIMITING FACTORS: Inadequate volume due to small acreage Adjacent landowner denies access</p> <p>comnts Fmd : In some places aspen is heavy and there is good balsam fir regen in the understory. It would be nice to harvest the mature aspen but there is not much volume.</p> <p>Wld : Concur with FMFMD.</p>										
37	F6	13	83	50	spruce-fir (uplands-including upland black spruce)	mature	shelterwood-seed	3		
<p>TREATMENT LIMITING FACTORS: Blocked by other physical obstacle</p> <p>comnts Fmd : Access is limited, may not be able to get to this stand. Most of the Aspen has been lost Spruce/ fir type is ready for harvest.</p> <p>Wld : Do not cut cedar. Concur with FMFMD.</p>										
42	R8	4	104	55	red pine	two aged	shelterwood-seed	3		
<p>TREATMENT LIMITING FACTORS: Blocked by other physical obstacle</p> <p>comnts Fmd : Ridge of pine. Access is difficult. Retain cedar if found within stand.</p> <p>Wld : Do not cut cedar. Concur with FMFMD.</p>										
Total Acres.....		22								

Compartment 74
T37N, R24W, Sec. 31-33
County: Delta
Unit: Escanaba
YOE: 2010
Acres: 1,226 GIS Calculated
Stand Examiner: Dan McNamee
Map Revised: 8/05/2008
Map Phase: Pre-Review



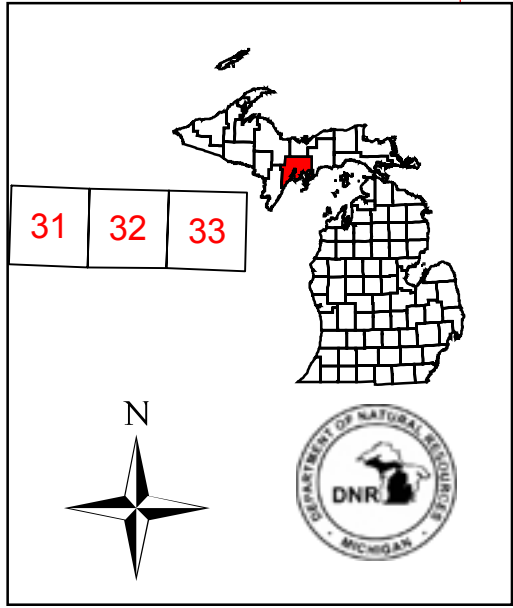
Stand Boundary Map

- Legend**
- Miris Corners
 - Highway
 - Paved Roads
 - County Gravel Roads
 - Gravel Roads
 - Poor Dirt Roads
 - Closed Roads
 - Water Features
 - State Highway
 - Stand Boundary



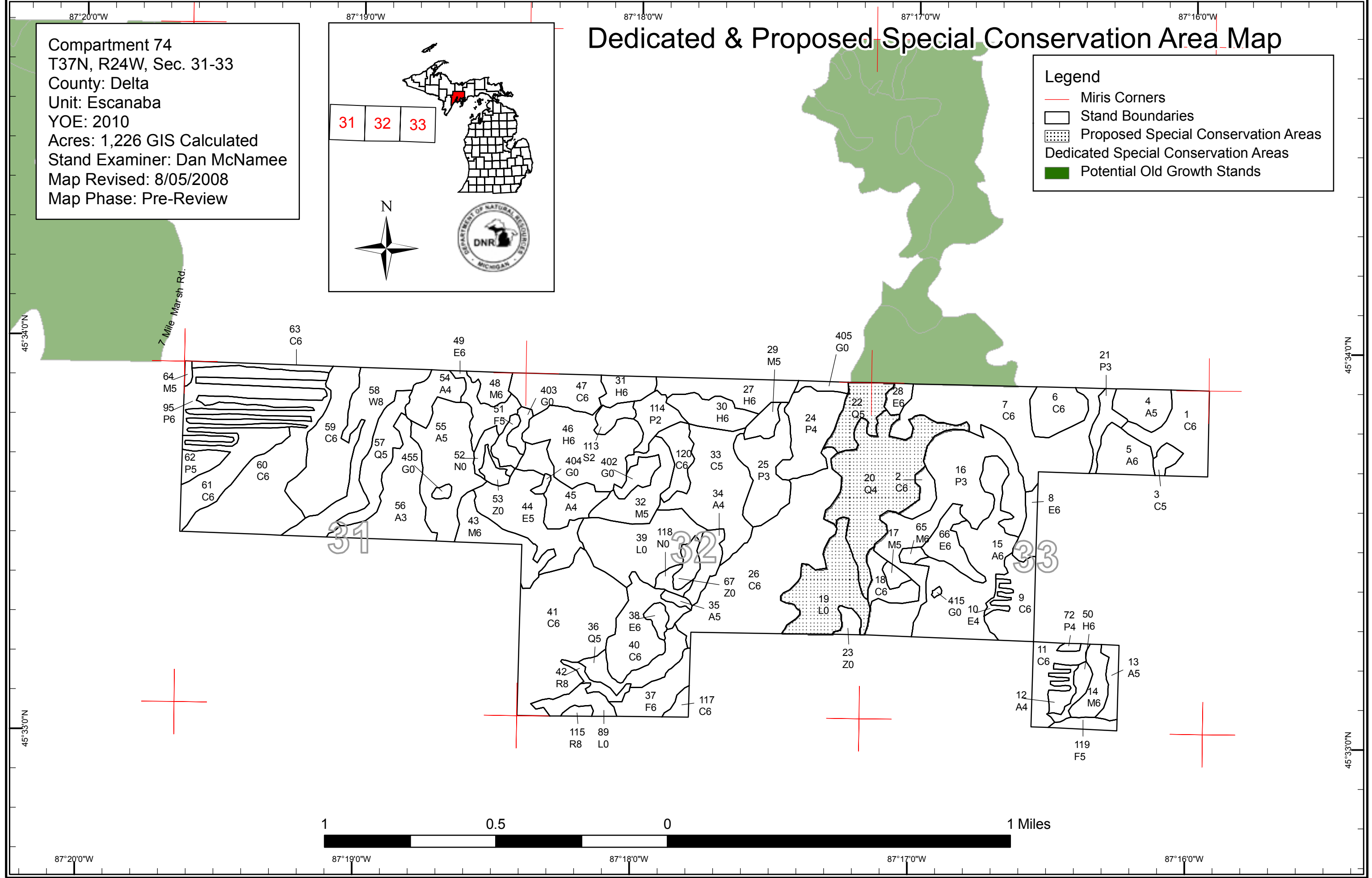
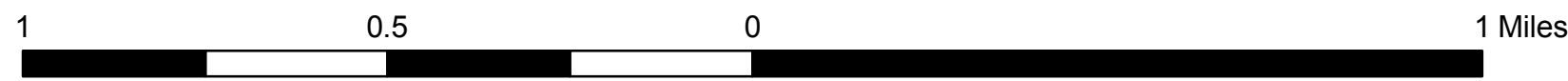
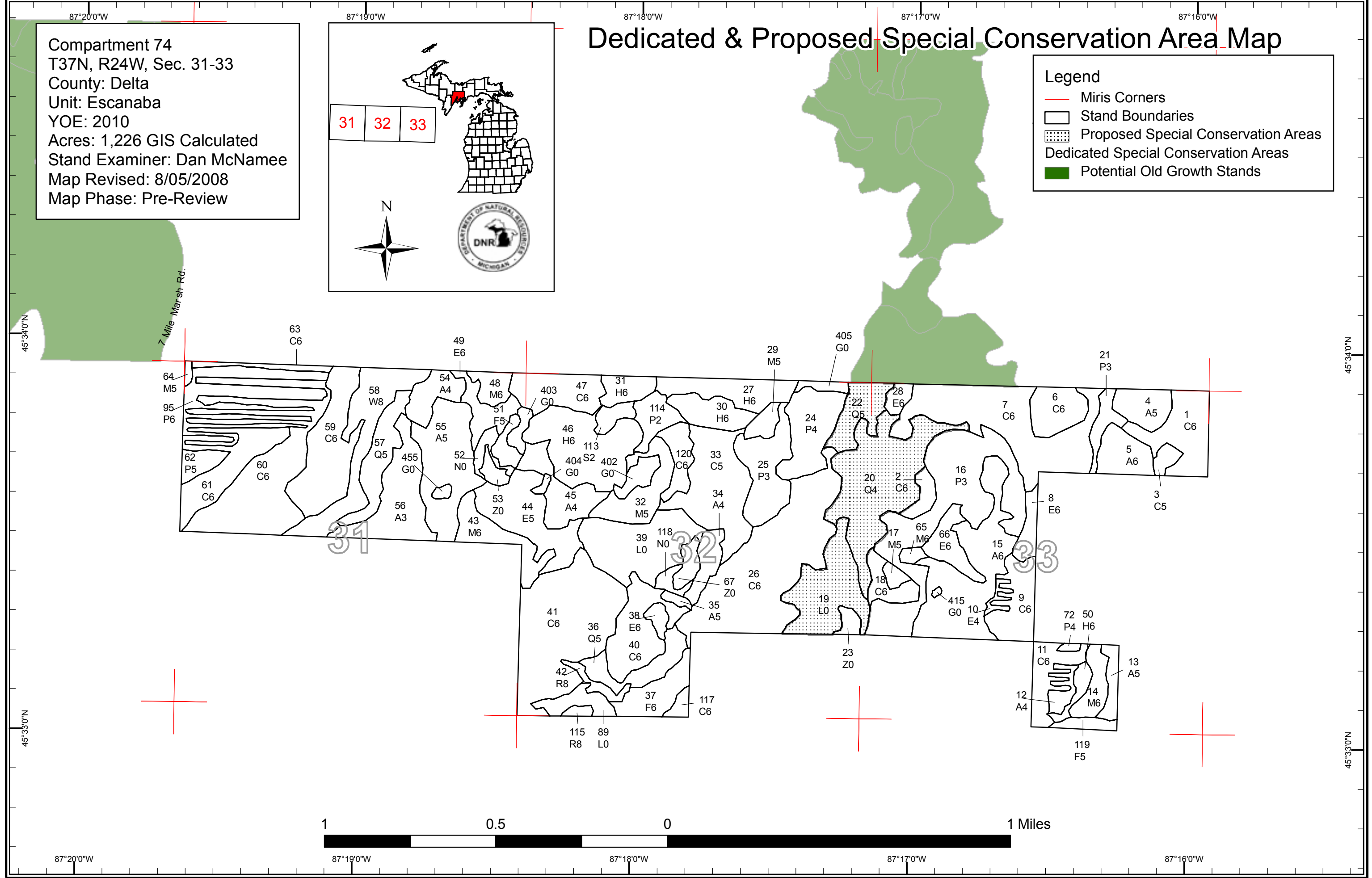
Dedicated & Proposed Special Conservation Area Map

Compartment 74
 T37N, R24W, Sec. 31-33
 County: Delta
 Unit: Escanaba
 YOE: 2010
 Acres: 1,226 GIS Calculated
 Stand Examiner: Dan McNamee
 Map Revised: 8/05/2008
 Map Phase: Pre-Review



Legend

- Miris Corners
- Stand Boundaries
- Proposed Special Conservation Areas
- Dedicated Special Conservation Areas
- Potential Old Growth Stands





DEDICATED CONSERVATION AREA DETAILS

* This is a list of Dedicated Biodiversity Areas for this compartment along with a 1/4 mile buffer surrounding the compartment. Refer to Dedicated Conservation Area Map for areas that the below listed Conservation Areas are located.

ERA = Ecological Reference Area
 HCVA = High Conservation Value Area
 SCA = Special Conservation Area

Conservation Area	Type	Description
SCA	Archaeological Site	An aquatic or terrestrial area of the State that contains physical remains of human occupation. These are sites of cultural and historical significance that may occur upon terrestrial areas and Great Lakes bottomlands. They include thousands of Native American settlements and burial sites, as well as French and British outposts, nineteenth century logging camps, mines and homesteads. Beneath the waters of the Great Lakes, there are shipwrecks and other remains documenting the maritime trade. Such sites may be identified by Natural heritage data from the State Historic Preservation Office. Proposed treatments in this compartment will be implemented in such a manner as to maintain the integrity of these sites. Due to the sensitive nature of this information, no further detail about location is available.
SCA	Potential Old Growth Areas	This category contains stands were identified for a broad range of reasons and were coded in the OI database as stand condition 8 as potential old growth (POG). Approximately 310,000 acres have been identified through the Operations Inventory (OI)/Compartment Review process. For stands in Year of Entry 2008 and forward, potential old growth is managed for the identified objective until it is: 1) vetted through the Biodiversity Conservation Planning Process (BCPP) and given a specific designation and objective (as an ERA, HCVA, or other type of SCA) and is released from the potential old growth designation; or 2) it is released from the potential old growth designation via the Compartment Review process.