



**FOREST MANAGEMENT UNIT  
COMPARTMENT REVIEW PRESENTATION**

**COMPARTMENT # 020 ENTRY YEAR: 2010**

**Compartment Acreage: 581 County: Menominee**

---

*Last Revision: July 24, 2008*

**Stand Examiner:** Dustin Salter, Forester-FMFMD; Bill Rollo and Craig Albright, Wildlife Division

**Legal Description:** T35N R28W Sections 2 and 3

**Management Goals:** This compartment is comprised mainly of aspen, lowland conifer/cedar, and a number of small red pine stands. All of the red pine stands are plantations. The aspen stands are spread out over 6 age classes. The goal is to harvest some of the 40+ year old aspen to help spread out the age classes of aspen in this compartment and on the unit. The majority of the aspen is between 30 to 50 years of age. Next decade we will harvest more of the 40 year old aspen to stagger the age classes. This decade we will be final harvesting 4 small aspen stands.

**Soil and Topography:** The topography within this compartment is level with a few rolling hills. In the upland portion of the stand the soils are primarily loamy sand and sandy loam. The lowland portions contain black muck over sandy loam. The primary soil series are Mancelona-Nadeau, Onaway Fine Sandy Loam, Lupton-Tawas, and Lupton-Cathro association.

**Ownership Patterns, Development, and Land Use in and Around the Compartment:** This compartment is in the middle of a block of state land that is 11 miles long and 4 to 5 miles wide. This block of state land is fragmented by numerous private residences and camps. There are a number of farms in the near vicinity with large amounts of farmland. This compartment and the surrounding private land is primarily used for recreational activities and farming.

**Unique, Natural Features:** None known

**Archeological, Historical, and Cultural Features:** None known

**Special Management Designations or Considerations:** None

**Watershed and Fisheries Considerations:**

**Wildlife Habitat Considerations:** This very small compartment features Lake Mary, Lake Ann, and Johnson Lake on the west side and aspen forest (51% of the compartment), upland brush, grass openings, and intermixed swamp conifers in the rest. This combination of cover types provides excellent conditions for early successional wildlife, including the most popular game species. Aspen will continue to be harvested and regenerated to produce a variety of age classes for wildlife habitat. Forest openings in this area (sandy outwash sites) are very good wildlife habitat because they support a growth of cherry, forbs, and bramble. This particular compartment may even have a seed source for plants that have a prairie affinity due to its nearness to the Shakey Lakes Savanna. As in past decades, these openings will be maintained and enhanced with prescribed burns—a treatment that limits encroachment by trees, reduces thatch, and stimulates the native seed bank. Forest stands between Johnson Lake and Lake Ann are designated a

“Special Conservation Area” to provide mature forest conditions (cavity trees, snags, dead woody debris) for wildlife in the riparian zone. Stand 41 (A6) has an outbreak of exotic “buckthorn” which may be treated.

**Mineral Resource and Development Concerns and/or Restrictions:**

**Vehicle Access:** The access into this compartment is limited. There are a few two-track roads that provide access into the western portion of the compartment, but the only way to access the east side by vehicle is through private property.

**Survey Needs:** Possibly four corners will need to be set.

**Recreational Facilities and Opportunities:** There are two state maintained boat access sites within this compartment. They are on Lake Ann and Lake Mary. There is also a rustic (man made) access site on to Johnson Lake. The access point on Johnson Lake is only for a small aluminum boat or canoe. A portion of the Shakey River also flows through part of this compartment, which provides another fishing opportunity. Hunting is the other primary recreational activity within this compartment.

**Fire Protection:** There are a number of small red pine plantations throughout the compartment, but there is an abundance of lowland in close proximity to these stands. The upland aspen and grass stands could have potential for wildfire in the spring, but after green-up the fire potential is minimal. There are a number of water access points throughout the compartment.

**Additional Compartment Information:** There are on-going talks with a landowner in section 3 regarding an easement into state land.

**\*\*\*\* Cover type details, proposed treatments and stands designated as FDF are listed in the attached reports:**

- Cover Type by Age Class**
- Cover Type by Management Objective**
- Compartment Volume Summary**
- Proposed Treatments – No Limiting Factors**
- Proposed Treatments – With Limiting Factors**

**\*\*\*\* The following information is displayed on the attached compartment maps:**

- Base feature information, stand numbers, cover types**
- Proposed treatments**
- Proposed road access system**
- Suggested potential old growth**



8/12/2008 10:07:57 AM

Michigan Department of Natural Resources - Operations Inventory System  
Individual Compartment Report

ESCANABA RIVER STATE FOREST

ESCANABA FOREST MGT UNIT

MENOMINEE COUNTY

COMPARTMENT: 20

Table 3A

(acres shown in boxes)

MANAGEMENT OBJECTIVE TYPE

COVER TYPE	A	S	V	C	G	H	J	I	L	P	N	Q	X	O	B	R	K	Y	F	E	T	D	U	M	Z	W	Total
A Aspen	293																										293
C Cedar				79																							79
G Grass					6																						6
L Lowlnd Brush									16																		16
Q Mx Swmp Cnfr												84															84
X Non Stocked													3														3
R Red Pine															40												40
F Spruce Fir																			13								13
T Tamarack																					2						2
U Upland Brush																								18			18
Z Water																									27		27
<b>Total</b>	293			79	6				16			84	3		40				13		2			18	27		581

ESCANABA RIVER STATE FOREST

ESCANABA FOREST MGT UNIT

MENOMINEE COUNTY

COMPARTMENT: **20**

**Table 10 - COMPARTMENT VOLUME SUMMARY - ALL STANDS**

COMPARTMENT SUMMARY			
TOTAL VOLUME		CUT VOLUME	
Hardwood	1937 Cds	Hardwood	378 Cds
Hardwood	58 Mbf	Softwood	5 Mbf
Softwood	3804 Cds	Sum CutVol	388 Cds
Softwood	52 Mbf		
Sum TotVol	5961 Cds		
<b>Total Cmpnt Acres</b>		Acres Proposed For Cut.....	21
581			

**ESCANABA FOREST MGT UNIT**

**Proposed Treatments  
With NO Limiting Factors**

**Compartment: 20**

**Entry Year: 2010**

Stand	Cover Type	Acres	Age	Site Index	Mgt Obj	Condition	Method Cut	Harvest Priority	Cultural Need	fdf Status
<b>9</b>	<b>A6</b>	12	40	50	aspen (upland)	mature	final harvest	1	natural regeneration	
<p>comnts Fmd : Not real high quality A, cut now while it will still regenerate well. The stand has a sizeable proportion of older remnant aspen mixed in. Final harvest this stand, retaining oak, pine, and cherry. By harvesting this stand it will help to spread out the aspen age classes in this comp. After the pre-review it was decided to treat as prescribed except also save all oak.</p> <p>Wld : Retain all oaks. Concur with FMFMD.</p>										
<b>42</b>	<b>U0</b>	10		50	upland brush	nonstocked		0	opening maintenance	
<p>comnts Fmd : Stand was burned last decade. Some balm is seeding in. Quite a bit of cherry brush and ferns. After the pre-review wildlife wanted to RX burn this stand.</p> <p>Wld : Cherry shrubland with grasses, bracken fern, and some sweetfern in spots. Follow the old plow lines from the previous burn when setting up this prescribe burn. 0.5 acres of this stand is included within Std 24. This should be delineated out and included with this prescribed burn. If the fire plan determines that it would be too difficult to burn this 1/2 acre, then the burn lines will be adjusted accordingly. GIS approximately 8.0 acres. Prescribe for a burn to control woody encroachment and stimulate the herbaceous layer.</p>										
<b>46</b>	<b>U0</b>	1		50	upland brush	nonstocked		0	opening maintenance	
<p>comnts Fmd : Upland brush and cherry with a minimal amount of regen filling in. Most of this stand will fill in with aspen after stand 9 is cut.</p> <p>Wld : On pre-review map, this stand was part of Std 10 (A3). GIS acreage is 2.3 acres. WLD would prefer that non-forested openings greater than 1 acre or those smaller that have special wildlife values be delineated out and not be included with adjacent stands. Do not cut within the boundaries of this U-type when harvesting Std 9.</p>										
<b>47</b>	<b>U0</b>	2		50	upland brush	nonstocked		0	opening maintenance	
<p>comnts Fmd : Upland brush and cherry with balm, balsam, and spruce regen filling in. After pre-review wildlife would like to burn this stand, if possible.</p> <p>Wld : In pre-review map, this stand was part of Std 13 (A3). This 2.4 acre U-type has an old plow line around it from 2003 and is covered by grass sod, cherry, bramble, and ferns. Prescribe for a burn to control woody encroachment and to stimulate the herbaceous layer.</p>										
<b>48</b>	<b>A5</b>	5	43	50	aspen (upland)	immature	final harvest	2	natural regeneration	
<p>comnts Fmd : Poor quality A, final harvest this stand while we are in this area harvesting stands 9, 50, and 51. Harvest this stand while we can still regenerate it. Manage for A. Leave the white pine and cherry. After the pre-review it was decided to treat as prescribed except also save all oak.</p> <p>Wld : Retain all oak. Concur with FMFMD.</p>										
<b>50</b>	<b>A5</b>	1	43	61	aspen (upland)	immature	final harvest	2	natural regeneration	
<p>comnts Fmd : Poor quality A, final harvest the stand while we are still able to regenerate the stand. Due to low volumes we can harvest now when we have other stands in the area. Manage for A. Retain all red and white pine and cherry. After the pre-review it was decided to treat as prescribed except also save all oak.</p> <p>Wld : Retain all oak. Concur with FMFMD.</p>										
<b>51</b>	<b>A6</b>	3	40	50	aspen (upland)	mature	final harvest	1	natural regeneration	
<p>comnts Fmd : Decent quality aspen, there are quite a few older remnant A mixed in. A lot of the A stems are dying back. Harvest now while it will still regenerate good. Final harvest, retaining all pine and cherry. Manage for A. After the pre-review it was decided to treat as prescribed except also save all oak.</p> <p>Wld : Retain all oak. Concur with FMFMD.</p>										
<b>411</b>	<b>G0</b>	6		50	grass	nonstocked		0	opening maintenance	
<p>comnts Fmd : Stand was burned last decade. This stand is more of an upland brush stand with cherry, hazel, and some balm sprouts. Very little grass. Let wildlife decide what they want to do with this stand. After pre-review wildlife would like to RX burn this stand, burning the portions of the stands that are practical.</p> <p>Wld : GIS approximately 6.3 acres. Knoll of grass, sweetfern, bracken fern, and cherry. Prescribe for a burn to control woody encroachment and to stimulate the herbaceous layer.</p>										
<p><b>Total Acres..... 40</b></p>										

**ESCANABA FOREST MGT UNIT**

**Proposed Treatments  
With Limiting Factors**

**Compartment: 20**

**Entry Year: 2010**

Stand	Cover Type	Acres	Age	Site Index	Mgt Obj	Condition	Method Cut	Harvest Priority	Cultural Need	FDF Status
41	A6	7	51	50	aspen (upland)	old growth (potential or actual)		0	other - specify in remarks	

TREATMENT LIMITING FACTORS: Potential or designated old growth

comnts Fmd : SCA - Lake Ann/Johnson Lake riparian zone. There is quite a bit of buckthorn in this stand. This stand is mature and ready to be harvested. Treat buckthorn as directed by Jim Ferris and Bob Heyd.

Wld : We will have to determine species of buckthorn and the possibilities of effective control if it is determined to be an exotic or invasive species of buckthorn.

---

**Total Acres..... 7**

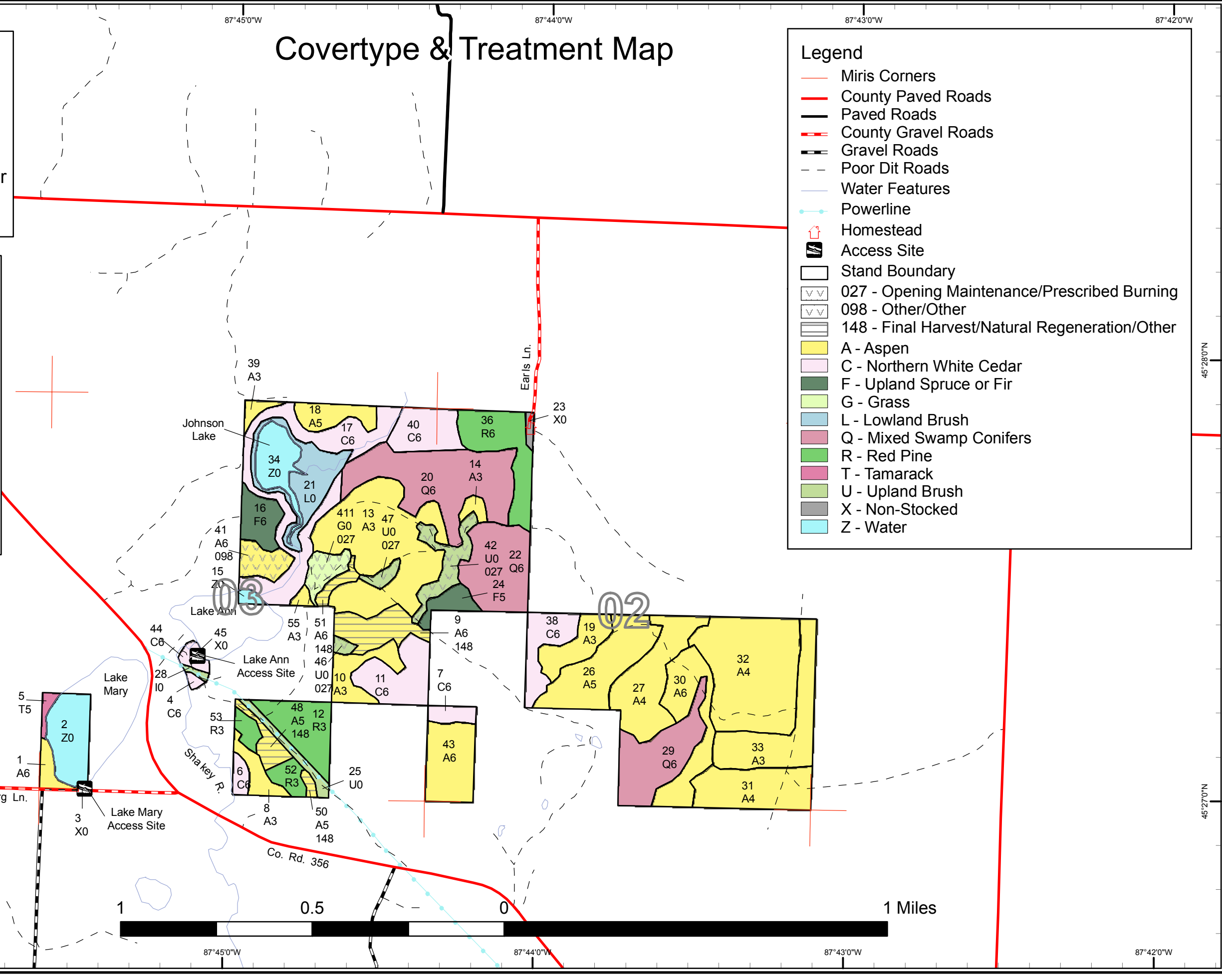
Compartment 20  
 T35N, R28W, Sec. 2, 3  
 County: Menominee  
 Unit: Escanaba  
 YOE: 2010  
 Acres: 581 GIS Calculated  
 Stand Examiner: Dustin Salter  
 Map Revised: 7/23/2008  
 Map Phase: Pre-Review

# Covertime & Treatment Map

### Legend

- Miris Corners
- County Paved Roads
- Paved Roads
- County Gravel Roads
- Gravel Roads
- Poor Dit Roads
- Water Features
- Powerline
- Homestead
- Access Site
- Stand Boundary
- 027 - Opening Maintenance/Prescribed Burning
- 098 - Other/Other
- 148 - Final Harvest/Natural Regeneration/Other
- A - Aspen
- C - Northern White Cedar
- F - Upland Spruce or Fir
- G - Grass
- L - Lowland Brush
- Q - Mixed Swamp Conifers
- R - Red Pine
- T - Tamarack
- U - Upland Brush
- X - Non-Stocked
- Z - Water

03 02



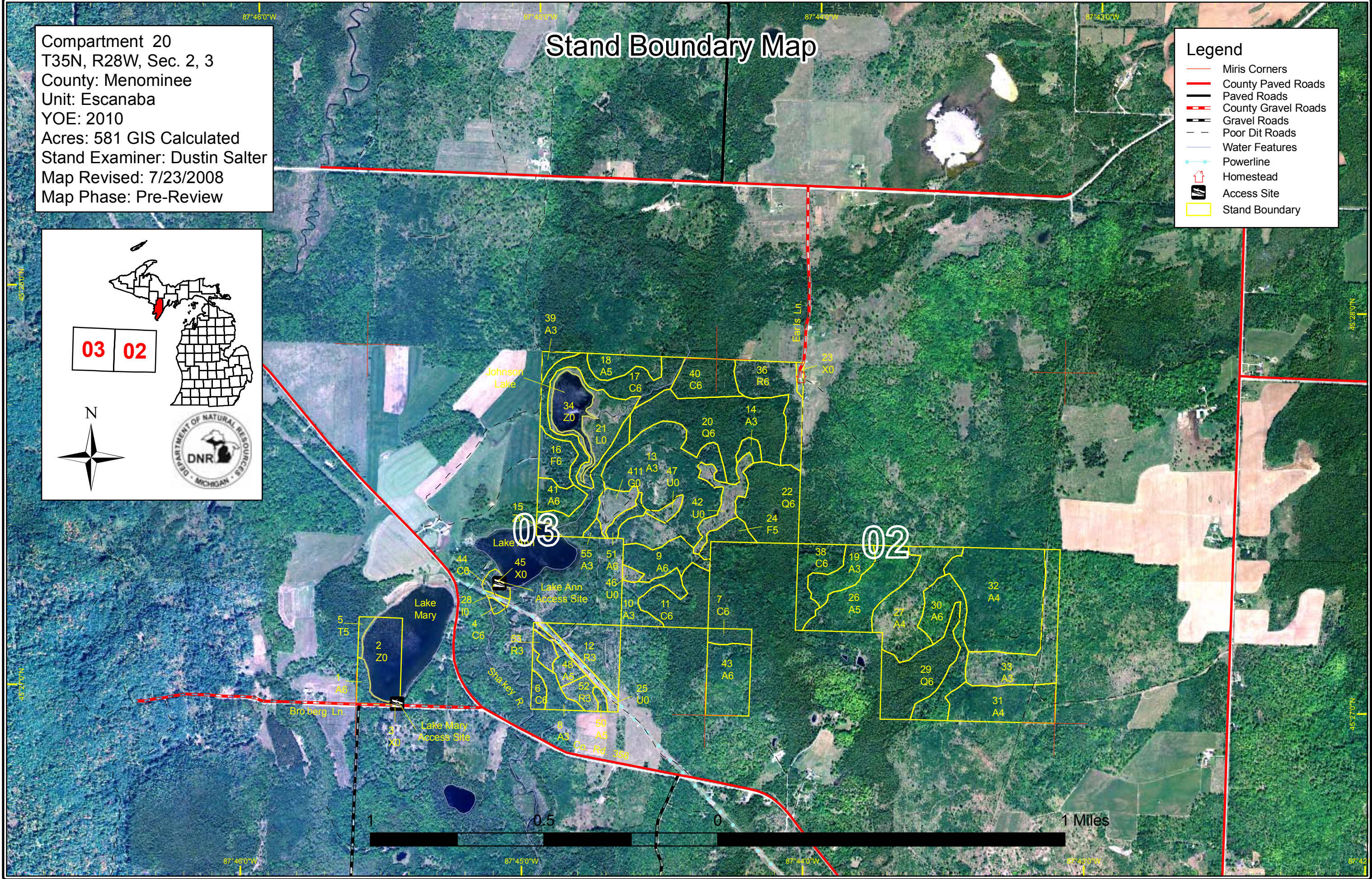
Compartment 20  
 T35N, R28W, Sec. 2, 3  
 County: Menominee  
 Unit: Escanaba  
 YOE: 2010  
 Acres: 581 GIS Calculated  
 Stand Examiner: Dustin Salter  
 Map Revised: 7/23/2008  
 Map Phase: Pre-Review

# Stand Boundary Map

- Legend**
- Miris Corners
  - County Paved Roads
  - Paved Roads
  - County Gravel Roads
  - Gravel Roads
  - Poor Dit Roads
  - Water Features
  - Powerline
  - Homestead
  - Access Site
  - Stand Boundary

03







02

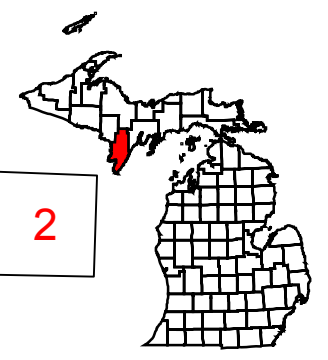


Compartment 20  
 T35N, R28W, Sec. 2, 3  
 County: Menominee  
 Unit: Escanaba  
 YOE: 2010  
 Acres: 581 GIS Calculated  
 Stand Examiner: Dustin Salter  
 Map Revised: 7/23/2008  
 Map Phase: Pre-Review



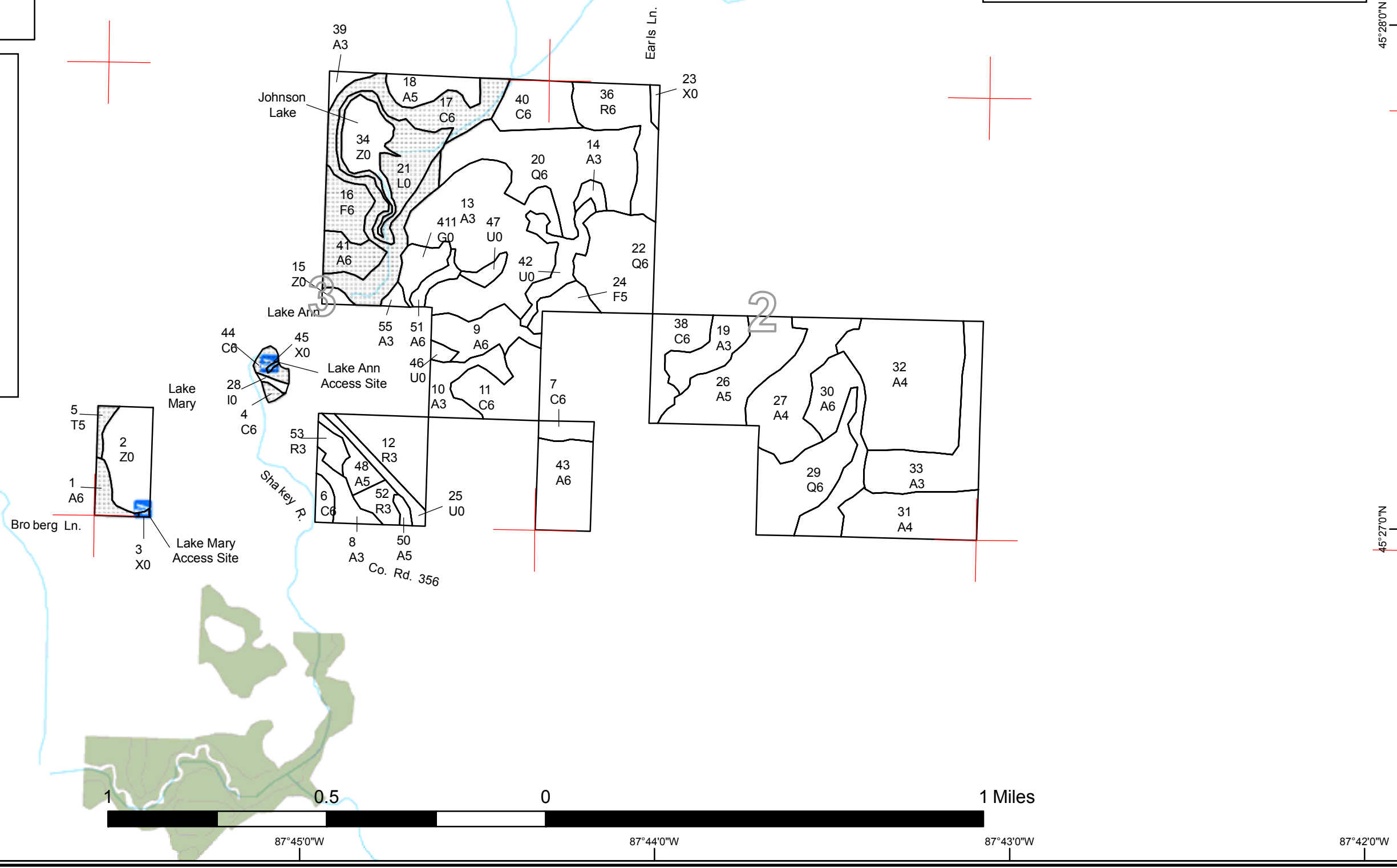
# Dedicated & Proposed Special Conservation Area Map

**Legend**

-  Miris Corners
-  Stand Boundaries
-  Proposed Special Conservation Areas
- Dedicated Special Conservation Areas**
-  Boat Access Sites
-  Cold Water Streams
-  OI Special Conservation Areas



3 2



## DEDICATED CONSERVATION AREA DETAILS

\* This is a list of Dedicated Biodiversity Areas for this compartment along with a 1/4 mile buffer surrounding the compartment. Refer to Dedicated Conservation Area Map for areas that the below listed Conservation Areas are located.

ERA = Ecological Reference Area  
HCVA = High Conservation Value Area  
SCA = Special Conservation Area

Conservation Area	Type	Description
SCA	Archaeological Site	An aquatic or terrestrial area of the State that contains physical remains of human occupation. These are sites of cultural and historical significance that may occur upon terrestrial areas and Great Lakes bottomlands. They include thousands of Native American settlements and burial sites, as well as French and British outposts, nineteenth century logging camps, mines and homesteads. Beneath the waters of the Great Lakes, there are shipwrecks and other remains documenting the maritime trade. Such sites may be identified by Natural heritage data from the State Historic Preservation Office. Proposed treatments in this compartment will be implemented in such a manner as to maintain the integrity of these sites. Due to the sensitive nature of this information, no further detail about location is available.
SCA	Cold Water Stream	A coldwater stream has temperature and dissolved oxygen conditions that allow naturally-reproduced or stocked trout populations and those of other coldwater fish species (e.g., slimy sculpin) to persist from year to year. Coldwater streams in Michigan typically provide these conditions due to substantial contributions of groundwater to their stream flows. Such streams are established by Director's action and designated as trout resources by Fisheries Order 210.
SCA	Concentrated Recreation Area	Facilities that are designed and maintained for routine or heavy recreational use, including State Parks, State Forest campgrounds, motorized and non-motorized trails, trailheads, staging areas and public access sites.
SCA	Potential Old Growth Areas	This category contains stands were identified for a broad range of reasons and were coded in the OI database as stand condition 8 as potential old growth (POG). Approximately 310,000 acres have been identified through the Operations Inventory (OI)/Compartment Review process. For stands in Year of Entry 2008 and forward, potential old growth is managed for the identified objective until it is: 1) vetted through the Biodiversity Conservation Planning Process (BCPP) and given a specific designation and objective (as an ERA, HCVA, or other type of SCA) and is released from the potential old growth designation; or 2) it is released from the potential old growth designation via the Compartment Review process.