



**ESCANABA FOREST MANAGEMENT UNIT
COMPARTMENT REVIEW PRESENTATION**

COMPARTMENT # 109 ENTRY YEAR: 2008

Compartment Acreage: 1540 County: Menominee

Last Revision: August 23, 2006

Stand Examiner: Russ MacDonald, Fire Supervisor; Eric Thompson, Unit Manager; Bill Rollo and Craig Albright, Wildlife Division

Legal Description: T35N, R29W, Sections 11, 12, 13, 14, 24, 25, and 36
T35N, R28W, Sections 19, 30, and 31

Management Goals: Restore oak pine barrens natural community and associated intermittent wetlands including trees, shrubs, and herbaceous plants and wildlife indicative of this fire dependent ecosystem. Protect and enhance rare species populations. Assess the need for access sites, parking lots and signs etc. Maintain recreational and traditional use opportunities that are compatible with oak pine barrens restoration (hunting, berry picking, photography, wildlife and scenery viewing). Procure the capacity and funding to carry out management goals and objectives. Seek legal level of protection via natural areas dedication.

Soil and Topography: Soils include well drained sandy over loamy soils and excessively drained sands. Major soil types include Grayling Sands and Pemene-Rubicon complex. Topography is nearly level to moderately steep.

Ownership Patterns, Development, and Land Use in and Around the Compartment: Ownership around this compartment is a mix of state, private, and county. Most of the private land is small parcels to 40 acre parcels with some larger land owners and clubs. Land use around this compartment is mainly forest, with a mix of private residences. The county maintains a recreation site between the two blocks of this compartment. There is mineral exploration in progress just to the east of the northern block of this compartment.

Unique, Natural Features: This compartment is an Ecological Reference Area.

Archeological, Historical, and Cultural Features: None known.

Special Management Designations or Considerations: This area is administratively recognized as a natural area.

Watershed and Fisheries Considerations: None

Wildlife Habitat Considerations: *Ecological Context:* This compartment is in a landscape of sandy outwash plains. Historically, the plains supported jack pine and pin oak barrens, and knobs and thin soil areas supported red pine, white pine, jack pine, aspen, and red oak. Knobs covered with sandy till grew northern hardwoods and white pine. Fires were a common natural disturbance regime. Aspen presently dominates many of the sites that were formerly red and white pine.

Recommendations: Timber harvesting will be used to reduce tree density and prepare sites for prescribed fire. The reintroduction of fire will reduce tree canopy closure to less than 50% and stimulate native grasses and forbs that are present in the seed bank. Mechanical treatments (hydro-mowing or roller chopping) may also be used to reduce shrub and sapling dominance in open areas. Over time, this compartment will provide habitat for wildlife species adapted to savanna conditions. These species include a large variety of species such as bluebirds, kestrels, sandhill cranes, deer, and wild turkeys.

Mineral Resource and Development Concerns and/or Restrictions: Surface sediments of the north area consist of glacial outwash sand & gravel and postglacial alluvium. The south area's sediments consist of an end moraine of coarse-textured till. The glacial drift thickness varies between 10 and 50 feet. Beneath the glacial drift is the Cambrian Munising Formation. The Munising may have been used as a building stone in the past and it overlaps Precambrian aged rocks, which may have metallic and nonmetallic mineral potential. State lands to the northeast have been leased for metallic mineral exploration. Gravel pits are located in the has some potential, while the southern area has good potential. No economic oil and gas production has been found in the UP.

Vehicle Access: Most of the compartment can be access by conventional two-wheel drive vehicles.

Survey Needs:

Recreational Facilities and Opportunities: No developed recreational opportunities on state land in this area. There is a county campground between the two blocks of this compartment. Opportunities for hunting, hiking, wildlife viewing currently exist.

Fire Protection: This area is prone to fire due to the droughty soils and timber types. Access for fire protection is very good. There is an abundant source of water at Shakey Lakes.

Additional Compartment Information:

****** Cover type details, proposed treatments and stands designated as FDF are listed in the attached reports:**

- Cover Type by Age Class**
- Cover Type by Management Objective**
- Compartment Volume Summary**
- Proposed Treatments – No Limiting Factors**
- Proposed Treatments – With Limiting Factors**

****** The following information is displayed on the attached compartment maps:**

- Base feature information, stand numbers, cover types**
- Proposed treatments**
- Proposed road access system**
- Suggested potential old growth**

08/30/2006 1:33:11 PM

Michigan Department of Natural Resources - Operations Inventory System
Individual Compartment Report

ESCANABA RIVER STATE FOREST

ESCANABA FOREST MGT UNIT

MENOMINEE COUNTY

COMPARTMENT: 109

Table 3A

(acres shown in boxes)

MANAGEMENT OBJECTIVE TYPE

COVER TYPE	A	S	V	C	G	H	J	I	L	P	N	Q	X	O	B	R	K	Y	F	E	T	D	U	M	Z	W	Total
A Aspen	305				260																						565
S Black Spruce		3																									3
V Bog or Marsh			7																								7
G Grass					58																						58
J Jack Pine					3		45							4													52
L Lowlnd Brush									10																		10
N Marsh											27																27
Q Mx Swmp Cnfr												6															6
X Non Stocked													20														20
O Oak					9		3							627													639
U Upland Brush					117																			5			122
M Upland Hdwds																								6			6
Z Water																									18		18
W White Pine																										7	7
Total	305	3	7		447		48		10		27	6	20	631									5	6	18	7	1540

ESCANABA RIVER STATE FOREST

ESCANABA FOREST MGT UNIT

MENOMINEE COUNTY

COMPARTMENT: 109

Table 10 - COMPARTMENT VOLUME SUMMARY - ALL STANDS

COMPARTMENT SUMMARY			
TOTAL VOLUME		CUT VOLUME	
Hardwood	12921 Cds	Hardwood	3830 Cds
Hardwood	732 Mbf	Hardwood	49 Mbf
Softwood	1344 Cds	Softwood	793 Cds
Softwood	120 Mbf	Sum CutVol	4721 Cds
Sum TotVol	15969 Cds		
Total Cmpt Acres		Acres Proposed For Cut.....	384
1540			

ESCANABA FOREST MGT UNIT

**Proposed Treatments
With NO Limiting Factors**

Compartment: 109 Entry Year: 2008

Stand	Cover Type	Acres	Age	Site Index	Mgt Obj	Condition	Method Cut	Harvest Priority	Cultural Need	FDF Status
6	A6	2	74	55	aspen (upland)	old growth (potential or actual)	final harvest	3		
comnts Fmd : BUFFER ZONE - NOT IN A BURN UNIT Ground cover is shrubs 4 to 6 feet. A couple of larger white pine, very small stand, could be cut. Aspen is the preferred species to regenerate, however since this is in the Oak savanna compartment grass opening would also be acceptable. (See compartment header for additional information regarding ERA management objectives and treatments)										
8	U2	18		55	grass	old growth (potential or actual)		0	other - specify in remarks	
comnts Fmd : BURN UNIT 60 This area was burned in May of 1994. Aspen patches are 1 to 2 inch diameter and about 20 feet tall. Should be burned again soon in order to set back aspen and brush competition. Management objective is Oak pine barrens conditions. May take several successive burns to achieve oak pine barrens conditions. ((See compartment header for additional information regarding ERA management objectives and treatments)										
14	U3	11		50	grass	old growth (potential or actual)		0	other - specify in remarks	
comnts Fmd : This is upland brush with scattered trees. About three dead pine 50' tall. Mostly cherry, a few oak sapplings. Fire control lines between stands 14 & 36 is barely visible now. This stand was burned in 1994. Pockets of oak. (See compartment header for additional information regarding ERA management objectives and treatments) BURN UNIT 67										
15	U2	23		50	grass	old growth (potential or actual)		0	other - specify in remarks	
comnts Fmd : This stand was clearcut under contract #27-88-1. Clumps of Jack Pine and some Oak and Red Pine left. A portion was burned summer of 1993. This stand was burned again May of 1994 Site Index for Jack Pine is 55 and Red Pine is 65. (See compartment header for additional information regarding ERA management objectives and treatments) BURN UNIT 61										
16	A3	29	12	50	grass	old growth (potential or actual)		0	other - specify in remarks	
comnts Fmd : Young Aspen 1-2 inches diameter and 10 to 20 feet tall. Scattered cherry. Some Residual oak. This stand was burned summer of 1993. This stand was burned again May of 1994. (See compartment header for additional information regarding ERA management objectives and treatments) BURN UNIT 61										
17	A3	14	12	55	grass	old growth (potential or actual)		0	other - specify in remarks	
comnts Fmd : Young Aspen 1 to 2 inches diameter and 10 to 20 feet tall. Scattered cherry. Some residual oak. This stand was burned summer of 1993 and again May of 1994. Small stand of O8 in Southeast corner (added from stand 31). (See compartment header for additional information regarding ERA management objectives and treatments) BURN UNIT 67										
19	U2	26		50	grass	old growth (potential or actual)		0	other - specify in remarks	
comnts Fmd : This stand was burned summer of 1993 and again May of 1994. Scattered aspen throughout the stand. Small pocket of O8 in the Northwest corner (added from stand 30) (See compartment header for additional information regarding ERA management objectives and treatments) BURN UNIT 62										
22	A5	2	59	50	grass	old growth (potential or actual)	final harvest	1	other - specify in remarks	
comnts Fmd : Cherry, sweet fern, grass. Oak does not look to be in the best shape. Scattered Oak and Jack Pine. Harverst and burn. (See compartment header for additional information regarding ERA management objectives and treatments) BURN UNIT 62										
28	A5	2	59	50	grass	old growth (potential or actual)	final harvest	2	other - specify in remarks	
comnts Fmd : A5 - Hazel, sweet fern, blueberry (Scattered Red Pine) Saw some oak seedlings. Some open areas. Some young aspen 6 to 10 feet tall on edge. (See compartment header for additional information regarding ERA management objectives and treatments) BURN UNIT 62										
29	L0	4		35	lowland brush	old growth (potential or actual)		0	other - specify in remarks	
comnts Fmd : This stand was dry in 2006 the day that I walked through it. Depression area (lowland brush) Burn with adjacent stands. This stand was burned summer of 1993 and again in May of 1994. (See compartment header for additional information regarding ERA management objectives and treatments) BURN UNIT 62										

ESCANABA FOREST MGT UNIT

**Proposed Treatments
With NO Limiting Factors**

Compartment: 109 Entry Year: 2008

Stand	Cover Type	Acres	Age	Site Index	Mgt Obj	Condition	Method Cut	Harvest Priority	Cultural Need	FDF Status
36	U3	7	12	50	grass	old growth (potential or actual)		0	other - specify in remarks	
comnts Fmd : Lots more cherry in this stand then in stand 14, some scattered oak. (See compartment header for additional information regarding ERA management objectives and treatments) BURN UNIT 68										
39	J6	20	59	45	jack pine	old growth (potential or actual)	final harvest	1	other - specify in remarks	
comnts Fmd : This stand contains a pocket of oak. Oak wilt is present, oak should be harvested to the extent necessary to help control the spread of oak wilt. Scattered oak and patches of aspen. Jack Pine is starting to break up and should be harvested soon. This stand is not part of a burn unit. (See compartment header for additional information regarding ERA management objectives and treatments)										
40	U1	9	12	50	grass	old growth (potential or actual)		0	other - specify in remarks	
comnts Fmd : This stand did not come back to Aspen. Cherry/bracken Some scattered oak seedlings. (See compartment header for additional information regarding ERA management objectives and treatments) BURN UNIT 69										
41	O6	6	89	52	oak	old growth (potential or actual)	selection	1	other - specify in remarks	
comnts Fmd : Oak wilt present, treat as necessary to control oak wilt. (See compartment header for additional information regarding ERA management objectives and treatments) (1994 comments - Aspen, White Birch, and Jack Pine were cut under contract #18-82A) BURN UNIT 69										
43	A2	4	12	50	grass	old growth (potential or actual)		0	other - specify in remarks	
comnts Fmd : (See compartment header for additional information regarding ERA management objectives and treatments) BURN UNIT 68										
45	A3	20	12	50	grass	old growth (potential or actual)		0	other - specify in remarks	
comnts Fmd : More open with pockets of young aspen (A3) 1 to 2 inches diameter and 15 to 20 feet tall. Mostly looks like and A3 with pockets of U. This stand was burned summer of 1993 and again May of 1994. (See compartment header for additional information regarding ERA management objectives and treatments) BURN UNIT 62										
48	U2	6		50	grass	old growth (potential or actual)		0	other - specify in remarks	
comnts Fmd : Starting to fill in with Aspen. (See compartment header for additional information regarding ERA management objectives and treatments) BURN UNIT 64										
49	A3	20	12	70	grass	old growth (potential or actual)		0	other - specify in remarks	
comnts Fmd : North end of stand (was stand 35) is mostly a two storied A3-4 stand with scattered oak. Scattered oak seedlings. (See compartment header for additional information regarding ERA management objectives and treatments) BURN UNIT 64										
52	O9	31	89	52	oak	old growth (potential or actual)	selection	1		
comnts Fmd : Oak wilt present (epicenter in middle of stand) oak seedlings through out stand. Bracken fern, cherry, grass in the understory. Oak is not in good shape. Treat as necessary to control oak wilt. (See compartment header for additional information regarding ERA management objectives and treatments) BURN UNIT 65										
53	A2	4	12	50	grass	old growth (potential or actual)		0	other - specify in remarks	
comnts Fmd : (See compartment header for additional information regarding ERA management objectives and treatments) BURN UNIT 65										
54	O6	3	89	52	oak	old growth (potential or actual)	selection	1	other - specify in remarks	
comnts Fmd : Oak wilt present, treat as necessary to control oak wilt. (See compartment header for additional information regarding ERA management objectives and treatments) (1994 comments - Aspen, White Birch, and Jack Pine were cut under contract #18-82A) BURN UNIT 69										

ESCANABA FOREST MGT UNIT

**Proposed Treatments
With NO Limiting Factors**

Compartment: 109 Entry Year: 2008

Stand	Cover Type	Acres	Age	Site Index	Mgt Obj	Condition	Method Cut	Harvest Priority	Cultural Need	FDF Status
55	O6	4	70	50	oak	old growth (potential or actual)	selection	1		
comnts Fmd : Too close to private and travel influence zone to burn. (See compartment header for additional information regarding ERA management objectives and treatments) BURN UNIT 4										
56	O6	19	71	60	oak	old growth (potential or actual)	final harvest	1	other - specify in remarks	
comnts Fmd : Oak wilt present, treat as necessary to control oak wilt. (See compartment header for additional information regarding ERA management objectives and treatments) BURN UNIT 2										
57	A9	5	72	80	aspen (upland)	old growth (potential or actual)	final harvest	1		
comnts Fmd : East side - pine understory. High priority - Aspen in decline. (See compartment header for additional information regarding ERA management objectives and treatments) BURN UNIT 2										
58	O6	31	71	60	oak	old growth (potential or actual)	selection	1	other - specify in remarks	
comnts Fmd : (See compartment header for additional information regarding ERA management objectives and treatments) . BURN UNIT 1										
59	J6	5	70	50	jack pine	old growth (potential or actual)	final harvest	1	planting	
comnts Fmd : Travel zone for Shakey Lakes Park. Clearcut jack pine, leave oak(unless treatment to control oak wilt is necessary), red pine, and white pine if present. This stand would probably be difficult to burn. Plant to Jack Pine. (See compartment header for additional information regarding ERA management objectives and treatments) BURN UNIT 3										
60	O5	3	89	50	jack pine	old growth (potential or actual)	improvement	1	planting	
comnts Fmd : Most of the oak is infected with oak wilt. Harvest as necessary to control the oak. Plant Jack Pine. (See compartment header for additional information regarding ERA management objectives and treatments) BURN UNIT 3										
62	U3	1		60	grass	old growth (potential or actual)		0	other - specify in remarks	
comnts Fmd : Most of the oak has been salvaged due to oak wilt (mostly illegal firewood cutting). Sweet fern. Scattered large Jack Pine. (See compartment header for additional information regarding ERA management objectives and treatments) BURN UNIT 2										
64	J6	4	59	50	oak	old growth (potential or actual)	final harvest	1	other - specify in remarks	
comnts Fmd : Jack Pine is over mature and 50% dead. Oak filling in holes. (See compartment header for additional information regarding ERA management objectives and treatments) BURN UNIT 1										
65	O4	12	71	50	oak	old growth (potential or actual)		0	other - specify in remarks	
comnts Fmd : West side - converting to Aspen. Openings are hazel and aspen. Some dead oak present. This stand was cut under contract #44-90-01. Stand is naturally converting to Aspen. (See compartment header for additional information regarding ERA management objectives and treatments) BURN UNIT 5										
69	A1	12	13	71	grass	old growth (potential or actual)		0	other - specify in remarks	
comnts Fmd : Scattered Jack Pine regeneration. (See compartment header for additional information regarding ERA management objectives and treatments) BURN UNIT 9										
85	O1	1	22	61	oak	old growth (potential or actual)		0	other - specify in remarks	
comnts Fmd : Scattered oak regeneration. Stump sprouts and seed seedlings Sweetfern and hazel. Some red pine seedlings. (See compartment header for additional information regarding ERA management objectives and treatments) BURN UNIT 8										

ESCANABA FOREST MGT UNIT

**Proposed Treatments
With NO Limiting Factors**

Compartment: 109 Entry Year: 2008

Stand	Cover Type	Acres	Age	Site Index	Mgt Obj	Condition	Method Cut	Harvest Priority	Cultural Need	FDF Status
86	O4	8	13	71	oak	old growth (potential or actual)		0	other - specify in remarks	
comnts Fmd : Converting to upland brush. Few scattered oak - clumps of Jack Pine. Understory hazel. (See compartment header for additional information regarding ERA management objectives and treatments) BURN UNIT 9										
95	N0	2			marsh	old growth (potential or actual)		0	other - specify in remarks	
comnts Fmd : Lower grass opening dry at present. Burn for Oak/Pine Barrens conditions. Leather Leaf on edges. BURN UNIT 19										
97	A5	29	67	60	grass	old growth (potential or actual)	final harvest	1		
comnts Fmd : Two aged stand - over mature aspen - holes regenerating to aspen. (See compartment header for additional information regarding ERA management objectives and treatments) This stand will not be burned following harvest. Aspen will be allowed to regenerate. BURN UNIT 19.										
98	O6	26	86	45	oak	old growth (potential or actual)	selection	1	other - specify in remarks	
comnts Fmd : Most of the oak is dead and down. Stand is converting to aspen on the east side. (See compartment header for additional information regarding ERA management objectives and treatments) BURN UNIT 22										
99	Z0	18			water	old growth (potential or actual)		0	other - specify in remarks	
comnts Fmd : MUSKRAT LAKE Curent water levels are down. Burn with adjacent stand. Water levels have been down the last few years. (See compartment header for additional information regarding ERA management objectives and treatments) BURN UNIT 22										
100	N0	10			marsh	old growth (potential or actual)		0	other - specify in remarks	
comnts Fmd : Marsh around Muskrat Lake. (See compartment header for additional information regarding ERA management objectives and treatments) BURN UNIT 22										
101	O6	14	86	45	oak	old growth (potential or actual)	selection	3	other - specify in remarks	
comnts Fmd : Burn for Oak/Pine Barrens conditions. Some oak has been salvaged. BURN UNIT 22. 1.5 acres of this stand was treated for oak wilt in the winter of 2004. This site was trenched, and all species were removed. (See compartment header for additional information regarding ERA management objectives and treatments)										
110	A6	2	66	65	grass	old growth (potential or actual)	final harvest	1	other - specify in remarks	
comnts Fmd : HARVEST AND BURN (See compartment header for additional information regarding ERA management objectives and treatments) Burn Unit 43										
111	A6	7	66	65	grass	old growth (potential or actual)	final harvest	1	other - specify in remarks	
comnts Fmd : HARVEST AND BURN Mature aspen. Starting to decline. (See compartment header for additional information regarding ERA management objectives and treatments) BURN UNIT 44										
118	O5	4	86	60	oak	old growth (potential or actual)	selection	1	other - specify in remarks	
comnts Fmd : South end of stand 90% of oak is dead. Mix of red maple, oak, and aspen on the north end. Most of large oak is dead and down. (See compartment header for additional information regarding ERA management objectives and treatments) BURN UNIT 44										
119	N0	2			marsh	old growth (potential or actual)		0	other - specify in remarks	
comnts Fmd : Lowland, leather leaf bog and willow. Some marsh type grass. Burn with adjacent stands if it will burn. (See compartment header for additional information regarding ERA management objectives and treatments) BURN UNIT 44										

ESCANABA FOREST MGT UNIT

**Proposed Treatments
With NO Limiting Factors**

Compartment: 109 Entry Year: 2008

Stand	Cover Type	Acres	Age	Site Index	Mgt Obj	Condition	Method Cut	Harvest Priority	Cultural Need	FDF Status
120	O6	4	86	60	oak	old growth (potential or actual)	selection	1	other - specify in remarks	
comnts Fmd : Larger oak is dead and down. Hazel and aspen filling in openings. Not much to cut. (See compartment header for additional information regarding ERA management objectives and treatments) BURN UNIT 44										
123	O6	14	86	60	oak	old growth (potential or actual)	selection	1	other - specify in remarks	
comnts Fmd : Higher elevations oak is dead and gone. Medium quality oak on lower elevation. Mature aspen and red maple. (See compartment header for additional information regarding ERA management objectives and treatments) BURN UNIT 43										
130	A3	14	17	60	grass	old growth (potential or actual)		0	other - specify in remarks	
comnts Fmd : Scattered pole size Red Pine. Opening with scattered Oak regeneration. Burned in 1991. Clearcut except for pine under contract #24-86 Oak was left in a 5.5 acre patch along the east edge. (See compartment header for additional information regarding ERA management objectives and treatments) BURN UNIT 41 - AREA WAS BURNED IN 1991										
136	N0	2			marsh	old growth (potential or actual)		0	other - specify in remarks	
comnts Fmd : Lowland marsh type grass. (See compartment header for additional information regarding ERA management objectives and treatments) BURN UNIT 39										
137	O5	4	47	60	oak	old growth (potential or actual)		0	other - specify in remarks	
comnts Fmd : Opening filling in with hazel. Pockets of dead and down. (See compartment header for additional information regarding ERA management objectives and treatments) BURN UNIT 39 - AREA WAS BURNED IN 1991 AND 1993										
138	A3	18	13	60	grass	old growth (potential or actual)		0	other - specify in remarks	
comnts Fmd : Good stocking of aspen. (See compartment header for additional information regarding ERA management objectives and treatments) BURN UNIT 39 - AREA WAS BURNED IN 1991 AND 1993										
142	A5	6	58	70	grass	old growth (potential or actual)	final harvest	1	other - specify in remarks	
comnts Fmd : Medium quality aspen. Appears to be an oak salvage on the north end. (See compartment header for additional information regarding ERA management objectives and treatments) BURN UNIT 30										
143	A6	14	58	75	grass	old growth (potential or actual)	final harvest	1	other - specify in remarks	
comnts Fmd : Mature aspen in decline scattered red and white pine saw timber. (See compartment header for additional information regarding ERA management objectives and treatments) BURN UNIT 30										
144	A6	10	58	75	grass	old growth (potential or actual)	final harvest	1	other - specify in remarks	
comnts Fmd : HARVEST AND BURN (See compartment header for additional information regarding ERA management objectives and treatments) BURN UNIT 29										
147	O6	14	86	45	oak	old growth (potential or actual)	selection	1	other - specify in remarks	
comnts Fmd : Pockets of dead and down oak - hazel on edges. Low quality Pin Oak. Aspen on South edge (Firewood cutting patch on South end clearcut. (See compartment header for additional information regarding ERA management objectives and treatments) BURN UNIT 25										
148	O6	24	86	45	oak	old growth (potential or actual)	selection	1	other - specify in remarks	
comnts Fmd : Mature aspne along the east side, should be removed. Pockets of dead oak. Remove aspen, red maple, then burn. (See compartment header for additional information regarding ERA management objectives and treatments) BURN UNIT 24										

ESCANABA FOREST MGT UNIT

**Proposed Treatments
With NO Limiting Factors**

Compartment: 109 Entry Year: 2008

Stand	Cover Type	Acres	Age	Site Index	Mgt Obj	Condition	Method Cut	Harvest Priority	Cultural Need	FDF Status
149	A6	3	52	60	grass	old growth (potential or actual)	final harvest	1	other - specify in remarks	
comnts Fmd : Jack pine is mature and declining. Some dead and down. Aspen is declining some dead tops. (See compartment header for additional information regarding ERA management objectives and treatments) BURN UNIT 24										
150	A6	3	64	50	grass	old growth (potential or actual)	final harvest	1	other - specify in remarks	
comnts Fmd : Aspen with oak understory. (See compartment header for additional information regarding ERA management objectives and treatments) BURN UNIT 25										
151	A2	8	7	50	grass	old growth (potential or actual)		0	other - specify in remarks	
comnts Fmd : Converting to aspen oak type. Understory Hazel. (See compartment header for additional information regarding ERA management objectives and treatments) BURN UNIT 25										
152	A6	8	64	50	grass	old growth (potential or actual)	final harvest	1	other - specify in remarks	
comnts Fmd : Overmature aspen. (See compartment header for additional information regarding ERA management objectives and treatments) BURN UNIT 25										
153	O5	9	58	70	grass	old growth (potential or actual)	final harvest	1	other - specify in remarks	
comnts Fmd : Mostly aspen and scattered oak. Looks the same as stand 146. (See compartment header for additional information regarding ERA management objectives and treatments) BURN UNIT 26										
154	J6	3	73	48	grass	old growth (potential or actual)	final harvest	1	other - specify in remarks	
comnts Fmd : Jack pine with scattered red pine pole size timber. Leave oak and red pine. Leave a couple of Jack Pine clumps. (See compartment header for additional information regarding ERA management objectives and treatments) BURN UNIT 26										
156	A6	21	64	50	grass	old growth (potential or actual)	final harvest	1	other - specify in remarks	
comnts Fmd : Nice red pine sawtimber (west side). Mature aspen. (See compartment header for additional information regarding ERA management objectives and treatments) BURN UNIT 26										
404	G0	26		55	grass	old growth (potential or actual)		0	other - specify in remarks	
comnts Fmd : Scattered oak and jack pine regeneration. Ground cover is mix of grass and brush. (See compartment header for additional information regarding ERA management objectives and treatments) BURN UNIT 10										
406	A3	10	14	60	grass	old growth (potential or actual)		0	other - specify in remarks	
comnts Fmd : Good reproduction of aspen. Patches of oak and jack pine reproduction. This stand has been burned in the past. (See compartment header for additional information regarding ERA management objectives and treatments) BURN UNIT 33										
407	U2	16		60	grass	old growth (potential or actual)		0	other - specify in remarks	
comnts Fmd : Stand converting to an upland brush. Pocket of heavy hazel. Scattered oak and aspen sapplings. This stand was burned in 1992. Should be burned soon. (See compartment header for additional information regarding ERA management objectives and treatments) BURN UNIT 36										
408	G0	11		60	grass	old growth (potential or actual)		0	other - specify in remarks	
comnts Fmd : Aspen regenerations on the edges of stand. Scattered oak and jack pine sapplings. (See compartment header for additional information regarding ERA management objectives and treatments) BURN UNIT 35										

ESCANABA FOREST MGT UNIT

**Proposed Treatments
With NO Limiting Factors**

Compartment: 109 **Entry Year: 2008**

Stand	Cover Type	Acres	Age	Site Index	Mgt Obj	Condition	Method Cut	Harvest Priority	Cultural Need	FDF Status	
410	G0	11		60	grass	old growth (potential or actual)		0	other - specify in remarks		
comnts Fmd : Dead oak was salvaged. This stand has been burned in the past. (See compartment header for additional information regarding ERA management objectives and treatments)											
411	G0	1		60	grass	old growth (potential or actual)		0	other - specify in remarks		
comnts Fmd : Grass opening, buffer between state and private. Old out house on state land. Need to remove bldg. (See compartment header for additional information regarding ERA management objectives and treatments)											
Total Acres.....		734									

ESCANABA FOREST MGT UNIT

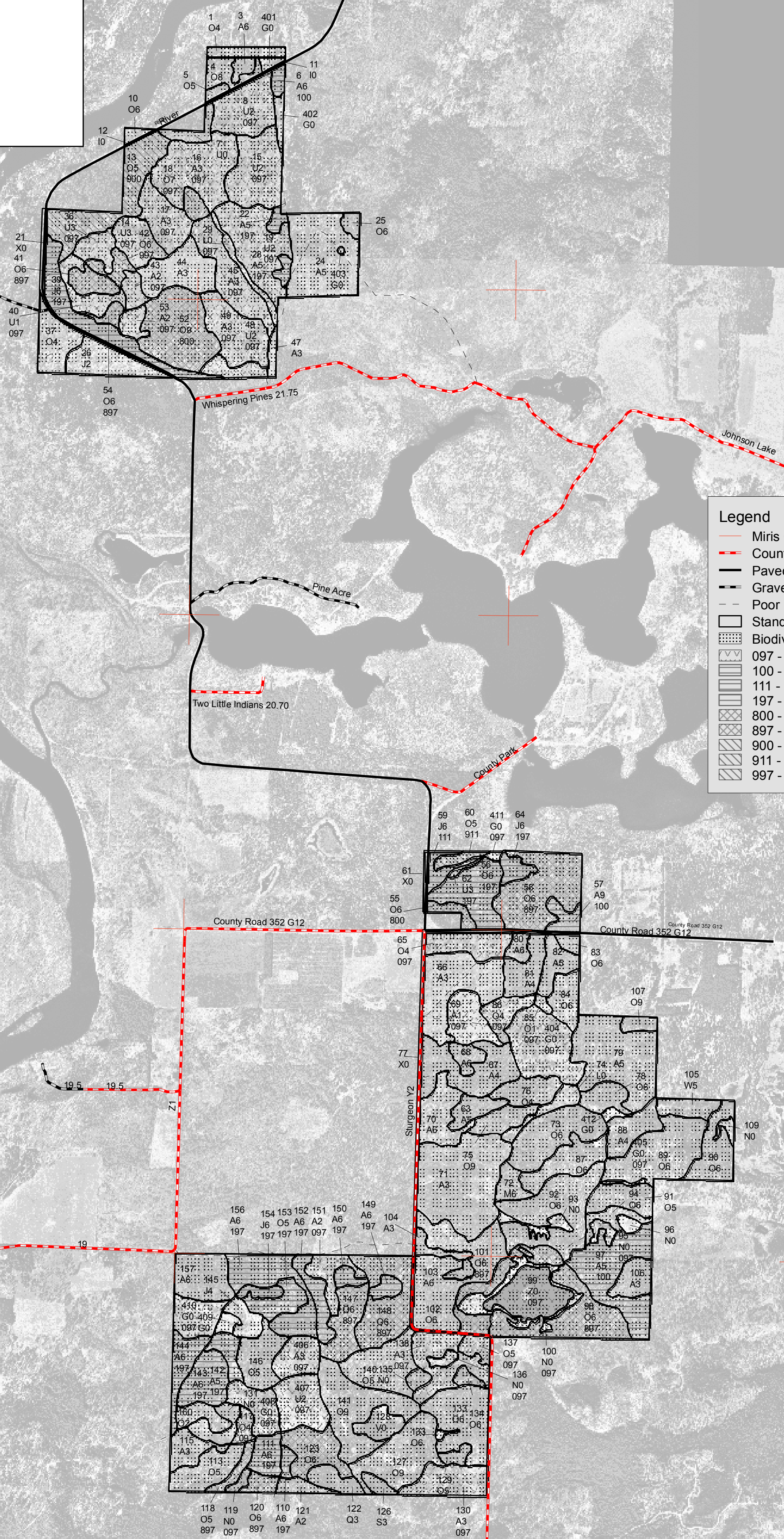
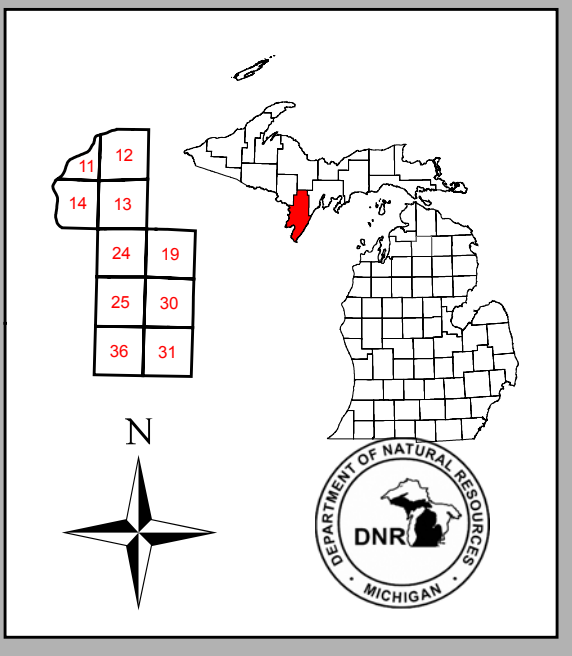
**Proposed Treatments
With Limiting Factors**

Compartment: 109 Entry Year: 2008

Stand	Cover Type	Acres	Age	Site Index	Mgt Obj	Condition	Method Cut	Harvest Priority	Cultural Need	FDF Status	
13	O5	27	89	52	oak	old growth (potential or actual)	improvement	3			
TREATMENT LIMITING FACTORS: Other Dept./Div. procedures or practices (describe in comment)											
comnts Fmd : Small patch of W3-4 near corner. Stand is more open on the north end. (NW Corner) more white birch mixed in towards the north. Lots of oak has died and fallen over along east-west line. Lots of white birch on private north of line. Treat for oak wilt as needed throughou this 10 year period. ((See compartment header for additional information regarding ERA management objectives and treatments) BURN UNIT 52											
18	O7	4	89	52	oak	old growth (potential or actual)		0	other - specify in remarks		
TREATMENT LIMITING FACTORS: Other Dept./Div. procedures or practices (describe in comment)											
comnts Fmd : Some oak stump sprouts. Lots of oak seedlings. Large diameter Oak open grown. Scattered cherry, hazel understory. This stand was burned May of 1994. Burn to restore Oak/Pine Barrens. (See compartment header for additional information regarding ERA management objectives and treatments) BURN UNIT 61											
42	O6	5	89	52	oak	old growth (potential or actual)	improvement	1	other - specify in remarks		
TREATMENT LIMITING FACTORS: Other Dept./Div. procedures or practices (describe in comment)											
comnts Fmd : Oak wilt present, treat as necessary to control oak wilt. No harvest needed unless it is to control oak wilt. (See compartment header for additional information regarding ERA management objectives and treatments) BURN UNIT 68											
117	O4	4	86	60	oak	old growth (potential or actual)		0	other - specify in remarks		
TREATMENT LIMITING FACTORS: Other Dept./Div. procedures or practices (describe in comment)											
comnts Fmd : Most of the oak is dead and down. Illegal firewood cutters cleaning up the dead oak. Stand is converting to Aspen. (See compartment header for additional information regarding ERA management objectives and treatments) BURN UNIT 34											
134	O6	2	89	60	oak	old growth (potential or actual)		0	other - specify in remarks		
TREATMENT LIMITING FACTORS: Other Dept./Div. procedures or practices (describe in comment)											
comnts Fmd : Poor quality oak, mature aspen in decline. Openings converting to upland brush. (See compartment header for additional information regarding ERA management objectives and treatments) BURN UNIT 39 - AREA WAS BURNED IN 1991 AND 1993											
Total Acres.....		42									

Compartment 109
 T35N, R29W, Sec. 11, 12, 13, 14, 24, 25, 36
 T35N, R28W, Sec. 19, 30, 31
 County: Menominee
 Unit: Escanaba
 YOE: 2008
 Acres: 1,540 GIS Calculated
 Stand Examiner: Eric Thompson
 Map Revised: 8/22/2006
 Map Phase: Pre-review

Field Map



Legend

- Miris Corners
- County Gravel Roads
- Paved Roads
- Gravel Roads
- Poor Dirt Roads
- Stand Boundary
- Biodiversity/Old growth area
- 097 - Other/Prescribed burning
- 100 - Final harvest
- 111 - Final harvest/Planting/Hand tools
- 197 - Final harvest/Other/Prescribed burning
- 800 - Selection
- 897 - Selection/Other/Prescribed burning
- 900 - Improvement
- 911 - Improvement/Planting/Hand tools
- 997 - Improvement/Other/Prescribed burning

