



**CRYSTAL FALLS FOREST MANAGEMENT UNIT  
COMPARTMENT REVIEW PRESENTATION**

**COMPARTMENT #160 - ENTRY YEAR: 2010  
Compartment Acreage: 891 - County: Iron**

---

**Revision Date:** July 2, 2008

**Stand Examiner:** Scott Sebero

**Legal Description:** T42N, R32W, Sections 21 and 22

**Management Goals:** Develop age class distribution in aspen type. Maintain health of conifer types and increase acreage where possible. Maintain and improve oak type. Develop buffers on streams. Maintain and improve road system.

**Soil and Topography:** Flat to rolling with some lowland swamps and drainages.

**Ownership Patterns, Development, and Land Use in and Around the Compartment:** State lands with a few private parcels. Lands used mainly for hunting other recreation.

**Unique, Natural Features:** Finn Lake and Stager Creek.

**Archeological, Historical, and Cultural:** None known.

**Special Management Designations or Considerations:** None known.

**Watershed and Fisheries Considerations:**

**Wildlife Habitat Considerations:** Wood turtle to the northeast; frigga and freija fritillary to the northeast. Eagle to northeast, south and southwest. Osprey to southwest, west and northwest. Loon to northeast. Historical record of purple clematis in the vicinity of the compartment. Potential for frigga fritillary, freija fritillary and red-disked alpine in bogs. Potential for goshawk, red-shouldered hawk, moose and gray wolf.

**Mineral, Oil and Gas Considerations:** Surface sediments consist of coarse-textured till and glacial outwash sand and gravel and postglacial alluvium. The glacial drift thickness varies between 50 and 100 feet. The Precambrian Dunn Creek and Michigamme Formations and Badwater Greenstone subcrop below the glacial drift. There is not a current economic use for these formations. Abandoned iron mines are located one mile to the west. Part of this compartment was previously leased for metallic exploration and potential may still exist. Gravel pits are not located in the area, but there may be some potential. There is no economic oil and gas production in the UP.

**Vehicle Access:** U.S.-2, Stager Lake Road, County recreation trail and woods roads connected to these roads and trail.

**Survey Needs:** Six corners needed for future t-sales.

**Recreational Facilities and Opportunities:** County recreation trail runs through compartment. This area is also used heavily for hunting.

**Fire Protection:**

**Additional Compartment Information:**

- **The following 5 reports from the Operations Inventory System (OIPC) are attached:**
  - ◆ **Cover Type by Age Class**
  - ◆ **Cover Type by Management Objective**
  - ◆ **Compartment Volume Summary**
  - ◆ **Proposed Treatments – No Limiting Factors**
  - ◆ **Proposed Treatments – With Limiting Factors**
  
- **The following information is displayed, where pertinent, on the attached compartment maps:**
  - ◆ **Base feature information, stand numbers, cover types**
  - ◆ **Proposed treatments**
  - ◆ **Proposed road access system**
  - ◆ **Suggested potential old growth**



8/15/2008 8:37:08 AM

Michigan Department of Natural Resources - Operations Inventory System  
Individual Compartment Report

COPPER COUNTRY STATE FOREST

CRYSTAL FALLS FOREST MGT UNIT

IRON COUNTY

COMPARTMENT: 160

Table 3A

(acres shown in boxes)

MANAGEMENT OBJECTIVE TYPE

COVER TYPE	A	S	V	C	G	H	J	I	L	P	N	Q	X	O	B	R	K	Y	F	E	T	D	U	M	Z	W	Total
A Aspen	580																										580
V Bog or Marsh			60																								60
G Grass					27																						27
J Jack Pine							23																				23
L Lowlnd Brush									11																		11
Q Mx Swmp Cnfr												94															94
X Non Stocked													5														5
O Oak														77													77
F Spruce Fir																			13								13
E Swamp Hrdwds																				1							1
Total	580		60		27		23		11			94	5	77					13	1							891

COPPER COUNTRY STATE FOREST

CRYSTAL FALLS FOREST MGT UNIT

IRON COUNTY

COMPARTMENT: **160**

**Table 10 - COMPARTMENT VOLUME SUMMARY - ALL STANDS**

COMPARTMENT SUMMARY			
TOTAL VOLUME		CUT VOLUME	
Hardwood	11075 Cds	Hardwood	5620 Cds
Hardwood	200 Mbf	Hardwood	34 Mbf
Softwood	1870 Cds	Softwood	58 Cds
Softwood	39 Mbf	Sum CutVol	5746 Cds
Sum TotVol	13423 Cds		
<b>Total Cmpt Acres</b>		Acres Proposed For Cut.....	133
891			

**CRYSTAL FALLS FOREST MGT UNIT**

**Proposed Treatments  
With NO Limiting Factors**

**Compartment: 160 Entry Year: 2010**

Stand	Cover Type	Acres	Age	Site Index	Mgt Obj	Condition	Method Cut	Harvest Priority	Cultural Need	FDF Status	
2	A9	41	73	70	aspen (upland)	mature	final harvest	1			
comnts Fmd : Red line will be put around oak clumps to hold half the total stand volume of oak. All trees will be left in these clumps and will serve as the retention areas for stand 2.											
Wld : Clumps selected as retention should not be those areas subject to blowdown.											
14	A6	22	73	65	aspen (upland)	mature	final harvest	1			
comnts Fmd : Red line will be put around oak clumps to hold half the total stand volume of oak. All other trees will be removed from within the red line to help promote oak regeneration. A buffer will be left along the Q-type on the East side of the stand for retention.											
Wld : Areas of oak that are not to be cut should not be those subject to blowdown.											
25	A9	19	73	65	aspen (upland)	mature	final harvest	1			
comnts Fmd : A buffer will be left along the V-type to the North for retention.											
Wld : Partial cut volume eliminating oak from harvest. Specs cut no oak											
27	A9	5	73	65	aspen (upland)	mature	final harvest	1			
comnts Fmd : A buffer will be left along the V-type to the South for retention.											
Wld : Partial cut volume should eliminate oak.Specs will show cutting no oak.											
28	A6	16	73	65	aspen (upland)	mature	final harvest	1			
comnts Fmd : A buffer will be left along the Q-type to the SE for retention.											
34	A9	12	73	65	aspen (upland)	mature	final harvest	1			
comnts Fmd : Leave island on north side of stand for retention.											
Wld : Partial cut volume should reflect holding oak component. Specs cut no oak.											
42	A9	2	73	65	aspen (upland)	mature	final harvest	1			
comnts Fmd : Cut with stand 53 of compartment 161. Retention will be along the Q-type to the East.											
Wld : Partial cut volume should reflect oak is reserved. Specs should be cut no oak.											
46	J6	4	73	60	jack pine	mature	final harvest	1			
comnts Fmd : Jackpine is badly defoliated by jackpine budworm. State owns 1/4 undivided interest. Oak and red pine will be left for retention.											
51	A6	12	73	65	aspen (upland)	mature	final harvest	1			
comnts Fmd : Abuffer will be left along the Q-type to the East for retention.											
401	G0	4			grass	nonstocked		0	opening maintenance		
comnts Fmd : Wildlife opening.											
402	G0	2			grass	nonstocked		0	opening maintenance		
comnts Fmd : Wildlife opening.											
403	G0	1			grass	nonstocked		0	opening maintenance		
comnts Fmd : Wildlife opening.											
<b>Total Acres.....</b>		<b>140</b>									

**Proposed Treatments  
With Limiting Factors**

**Compartment: 160**

**Entry Year: 2010**

---

<b>Stand</b>	<b>Cover Type</b>	<b>Acres</b>	<b>Age</b>	<b>Site Index</b>	<b>Mgt Obj</b>	<b>Condition</b>	<b>Method Cut</b>	<b>Harvest Priority</b>	<b>Cultural Need</b>	<b>FD Status</b>
--------------	-----------------------	--------------	------------	-----------------------	--------------------	------------------	-----------------------	-----------------------------	--------------------------	----------------------

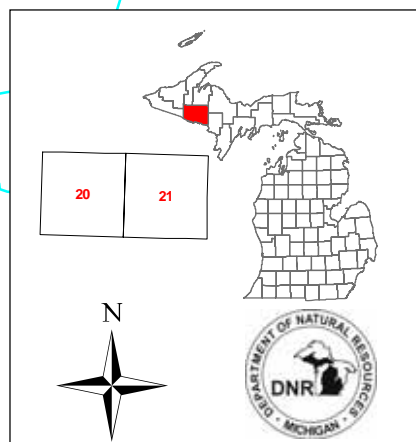
---

TREATMENT LIMITING FACTORS:

---

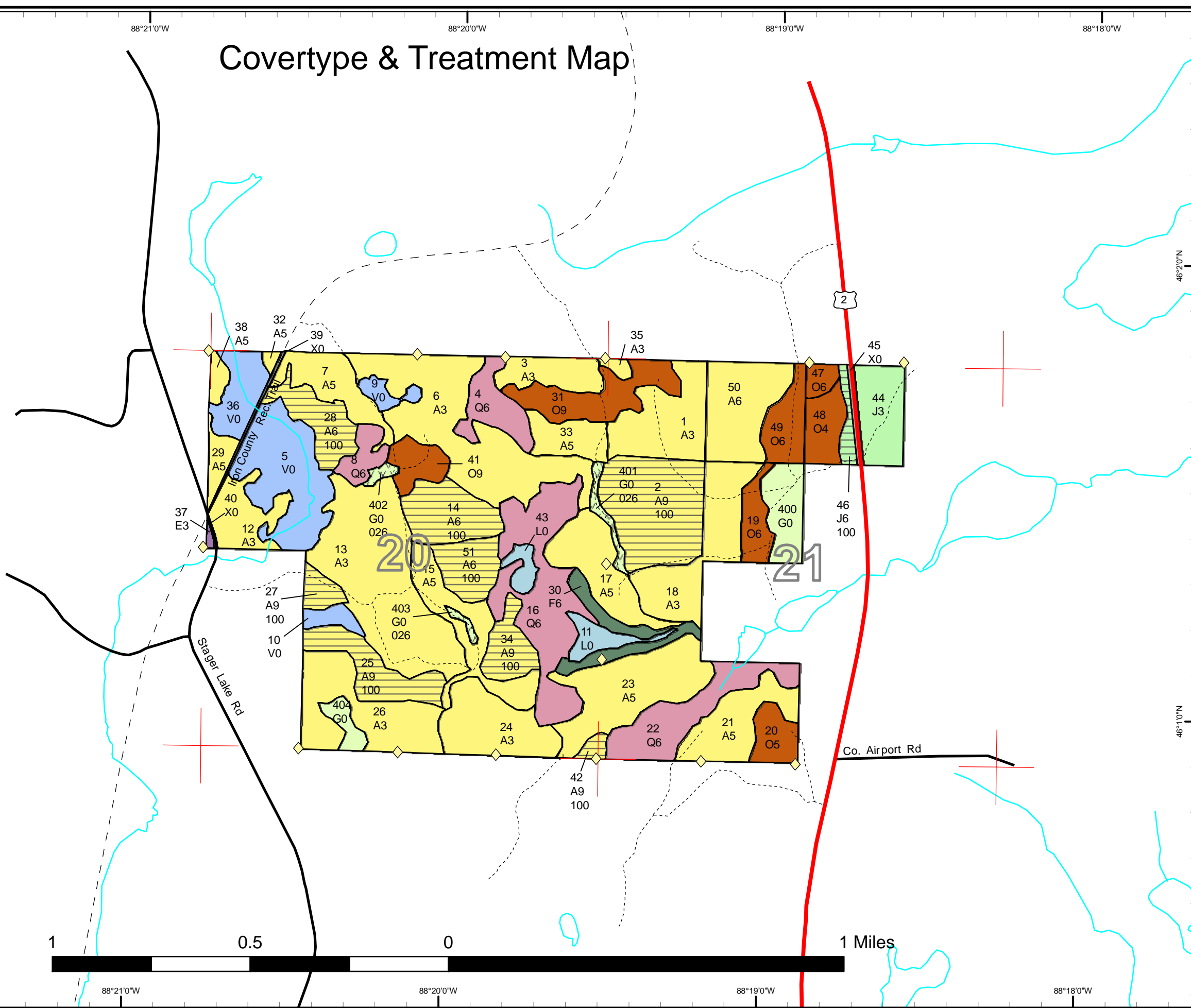
**Total Acres..... 0**

Compartment 160  
 T42N, R32W, Sec. 20, 21  
 County: Iron  
 Unit: Crystal Falls  
 YOE: 2010  
 Acres: 891 GIS Calculated  
 Stand Examiner: Scott Sebero  
 Map Revised: 7/30/2008  
 Map Phase: Pre-Review



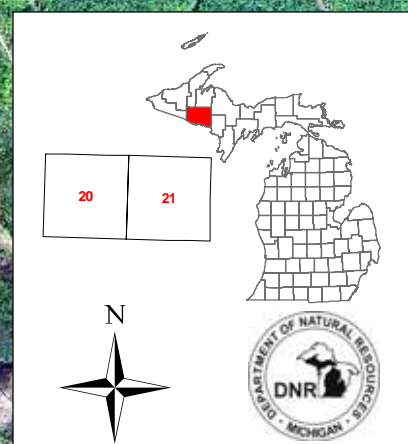
# Covertime & Treatment Map

- Legend**
- ◆ RLS Corners
  - Miris Corners
  - Highways
  - Paved Roads
  - - - Poor Dirt Roads
  - - - Trails
  - Water Features
  - ⬡ US Highway
  - Stand Boundary
  - ▨ 026 - Opening Maintenance
  - ▨ 100 - Final Harvest
  - A - Aspen
  - E - Swamp Hardwoods
  - F - Upland Spruce or Fir
  - G - Grass
  - J - Jack Pine
  - L - Lowland Brush
  - O - Oak
  - Q - Mixed Swamp Conifers
  - V - Bog or Muskeg
  - X - Non-Stocked

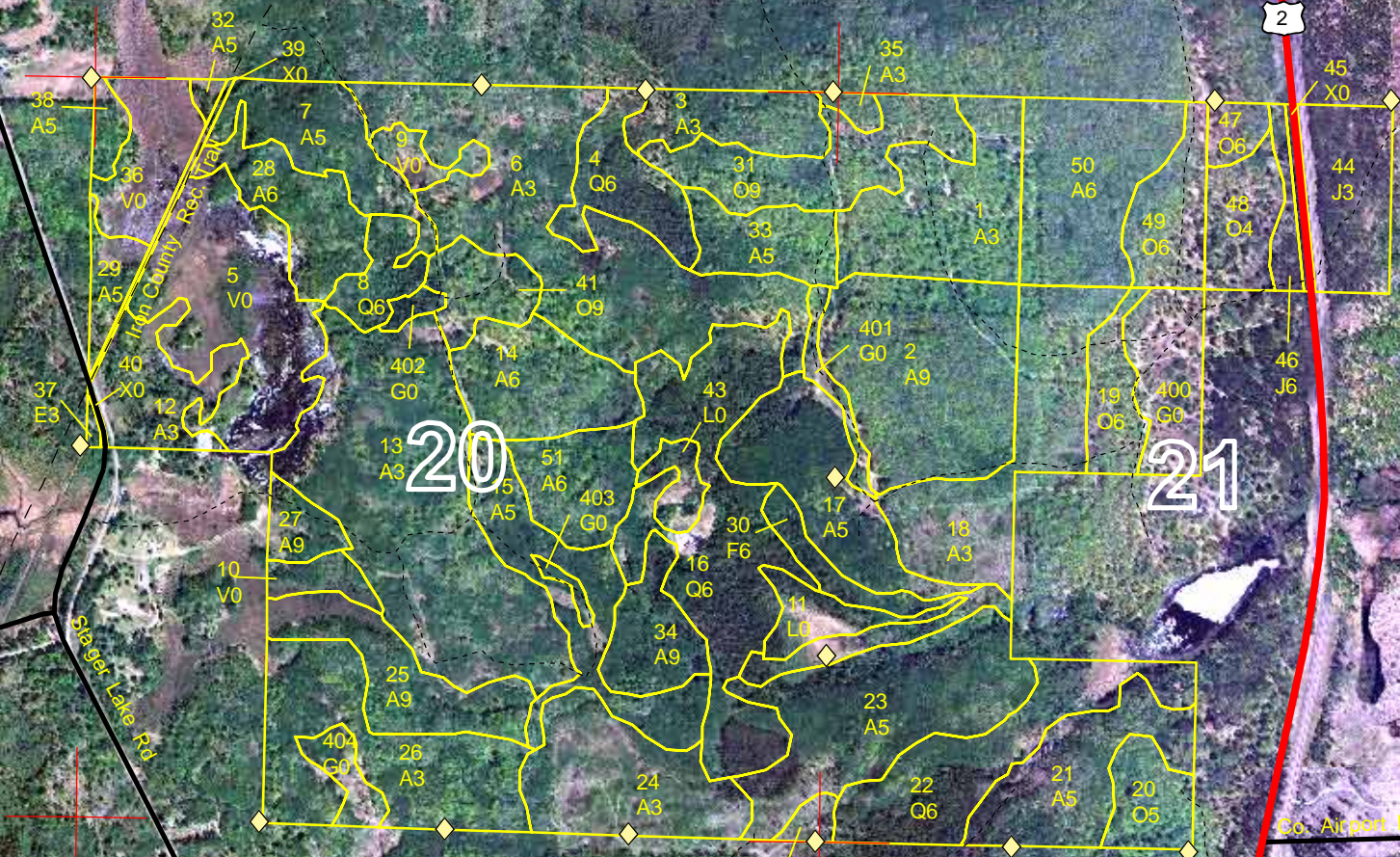


# Stand Boundary Map

Compartment 160  
T42N, R32W, Sec. 20, 21  
County: Iron  
Unit: Crystal Falls  
YOE: 2010  
Acres: 891 GIS Calculated  
Stand Examiner: Scott Sebero  
Map Revised: 7/30/2008  
Map Phase: Pre-Review

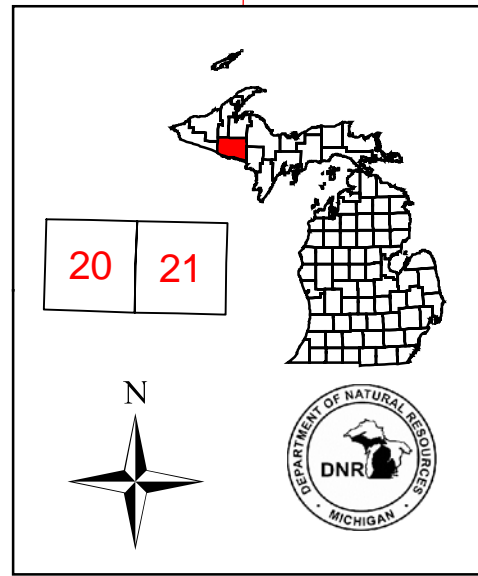


- Legend**
- ◆ RLS Corners
  - Miris Corners
  - Highways
  - Paved Roads
  - - - Poor Dirt Roads
  - ⋯ Trails
  - ⬡ US Highway
  - Stand Boundary



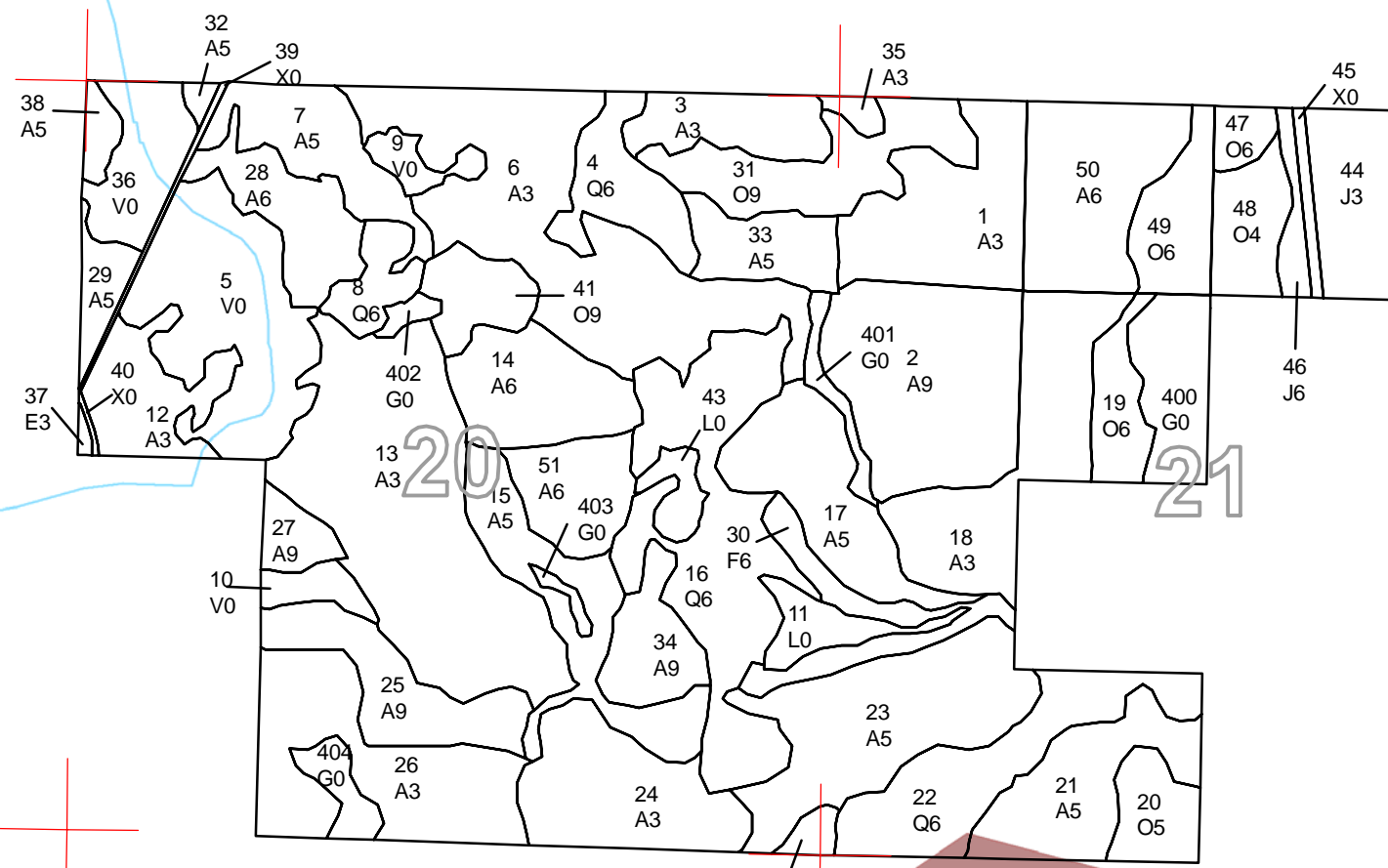
# Dedicated & Proposed Special Conservation Area Map

Compartment 160  
T42N, R32W, Sec. 20, 21  
County: Iron  
Unit: Crystal Falls  
YOE: 2010  
Acres: 891 GIS Calculated  
Stand Examiner: Scott Sebero  
Map Revised: 8/04/2008  
Map Phase: Pre-review



**Legend**

- Miris Corners
- Stand Boundary
- Cold Water Streams
- Deer Wintering Areas



46°20'N

46°10'N

46°20'N

46°10'N

88°21'0"W

88°20'0"W

88°19'0"W

88°18'0"W

88°21'0"W

88°20'0"W

88°19'0"W

88°18'0"W



**DEDICATED CONSERVATION AREA DETAILS**

\* This is a list of Dedicated Biodiversity Areas for this compartment along with a 1/4 mile buffer surrounding the compartment. Refer to Dedicated Conservation Area Map for areas that the below listed Conservation Areas are located.

ERA = Ecological Reference Area  
 HCVA = High Conservation Value Area  
 SCA = Special Conservation Area

Conservation Area	Type	Description
SCA	Cold Water Stream	A coldwater stream has temperature and dissolved oxygen conditions that allow naturally-reproduced or stocked trout populations and those of other coldwater fish species (e.g., slimy sculpin) to persist from year to year. Coldwater streams in Michigan typically provide these conditions due to substantial contributions of groundwater to their stream flows. Such streams are established by Director's action and designated as trout resources by Fisheries Order 210.
SCA	Habitat Area	An area that provide some specific need for the life cycle of wildlife species, including State Wildlife Areas and Waterfowl Production Areas, deer wintering complexes in lowland conifer communities, grassland openings and savannas. Habitat areas are distinct from critical habitat designated for recovery of endangered or threatened species (such as Kirtland's warbler or piping plover areas) in that they are more general in nature, are not primarily associated with threatened or endangered species, and are not covered by species recovery plans that are developed in cooperation with Federal agencies.