



**ATLANTA FOREST MANAGEMENT UNIT
COMPARTMENT REVIEW PRESENTATION**

COMPARTMENT #50 ENTRY YEAR: 2011

Compartment Acreage: 1468 (GIS)

County: Montmorency

Revision Date: February 9, 2009

Stand Examiner: Robert Theiner

Legal Description: T-31-N, R-3-E, Sections 3, 10 and 15

Management Goals: The main goal in this compartment is to conduct multiple resource management for the good of the citizens of the State of Michigan. Red Pine and Jack Pine are the largest timber components in the northern part of the compartment and Aspen, Oak, Red pine and Jack pine are the timber components in the south. Several stands of swamp conifer in the central portion of the compartment.

Soil and Topography: Generally dry level uplands with the Brush Creek drainage bisecting the compartment. Some small swamp pockets. Grayling-Graycalm-Montcalm association dominant.

Ownership Patterns, Development, and Land Use in and Around the Compartment: A few hunting camps adjacent to state lands, eighty acres and less. The NW/2 of section 10 is the Twin Dams Subdivision, some of these are year round residences. Illegal ORV activity exist within most of this compartment, the majority of the damage is in section 10. Resource damage does exist in this compartment.

Unique, Natural Features: None listed.

Archeological, Historical, and Cultural Features: Potential exists in several locations

Special Management Designations or Considerations:

Watershed and Fisheries Considerations: The Brush Creek flows from Lake Hiawatha, through section 10, (Twin Dams Subdivision) to the east joining the Thunder Bay River in Hillman.

Wildlife Habitat Considerations and Objectives: This compartment is long an narrow and intersects both lowland and upland components dominated by aspen, red pine, jack pine, and conifer swamps. The compartment is easily accessible to hunters via Voyer Lake Rd, Brush Creek Truck Trail, and County Road 624. Therefore, game species management remains a high priority. Proposed aspen harvest will provide food and cover for several game species including white-tailed deer, American woodcock, elk, ruffed grouse, and wild turkey. This management also benefits wildlife dependent on early-successional habitats like golden-

winged warbler, chestnut-sided warbler, and long-tailed weasel. Adjacent mesic stands and mature forests provide diverse habitat for raptors, woodpeckers, small mammals, salamanders, songbirds, bobcats, and black bears, as well as yarding areas for deer.

Mineral Resource and Development Concerns and/or Restrictions: Surface sediments consist of coarse-textured glacial till. The glacial drift thickness varies between 400 and 600 feet. Beneath the glacial drift is the Devonian Antrim Shale. The Antrim is quarried for cement products elsewhere in the State. A gravel pit is located in Section 8 and potential is good on the uplands. The Compartment is mostly leased and is being developed for the Antrim Shale.

Vehicle Access: Running north and south through the middle of the compartment is Voyer Lake Road, splitting sections 3 and 10 and running east and west is County Road 624 (paved), Brush Creek Truck Trail runs east and west in the southern portion of section 15.

Survey Needs: The potential exist along the east edge of The Twin Dams Subdivision.

Recreational Facilities and Opportunities: Recreation is a large part of this compartment, with an ORV trail in the north and a snowmobile trail in the south.

Fire Protection: Several fires have been extinguished in The Twin Dams Subdivision.

- **The following 5 reports from the Operations Inventory System (OIPC) are attached:**
 - ◆ **Cover Type by Age Class**
 - ◆ **Cover Type by Management Objective**
 - ◆ **Compartment Volume Summary**
 - ◆ **Proposed Treatments – No Limiting Factors**
 - ◆ **Proposed Treatments – With Limiting Factors**

- **The following information is displayed, where pertinent, on the attached compartment maps:**
 - ◆ **Base feature information, stand numbers, cover types**
 - ◆ **Proposed treatments**
 - ◆ **Proposed road access system**
 - ◆ **Suggested potential old growth**

8/4/2009 8:51:24 AM

Michigan Department of Natural Resources - Operations Inventory System
Individual Compartment Report

MACKINAW STATE FOREST

ATLANTA FOREST MGT UNIT

MONTMORENCY COUNTY

COMPARTMENT: 50

Table 3

(acres shown in boxes)

STAND AGE CLASS

COVER TYPE	Not Coded	0-9	10-19	20-29	30-39	40-49	50-59	60-69	70-79	80-89	90-99	100-109	110-119	120-129	130-139	140-149	150-159	All Aged	Total
Aspen		11	18	63	56	86	64	18		3									319
Bog or Marsh	6																		6
Grass	22																		22
Jack Pine		51	144	1	2	17	6	7	2	47									277
Lowlnd Brush	29																		29
Lowlnd Poplr					5	17			2	5									29
Marsh	1																		1
Mx Swmp Cnfr				1	1					26	42	9	60						139
Non Stocked	23																		23
Oak						15			27	24									66
Red Pine		72		29	24		48		23	269									465
Tamarack											5								5
Upland Brush	38																		38
White Pine					24													25	49
Total	119	134	162	94	112	135	118	25	54	374	47	9	60					25	1468

8/4/2009 8:51:29 AM

Michigan Department of Natural Resources - Operations Inventory System
Individual Compartment Report

MACKINAW STATE FOREST

ATLANTA FOREST MGT UNIT

MONTMORENCY COUNTY

COMPARTMENT: 50

Table 3A

(acres shown in boxes)

MANAGEMENT OBJECTIVE TYPE

COVER TYPE	A	S	V	C	G	H	J	I	L	P	N	Q	X	O	B	R	K	Y	F	E	T	D	U	M	Z	W	Total
A Aspen	319																										319
V Bog or Marsh			6																								6
G Grass					22																						22
J Jack Pine							277																				277
L Lowlnd Brush									29																		29
P Lowlnd Poplr										29																	29
N Marsh											1																1
Q Mx Swmp Cnfr												139															139
X Non Stocked													23														23
O Oak														66													66
R Red Pine							71								394												465
T Tamarack																					5						5
U Upland Brush					5																			33			38
W White Pine																										49	49
Total	319		6		27		348		29	29	1	139	23	66	394						5			33		49	1468

MACKINAW STATE FOREST

ATLANTA FOREST MGT UNIT

MONTMORENCY COUNTY

COMPARTMENT: **50**

Table 10 - COMPARTMENT VOLUME SUMMARY - ALL STANDS

COMPARTMENT SUMMARY			
TOTAL VOLUME		CUT VOLUME	
Hardwood	4094 Cds	Hardwood	2558 Cds
Hardwood	412 Mbf	Hardwood	127 Mbf
Softwood	2282 Cds	Softwood	239 Cds
Softwood	3886 Mbf	Softwood	2306 Mbf
Sum TotVol	14972 Cds	Sum CutVol	7663 Cds
Total Cmpt Acres		Acres Proposed For Cut.....	367
1468			

ATLANTA FOREST MGT UNIT

**Proposed Treatments
With NO Limiting Factors**

Compartment: 50

Entry Year: 2011

Stand	Cover Type	Acres	Age	Site Index	Mgt Obj	Condition	Method Cut	Harvest Priority	Cultural Need	FDF Status
5	J5	7	67	50	jack pine	mature	final harvest	3	planting	
comnts Fmd : A SMALL PATCH OF JACK PINE. Too small of an area for retention.										
8	R9	29	78	55	jack pine	mature	final harvest	2	planting	
comnts Fmd : PLANTATION--ORV TRAIL in the north. Close off other trails into the stand. ORV trail will need improvement for operations. Partially PVCd.										
9	R9	10	79	55	red pine	mature	final harvest	2	planting	
comnts Fmd : Red maple understory. ORV trail will need improvement for operations. Acceptable regeneration is red pine resulting in a medium or well stocked stand.										
11	R6	2	79	55	red pine	immature	shelterwood-seed	3		
comnts Fmd : Small stand. Acceptable regeneration is any combination of aspen, oak, jack pine, red pine, or white pine resulting in a medium or well stocked stand.										
17	R9	34	79	58	red pine	mature	final harvest	1	planting	
comnts Fmd : PATCHY, VARIABLE REPRO, generally very open, nice visual corridor, Detroit News plantation. Acceptable regeneration is any combination of aspen, oak, jack pine, red pine, or white pine resulting in a medium or well stocked stand Wld : Good to excellent oak and maple coming in as understory. Avoid damage to oak regen										
19	R9	74	79	58	red pine	mature	final harvest	1	planting	
comnts Fmd : PATCHY, VARIABLE REPRO, generally very open, nice visual corridor, Detroit News plantation Acceptable regeneration is red pine. Wld : Avoid damage to oak regen.										
30	P6	2	69	58	balsam poplar & swamp aspen and swamp white birch	mature	final harvest	2	natural regeneration	
comnts Fmd : SMALL KNOLL ALONG ROAD, Leave Oak. Any mixture of aspen/oak and conifer is acceptable regeneration.										
35	A6	24	44	62	aspen (upland)	immature	final harvest	2		
comnts Fmd : Heavy red maple understory. Any mixture of aspen/oak and conifer is acceptable regeneration. Wld : invoke shrub (soft mast) specs										
36	O9	24	86	60	oak	immature	shelterwood-seed	2	natural regeneration	
comnts Fmd : SOME GOOD OAK STEMS, FEW ASPEN REMAIN, WAS THINNED in past. Trail was closed, reclose after harvest. Scarify. Follow-up scarification as needed. Wld : excellent small game habitat										
37	A6	4	51	70	aspen (upland)	mature	final harvest	1		
comnts Fmd : LEAVE CONIFER AND OAK. Some white birch in stand. Any mixture of aspen/oak/birch and conifer is acceptable regeneration.										
49	A5	9	60	56	aspen (upland)	two aged	final harvest	2		
comnts Fmd : ASPEN-two ages, SCATT MAPLE & OAK CLUMPS, some white and red pine. Pockets of A-3 and red maple saps. Leave oak, white and red pine. Any mixture of aspen/oak and conifer is acceptable regeneration.										
54	A6	57	49	60	aspen (upland)	mature	final harvest	1		
comnts Fmd : SOME LOW BRUSHY AREAS, WEST END HAS KNOB WITH SOME OAK & PINE RESID. Do not cut red pine, white pine, oak. Any mixture of aspen/oak and conifer is acceptable regeneration. Wld : invoke down dead wood specs. ELK USE AS TRAVEL CORRIDOR										
57	A5	9	60	56	aspen (upland)	two aged	final harvest	2		
comnts Fmd : ASPEN-two ages, SCATT MAPLE & OAK CLUMPS, some white and red pine. Pockets of A-3 and red maple saps. Leave oak, white and red pine. Any mixture of aspen/oak and conifer is acceptable regeneration.										
60	R4	23	7	48	jack pine	immature		0	planting	
comnts Fmd : Cut 2002 all A-J-RM, sale 015-01.										

ATLANTA FOREST MGT UNIT

**Proposed Treatments
With NO Limiting Factors**

Compartment: 50

Entry Year: 2011

Stand	Cover Type	Acres	Age	Site Index	Mgt Obj	Condition	Method Cut	Harvest Priority	Cultural Need	FDF Status
62	J6	45	80	58	jack pine	mature	final harvest	2	planting	
comnts Fmd : SEMI-OPEN, VARIABLE SIZE,FEW RP LOGS MOSTLY BY SNOW MOBILE TRAIL. Leave oak and red pine for visual. Acceptable regeneration is any combination of aspen, oak, jack pine, red pine, or white pine resulting in a medium or well stocked stand Wld : retain oak										
65	R4	12	7	56	jack pine	immature		0	planting	
comnts Fmd : Cut 2002 all A-J-RM, sale 015-01.										
136	U0	1			grass	nonstocked		0	opening maintenance	
Wld : small opening adjacent to good small game habitat. Native grasses present. Remove woody encroachment, retain soft mast species.										
138	U0	3			grass	nonstocked		0	opening maintenance	
Wld : opening adjacent to good small game habitat. Native grasses present. Remove woody encroachment, retain soft mast species. Do not allow use during harvest of adjacent forested stands										
140	U2	5		65	upland brush	nonstocked		0	opening maintenance	
comnts Fmd : BRUSH ALONG EDGES OF MITCHELL FIELD Wld : Could burn along with stands 141, 142, and 444 to set back succession and enhance ground vegetation										
141	U2	5		65	upland brush	nonstocked		0	opening maintenance	
comnts Fmd : BRUSH ALONG EDGES OF MITCHELL FIELD Wld : Could burn along with stands 140, 142, and 444 to set back succession and enhance ground vegetation										
142	U2	5		65	upland brush	nonstocked		0	opening maintenance	
comnts Fmd : BRUSH ALONG EDGES OF MITCHELL FIELD Wld : Could burn along with stands 140, 141, and 444 to set back succession and enhance ground vegetation										
154	U0	1		70	grass	nonstocked		0	opening maintenance	
comnts Fmd : CONVERTING TO ASPEN RAPIDLY Wld : Excellent wildlife stand. Filled with soft mast producing plants (apple, cherry, r.b.).										
209	R9	7	79	55	red pine	mature	final harvest	2	planting	
comnts Fmd : Acceptable regeneration is red pine resulting in a medium or well stocked stand.										
223	R8	7	79	58	jack pine	mature	final harvest	2	planting	
comnts Fmd : Located on the east side of stand 23, jack pine removed. Acceptable regeneration is any combination of aspen, oak, jack pine, red pine, or white pine resulting in a medium or well stocked stand.										
240	A6	4	44	60	aspen (upland)	mature	final harvest	2		
comnts Fmd : Cut with stand 335. Any mixture of aspen/oak and conifer is acceptable regeneration.										
328	U0	3		46	upland brush	nonstocked		0	opening maintenance	
comnts Fmd : SCATTERED HDWD, SMALL PATCH OF A3 IN WEST END-ATV AREA. Wld : ORV use - Block hills and trail from west. Remnant opening that has filled in with brush and jack pine. Maintain as open. turkey and deer sign present.										
335	A6	11	44	62	aspen (upland)	mature	final harvest	2		
comnts Fmd : WAS CUT BY KG IN 1963 IN EAST PART--BROKE OUT P TYPE TO NW (235) AND A6 TO NE (335)-FMLY 35. Cut with stand to the south, 240. Acceptable regeneration is any combination of aspen, oak, jack pine, red pine, or white pine resulting in a medium or well stocked stand.										

ATLANTA FOREST MGT UNIT

**Proposed Treatments
With NO Limiting Factors**

Compartment: 50

Entry Year: 2011

Stand	Cover Type	Acres	Age	Site Index	Mgt Obj	Condition	Method Cut	Harvest Priority	Cultural Need	fdf Status
336	A6	8	44	62	aspen (upland)	mature	final harvest	2		
comnts Fmd : WAS CUT BY KG IN 1963 IN EAST PART--BROKE OUT P TYPE TO NW (235) AND A6 TO NE (335)-FMLY 35. Cut with stand to the south, 240. Any mixture of aspen/oak and conifer is acceptable regeneration.										
443	G0	3		55	grass	nonstocked		0	opening maintenance	
comnts Fmd : SIGN TRESPASS. Large trees around opening. Trail into opening is wet. Needs work. Wld : Good wildlife opening in need of work. Plant food/cover crops to maintain the type. Protect soft mast bushes. Borders private land on east edge of stand.										
444	G0	3		60	grass	nonstocked		0	opening maintenance	
comnts Fmd : MITCHELL FIELD Wld : Old air strip. Stand is providing excellent opening habitat for wildlife and is in good condition. Could burn along with stands 140, 141, and 142 to set back succession and enhance ground vegetation. Some native grasses present.										
446	G0	2			grass	nonstocked		0	opening maintenance	
comnts Fmd : Wld : Wildlife opening in need of work. Weeds, some trash. Plant food/cover crops.										
447	G0	4		56	grass	nonstocked		0	opening maintenance	
comnts Fmd : A portion of this stand may have been planted along with stand to the north. Wld : Good wildlife opening in need of work. Very light sandy soil with oil pad and head. Private land ORV activity from the east is using opening. Plant cover crop to maintain type and stabilize the soil. Work on ORV control.										
459	G0	1		60	grass	nonstocked		0	opening maintenance	
comnts Fmd : Along snowmobile trail.										
Total Acres.....		438								

**Proposed Treatments
With Limiting Factors**

Compartment: 50

Entry Year: 2011

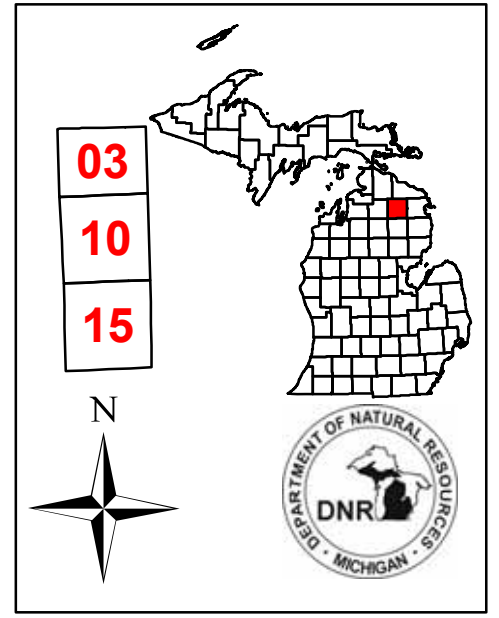
Stand	Cover Type	Acres	Age	Site Index	Mgt Obj	Condition	Method Cut	Harvest Priority	Cultural Need	FD Status
--------------	-----------------------	--------------	------------	-----------------------	--------------------	------------------	-----------------------	-----------------------------	--------------------------	----------------------

TREATMENT LIMITING FACTORS:

Total Acres.....0

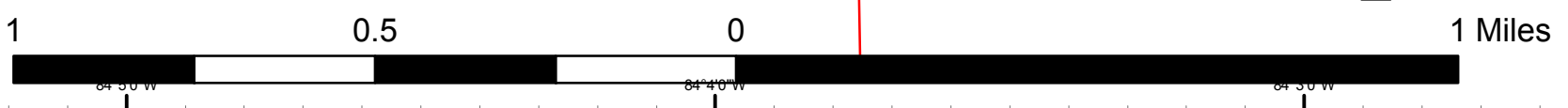
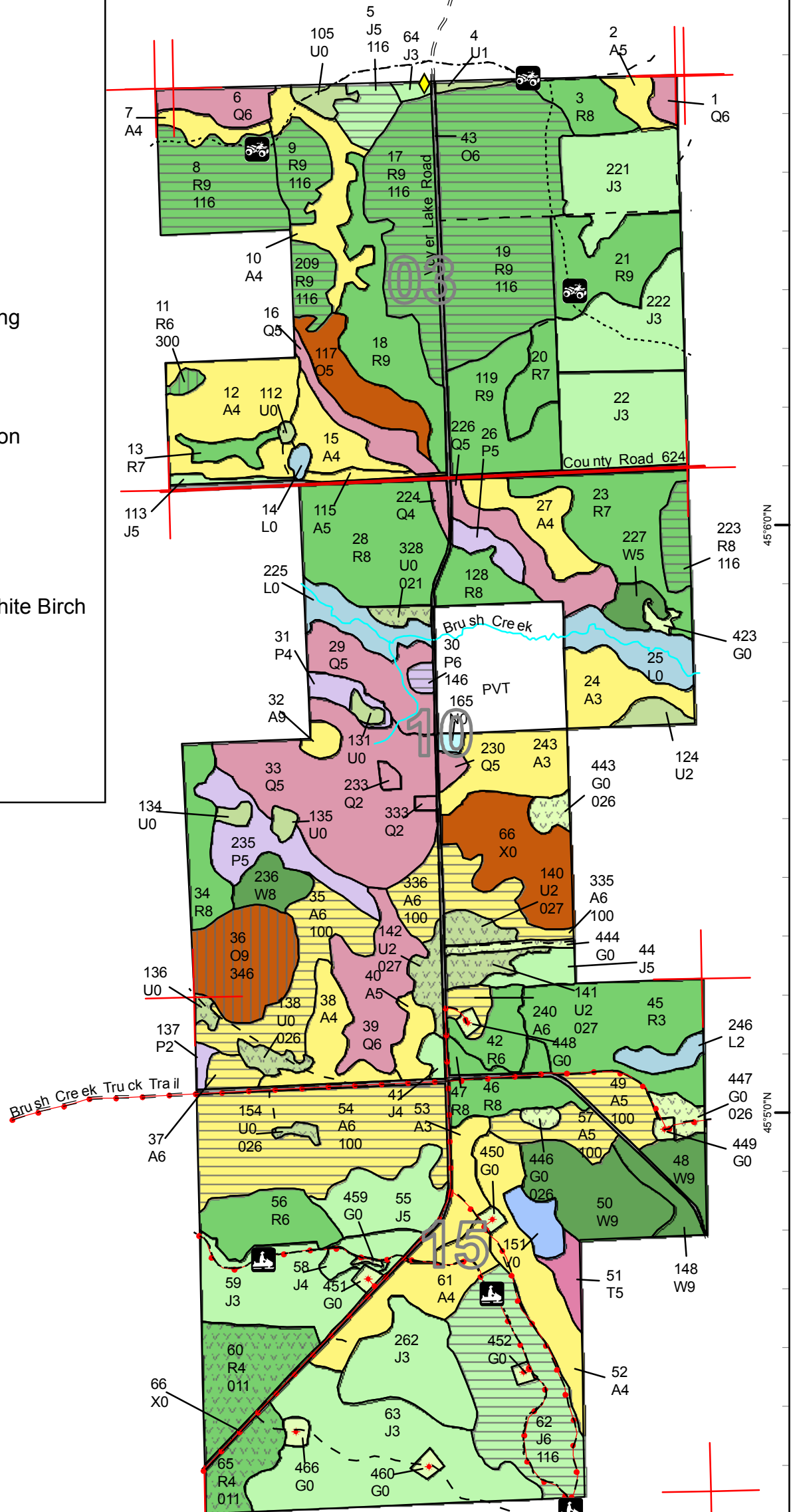
Covertime & Treatment Map

Compartment 50
 T31N, R03E, Sec. 3, 10, 15
 County: Montmorency
 Unit: Atlanta
 YOE: 2011
 Acres: 1,468 GIS Calculated
 Stand Examiner: Robert Theiner
 Map Revised: 8/03/2009
 Map Phase: Pre-review



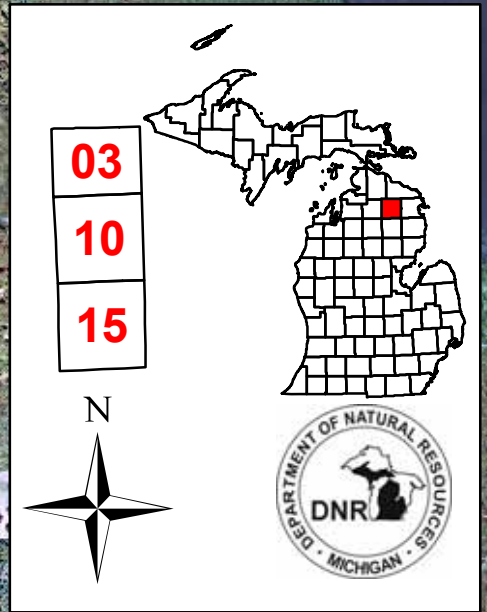
Legend

- RIs Corners
- Miris Corners
- County Paved Roads
- Gravel Roads
- Poor Dirt Roads
- Trails
- Gas Pipelines
- Water Features
- Gas Wells
- ORV Trails
- Snowmobile Trails
- Stand Boundary
- 011 - Planting/Hand Tools
- 021 - Opening Maintenance/Hand Tools
- 026 - Opening Maintenance
- 027 - Opening Maintenance/Prescribed Burning
- 100 - Final Harvest
- 116 - Final Harvest/Planting
- 146 - Final Harvest/Natural Regeneration
- 300 - Shelterwood - Seed
- 346 - Shelterwood - Seed/Natural Regeneration
- A - Aspen
- G - Grass
- J - Jack Pine
- L - Lowland Brush
- N - Marsh
- O - Oak
- P - Balsam Poplar, Swamp Aspen, Swamp White Birch
- Q - Mixed Swamp Conifers
- R - Red Pine
- T - Tamarack
- U - Upland Brush
- V - Bog or Muskeg
- W - White Pine
- X - Non-Stocked



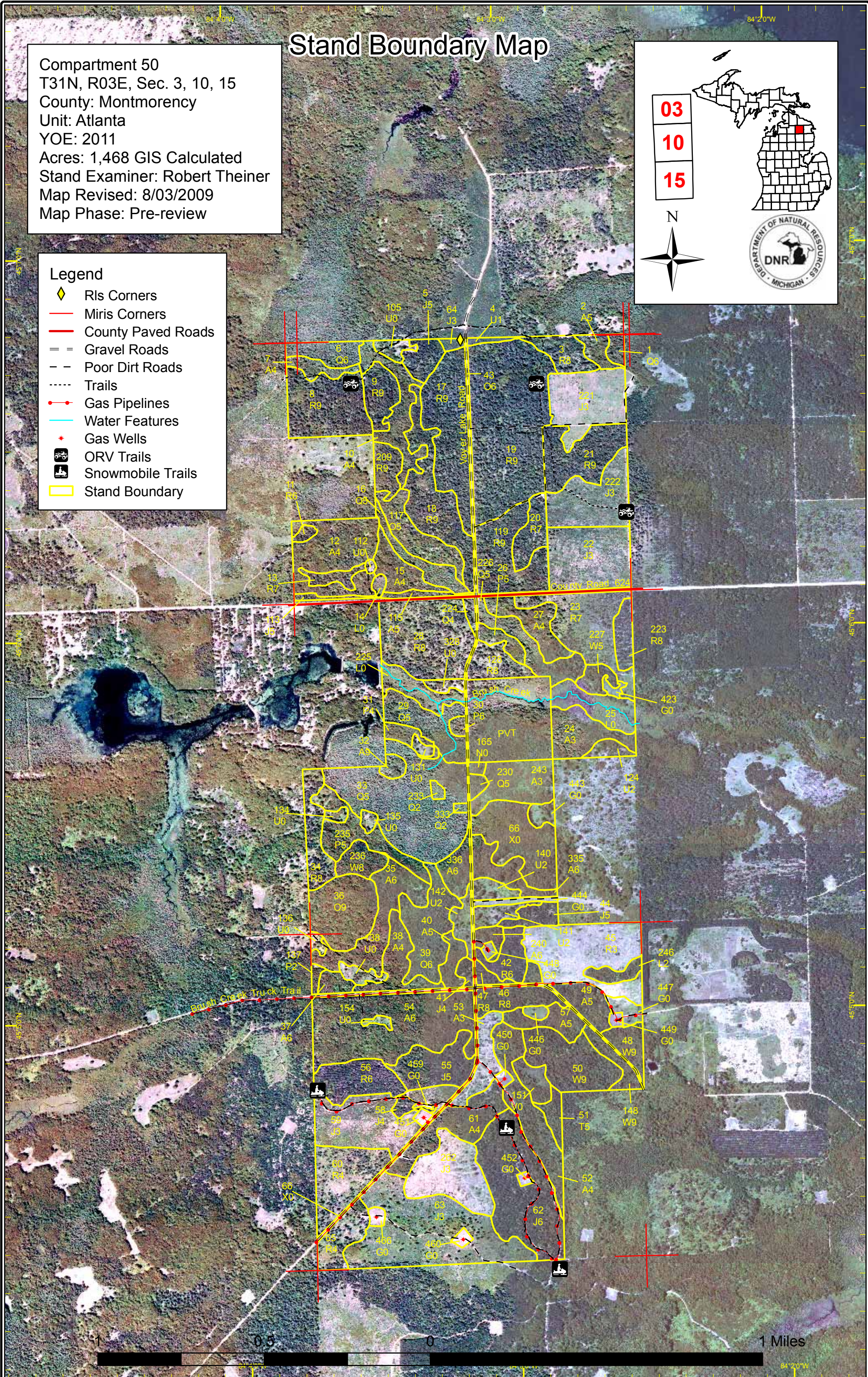
Stand Boundary Map

Compartment 50
 T31N, R03E, Sec. 3, 10, 15
 County: Montmorency
 Unit: Atlanta
 YOE: 2011
 Acres: 1,468 GIS Calculated
 Stand Examiner: Robert Theiner
 Map Revised: 8/03/2009
 Map Phase: Pre-review



Legend

- RIs Corners
- Miris Corners
- County Paved Roads
- Gravel Roads
- Poor Dirt Roads
- Trails
- Gas Pipelines
- Water Features
- Gas Wells
- ORV Trails
- Snowmobile Trails
- Stand Boundary

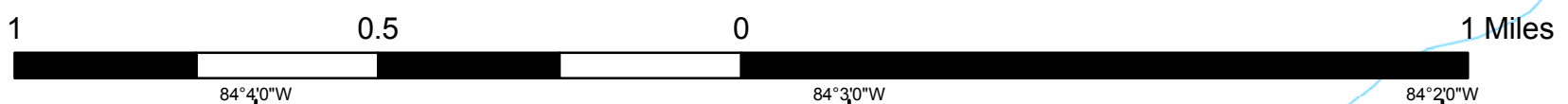
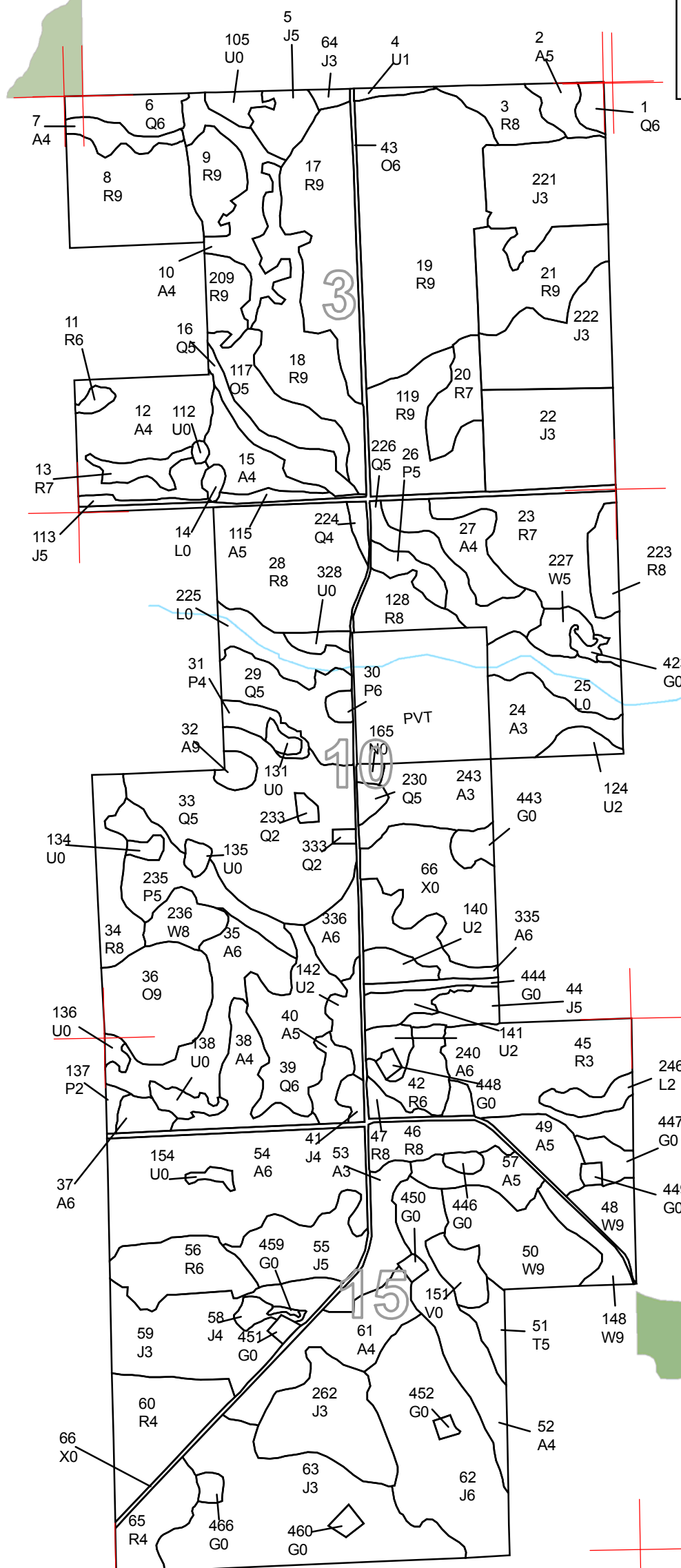
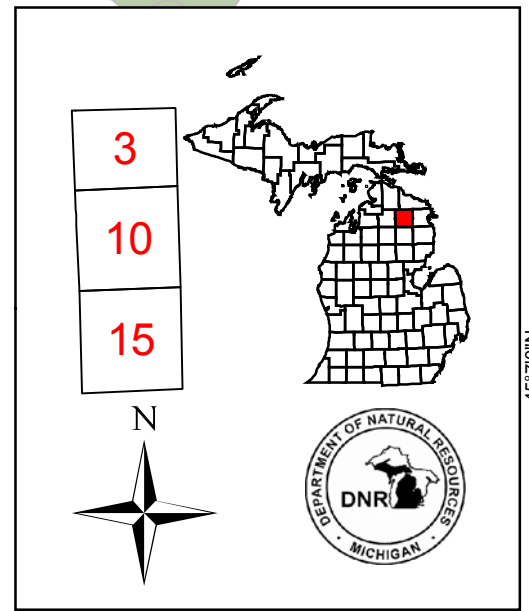


0 0.5 1 Miles

Dedicated & Proposed Special Conservation Area Map

Compartment 50
 T31N, R03E, Sec. 3, 10, 15
 County: Montmorency
 Unit: Atlanta
 YOE: 2011
 Acres: 1,468 GIS Calculated
 Stand Examiner: Robert Theiner
 Map Revised: 8/03/2009
 Map Phase: Pre-review

- Legend**
- Miris Corners
 - Stand Boundary
 - Cold Water Streams
 - OI Special Conservation Areas
 - Potential Old Growth Stands
 - Boat Access Sites





DEDICATED CONSERVATION AREA DETAILS

* This is a list of Dedicated Biodiversity Areas for this compartment along with a 1/4 mile buffer surrounding the compartment. Refer to Dedicated Conservation Area Map for areas that the below listed Conservation Areas are located.

ERA = Ecological Reference Area
 HCVA = High Conservation Value Area
 SCA = Special Conservation Area

Conservation Area	Type	Description
SCA	Cold Water Stream	A coldwater stream has temperature and dissolved oxygen conditions that allow naturally-reproduced or stocked trout populations and those of other coldwater fish species (e.g., slimy sculpin) to persist from year to year. Coldwater streams in Michigan typically provide these conditions due to substantial contributions of groundwater to their stream flows. Such streams are established by Director's action and designated as trout resources by Fisheries Order 210.
SCA	Potential Old Growth Areas	This category contains stands were identified for a broad range of reasons and were coded in the OI database as stand condition 8 as potential old growth (POG). Approximately 310,000 acres have been identified through the Operations Inventory (OI)/Compartment Review process. For stands in Year of Entry 2008 and forward, potential old growth is managed for the identified objective until it is: 1) vetted through the Biodiversity Conservation Planning Process (BCPP) and given a specific designation and objective (as an ERA, HCVA, or other type of SCA) and is released from the potential old growth designation; or 2) it is released from the potential old growth designation via the Compartment Review process.