



ATLANTA FOREST MANAGEMENT UNIT
COMPARTMENT REVIEW PRESENTATION
COMPARTMENT 048 ENTRY YEAR: 2010

Compartment Acreage: 1557 County: Montmorency

Revision Date: October 16, 2008

Stand Examiner: Barber

Legal Description: T31N, R3E, Sections 1, 12, 13 & 24.

RMU (if applicable):

Management Goals: Recreation, timber management.

Soil and Topography: Terrain is generally level, and dominated by PArVHa/PArVVb, and PVCd habitat types.

Ownership Patterns, Development, and Land Use in and Around the Compartment: Surrounding land is mostly other state land and scattered hunting camps. Urban rings around lakes exist to the east.

Unique, Natural Features (include only non-site specific and non-sensitive information): One or more occurrences have been reported for this compartment.

Archeological, Historical, and Cultural Features (include only non-site specific and non-sensitive information): None Reported.

Special Management Designations or Considerations: None.

Watershed and Fisheries Considerations: No special considerations exist for this compartment.

Wildlife Habitat Considerations:

Mineral Resource and Development Concerns and/or Restrictions: Surface sediments consist of coarse-textured glacial till and glacial outwash sand and gravel and postglacial alluvium. The glacial drift thickness varies between 200 and 400 feet. Beneath the glacial drift is the Devonian Antrim Shale. The Antrim is quarried for cement products elsewhere in the State. Gravel pits are located in the area and potential is good on the uplands. The Compartment is mostly leased, partly drilled and is producing gas from the Antrim Shale.

Vehicle Access: Roads to be closed are shown on the compartment map as closed or abandoned.

Survey Needs: None.

Recreational Facilities and Opportunities: ORV trails and routes, snowmobile trails.

Fire Protection: Atlanta MU and Hillman VFD.

Additional Compartment Information:

- **The following 5 reports from the Operations Inventory System (OIPC) are attached:**
 - ◆ **Cover Type by Age Class**
 - ◆ **Cover Type by Management Objective**
 - ◆ **Compartment Volume Summary**
 - ◆ **Proposed Treatments – No Limiting Factors**
 - ◆ **Proposed Treatments – With Limiting Factors**

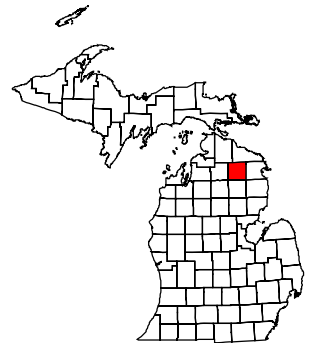
- **The following information is displayed, where pertinent, on the attached compartment maps:**
 - ◆ **Base feature information, stand numbers, cover types**
 - ◆ **Proposed treatments**

- ◆ **Proposed road access system**
- ◆ **Suggested potential old growth**

Stand Boundary Map

Compartment 48
 T31N, R03E, Sec. 1, 13, 24
 County: Montmorency
 Unit: Atlanta
 YOE: 2010
 Acres: 1,557 GIS Calculated
 Stand Examiner: Richard Barber
 Map Revised: 8/13/2008
 Map Phase: Pre-review

- 1
- 12
- 13
- 24



Legend

- Miris Corners
- County Paved Road
- Paved Road
- Gravel Road
- Poor Dirt Road
- Closed Road
- Trails
- ORV Trails
- ORV Routes
- Snowmobile Trails
- Intermittent Stream/Drain
- Stream
- Stand Boundaries

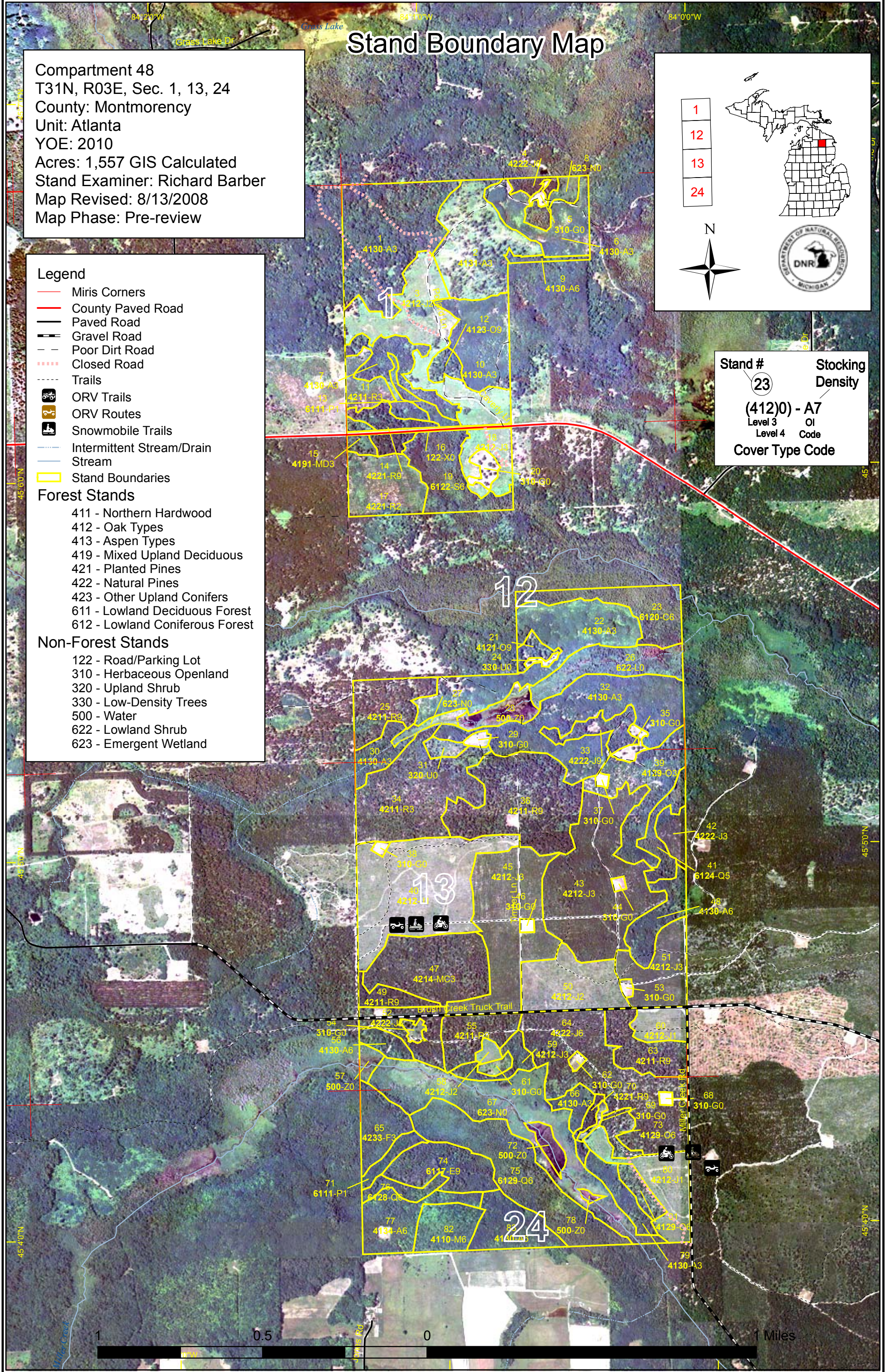
Forest Stands

- 411 - Northern Hardwood
- 412 - Oak Types
- 413 - Aspen Types
- 419 - Mixed Upland Deciduous
- 421 - Planted Pines
- 422 - Natural Pines
- 423 - Other Upland Conifers
- 611 - Lowland Deciduous Forest
- 612 - Lowland Coniferous Forest

Non-Forest Stands

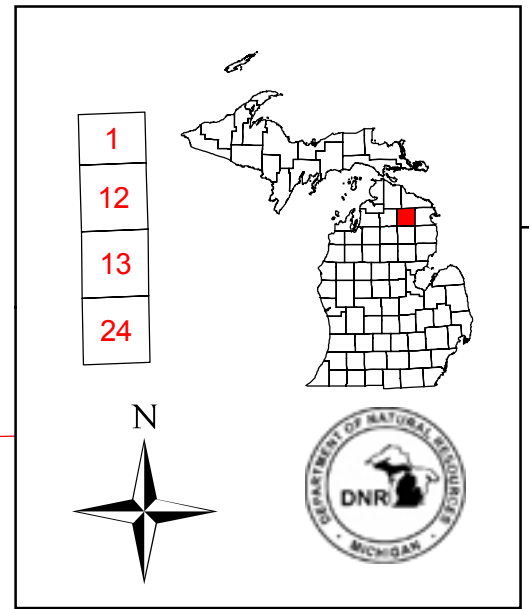
- 122 - Road/Parking Lot
- 310 - Herbaceous Openland
- 320 - Upland Shrub
- 330 - Low-Density Trees
- 500 - Water
- 622 - Lowland Shrub
- 623 - Emergent Wetland

Stand #
 23
Stocking Density
 (412)0 - A7
 Level 3 OI
 Level 4 Code
Cover Type Code



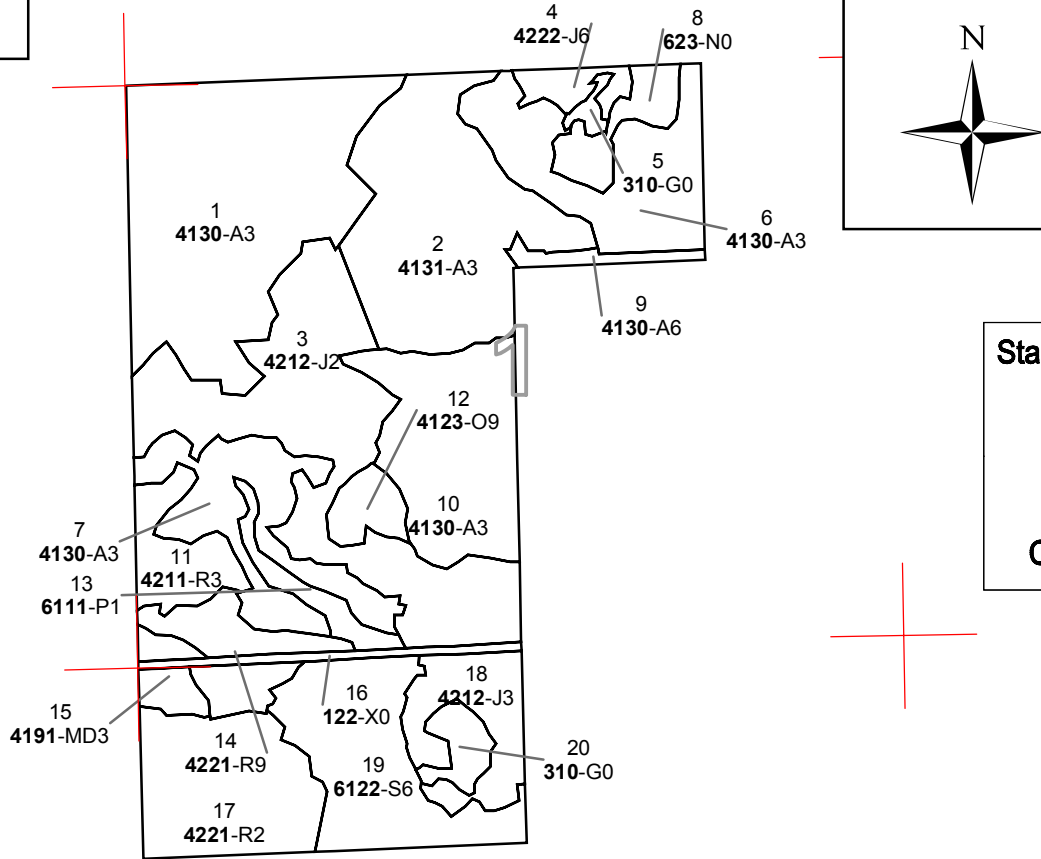
Dedicated & Proposed Special Conservation Area Map

Compartment 48
 T31N, R03E, Sec. 1, 13, 24
 County: Montmorency
 Unit: Atlanta
 YOE: 2010
 Acres: 1,557 GIS Calculated
 Stand Examiner: Richard Barber
 Map Revised: 8/13/2008
 Map Phase: Pre-review

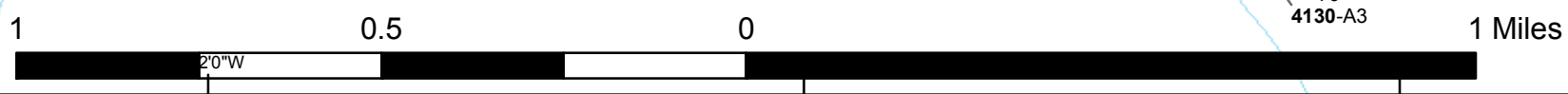
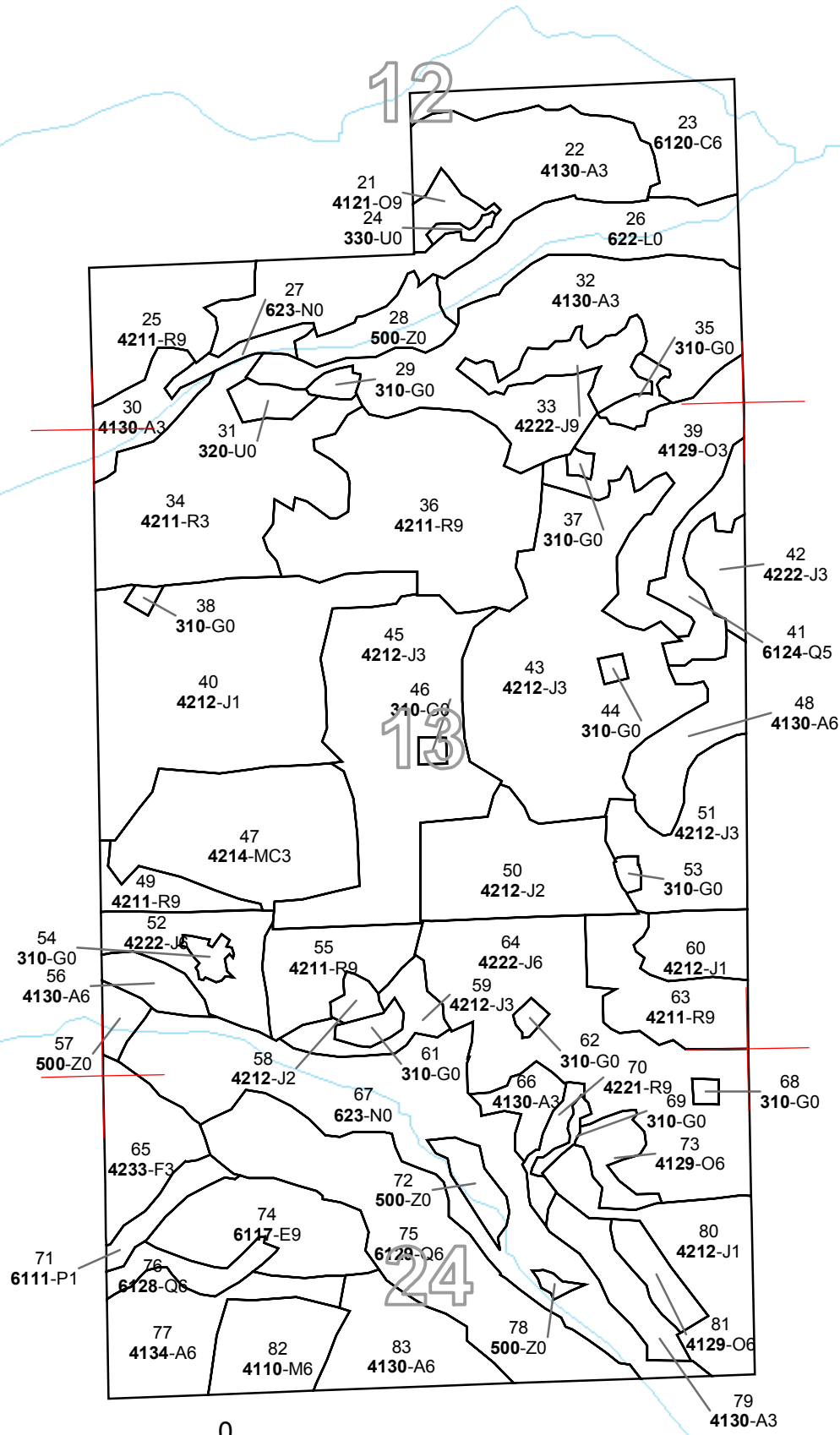


Legend

- Miris Corners
- Stand Boundaries
- Special Conservation Area
- Boat Access Sites
- Cold Water Streams
- Potential Old Growth Stands
- OI Special Conservation Areas
- Forest Stands
 - 411 - Northern Hardwood
 - 412 - Oak Types
 - 413 - Aspen Types
 - 419 - Mixed Upland Deciduous
 - 421 - Planted Pines
 - 422 - Natural Pines
 - 423 - Other Upland Conifers
 - 611 - Lowland Deciduous Forest
 - 612 - Lowland Coniferous Forest
- Non-Forest Stands
 - 122 - Road/Parking Lot
 - 310 - Herbaceous Openland
 - 320 - Upland Shrub
 - 330 - Low-Density Trees
 - 500 - Water
 - 622 - Lowland Shrub
 - 623 - Emergent Wetland



Stand #
 23
Stocking Density
 (412)0 - A7
 Level 3 OI
 Level 4 Code
Cover Type Code





S
t
a
n
d

Treatment Name	Acres	Stage1 CoverType	Size Density	Stand Age	Treatment Type	Treatment Method	Cover Type Objective
14 54048014-CCR	11.6	42210 - Natural Red Pine	High Density Log	53	Harvest	Clearcut with Reserves	Planted Red Pine, Mixed Deciduous

Rev Acceptable regeneration is any combination of aspen, oak, jack pine, red pine or white pine resulting in a medium or well stocked stand.
Cmnt:

Rev Retain 3 to 10 percent of stand area in one or more patches.
Spec: Location(s) will be determined during sale prep and will be representative of the stand's species mix as a whole.
Do not cut white pine, oak, hemlock or white-cedar, if present.

Next plant red pine.
Steps:

33 54048033-CCR	10.8	42220 - Natural Jack Pine	High Density Log	78	Harvest	Clearcut with Reserves	Pine, Aspen Mix
-----------------	------	---------------------------	------------------	----	---------	------------------------	-----------------

Rev Retain 3 to 10 percent of stand area in one or more patches.
Cmnt:
Rev Location(s) will be determined during sale prep and will be representative of the stand's species mix as a whole.
Spec: Do not cut red pine, white pine, oak, hemlock or white-cedar, if present.
Acceptable regeneration is any combination of aspen, oak, jack pine, red pine, or white pine resulting in a medium or well stocked stand.

Next regen survey. Plant jack pine if natural regen fails.
Steps:

36 54048036-CCR	57.3	42110 - Planted Red Pine	High Density Log	78	Harvest	Clearcut with Reserves	Planted Red Pine, Mixed Deciduous
-----------------	------	--------------------------	------------------	----	---------	------------------------	-----------------------------------

Rev Acceptable regeneration is any combination of aspen, oak, jack pine, red pine, or white pine resulting in a medium or well stocked stand.
Cmnt: Use shortwood specs to protect white pine and oak regeneration.

Rev Retain 3 to 10 percent of stand area in one or more patches.
Spec: Location(s) will be determined during sale prep and will be representative of the stand's species mix as a whole.
Do not cut white pine, oak, hemlock or white-cedar, if present.

Next Regen survey. Where regeneration is inadequate, plant jack pine on dry sites, red pine on mesic sites.
Steps:

49 54048049-SysThin	7.5	42110 - Planted Red Pine	High Density Log	53	Harvest	Systematic Thinning	Planted Red Pine
---------------------	-----	--------------------------	------------------	----	---------	---------------------	------------------

Rev Reduce red pine BA to 110. Do not cut, white pine, oak, hemlock white-cedar, cherry or service berry, if present. Remove remaining species to 2" DBH.
Cmnt:
Spec:

Next Regen survey. Where regeneration is inadequate, plant jack pine on dry sites, red pine on mesic sites.
Steps:

55 54048055-CCR	17.1	42110 - Planted Red Pine	High Density Log	78	Harvest	Clearcut with Reserves	Planted Jack Pine, Mixed Deciduous
-----------------	------	--------------------------	------------------	----	---------	------------------------	------------------------------------

Rev Retain 3 to 10 percent of stand area in one or more patches.
Cmnt:
Rev Location(s) will be determined during sale prep and will be representative of the stand's species mix as a whole.
Spec: Do not cut white pine, oak, hemlock or white-cedar, if present.
Acceptable regeneration is any combination of aspen, oak, jack pine, red pine, or white pine resulting in a medium or well stocked stand.

Next Plant jack pine.
Steps:



S
t
a
n
d

Treatment Name	Acres	Stage1 CoverType	Size Density	Stand Age	Treatment Type	Treatment Method	Cover Type Objective
63 54048063-CCR	19.7	42110 - Planted Red Pine	High Density Log	78	Harvest	Clearcut with Reserves	Planted Jack Pine

Rev
Cmnt:

Rev Retain 3 to 10 percent of stand area in one or more patches.
Spec: Location(s) will be determined during sale prep and will be representative of the stand's species mix as a whole.
Do not cut white pine, oak, hemlock or white-cedar, if present.
Acceptable regeneration is any combination of aspen, oak, jack pine, red pine, or white pine resulting in a medium or well stocked stand.

Next
Steps: Plant jack pine.

73 54048073-CCR	6.4	4129 - Mixed Oak	High Density Pole	69	Harvest	Clearcut with Reserves	Oak, Pine
-----------------	-----	------------------	-------------------	----	---------	------------------------	-----------

Rev
Cmnt:

Rev Retain 3 to 10 percent of stand area in one or more patches.
Spec: Location(s) will be determined during sale prep and will be representative of the stand's species mix as a whole.
Do not cut red pine or white pine.
Acceptable regeneration is any combination of aspen, oak, jack pine, red pine, or white pine resulting in a medium or well stocked stand.

Next
Steps: regen survey.

81 54048081-CCR	6.5	4129 - Mixed Oak	High Density Pole	69	Harvest	Clearcut with Reserves	Oak, Pine
-----------------	-----	------------------	-------------------	----	---------	------------------------	-----------

Rev
Cmnt:

Rev Retain 3 to 10 percent of stand area in one or more patches.
Spec: Location(s) will be determined during sale prep and will be representative of the stand's species mix as a whole.
Do not cut red pine or white pine.
Acceptable regeneration is any combination of aspen, oak, jack pine, red pine, or white pine resulting in a medium or well stocked stand.

Next
Steps: regen survey.

**Total Treatment
Acreage Proposed: 137.0**

**PROPOSED TREATMENTS
WITH LIMITING FACTORS**



S
t
a
n
d

Treatment Name	Acres	Stage1 Cover Type	Size Density	Stand Age	Treatment Type	Treatment Method	Cover Type Objective	Page 1 of 1
----------------	-------	-------------------	--------------	-----------	----------------	------------------	----------------------	-------------

Limiting Factor
and Comment:

Rev
Cmnt:

Rev
Spec:

Next
Steps:

No Treatment
Reason

**Total Treatment
Acreage Proposed: 0**



PROPOSED SPECIAL CONSERVATION AREA* (SCA) DETAILS

* This is a partial list of SCAs for this compartment. Not included are those areas identified under other Department initiatives (Natural Rivers, Deer Wintering Areas, etc.). Those will be identified in separate, future map and report products.

Inventory Method: IFMAP

Stand	SCA Name	Acres	Comments
<hr/>			
<hr/>			



DEDICATED CONSERVATION AREA DETAILS

* This is a list of Dedicated Biodiversity Areas for this compartment along with a 1/4 mile buffer surrounding the compartment. Refer to Dedicated Conservation Area Map for areas that the below listed Conservation Areas are located.

ERA = Ecological Reference Area
 HCVA = High Conservation Value Area
 SCA = Special Conservation Area

Conservation Area	Type	Description
SCA	Cold Water Stream	A coldwater stream has temperature and dissolved oxygen conditions that allow naturally-reproduced or stocked trout populations and those of other coldwater fish species (e.g., slimy sculpin) to persist from year to year. Coldwater streams in Michigan typically provide these conditions due to substantial contributions of groundwater to their stream flows. Such streams are established by Director's action and designated as trout resources by Fisheries Order 210.
SCA	Potential Old Growth Areas	This category contains stands were identified for a broad range of reasons and were coded in the OI database as stand condition 8 as potential old growth (POG). Approximately 310,000 acres have been identified through the Operations Inventory (OI)/Compartment Review process. For stands in Year of Entry 2008 and forward, potential old growth is managed for the identified objective until it is: 1) vetted through the Biodiversity Conservation Planning Process (BCPP) and given a specific designation and objective (as an ERA, HCVA, or other type of SCA) and is released from the potential old growth designation; or 2) it is released from the potential old growth designation via the Compartment Review process.