



ATLANTA FOREST MANAGEMENT UNIT
COMPARTMENT REVIEW PRESENTATION
COMPARTMENT 003 ENTRY YEAR: 2010
Compartment Acreage: 855 County: Montmorency

Revision Date: October 16, 2008

Stand Examiner: Barber

Legal Description: T29N, R01E, Sec. 19, 25, 31, 32, 35 and 36

RMU (if applicable):

Management Goals: Mineral Development, Timber Harvest, Motorized Recreation.

Soil and Topography: Mostly sandy and level, predominantly PArVHa and PVCd. Some areas feature either frost pockets or vernal ponds. The southwest corner has complex wetland mixes.

Ownership Patterns, Development, and Land Use in and Around the Compartment: This is a highly fragmented compartment. Surrounding lands consist largely of Lewiston lakes cottage sprawl.

Unique, Natural Features (include only non-site specific and non-sensitive information): Reported by MNFI.

Archeological, Historical, and Cultural Features (include only non-site specific and non-sensitive information): One or more sites have been reported.

Special Management Designations or Considerations: None.

Watershed and Fisheries Considerations: The Middle Branch of Big Creek is a Natural River. There is a water access site on Spectacle Lakes.

Wildlife Habitat Considerations:

Mineral Resource and Development Concerns and/or Restrictions:

Vehicle Access: Roads to be closed are shown on the compartment map as closed or abandoned.

Survey Needs: None.

Recreational Facilities and Opportunities: Little Wolf Lake Campground, a water access site on Spectacle Lakes, plus a snowmobile trail.

Fire Protection: MDNR and Lewiston VFD.

Additional Compartment Information:

- **The following 5 reports from the Operations Inventory System (OIPC) are attached:**
 - ◆ **Cover Type by Age Class**
 - ◆ **Cover Type by Management Objective**
 - ◆ **Compartment Volume Summary**
 - ◆ **Proposed Treatments – No Limiting Factors**
 - ◆ **Proposed Treatments – With Limiting Factors**

- **The following information is displayed, where pertinent, on the attached compartment maps:**
 - ◆ **Base feature information, stand numbers, cover types**
 - ◆ **Proposed treatments**
 - ◆ **Proposed road access system**
 - ◆ **Suggested potential old growth**

9/2/2008 10:06:47 AM

Michigan Department of Natural Resources - Operations Inventory System
Individual Compartment Report

MACKINAW STATE FOREST

ATLANTA FOREST MGT UNIT

MONTMORENCY COUNTY

COMPARTMENT: 3

Table 3A

(acres shown in boxes)

MANAGEMENT OBJECTIVE TYPE

COVER TYPE	A	S	V	C	G	H	J	I	L	P	N	Q	X	O	B	R	K	Y	F	E	T	D	U	M	Z	W	Total	
A Aspen	74																										74	
V Bog or Marsh			1																									1
G Grass					8																							8
J Jack Pine							166																					166
L Lowlnd Brush									14																			14
N Marsh											32																	32
X Non Stocked													11															11
O Oak														453														453
R Red Pine																26												26
Y Sand Dune																		1										1
T Tamarack																					10							10
D Treed Bog																							13					13
U Upland Brush																									7			7
Z Water																									2			2
W White Pine																										37	37	
Total	74		1		8		166		14		32		11	453		26					10	13	7		2	37	855	

MACKINAW STATE FOREST

ATLANTA FOREST MGT UNIT

MONTMORENCY COUNTY

COMPARTMENT: 3

Table 10 - COMPARTMENT VOLUME SUMMARY - ALL STANDS

COMPARTMENT SUMMARY			
TOTAL VOLUME		CUT VOLUME	
Hardwood	2374 Cds	Hardwood	1378 Cds
Hardwood	102 Mbf	Hardwood	67 Mbf
Softwood	809 Cds	Softwood	451 Cds
Softwood	552 Mbf	Softwood	129 Mbf
Sum TotVol	4491 Cds	Sum CutVol	2221 Cds
Total Cmpnt Acres		Acres Proposed For Cut.....	243
855			

ATLANTA FOREST MGT UNIT

**Proposed Treatments
With NO Limiting Factors**

Compartment: 3

Entry Year: 2010

Stand	Cover Type	Acres	Age	Site Index	Mgt Obj	Condition	Method Cut	Harvest Priority	Cultural Need	fdf Status
6	O5	3	98	50	oak	mature	final harvest	1		
comnts Fmd : Oak regeneration runs 8 to 10 feet tall. Protect regeneration by not skidding/chipping tops. Acceptable regeneration is any combination of aspen, oak, jack pine, red pine, or white pine resulting in a medium or well stocked stand. Retain 3 to 10 percent of stand area. Location will be either the north or south end of stand, which ever is more representative of species mix. Do not cut red pine, white pine or white-cedar, if present.										
9	J5	64	89	52	jack pine	mature	final harvest	1		
comnts Fmd : Acceptable regeneration is any combination of aspen, oak, jack pine, red pine, or white pine resulting in a medium or well stocked stand. Retain 3 to 10 percent of stand area. Location(s) will be determined during sale prep and will be representative of the stand's species mix as a whole. Do not cut red pine, white pine or white-cedar, if present.										
17	O6	27	86	49	oak	mature	final harvest	1		
comnts Fmd : WHITE PINE STUMP FIELD. OAK IS POOR QUALITY, BUT HIGHER DENSITY THAN OTHER STANDS. MANAGE FOR MIXED OAK/ WHITE PINE. HEAVY WP REPRO IN SOME PLACES. PROTECT WHITE PINE REGENERATION. 6 acres in 4 patches cut 2001. Stay off of slope along west edge. Protect WP and oak regeneration by shortwooding, which otherwise would set stand back 10-15 years. Retain 3 to 10 percent of stand area in one or more patches. Location(s) will be determined during sale prep and will be representative of the stand's species mix as a whole. Do not cut red pine, white pine, hemlock or white-cedar, if present. Acceptable regeneration is any combination of aspen, oak, jack pine, red pine, or white pine resulting in a medium or well stocked stand. Watch for potential for archeological features during intrusive activities.										
22	O5	18	88	51	oak	mature	final harvest	1		
comnts Fmd : A WHITE PINE STUMP FIELD. VERY HILLY AND SENIC. PROTECT WHITE PINE REGENERATION LEAVE WHITE PINE AND RED PINE. MANAGE FOR MIXED OAK AND PINE. 3 spots totaling 5 acres cut 2001. Retain 3 to 10 percent of stand area in one or more patches. Location(s) will be determined during sale prep and will be representative of the stand's species mix as a whole. Do not cut red pine, white pine, hemlock or white-cedar, if present. Acceptable regeneration is any combination of aspen, oak, jack pine, red pine, or white pine resulting in a medium or well stocked stand. Watch for potential for archeological features during intrusive activities.										
37	O8	40	84	49	oak	mature	final harvest	1		
comnts Fmd : A WHITE PINE STUMP FIELD. STAND IS HEAVILY INFESTED WITH TWO-TRACKS AND ILLEGAL ORV TRAILS. SOME OF THE NEWER ILLEGAL TRAILS TERMINATE NEAR NEWLY CONSTRUCTED HOMES. 5 patches totaling 8 acres cut 2001. Oak regen from stump sprouts has survived. Protect white pine regen with shortwood specs. Leave all red pine and white pine. Retain 3 to 10 percent of stand area in one or more patches. Location(s) will be determined during sale prep and will be representative of the stand's species mix as a whole. Do not cut red pine, white pine, hemlock or white-cedar, if present. Acceptable regeneration is any combination of aspen, oak, jack pine, red pine, or white pine resulting in a medium or well stocked stand.										
43	O5	80	84	49	oak	mature	final harvest	1		
comnts Fmd : Ten 5-spot patches totaling 17 acres were cut 2001. Protect white pine regeneration. Leave red pine and white pine. Leave 1 ch buffer on bogs. SCA. Natural River zoning district on Big Creek, a tributary of the Au Sable. Watch for potential for archeological features during intrusive activities.										
143	O5	11	84	49	oak	mature	final harvest	1		
comnts Fmd : Ten 5-spot patches totaling 17 acres were cut 2001. Protect white pine regeneration. Leave red pine and white pine. Leave 1 ch buffer on bogs. Watch for potential for archeological features during intrusive activities.										
Total Acres.....		243								

**Proposed Treatments
With Limiting Factors**

Compartment: 003

Entry Year: 2010

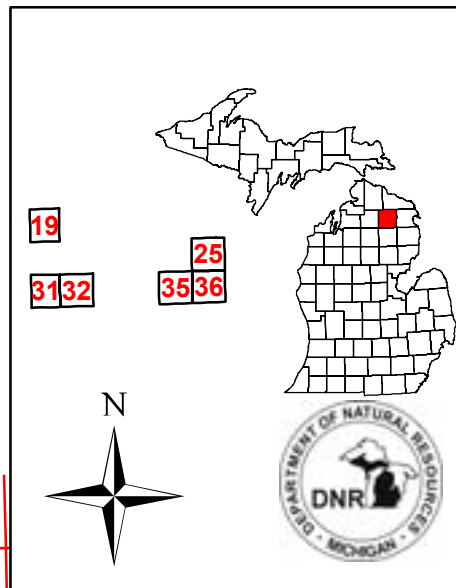
Stand	Cover Type	Acres	Age	Site Index	Mgt Obj	Condition	Method Cut	Harvest Priority	Cultural Need	FD Status
--------------	-----------------------	--------------	------------	-----------------------	--------------------	------------------	-----------------------	-----------------------------	--------------------------	----------------------

TREATMENT LIMITING FACTORS:

Total Acres..... 0

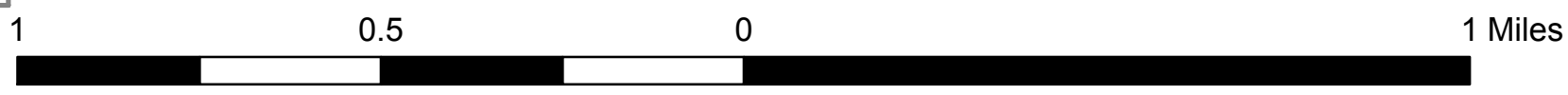
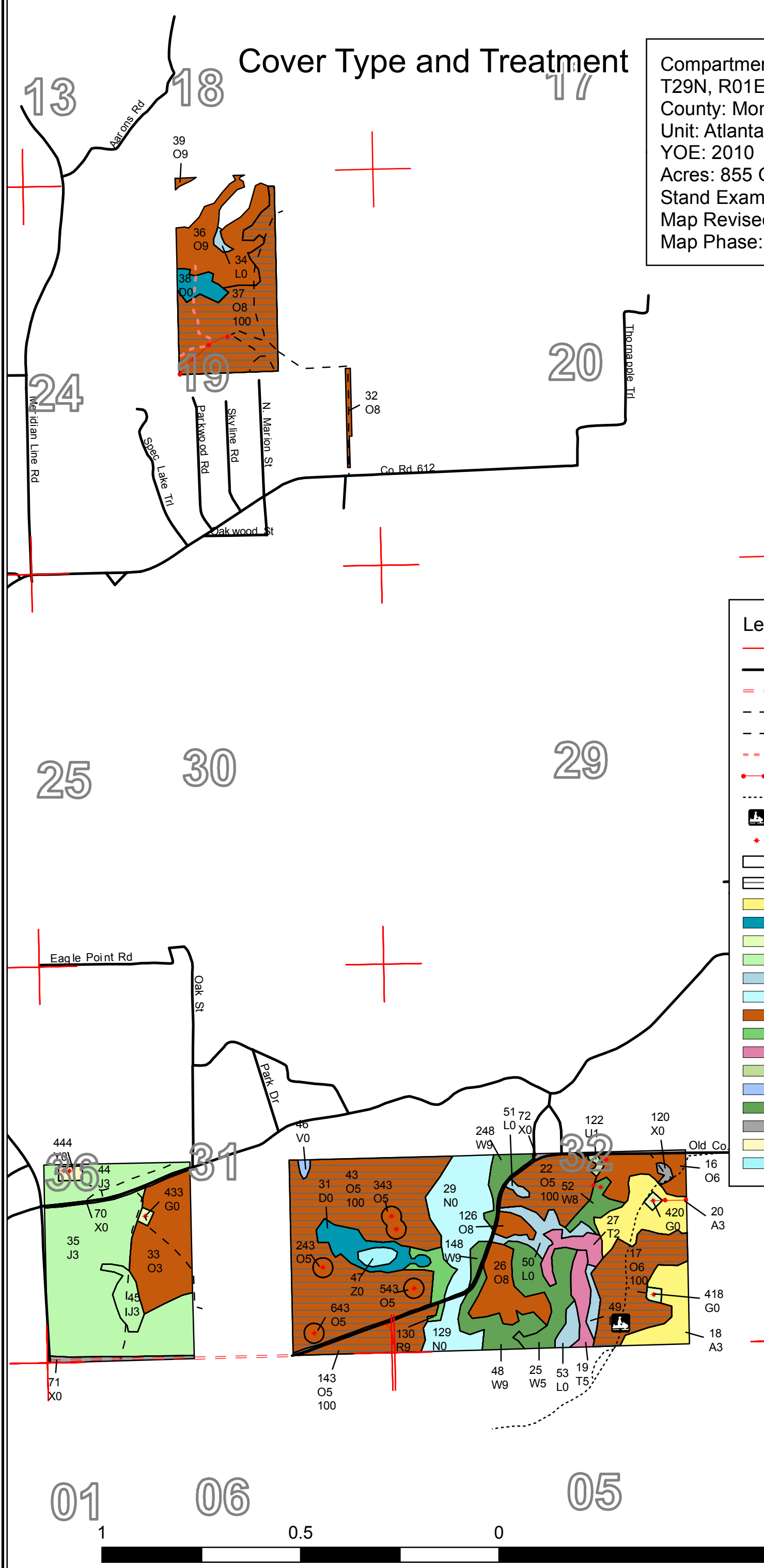
Cover Type and Treatment

Compartment 3
 T29N, R01E, Sec. 19, 25, 31, 32, 35, 36
 County: Montmorency
 Unit: Atlanta
 YOE: 2010
 Acres: 855 GIS Calculated
 Stand Examiner: Richard Barber
 Map Revised: 7/10/2008
 Map Phase: Pre-review



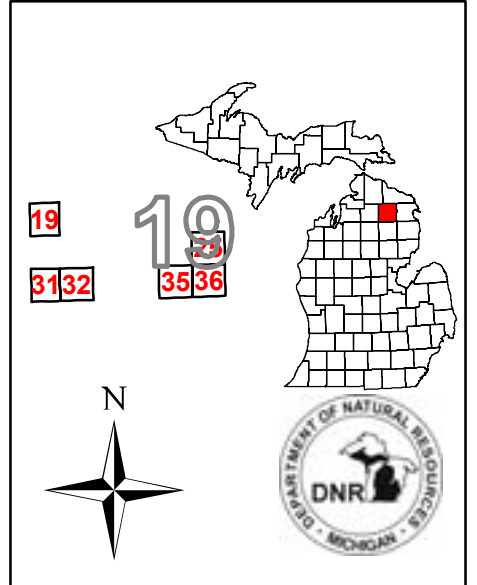
Legend

- Miris Corners
- Paved Roads
- County Gravel Roads
- Poor Dirt Roads
- Poor Dirt Roads with Pipelines
- Closed Roads
- Pipelines
- Trails
- Snowmobile Trails
- * Gas Wells
- Stand Boundary
- Final Harvest
- A - Aspen
- D - Treed Bog
- G - Grass
- J - Jack Pine
- L - Lowland Brush
- N - Marsh
- O - Oak
- R - Red Pine
- T - Tamarack
- U - Upland Brush
- V - Bog or Muskeg
- W - White Pine
- X - Non-Stocked
- Y - Sand Dunes
- Z - Water



Cover Type and Treatment

Compartment 3
 T29N, R01E, Sec. 19, 25, 31, 32, 35, 36
 County: Montmorency
 Unit: Atlanta
 YOE: 2010
 Acres: 855 GIS Calculated
 Stand Examiner: Richard Barber
 Map Revised: 7/10/2008
 Map Phase: Pre-review



Legend

- Miris Corners
- Paved Roads
- County Gravel Roads
- Poor Dirt Roads
- Poor Dirt Roads with Pipelines
- Closed Roads
- Pipelines
- Trails
- Snowmobile Trails
- * Gas Wells
- Stand Boundary
- Final Harvest
- A - Aspen
- D - Treed Bog
- G - Grass
- J - Jack Pine
- L - Lowland Brush
- N - Marsh
- O - Oak
- R - Red Pine
- T - Tamarack
- U - Upland Brush
- V - Bog or Muskeg
- W - White Pine
- X - Non-Stocked
- Y - Sand Dunes
- Z - Water



84°17'0"W 84°16'0"W 84°15'0"W

44°51'0"N

02

01

06

1

0.5

0

1 Miles

14

13

23

24

26

25

35

36

02

01

06

1

0.5

0

1 Miles

84°17'0"W

84°16'0"W

84°15'0"W

44°54'0"N

44°54'0"N

44°53'0"N

44°53'0"N

44°52'0"N

44°52'0"N

44°51'0"N

44°51'0"N

Frisbee Dr

Ede Weiss Rd

Co Rd 612

Killdeer Ln

Tow nline Rd

Fox Ln

Big Wolf Lake Woods Dr

Big Wolf Lake Rd

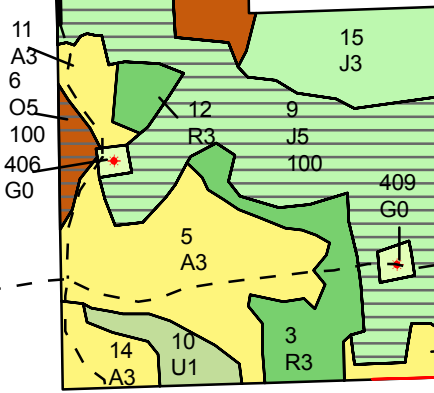
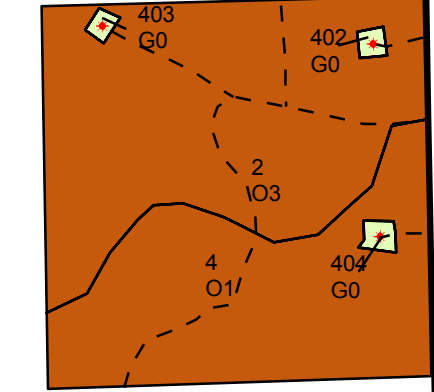
Boetcher Rd

Patterson Dr

Den Dorle Trl

Stickford Rd

State Park Rd



403 G0

402 G0

2 IO3

4 O1

404 G0

8 O2

15 J3

11 A3

6

O5

100

406 G0

12 R3

9 J5

100

5 A3

409 G0

14 A3

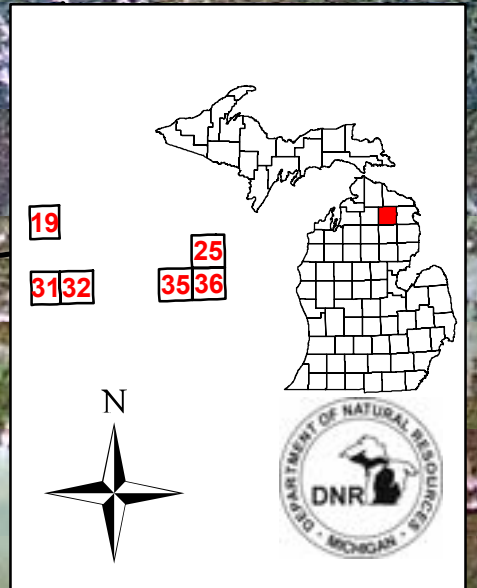
10 U1

3 R3

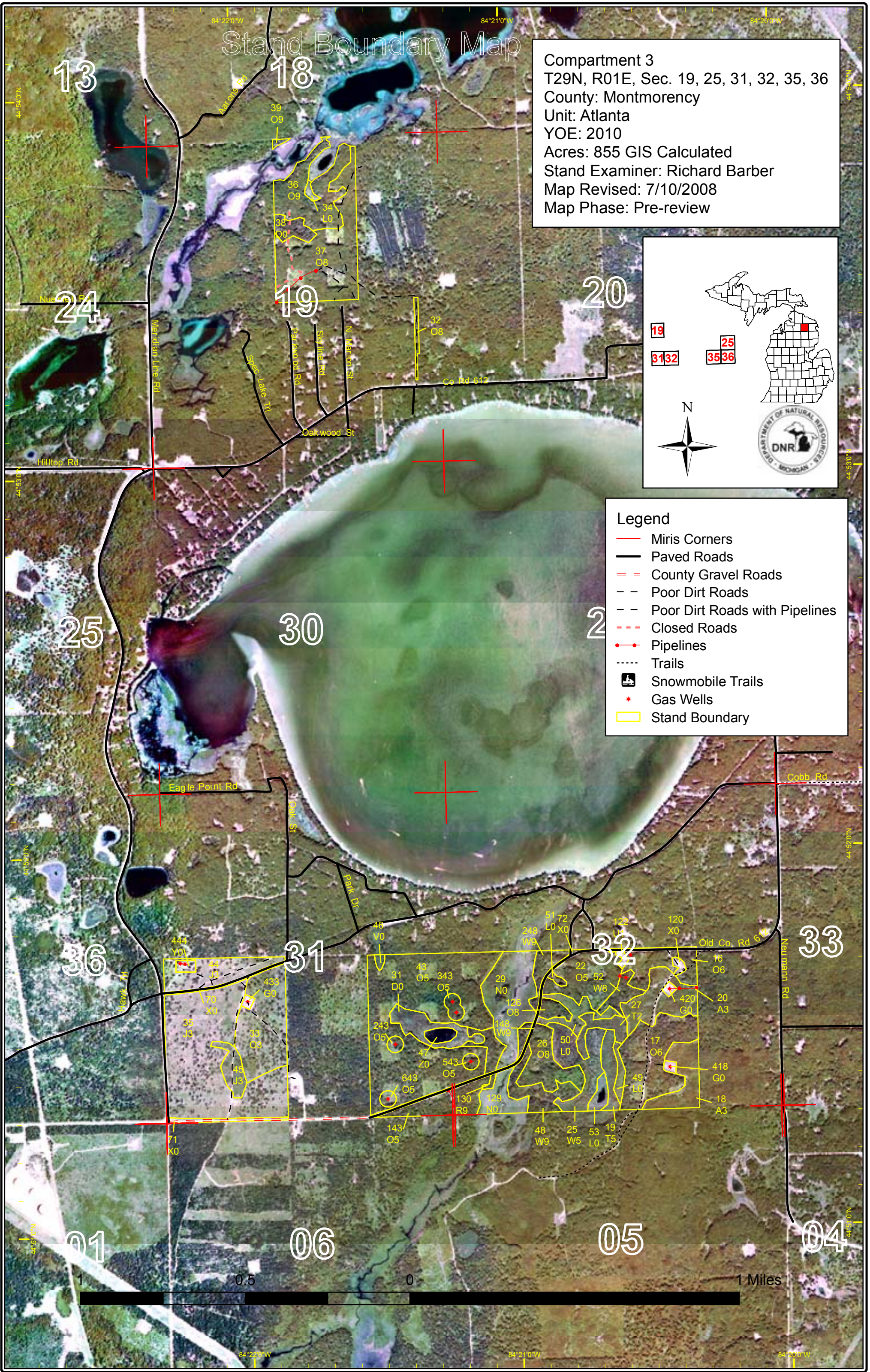
7 A3

Stand Boundary Map

Compartment 3
 T29N, R01E, Sec. 19, 25, 31, 32, 35, 36
 County: Montmorency
 Unit: Atlanta
 YOE: 2010
 Acres: 855 GIS Calculated
 Stand Examiner: Richard Barber
 Map Revised: 7/10/2008
 Map Phase: Pre-review

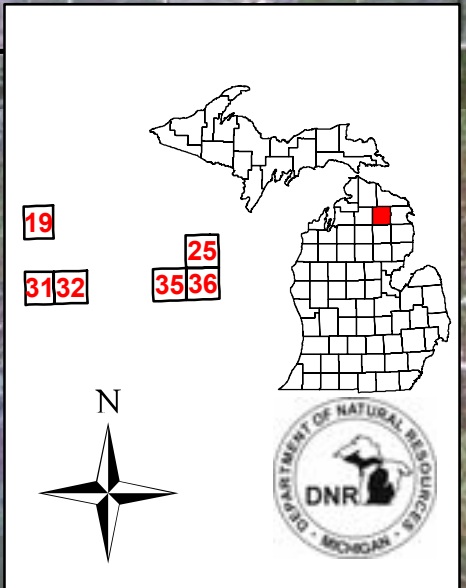


- Legend**
- Miris Corners
 - Paved Roads
 - County Gravel Roads
 - Poor Dirt Roads
 - Poor Dirt Roads with Pipelines
 - Closed Roads
 - Pipelines
 - Trails
 - Snowmobile Trails
 - * Gas Wells
 - Stand Boundary

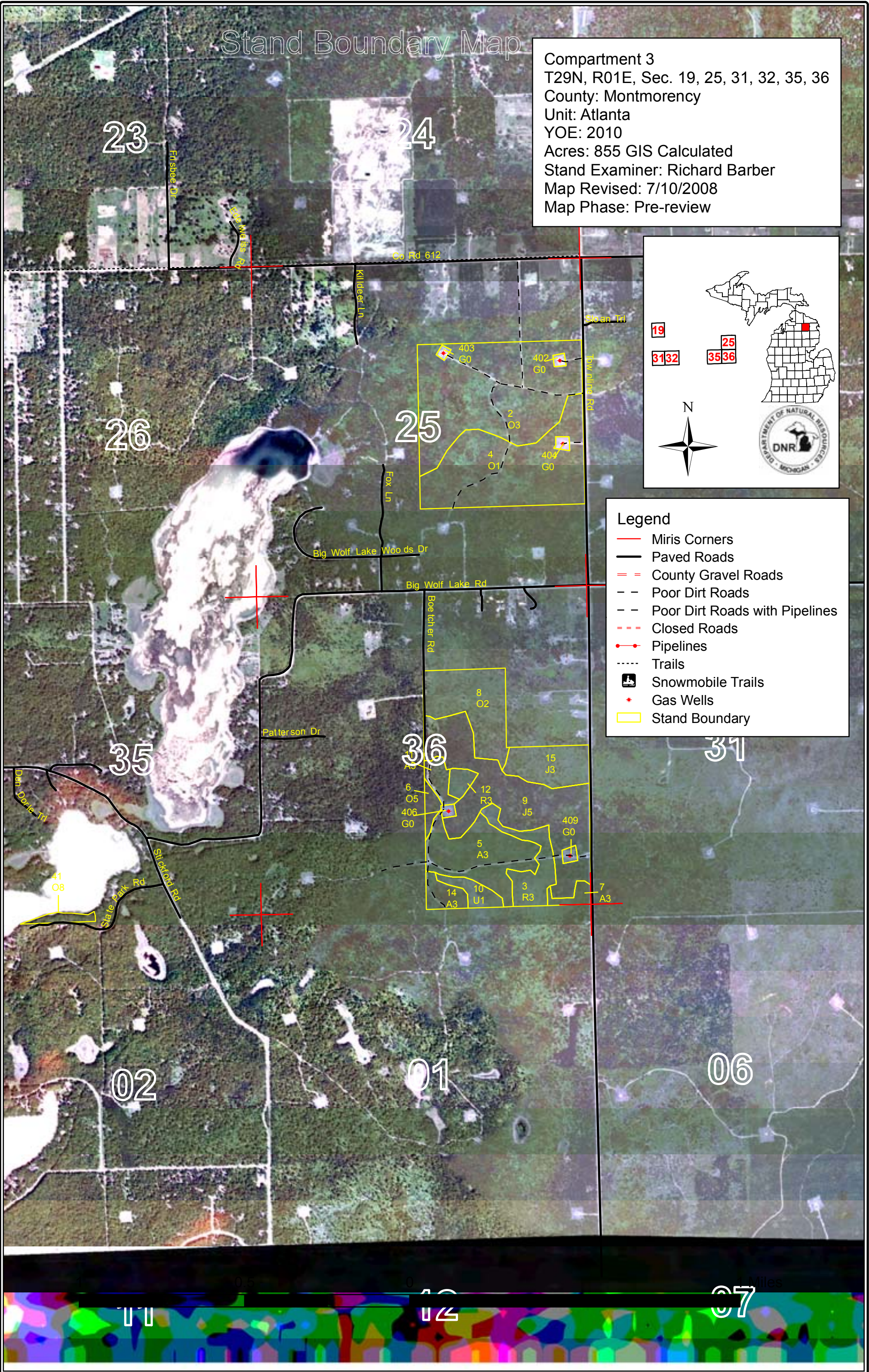


Stand Boundary Map

Compartment 3
 T29N, R01E, Sec. 19, 25, 31, 32, 35, 36
 County: Montmorency
 Unit: Atlanta
 YOE: 2010
 Acres: 855 GIS Calculated
 Stand Examiner: Richard Barber
 Map Revised: 7/10/2008
 Map Phase: Pre-review

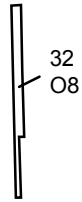
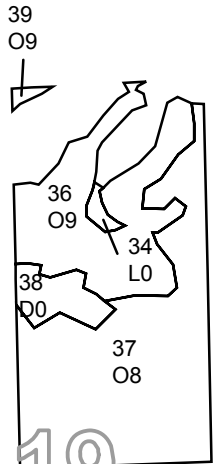
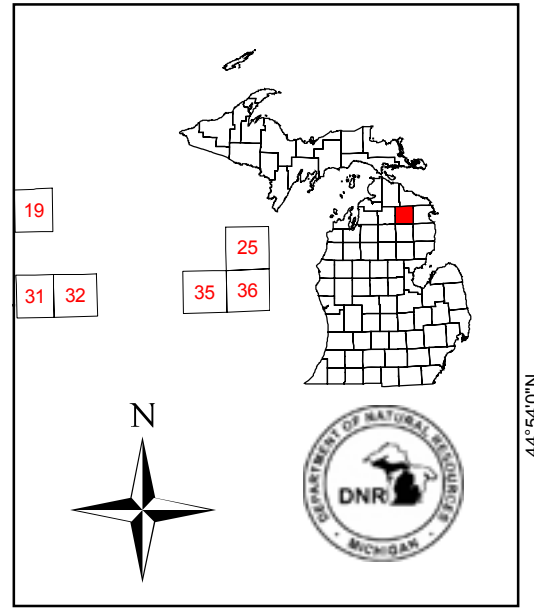


- Legend**
- Miris Corners
 - Paved Roads
 - = = County Gravel Roads
 - - Poor Dirt Roads
 - - Poor Dirt Roads with Pipelines
 - - - Closed Roads
 - Pipelines
 - - - Trails
 - Snowmobile Trails
 - * Gas Wells
 - Stand Boundary



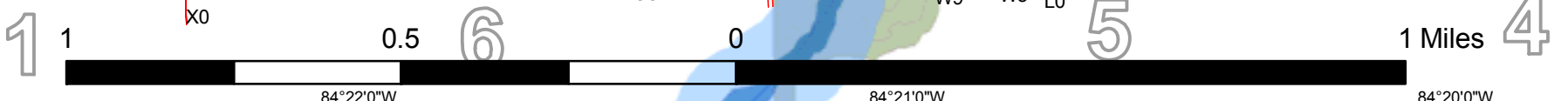
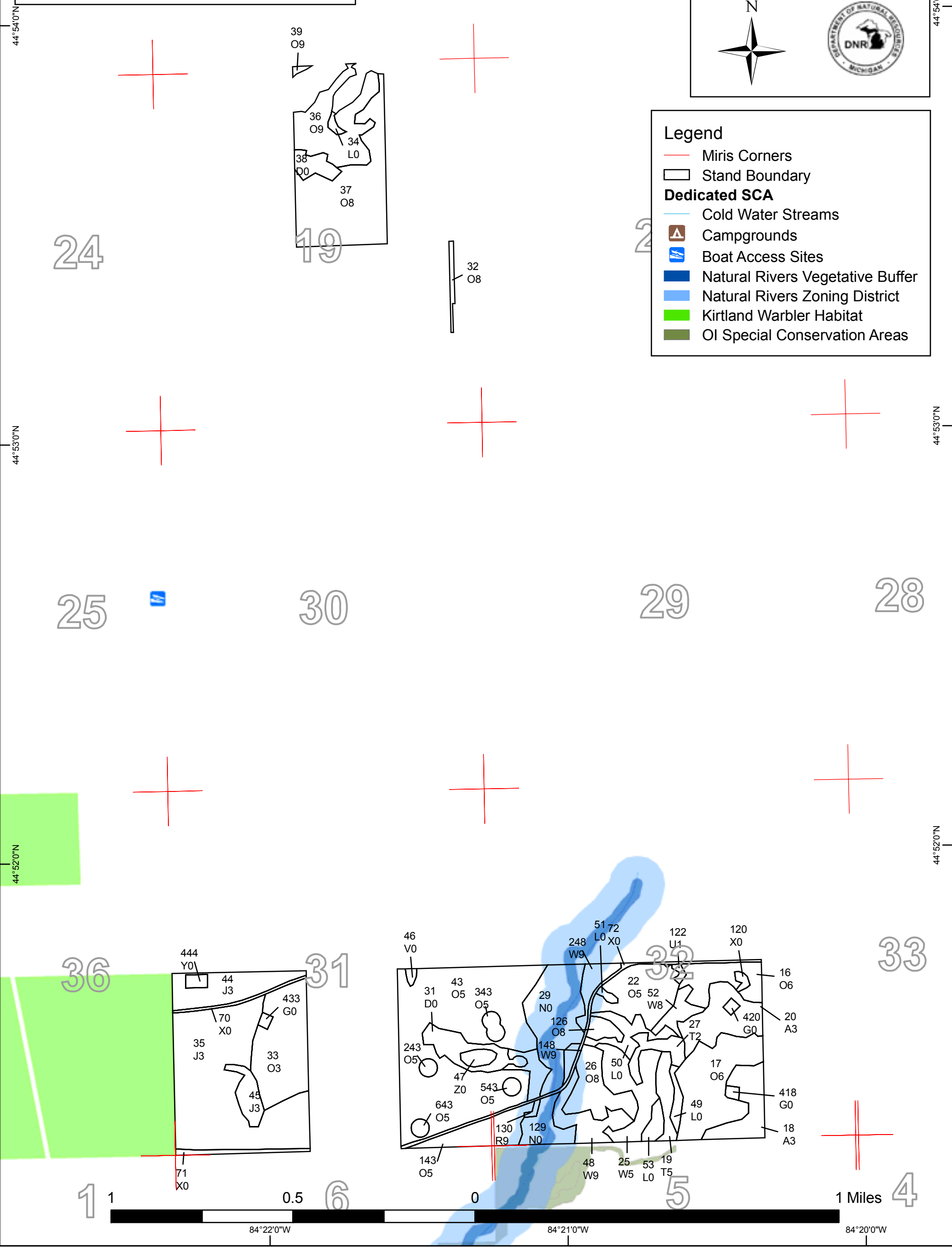
Dedicated & Proposed Special Conservation Area Map

Compartment 3
 T29N, R01E, Sec. 19, 25, 31, 32, 35, 36
 County: Montmorency
 Unit: Atlanta
 YOE: 2010
 Acres: 855 GIS Calculated
 Stand Examiner: Richard Barber
 Map Revised: 7/10/2008
 Map Phase: Pre-review



Legend

- Miris Corners
- Stand Boundary
- Dedicated SCA**
- Cold Water Streams
- Campgrounds
- Boat Access Sites
- Natural Rivers Vegetative Buffer
- Natural Rivers Zoning District
- Kirtland Warbler Habitat
- OI Special Conservation Areas



84°22'0"W 84°21'0"W 84°20'0"W

44°54'0"N

44°54'0"N

44°53'0"N

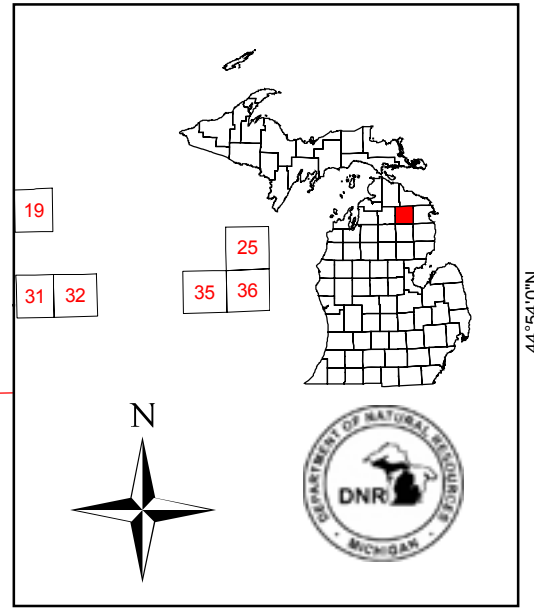
44°53'0"N

44°52'0"N

44°52'0"N

Dedicated & Proposed Special Conservation Area Map

Compartment 3
 T29N, R01E, Sec. 19, 25, 31, 32, 35, 36
 County: Montmorency
 Unit: Atlanta
 YOE: 2010
 Acres: 855 GIS Calculated
 Stand Examiner: Richard Barber
 Map Revised: 7/10/2008
 Map Phase: Pre-review



Legend

- Miris Corners
- Stand Boundary
- Dedicated SCA**
- Cold Water Streams
- Campgrounds
- Boat Access Sites
- Natural Rivers Vegetative Buffer
- Natural Rivers Zoning District
- Kirtland Warbler Habitat
- OI Special Conservation Areas

13

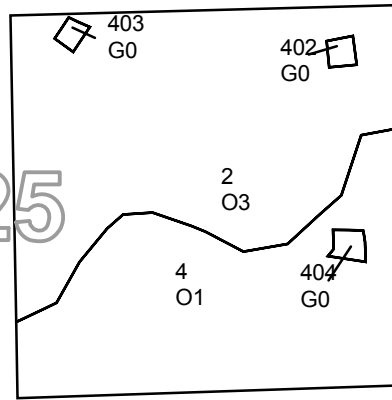
23

24

26

25

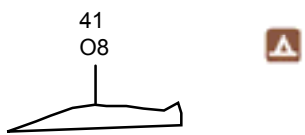
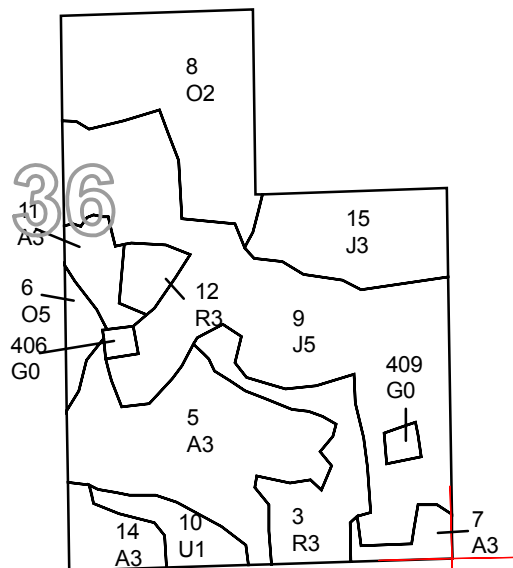
30



35

36

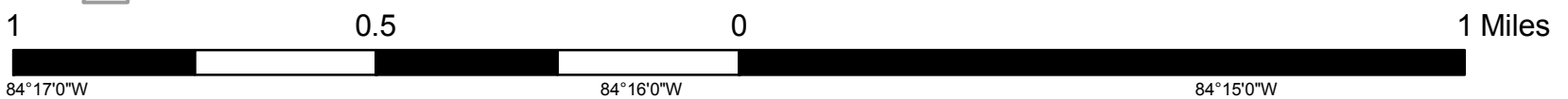
31



2

1

6



84°17'0"W

84°16'0"W

84°15'0"W

44°53'0"N

44°53'0"N

44°52'0"N

44°52'0"N

44°51'0"N



DEDICATED CONSERVATION AREA DETAILS

* This is a list of Dedicated Biodiversity Areas for this compartment along with a 1/4 mile buffer surrounding the compartment. Refer to Dedicated Conservation Area Map for areas that the below listed Conservation Areas are located.

ERA = Ecological Reference Area
HCVA = High Conservation Value Area
SCA = Special Conservation Area

Conservation Area	Type	Description
HCVA	Designated Critical Habitat	Critical habitat areas are established via a consultative and cooperative process between the DNR and the U.S. Fish and Wildlife service for the recovery of threatened and endangered species, as governed by Part 365, Endangered Species Protection, of the Natural Resources and Environmental Protection Act, 1994 PA 451, and the Federal Endangered Species Act of 1973. This is an active program, with proposed species plans in various stages of review. As of now only two exist, Kirtland Warbler Habitat and Piping Plover Habitat.
HCVA	Natural Rivers	There are two Natural Rivers datasets which are derived from spatial buffers set from an established and approved distance from the river centerlines. The Natural Rivers Zoning District is a 400 foot buffer for most Natural Rivers. The Vegetative Buffer ranges from 25 to 100 feet. To view specific Zoning Districts and Vegetative Buffers for each Natural River see the table located on the I:\Documentation\GDSE data folder.
SCA	Archaeological Site	An aquatic or terrestrial area of the State that contains physical remains of human occupation. These are sites of cultural and historical significance that may occur upon terrestrial areas and Great Lakes bottomlands. They include thousands of Native American settlements and burial sites, as well as French and British outposts, nineteenth century logging camps, mines and homesteads. Beneath the waters of the Great Lakes, there are shipwrecks and other remains documenting the maritime trade. Such sites may be identified by Natural heritage data from the State Historic Preservation Office. Proposed treatments in this compartment will be implemented in such a manner as to maintain the integrity of these sites. Due to the sensitive nature of this information, no further detail about location is available.
SCA	Cold Water Stream	A coldwater stream has temperature and dissolved oxygen conditions that allow naturally-reproduced or stocked trout populations and those of other coldwater fish species (e.g., slimy sculpin) to persist from year to year. Coldwater streams in Michigan typically provide these conditions due to substantial contributions of groundwater to their stream flows. Such streams are established by Director's action and designated as trout resources by Fisheries Order 210.
SCA	Concentrated Recreation Area	Facilities that are designed and maintained for routine or heavy recreational use, including State Parks, State Forest campgrounds, motorized and non-motorized trails, trailheads, staging areas and public access sites.
SCA	Potential Old Growth Areas	This category contains stands were identified for a broad range of reasons and were coded in the OI database as stand condition 8 as potential old growth (POG). Approximately 310,000 acres have been identified through the Operations Inventory (OI)/Compartment Review process. For stands in Year of Entry 2008 and forward, potential old growth is managed for the identified objective until it is: 1) vetted through the Biodiversity Conservation Planning Process (BCPP) and given a specific designation and objective (as an ERA, HCVA, or other type of SCA) and is released from the potential old growth designation; or 2) it is released from the potential old growth designation via the Compartment Review process.