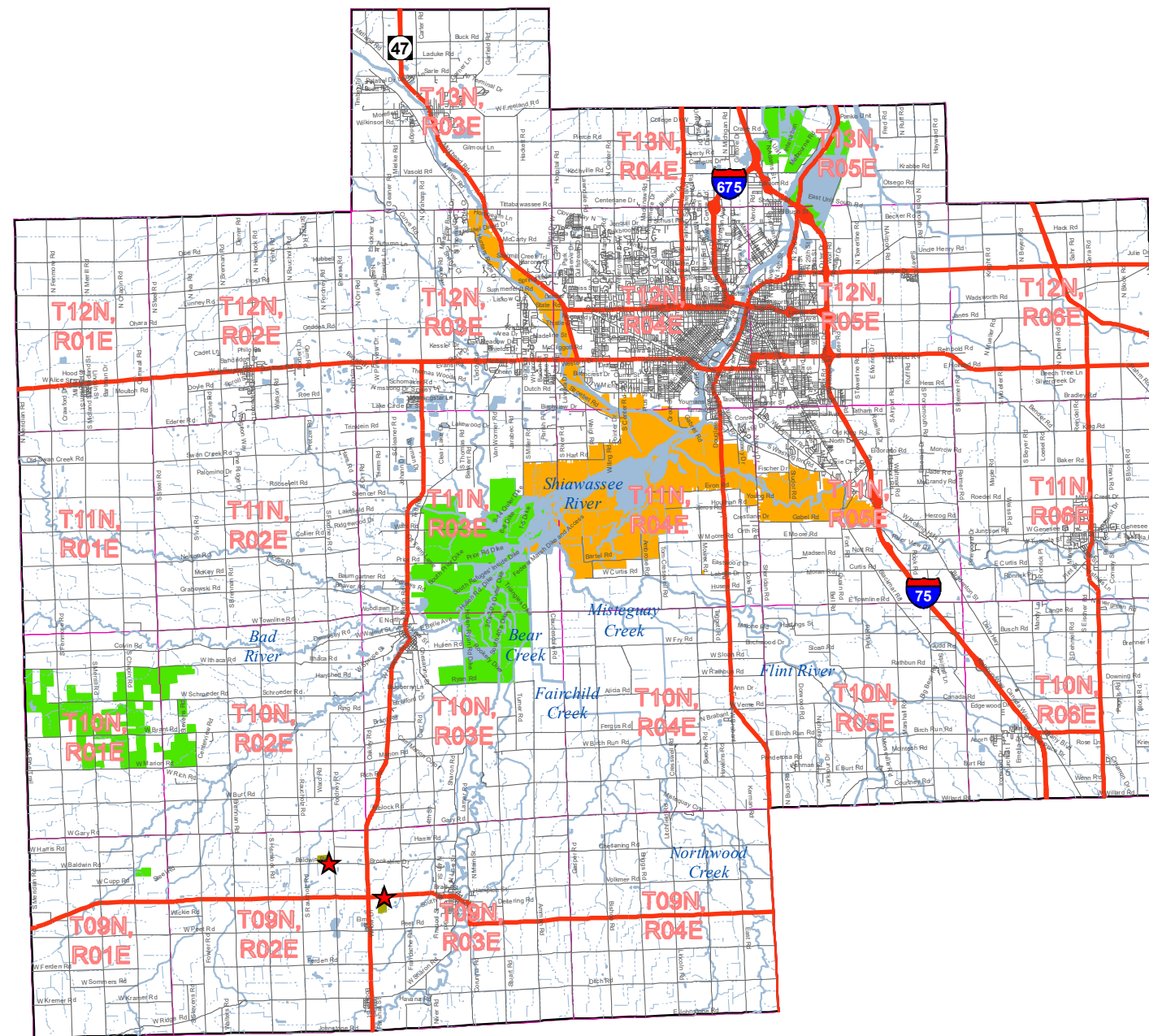
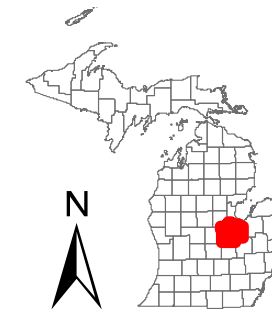




Lands Open to Public Hunting SAGINAW COUNTY



Map Revised: Date: 12/14/2020

Legend

- | | | |
|--|--------------------------------------|------------------------------|
| Highways | State Forest Land | National Forests |
| Roads | State Wildlife/Game Areas | National Park Service |
| Intermittent Stream/Drain | HAP (Hunter Access Program) Boundary | US Fish and Wildlife Service |
| Stream | State Park and Recreation Areas | HAP (Hunter Access Program)* |
| Lakes and Rivers | Commercial Forest Lands | |
| Townships | | |
| Other categories (Includes private lands, other - owner lands, lands closed to hunting, easements, etc.) | | |

* See 2020-2021 Hunter Access Program Guide
www.michigan.gov/dnr



User Note:

There may be refuges that are **CLOSED** to hunting on State land. It is the responsibility of the users of this map to be aware of all rules and regulations relevant to their hunting activities and hunting locations. This map shows approximate boundaries of lands open to public hunting. This map is designed to be used for hunting trip planning purposes only, and not for legal boundary determinations. There is the potential for small areas, which are closed to hunting, to be found within the shaded boundaries of areas which are shown as open to hunting.

This map is not to be used as a sole source for determining if an area is open to hunting. Not all lands depicted on this map are open for all hunting seasons or for all game species. Contact your local DNR office if you have questions or to verify regulations relating to your activities before engaging in those activities. The DNR is on the internet at www.michigan.gov/dnr.