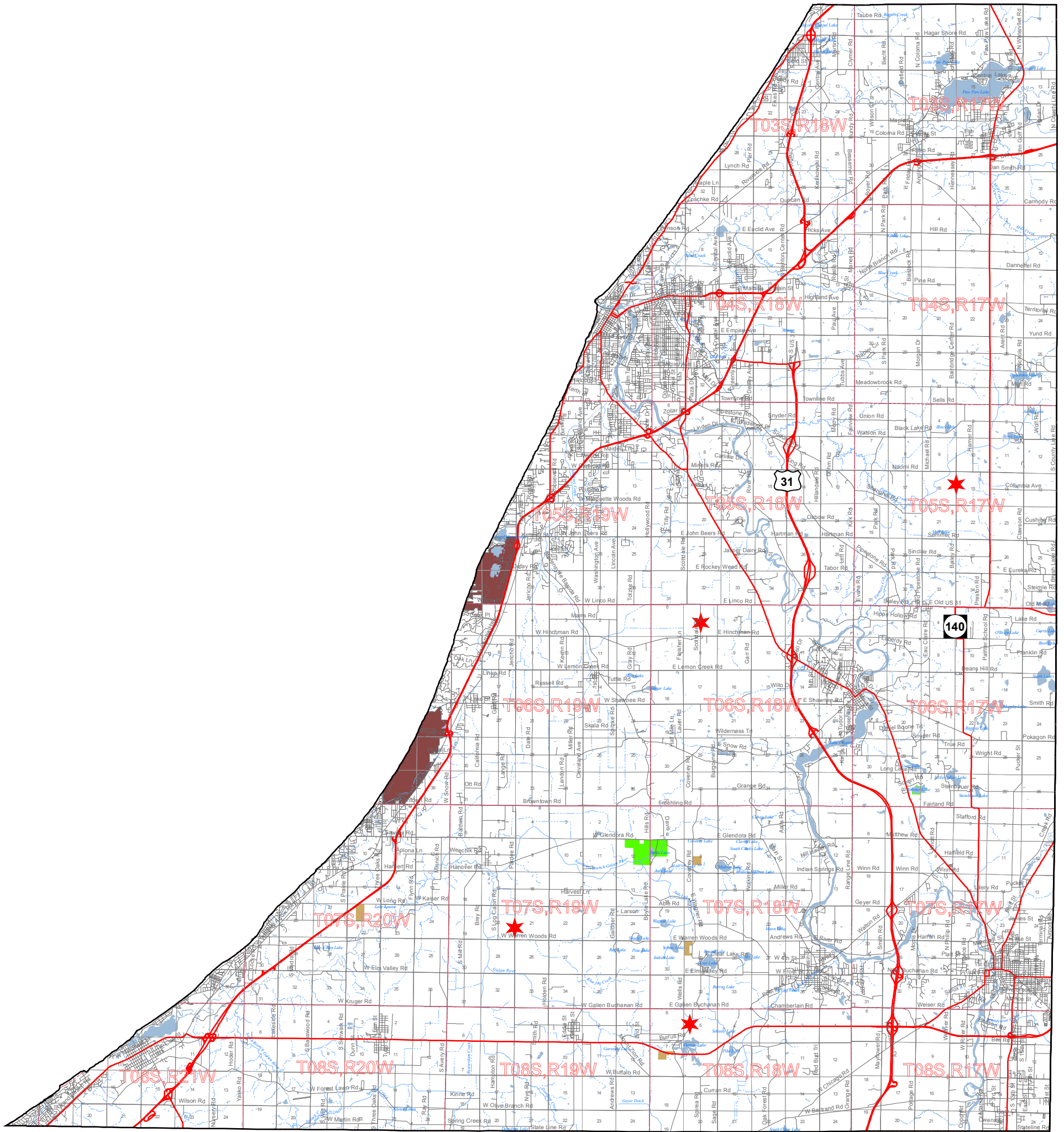
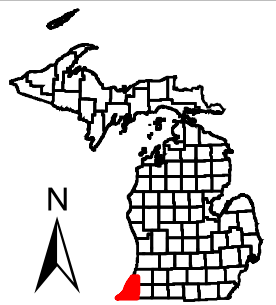




# Lands Open to Public Hunting Berrien County



Map Revised: Mar 20, 2012

## Legend

- Highway
- Roads
- Intermittent Stream/Drain
- Stream
- Lakes and Rivers
- Townships
- Other categories (Includes private lands, other - owner lands, lands closed to hunting, easements, etc.)

## Open to Public Hunting

- State Wildlife/Game Areas
- State Forest Land
- Commercial Forest Lands
- State Parks and Recreation Areas
- National Forest
- National Park Service
- US Fish and Wildlife Service
- National Lakeshore Boundary
- Hunter Access Program (HAP)\*

Miles 0 2 4

## User Note:

It is the responsibility of the users of this map to be aware of all rules and regulations relevant to their hunting activities and hunting locations. This map shows approximate boundaries of lands open to public hunting. This map is designed to be used for hunting trip planning purposes only, and not for legal boundary determinations. There is the potential for small areas, which are closed to hunting, to be found within the shaded boundaries of areas which are shown as open to hunting. This map is not to be used as a sole source for determining if an area is open to hunting. Not all lands depicted on this map are open for all hunting seasons or for all game species. Contact your local DNR office if you have questions or to verify regulations relating to your activities before engaging in those activities. The DNR is on the internet at "www.michigan.gov/dnr".

\* See 2011-2012 Hunter Access Program Guide  
www.michigan.gov/dnr